



Rechargeable Callus Remover Instruction Manual



Model no.: BCM-1603

SAFETY GUIDE

PLEASE READ CAREFULLY BEFORE USING THIS APPLIANCE

Please follow all the precautions listed below for safety and to reduce the risk of injury or electric shock.



WARNING: READ ALL INSTRUCTIONS; FAILURE TO FOLLOW ALL INSTRUCTIONS LISTED BELOW MAY RESULT IN ELECTRIC SHOCK, FIRE OR SERIOUS PERSONAL INJURY.

SAVE THESE INSTRUCTIONS FOR FUTURE REFERENCE

1. For hygienic reasons, do not share this appliance with other people.
2. This appliance contains batteries that are non-replaceable.
3. When switched ON, the appliance must never come in contact with the hair on your head, eyelashes, ribbons, etc. to prevent any danger or injury as well as to prevent blockage or damage to the appliance.
4. Only use the appliance as described in this manual.
5. Do not immerse the appliance in water or any other liquid.
6. Always check the appliance for damage prior to use. If any damage is observed, do not use the appliance.
7. The appliance is intended for indoor use only.
8. Always switch the appliance OFF after use.
9. This appliance has no user serviceable parts. Do not attempt to access the internal components in the appliance.
10. This appliance is for personal use only, not designed for commercial use.
11. Do not use it outdoors.
12. Do not use the appliance if it is not working properly, if it has been dropped or if it has been immersed in any liquid.
13. Before using the appliance, ensure that the roller head is securely fitted.
14. Keep the appliance out of reach of young children and pets.
15. Do not use it on children or allow children to play with the appliance.
16. The appliance is not to be used by persons (including children) with reduced physical, sensory or mental capabilities, or lack of experience and knowledge, unless they have been given supervision or instructions concerning use of the appliance by a person responsible for their safety.
17. Children must be supervised to ensure that they do not play with the appliance.
18. For electrical safety, when using an external USB charger, do not operate the charger with a damaged cord or plug, if it is not working properly, if it has been dropped or damaged or dropped into water.
19. **IMPORTANT! Use only the original USB cable supplied with the product.**
20. Check that your supply voltage is the same as that stated on the USB charger.
21. When charging the appliance, the power switch must be set to OFF.

VERY IMPORTANT:

- Do not immerse the appliance in water or other liquids.
 - Ensure that the USB charger (not supplied) and/or USB cable does not get wet during use, i.e., water splashes etc.
 - Do not use your USB charger (not supplied) or the USB cable with wet hands.
 - Keep away from pets.
 - The unit must not be left unattended when in use.
22. Only charge the appliance from an Extra Low Voltage USB Charger (not supplied) with an output rating the same as indicated on the appliance rating label.
 23. It is normal for the charger to become warm to touch when charging.
 24. Use only attachments provided with the product.
 25. Keep the USB cable away from hot surfaces.
 26. Do not attempt to replace the batteries; this appliance has no user serviceable parts.
 27. Detach the roller heads for cleaning. Only the attachments can be washed under tap water.
 28. Do not submerge the appliance, nor make it flow under water-tap.
 29. Do not use salt water or boiling water. Also, do not use cleaning products that are designed for toilets, bathrooms or kitchen appliances.
 30. For cleaning, please refer to the "CLEANING AND MAINTENANCE" section.



This appliance contains batteries that are non-replaceable.



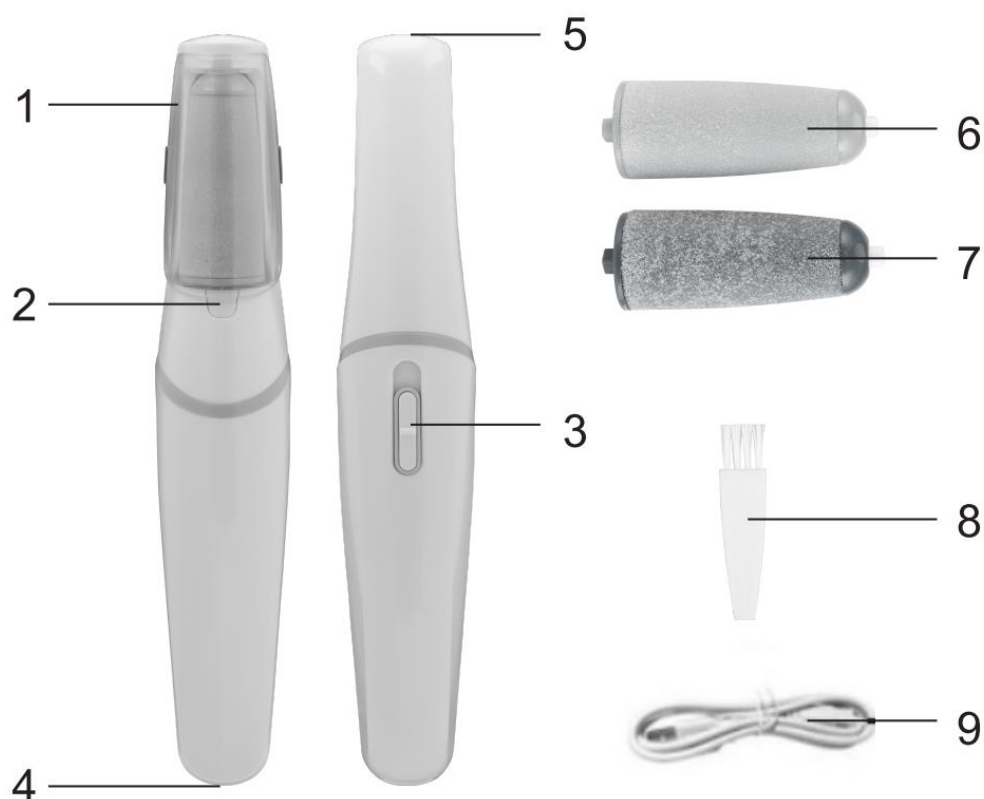
WARNING: Do not recharge non-rechargeable batteries.



WARNING: Do not use or store in temperatures above 40°C

Note: At the end of product lifecycle, before disposing the product, contact your local waste management authority for more information on Battery Recycling and disposal regulations in your area.

PARTS



- 1 Protective Cover
- 2 Indicator light
- 3 On/Off switch – 2 speeds
- 4 Charging port
- 5 Head release button

- 6 Lighter Coarse Roller Head
- 7 Coarse Roller Head
- 8 Cleaning brush
- 9 USB charging cable

CHARGING

- Fully charge the appliance before first use.
- Please make sure the power is to OFF before charging.
- Charging indicator illustrates **RED** when charging; it turns **OFF** when battery is fully charged.
- Charging time is approximately 1.5 hours and approx. 1 hour usage.
- When the battery is depleted, the product and indicator light will turn off automatically.
- For best performance, always use when the battery is fully charged.

OPERATING INSTRUCTIONS

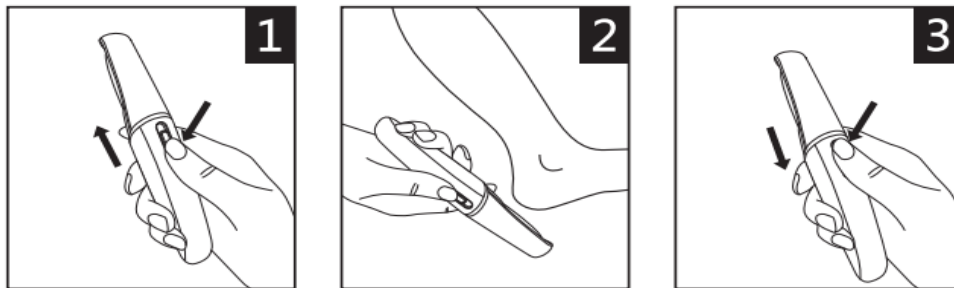


WARNING: Stop using if skin becomes sore or inflamed.

WARNING: Do not use on skin for more than 2-3 seconds at a time.

WARNING: If you feel any discomfort or irritation during use, stop using the product.

1. Wash and clean the skin and dry fully. **Note: Do not use on broken or bleeding skin.**
2. Make sure the roller head is securely inserted into the unit.
3. To turn on the unit, push the On/Off switch to position "1" or "2". (Fig.1)
4. **Speed setting 1 is slower, and setting 2 is faster. This is independent of the grit size of the grinding head."**
5. The indicator illuminates as long as the appliance is switched ON. This provides better visibility of skin.
6. Run the roller head over hard skin to gently exfoliate (Fig.2).
7. Wipe or rinse your feet to remove the exfoliated skin.
Remark: do not allow water to enter product!
8. After exfoliating, turn OFF the unit and cover the Roller with the protective cap for storage. (Fig.3)



**HELPFUL
HINTS**

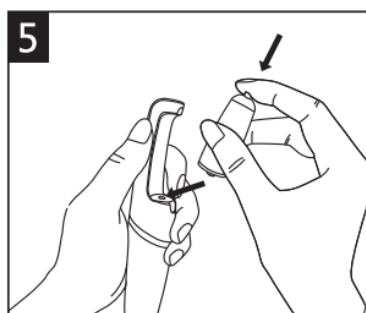
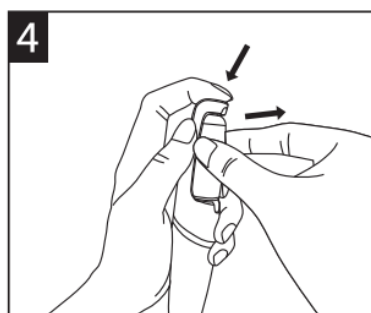
- Take a warm bath or shower before exfoliating. This will make your skin more pliable.
- To relax the skin, we recommend applying a moisture cream after exfoliation.

CHANGING ROLLER HEADS

Change the roller heads as needed for best result or when the current installed roller head is less effective.

Make sure the unit is turned OFF before replacing the roller heads.

1. *Press the button above* to remove the roller head (Fig.4).
2. Place a new roller head into the unit by firstly align and insert the bottom of roller head into the motor slot, then push the top part of roller inward towards the main unit until a click sound is heard (Fig.5). Ensure the new head has been firmly installed.



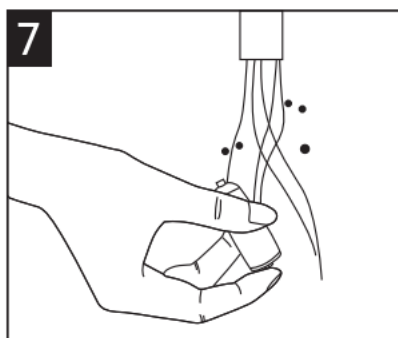
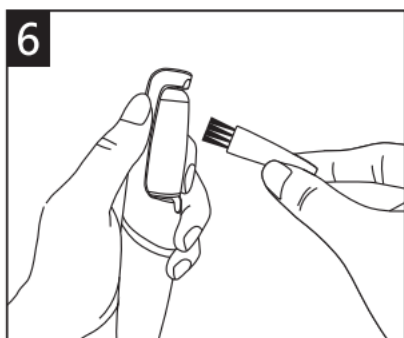
Note: Check the Roller head is securely attached to the device before use.

CLEANING AND MAINTENANCE

Note: Clean the appliance after each use to ensure better performance.

This callus roller heads can be rinsed under water for cleaning.

1. Always switch OFF the unit before cleaning.
2. Roughly clean the roller head with the cleaning brush. (Fig.6)
3. Rinse the roller head under the tap. (Fig.7)
4. Wipe the roller head with a clean dry cloth.
5. Replace the protective cover and store the unit in a dry place.



BATTERY DISPOSAL

The battery should be disposed safely. The appliance should be taken to a recycling facility and not disposed of with normal household waste.

IMPORTANT: Always fully discharge the batteries before disposing and ensure the charger (not supplied) is disconnected.

TECHNICAL SPECIFICATIONS

Model no.	BCM-1603
Working time	Approx. 1hr
Charging time	Approx. 1.5hr
Battery type	Li-ion, 600mAh, 3.7V x 1 cell

12 Month Warranty

Thank you for your purchase.

Your new product is warranted to be free from defects in materials and workmanship for the period stated above, from the date of purchase, provided that the product is used in accordance with accompanying recommendations or instructions where provided. This warranty is in addition to your rights under the Australian Consumer Law.

For New Zealand customers, this warranty is in addition to statutory rights observed under New Zealand legislation.

We will provide you with your choice of a refund, repair (where possible) or exchange (availability dependent) for this product if it becomes defective within the warranty period. The business will bear the reasonable expense of claiming the warranty.

This warranty will no longer apply where the defect is a result of alteration, accident, misuse, abuse or neglect.

Please retain your receipt as proof of purchase and contact our Customer Service Centre as listed below, for the entity you purchased this product from, for any difficulties with your product. Warranty claims and claims for expense incurred in returning this product can be addressed to the respective Customer Service Centre.

Our goods come with guarantees that cannot be excluded under the Australian Consumer Law. You are entitled to a replacement or refund for a major failure and compensation for any other reasonably foreseeable loss or damage. You are also entitled to have the goods repaired or replaced if the goods fail to be of acceptable quality and the failure does not amount to a major failure.

Contact for Kmart purchases	Contact for Target purchases
Kmart Australia Ltd. C/- Customer Service Centre 690 Springvale Road, Mulgrave Vic 3170 Customer Service: 1800 124 125 (Australia) or 0800 945 995 (New Zealand) or via Customer Help at kmart.com.au	Target Australia Pty Ltd C/- Customer Service Centre 2 Kendall Street, Williams Landing, Vic, 3027 Customer Service: 1300 753 567 or via Customer Help at target.com.au/help/contact-us