

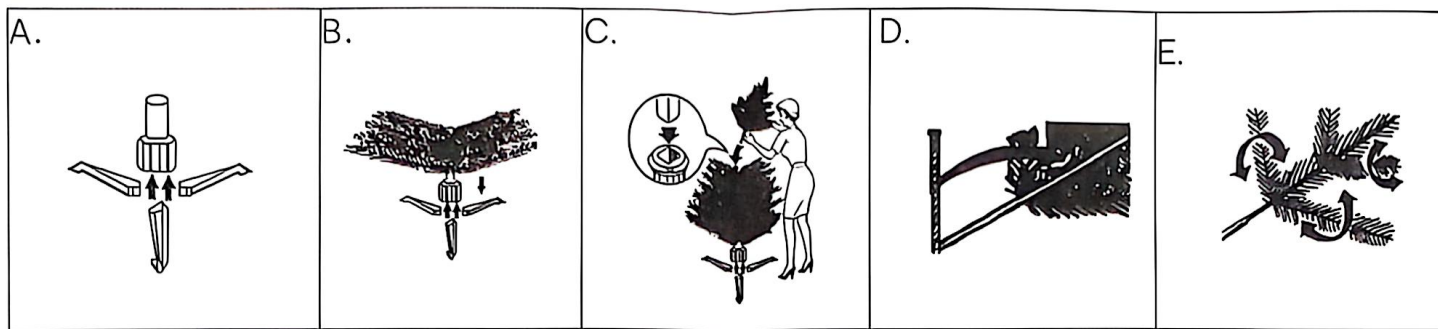
**1.82M (6FT) COLUMBIA CHRISTMAS  
TREE - TREE B**

**KEYCODE K: 43588718 T: 71293363  
F: KT-280**



**Contents**

- A. Tree Top**
- B. Tree Body**
- C. Plastic Stand**
- D. Connection Pole**



## Instructions

- 1) Slide stabilising legs into base of the tree trunk until firmly secure.
- 2) Place the tree stand on a level surface, assemble the tree stand and insert the connection pole into the tree stand.
- 3) Insert Section A into Section B
- 4) Lower all main branches on the bottom level and position so they are parallel to the floor, shape as desired.
- 5) For better result, straighten and separate all the small branches. Then, bend tip end slightly upward in a 'V' shape to match the rest of the tree.

## Warnings:

- 1) This product is for indoor use only.
- 2) Keep product away from fire and other heat sources
- 3) Recommend saving instructions for future reference.

## Packaging Up and Storage Tips

- 1) Remove all lights and ornaments.
- 2) Remove sections as places, Section A and Section B.
- 3) Slide legs down and remove from slots at the base of the tree truck.
- 4) Each tree section, the branches should be pressed against the stem before placing in carton.
- 5) Pack carton and store in a dry and damp free area.
- 6) Do not place product in direct sunlight or in an area where temperatures exceed 40 degrees.

**Made in China**