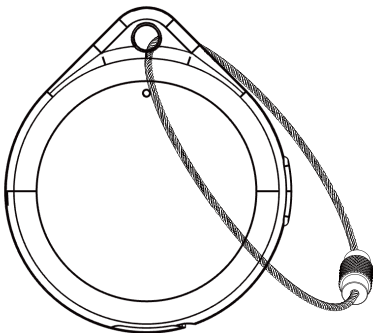


# MFI SMART TAG

User manual

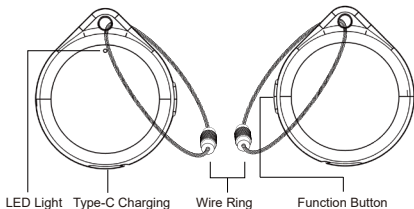


## Before using your Smart Tag

Please read the manual thoroughly and keep it for future reference. The Smart Tag is compatible with the Apple Find My app on your iPhone, iPad, iPod touch, or Mac. Please check the Apple App Store for the latest Find My App version updates.

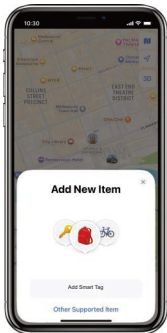
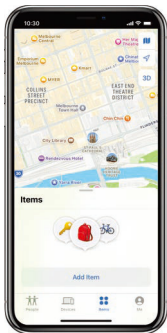
## Setting up Smart Tag

- 1 Ensure your Apple device has the Find My app installed and Bluetooth is on.
- 2 Press and hold the Function Button to turn on the Smart Tag. If the Smart Tag doesn't turn on, charge it first following the instructions in this manual.

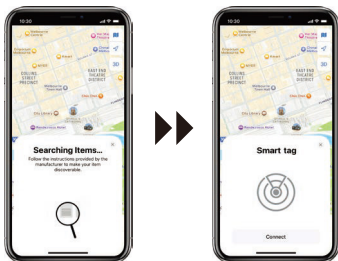


## Pairing the device

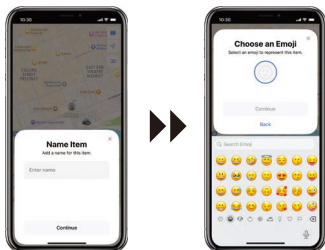
- 1 Open the Find My app on device.
- 2 Select 'Items' at the bottom of the screen.
- 3 Select 'Add Item' then tap 'Other Supported Item'.



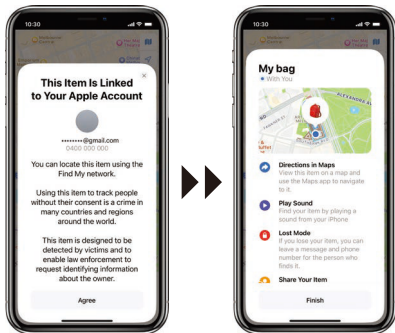
- 4 Wait until the Smart Tag appears on the search screen. Make sure the tag is close to your device for pairing.
- 5 Tap 'Connect' when the Smart Tag appears.



- 6 Follow the prompts to add an item name and an emoji.



- 7 Once the Smart Tag is linked, follow the prompts to complete the pairing.
- 8 Tap 'Finish' to complete set up.



## Finding items at close range

Select 'Play Sound' in the Find My app, or say "Hey Siri, find my bag" to play a sound on the Smart Tag. This function helps you locate items easily.

Playing sound only works when the Smart Tag is near your device (up to 20m in open space).

## Lost Item

When your phone cannot detect the tag, it will show in "Lost Item" on the Find My App menu. You can add your contact details by tapping "Show Contact info" and following the instructions provided in the app.

When the Smart Tag has "Lost Item" activated, you'll automatically receive a notification when it's detected by other devices in the Find My network.

## Removing the Smart Tag

- 1 Select your paired item in the Find My app
- 2 Scroll down to 'Remove Item' and follow the prompts.

After the Smart Tag is removed, it will go into pairing mode. If the Smart Tag is not paired for 10minutes, it will enter standby. Press Function Button to go back to Paring Mode.

## Charging your Smart Tag

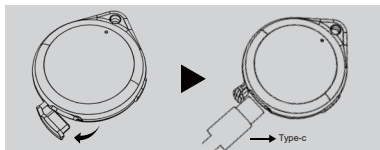
Type-C output end cable charging, charging power up to 0.45W.

Open the protective sleeve of the Smart Tag charging port and insert the Type-C charging cable as shown in the figure.

The red light will be on when charging. When it has finished charging the light will go off. Charging time takes about 3 hours.

The product supports charging with a 5V/1A charger. Only use the supplied cable to charge the smart tags.

Up to 4-month battery life. Actual usage time may vary depending on conditions. To ensure uninterrupted use, please charge the tag regularly.



### **Battery Status:**

The Battery indicator icon will appear in the Find My App when you are on the connected Tag's app information.

A Low Battery Alert will show in the Find My app, and you may receive a notification if your phone options allow notifications.

The Find My app performs a battery level check hourly to update its power stage display. Restarting the device will also refresh the battery status.



## **USING OTHER FUNCTIONS:**

### **1. Turning on from Sleep Mode**

Press and hold the Function Button. The Smart Tag will play a melody and LED will flash.

### **2. Checking connection status**

Double-press the Function Button. The Smart Tag will play a melody if it is linked to a device but not connected. The Smart Tag will beep if it's connected to an Apple device.

In all cases, the light will flash. If the Smart Tag is not linked to any device, it will play a melody without the light flashing. The Smart Tag will not respond if it is in Sleep Mode.

### **3. Activating Pairing Mode**

If the Smart Tag is not paired for 10 minutes, it will leave Pairing Mode. Press the Function Button once to enter Pairing Mode again, the tag will beep and the light will flash.

### **4. Checking a lost Smart Tag's contact information**

If you find a lost Smart Tag, you can use your phone to help return it to its owner. Press the Function Button on the found Smart Tag quickly six times. The Smart Tag will play a melody and the light will flash. Select 'Items' in the Find My app and 'Identify Found Item'. You'll be able to see the contact information left by the owner and the tag's serial number.



## 5. Turning off the Smart Tag

Press the button quickly five times. The Smart Tag will play a melody and the light will flash before entering Sleep Mode.

## 6. Resetting the Smart Tag

Quick-press the Function button 2 times, a beep or melody will play and the light will flash; then long-press and continue to hold the Function Button until a high pitch melody plays. (Note there may be additional beeping prior to the high-pitch melody depending on the Tag's status). This should be done in a single sequence. The tag is now reset. Resetting the Smart Tag will disconnect any paired device. You will need to pair and connect to your device again to locate the Smart Tag.

Note: Take care when selecting different function modes by pressing the function button as each button press sequence is preset for a different function (i.e. power off, reset, sleep etc).



Scan the QR code for a simple video guide.

## **FAQ:**

### **1. What is the Find My network? And how does it work?**

The Apple Find My network provides an easy, secure way to locate compatible personal items on a map using the Find My app on your iPhone, iPad, iPod touch, Mac, or the Find Items app on Apple Watch. Simply pair your compatible product with the Apple Find My app to view it right alongside your Apple devices. If your item ever goes missing, you can put it in Lost Mode to display a message and contact information to anyone who might find it. The Find My network is encrypted and anonymous, so no one else, not even Apple, can view its location.

### **2. When can the device be located?**

When a linked item is not with you or lost, it can be found by other Apple devices that are part of the Find My network.

### **3. How does the device discourage unwanted tracking?**


If any Find My network accessory separated from its owner is seen moving with you over time, you'll be notified in one of two ways:

- 1** If you have an iPhone, iPad, or iPod touch, Find My will send a notification to your Apple device. This feature is available on iOS or iPadOs 14.5 or later.
- 2** If you don't have an iOS device or a smartphone, a Find My network accessory that isn't with its owner for a period of time, it will emit a sound when it's moved. These features were created especially to discourage people from trying to track you without your knowledge.

## 4. How is my privacy protected?

Only you can see the location of your Smart tag. The Apple Find My network uses advanced encryption to ensure that no one else, not even Apple or the manufacturer, can view the location of your Smart Tag.

## Specifications

Device Name	Smart Tag
Battery	90mAh
Charging time	Approx. 3 hours
Standby time	Up to 4 months
Dust & Water resistance	IP64
Size	45.8x40.4x8.1mm
Input	5V  0.09A 0.45W

## **Regulatory safety information**

Without permission, any company, firm or user shall not alter the frequency, increase the power, or change the characteristics and functions of the original design of the certified lower power frequency electric machinery.

The application of low power frequency electric machineries shall not affect the navigation safety nor interfere a legal communication, if an interference is found, the service will be suspended until improvement is made and the interference no longer exists. The foregoing legal communication refers to the wireless telecommunication operated according to the telecommunications laws and regulations. The low power frequency electric machinery should be able to tolerate the interference of the electric wave radiation electric machineries and equipment for legal communications or industrial and scientific applications.

Use of the 'Works with Apple' badge means that a product has been designed to work specifically with the technology identified in the badge and has been certified by the product manufacturer to meet Apple Find My network product specifications and requirements. Apple is not responsible for the operation of this device or use of this product or its compliance with safety and regulatory standards. Apple, Apple Watch, iPad, iPadOS, iPod touch, Mac, and macOS are trademarks of Apple Inc., registered in the U.S. and other countries. IOS is a trademark or registered trademark of Cisco in the U.S. and other countries and is used under license.



Works with

**Apple Find My**

iOS - App Store FindMy

All Images, Information and Content are Copyright

© 2025 Directed Electronics Australia Pty Ltd.

All rights reserved.



**R-NZ**