

Folded Size: 80x120mm
CMYK Printing
Material: XXXXXXXXXXXX

80mm

anko

Wireless Smart Monitor User Manual
Keycode K: 43-587-223 | T: 71-268-170
ANKO43587223

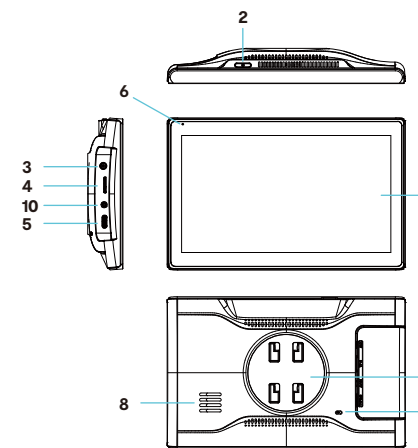


120mm

1.0 PACKAGE CONTENTS

1 x 7" Wireless Smart Monitor
1 x 12/24V Power Adaptor with USB Type-C Cable
1 x AUX Cable
1 x Dash/ Window Suction Mount
User Manual

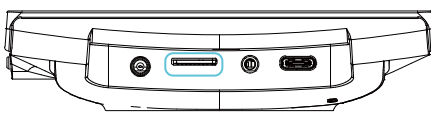
2.0 PRODUCT OVERVIEW



1. Display Screen
2. Power Button: Long press to power on/off. Short press to turn on/off display.
3. AUX Input.
4. MicroSD Card Slot (Not included).
5. USB Type-C Power Input Connector.
6. Built-in Microphone.
7. Mounting Connection.
8. Built-in Speaker.
9. Reset Button: Press this button to restart the device. (All pre-saved information will be lost).
10. AV Input: Use to connect a compatible rear view camera. Not supplied with this model.

3.0 MICRO SD CARD INSTALLATION

Please insert the memory card into the MicroSD Card slot with the chip contact surface facing down. Insert until you hear a click. Maximum card compatibility 128GB.



4.0 POWER CONNECTION

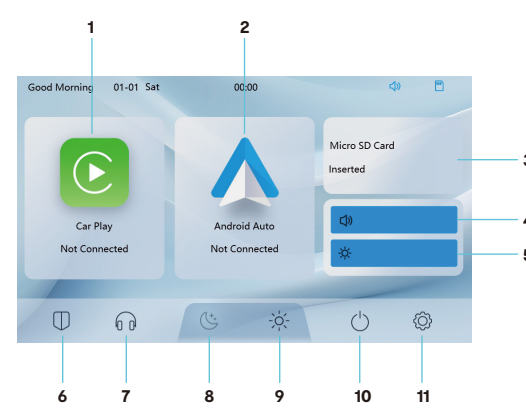
- Only use the supplied 12/24V power adaptor to power the device.
- Once the device is securely installed on the windscreen or dashboard, plug the 12/24V power adaptor into the vehicle's 12/24V power port.
- Run the cable along the vehicle's dashboard and plug the USB Type-C connector into the device.

4.1 AUTO POWER ON/OFF

When the device is correctly installed and connected to the 12/24V power port, it will automatically power up when the vehicle ignition is turned on.

NOTE:
The Device is designed to be powered only by the supplied DC power plug. Its internal battery is NOT designed for primary use. Note some cars may power on automatically without the need to turn on the ignition.

5.0 HOME SCREEN



1. **Apple CarPlay:** Select for instructions to connect to iPhone.
2. **Android Auto:** Select for instructions to connect to Android Phones.
3. **MicroSD Card Content**
4. **Volume Button:** Touch to adjust volume.
5. **Brightness Button:** Touch to adjust the screen brightness.
6. **Do Not Disturb Mode:** Touch to enable auto-reject of incoming calls.
7. **Audio Output:** Touch to change the sound output via Bluetooth, FM, AUX, or the built-in speaker.
8. **Dark Mode:** Change background to Dark.
9. **Light Mode:** Change background to Light.
10. **Display Button:** Touch to turn-off screen, touch anywhere on the screen again to turn it on.
11. **Settings:** Touch to open Settings Menu.

5.1 APPLE CARPLAY

FIRST-TIME CONNECTION
Select the Apple CarPlay icon to show the connection instructions. After the first connection, it will show 'Connected' and display the Apple CarPlay menu.

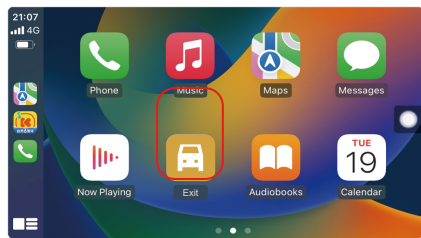
5.1.1 IPHONE SET-UP



- Turn on Bluetooth and Wi-Fi on your iPhone.
- Pair your iPhone with the Smart Monitor by following below.
- Open your phone's Bluetooth connection, find the Bluetooth Pairing name ANKO43587223-XXXX (XXXX being unique number) in the bluetooth list and select pair. (If a pin code is requested, please input 0000).
- After successful Bluetooth pairing, the Wi-Fi will automatically connect between the device and your iPhone.
- Allow Contacts and Favorites Sync will pop-up on your phone, please select "Allow".
- "Use CarPlay with Device" will pop-up on your phone, please select "Use CarPlay".
- ANKO43587223-XXXX (XXXX being unique number) and your iPhone will pair automatically each time the Smart Monitor is powered on when your iPhone is in close proximity.

NOTE:
Connecting for the first time will take slightly longer. Only compatible with iOS13.0 or higher.

Press Exit to return to the main screen. When this screen is powered on, it will automatically connect to the last connected phone.



5.2 ANDROID AUTO

FIRST-TIME CONNECTION
Select the Android Auto icon to show the connecting instructions. After the first connection, it will show "Connected" and display the Android Auto menu.



5.2.1 ANDROID AUTO SET-UP HOW TO SET UP:

Select the Android Auto icon.

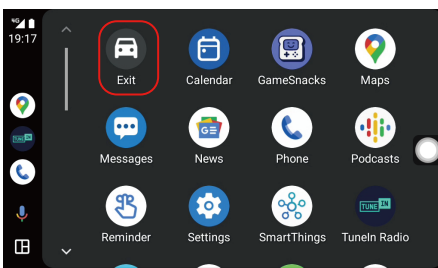
HOW TO SET UP:
Select the Android Auto icon.
Turn on Bluetooth and Wi-Fi on your Android phone.
In the Bluetooth Settings, select "Pair New Device" on your phone and find the Bluetooth Pairing name ANKO43587223-XXXX (XXXX being unique number) in the Bluetooth list and select pair. (If a pin code is requested, please input 0000).
Pair with ANKO43587223-XXXX (XXXX being unique number) will pop up on your phone, please select "Pair".

"Allow access to messages" will pop up on your phone, please select "Allow", it will then automatically enter the Android Auto interface.

ANKO43587223-XXXX (XXXX being unique number) and your Android Phone will pair automatically each time the Smart Monitor is powered on when your Android Phone is in close proximity.

Press Exit to return to the main screen.

NOTE:
Connecting for the first time will take slightly longer. Only compatible with Android 11.0 or higher.



6.0 AUDIO OUTPUT

Default sound output is set from the device's in- built speaker. To improve the sound experience it's recommended to change the sound output to Car Audio via Bluetooth, FM, or AUX. Car Audio is recommended.

6.1 CAR AUDIO

How to connect to car audio via Bluetooth
1. Select Icon 1.
2. Then select Icon 2.
3. Then select Icon 3.
4. Select Icon 4 to Turn Bluetooth On/Off.



6.2 FM TRANSMITTER

1. Select Icon 1.
 2. Then select Icon 2.
 3. Then select Icon 3.
 4. Then select Icon 4 to Turn On/Off.
- The FM Transmitter can be used to transmit audio from ANKO43587223-XXXX (XXXX being unique number) to your vehicle's speakers. When you turn the FM Transmitter, the ANKO43587223 will be muted. You will need to match the frequency of the ANKO43587223-XXXX (XXXX being unique number) to a free frequency channel on your vehicle's head unit.



6.3 AUX

1. Select Icon 1.
2. Then select Icon 2.
3. Then select Icon 3.
4. Select Icon 4 to turn On/Off.

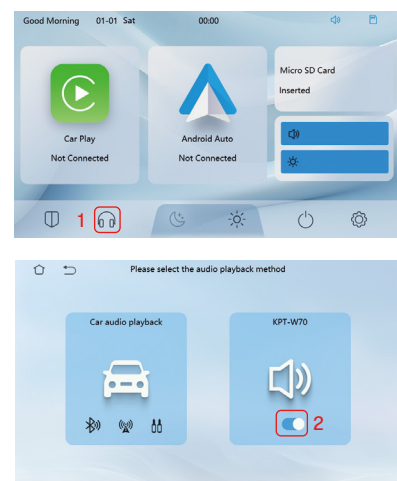
When ANKO43587223-XXXX (XXXX being unique number) is connected to the vehicles head unit AUX port via an auxiliary cable, select AUX to play the audio through the car stereo speakers.



7.0 BUILT-IN SPEAKER

If you wish to use the ANKO43587223-XXXX (XXXX being unique number) in-built speaker, follow steps below.

1. Select Icon 1.
2. Then select Icon 2 to turn On/Off.



8.0 MICRO SD CARD MEDIA FILE

The MicroSD Card can be used to store movies and music, which can be played once the card is inserted into the MicroSD Card slot. Please use compatible MICRO SD from makers such as SanDisk, Kingston, Toshiba, and Samsung. Please use minimum Class 10. Once the MicroSD Card is inserted correctly, there will be a small card image shown in the upper righthand corner. Click Media File to get access to music, video and image files on your MicroSD Card.

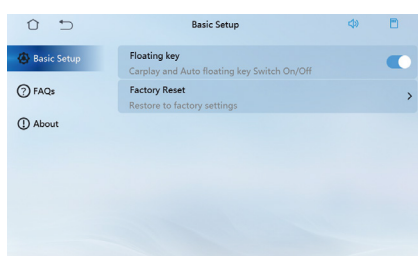


9.0 SETTINGS

Click the right icon on the menu bar.



10.0 BASIC SET UP



12 Month Warranty

Thank you for your purchase.

Your new product is warrantied to be free from defects in materials and workmanship for the period stated above, from the date of purchase, provided that the product is used in accordance with accompanying recommendations or instructions where provided. This warranty is in addition to your rights under the Australian Consumer Law. For New Zealand customers, this warranty is in addition to statutory rights observed under New Zealand legislation.

We will provide you with your choice of a refund, repair (where possible) or exchange (availability dependent) for this product if it becomes defective within the warranty period. The business will bear the reasonable expense of claiming the warranty. This warranty will no longer apply where the defect is a result of alteration, accident, misuse, abuse or neglect.

Please retain your receipt as proof of purchase and contact our Customer Service Centre as listed below, for the entity you purchased this product from, for any difficulties with your product. Warranty claims and claims for expense incurred in returning this product can be addressed to the respective Customer Service Centre.

Our goods come with guarantees that cannot be excluded under the Australian Consumer Law. You are entitled to a replacement or refund for a major failure and compensation for any other reasonably foreseeable loss or damage. You are also entitled to have the goods repaired or replaced if the goods fail to be of acceptable quality and the failure does not amount to a major failure.

Contact for Kmart purchases	Contact for Target purchases
Kmart Australia Ltd. C/- Customer Service Centre 690 Springvale Road, Mulgrave Vic 3170 Customer Service: 1800 124 125 (Australia) or 0800 945 995 (New Zealand) or via Customer Help at kmart.com.au	Target Australia Pty Ltd C/- Customer Service Centre 2 Kendall Street, Williams Landing, Vic. 3027 Customer Service: 1300 753 567 or via Customer Help at target.com.au/help/contact-us