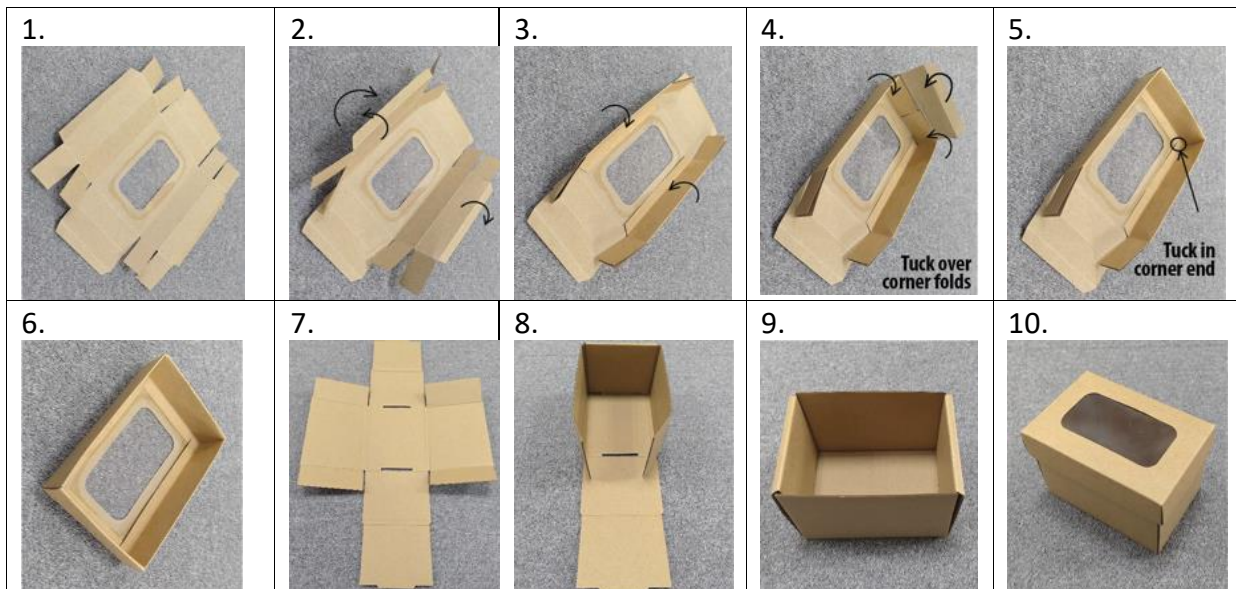


43584048 - 4PK SML REC GRAZING BOXES



Instructions



Step 1. Lay lid out flat

Step 2. Lift side panels and fold back end flaps

Step 3. Fold side panels inwards so end flaps sit flat against base

Step 4. Repeat action for end panels and tuck over corner folds

Step 5. End panels should now be locked into place

Step 6. Repeat for opposite end panel

Step 7. Lay box out flat, identify the side with the bending lines and place it facing upwards

Step 8. Folding just inwards along the bending lines. Tuck the sides into the box, forming the interior walls.

Step 9. Repeat action for opposite side panel

Step 10. Box Complete