



All In One Grooming Kit
Model no.: AD-292R
Instruction Manual



PLEASE READ AND SAVE THESE
INSTRUCTIONS FOR FUTURE REFERENCE

IMPORTANT SAFETY GUARDS

SAFETY GUIDE - PLEASE READ CAREFULLY BEFORE USING THIS APPLIANCE

Please follow all the precautions listed below for safety and to reduce the risk of injury or electric shock.



WARNING: READ ALL INSTRUCTIONS; FAILURE TO FOLLOW ALL INSTRUCTIONS LISTED BELOW MAY RESULT IN ELECTRIC SHOCK, OR SERIOUS PERSONAL INJURY.

1. Only use the appliance as described in this manual.
 2. This appliance contains batteries that are non-replaceable.
 3. Do not immerse the appliance in water or any other liquid, product is splash-proof only.
 4. Do not allow the appliance to be exposed to rain or moisture during use or storage.
 5. Always check the appliance for damage prior to use. If any damage is observed, DO NOT use the appliance.
 6. The appliance is intended for indoor use only.
 7. Always switch the appliance off after use.
 8. This appliance has no user serviceable parts. Do not attempt to access the appliance covers.
 9. This appliance is for personal use only, not designed for commercial use.
 10. Do not use it outdoors.
 11. Do not use the appliance if it is not working properly, if it has been dropped or if it has been immersed in any liquid.
 12. Before using the appliance, ensure that the clipper head/ trimmer head are securely fitted.
 13. Do not use the appliance on children.
 14. The appliance is not to be used by persons (including children) with reduced physical, sensory or mental capabilities, or lack of experience and knowledge, unless they have been given supervision or instructions concerning use of the appliance by a person responsible for their safety.
 15. Children being supervised to ensure that they do not play with the appliance.
 16. Do not operate if it is not working properly, has been dropped or immersed in any liquid.
 17. Only charge the appliance with the USB cable that was supplied with the appliance.
 18. Only charge the appliance with Extra Low Voltage Battery Charger (not supplied) with an output rating 5Vd.c. 1A, same as indicated on the appliance's rating label.
 19. When charging the appliance, make sure it is switched OFF.
 20. Check that your supply voltage is the same as that stated on the trimmer.
 21. When charging the appliance, the power switch must be OFF.
 22. It is normal for the charger to become warm to touch when charging.
 23. Use only attachments provided.
 24. This product contains sharp blades, please take the utmost care in handling and use.
 25. Do not replace the batteries with non-rechargeable batteries.
- IMPORTANT! To avoid personal injury, do not use the trimmer if it has a damaged blade or trimming head.**
26. DO NOT submerge the appliance, nor make it flow under water-tap.
 27. DO NOT use salt water or boiling water for cleaning. Also, do not use cleaning products that are designed for toilets, bathrooms or kitchen appliances.



WARNING: Do not recharge non-rechargeable batteries.



WARNING: Before charging the product, please make sure your hands are dry.



WARNING: Please use the charger we supplied with the appliance. Other chargers may cause electrical failure and/or fire.



WARNING

Only use the USB cable that was supplied with this Appliance.

Consumers are cautioned against trying to replace the battery. Using and/or purchasing counterfeit and/or inferior quality batteries have the potential to cause fire, personal injury, and/or damage to property. These batteries are typically found on online-auction websites or from other retailers and are known to pose a potential safety risk.

Never try to charge non-rechargeable batteries as they may explode or catch on fire or cause personal injury and/or damage to property.

- Batteries may explode if disposed of in fire.
- The battery is not replaceable. Do Not open the appliance.
- Do not use or store in temperatures above 40°C.



At the end of the appliance's life, it must be disposed of correctly.

Contact your local waste management authority for more information on Battery Recycling and disposal regulations in your area.

Do not dispose of electrical appliances or batteries as unsorted municipal waste, use separate collection facilities. Contact your local council for information regarding the collection systems available. If electrical appliances are disposed of in landfills or dumps, hazardous substances can leak into the groundwater and get into the food chain, damaging your health and well-being. Please contact your local council or regional authority for more information on the collection, reuse, and recycling programmes.

Read and Save These Instructions

PARTS



- | | |
|-------------------|---|
| 1. Storage base | 8. Nose & Ear Trimmer |
| 2. Main Unit | 9. Body Trimmer with comb |
| 3. USB cable | 10. Comb attachment for Hair trimmer (3/6/9/12mm) |
| 4. Cleaning brush | 11. Adjustable comb for Beard trimmer (1-4mm) |
| 5. Beard Trimmer | |
| 6. Hair Trimmer | |
| 7. Foil Shaver | |

CHARGING

IMPORTANT: This Appliance contains a built-in lithium-ion battery which must only be charged using the supplied USB cable.

Always switch off and unplug the USB cable when charging is completed or when not in use.

DO NOT allow to charge for more than 2 hours.

Normal charge takes approximately 1.5 hours.

If any abnormality occurs during charging, (such as burning smell or excessive heat or even a strange sound) immediately turn off the charger and disconnect the USB cable.

IMPORTANT: The Appliance must be fully charged before first use.

- Take the USB Cable and fully unravel it before using it to charge the Appliance.
- Plug the small end of the USB cable directly into the bottom of the appliance.
- Plug the large end of the USB cable into your 5Vd.c. 1A USB charger (not supplied) and switch on.
- The Charging Indicator will illuminate RED, indicating the battery is charging.
- When full charged, the Charging indicator will show BLUE.
- Unplug the USB charging cable from the appliance.

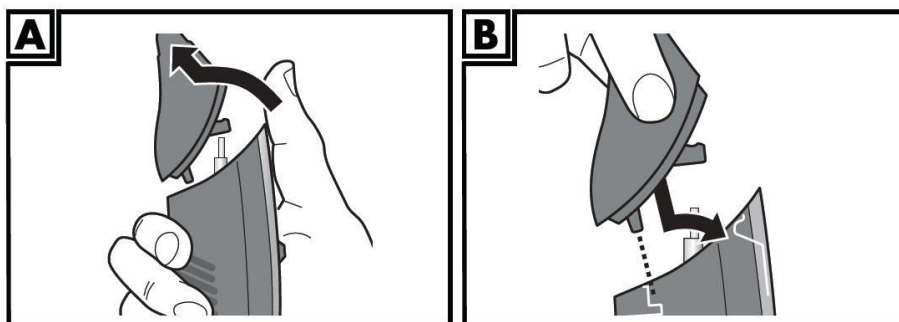
OPERATING INSTRUCTIONS

Changing the attachment

Switch off the device before you attach or remove the attachments.

Figure A (To Remove): Use your thumb to press the attachment towards the rear of the trimmer.

Figure B (To attach): Put the lower flap of the attachment into the slot in the trimmer and press the upper part of the attachment against the trimmer until it audibly locks into place and sits firmly in position



Hair Trimmer



WARNING:

Switch off the device before replacing or changing the attachments



NOTES:

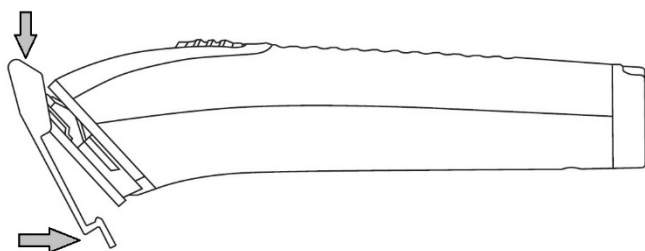
The hair to be dressed must be dry.



NOTES:

The cutting length may deviate depending on the cutting angle. Please start with a comb attachment with a longer cutting length and then select a shorter cutting length attachment as required.

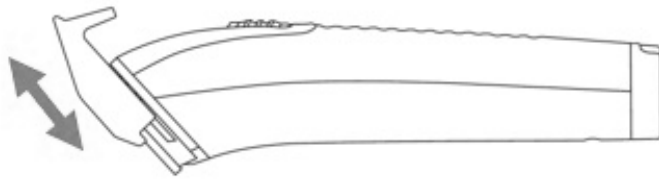
1. Attach the hair trimmer to the main unit.
2. Insert comb attachments with desired length, press carefully over the hair trimmer head to the bottom end of the comb attachment until it locks into place.



3. Turn on the hair trimmer.
4. Start by cutting hair in neck or on the sides and cut towards the centre of the head. Then, cut the front section of the hair towards the centre of the head.
5. Hold the device so the comb attachment rests flat on the head. Move the device evenly through the hair.
6. If possible, cut against direction of hair growth.
7. In order to catch all the hair, move the device several times through the same section of the hair.
8. Comb the hair repeatedly and well.

Beard Trimmer

1. Slide the beard comb into the guiding grooves on both sides of the handle.



2. Slide the comb to the desired setting. The beard comb cuts hair to a length of 1-4mm.
3. Comb the beard in the direction of growth.
4. Cut the beard from the ear to chin downward.
5. Use the beard trimmer attachment without the comb attachment will cut the beard very short or to cut the moustache and hairline.

Foil Shaver

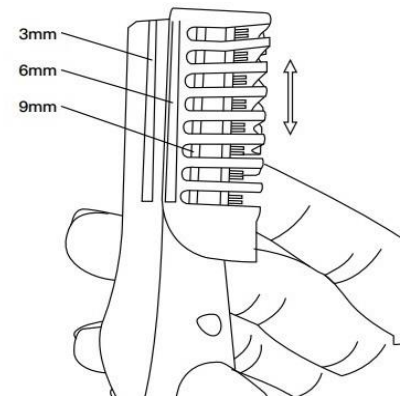
1. Before using the shaver, always check it for wear and damage. If the shaver shows signs of wear or damage, do not use or it may cause injury.
2. Pre-trim the contours as desired with the hair trimmer or precision trimmer.
3. Gently press the shaver onto the skin and shave along contoured edges to remove any stubbles. Do not press too hard.
4. Any areas that are harder to shave, such as chin, stretch the skin for a better result.

Nose/Ear Trimmer

1. Slowly insert the metal tip into one of your nostrils or ears.
2. Move the device in circles to cut the hair.

Body Trimmer

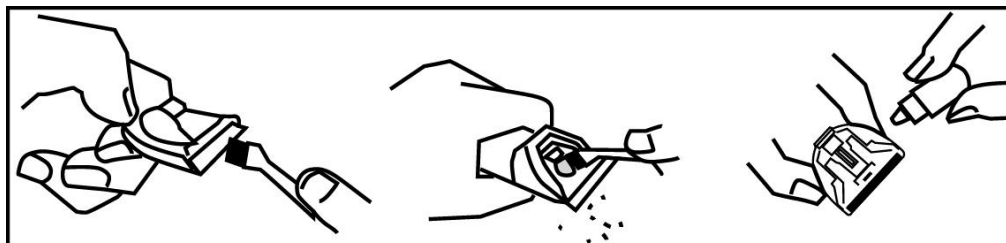
1. Attach the dual blade body trimmer to the main unit.
2. There are 3 rails at trimmer head. Insert comb attachment at different rails to give varies trimming length.
3. Turn on the trimmer, then in a scooping motion move the comb through the hair against the growth of hair. Working your way slowly so as not to snag or pull when cutting longer hair.



CLEANING AND MAINTENANCE

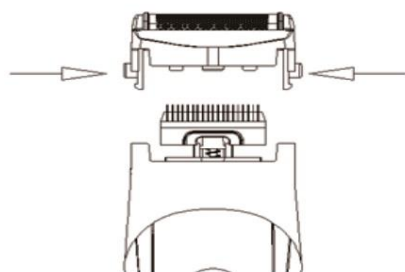
Trimmer Head

- Always switch OFF the trimmer before cleaning.
- Remove the accessory and the used blade. Clean it with the cleaning brush supplied with the product.



Shaver Head

- Separate the foil from cutting blade by pressing both side buttons.
- Carefully clean using the cleaning brush provided.



Main Unit

- Use a damp cloth to clean the main unit then dry it thoroughly.
- Storage the groomer and attachments in the pouch to prevent damage.

TECHNICAL SPECIFICATIONS

Working time	Approx. 1.5 hour
Charging time	Approx.1.5 hour
Input voltage	5V = 1.0A
Battery type	Li-ion, 600mAh, 3.7V x1 cell
Water resistance	IPX5

12 Month Warranty

Thank you for your purchase.

Your new product is warranted to be free from defects in materials and workmanship for the period stated above, from the date of purchase, provided that the product is used in accordance with accompanying recommendations or instructions where provided. This warranty is in addition to your rights under the Australian Consumer Law.

For New Zealand customers, this warranty is in addition to statutory rights observed under New Zealand legislation.

We will provide you with your choice of a refund, repair (where possible) or exchange (availability dependent) for this product if it becomes defective within the warranty period. The business will bear the reasonable expense of claiming the warranty.

This warranty will no longer apply where the defect is a result of alteration, accident, misuse, abuse or neglect.

Please retain your receipt as proof of purchase and contact our Customer Service Centre as listed below, for the entity you purchased this product from, for any difficulties with your product. Warranty claims and claims for expense incurred in returning this product can be addressed to the respective Customer Service Centre.

Our goods come with guarantees that cannot be excluded under the Australian Consumer Law. You are entitled to a replacement or refund for a major failure and compensation for any other reasonably foreseeable loss or damage. You are also entitled to have the goods repaired or replaced if the goods fail to be of acceptable quality and the failure does not amount to a major failure.

Contact for Kmart purchases	Contact for Target purchases
Kmart Australia Ltd. C/- Customer Service Centre 690 Springvale Road, Mulgrave Vic 3170 Customer Service: 1800 124 125 (Australia) or 0800 945 995 (New Zealand) or via Customer Help at kmart.com.au	Target Australia Pty Ltd C/- Customer Service Centre 2 Kendall Street, Williams Landing, Vic, 3027 Customer Service: 1300 753 567 or via Customer Help at target.com.au/help/contact-us