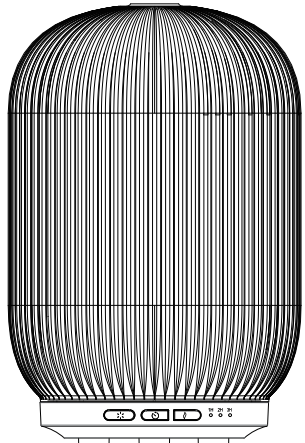


110mm

K: 43555239 | T: 71004532
Noir Aroma Diffuser
Instruction Manual



Create an aromatic, soothing atmosphere in your home. Use ultrasonic vibration to transform water into mist. Essential oil can be added to create fragrance.

Important!

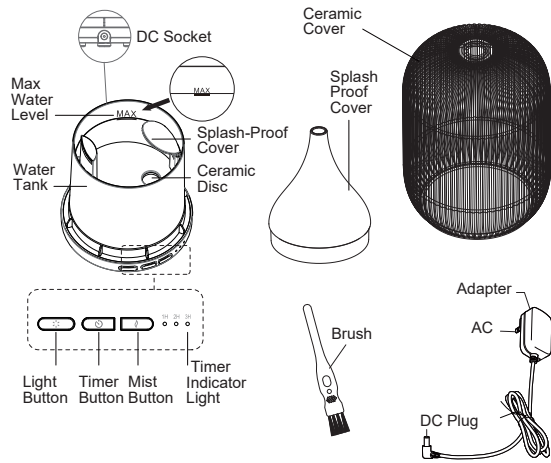
Care should be taken with the use of diffusers around animals. Both the choice of essential oils and where animals are should be taken into consideration when in use. For details regarding filling, please refer to section "OPERATION" of the user manual. For details regarding cleaning and descaling, please refer to section "CLEANING AND MAINTAINENCE" of the user manual. Unplug the appliance during filling and cleaning.

Warning

- Important safety instructions:
The following safety precautions should always be followed to reduce the risk of electric shock, personal injury or fire. It is important to read all of these instructions carefully before using the product, and to save them for future reference or new users.
- Unplug the appliance during filling, refilling and cleaning.
- This appliance is not intended for use by persons (including children) with reduced physical, sensory or mental capabilities, or lack of experience and knowledge, unless they have been given supervision or instruction concerning use of the appliance by a person responsible for their safety.

- Children should be supervised to ensure that they do not play with the appliance.
- The appliance is only to be used with the recommended vaporizing medium. The use of other substance may give rise to toxins or create a fire risk.
- Use supplied AC adaptor only.

Names Of Parts



Includes

Main unit
AC Adapter: Input 100~240V. a.c Output 24V.d.c

FUNCTIONS

Mist(Power) Button

1st press: the continuous mist mode will turn on
2nd press: switch to intermittent mist with 15 seconds interval. When change to intermittent mist mode, product will flash once
3rd press: turn off the mist
Please note: you also can long press around 2 seconds to turn off .

Timer Button

1st press: set the timer for 1 hour and the indicator light will turn on
2nd press: set the timer for 2 hours and the indicator light will turn on
3rd press: set the timer for 3 hours and the indicator light will turn on
4th press: turn off

Please note:

- You can long press around 2 seconds to turn off.
- The timer setting only work during mist function operation.

Light button:

1st press: turn the light on and colour will automatically change from White-Red-Yellow-Green-Cyan-Blue-Purple
2nd press-15th press: change and fixed the color from light white-white-light red- red-light yellow-yellow-light green-green-light cyan-cyan-light blue-blue-light purple-purple
16th press: turn off the light
Please note: you also can long press around 2 seconds to turn off.

Water tank

The machine has a water level detector which will automatically power off the unit if water is too low. Please ensure there is always adequate water to avoid damaging the diffuser.

Auto shut off function

When water is running out, the unit will flash red light 3 times and then turn off. The machine will automatically power off if abnormal overheating is detected. When product with LED lights ON stops automatically due to water running out, pressing mist mode will also turn ON and resume previous LED lights setting.

Cleaning and maintenance

The machine should be cleaned after using for 3-5 days continuously, to keep it working normal and extend the lifetime.
1. Unplug the machine before cleaning.
2. Please clean water tank with a brush and white vinegar or dilute with detergent and warm water. Others part of the cover can be cleaned with a soft cloth.
3. Please do not put the whole machine or base into water. Temperature of water should not exceed 40 degrees when cleaning.
4. When the machine is not used for a long period of time, please pour out the water in the tank and wipe off the drops, then place it in a shady and cool place to avoid direct sunlight.
5. Please clean the tank regularly.

正面

100mm

100mm

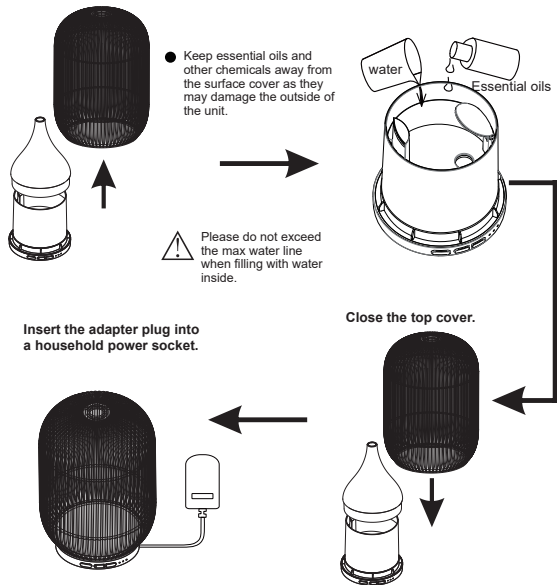
100mm

100mm

100mm

Operation

Open the top cover. Add water up to max water level into the water tank then add 2 to 3 drops of essential oil, depending on your preference of more or less fragrance.



Caution:

Please do not pour out water through the air outlet as this can damage the inside of the machine.



Attention

- To prevent less or no steam from the diffuser, do not add water above the max level mark.
To prevent melting damage, do not add more than 5 drops of essential oil into the container.
- Do not use as a medical respirator
 - Do not use the product when there is an abnormal noise or the diffuser is overheating abnormally.
 - Do not cover or block the mist outlet or air inlet
 - Do not take off the cover during operation of the diffuser
 - Do not place near an electric device such as computer, TV or audio equipment.
 - Do not use hot water or mineral water. Always use tap water or distilled water.
 - Keep out reach of children and pets.

Troubleshooting

If you start the diffuser but it doesn't work, please check the following diagnosis.

Problems	Possible Reasons	Solution
No electricity, not working.	Power not connected	Connect the power, press the timer button.
	Power wire broken or adaptor burnt out.	Please contact Kmart/Target.
Unable to spray mist or spray is bad	Is the water leave low?	Please fill with more water.
	Is there too much water inside the tank?	If the water volume exceeds 120ml (max water line), the mist volume will be minimal.
	Is the ceramic disc dirty?	Please clean the water tank.
	Is the top cover correctly placed?	Please place top cover in the correct position.
Main body is leaking water.	Is the bottom air inlet dirty?	Please clear away the dust in the bottom air inlet.
	Is the top cover correctly covered?	If the top cover is not correctly covered, the water will splash out and fall onto the machine body or table.
	Condensation moisture on the body may be caused by low-temperature or a humid environment.	Please avoid low-temperature and humid environments.

12 Month Warranty

Thank you for your purchase.
Your new product is warrantied to be free from defects in materials and workmanship for the period stated above, from the date of purchase, provided that the product is used in accordance with accompanying recommendations or instructions where provided. This warranty is in addition to your rights under the Australian Consumer Law. For New Zealand customers, this warranty is in addition to statutory rights observed under New Zealand legislation.

We will provide you with your choice of a refund, repair (where possible) or exchange (availability dependent) for this product if it becomes defective within the warranty period. The business will bear the reasonable expense of claiming the warranty. This warranty will no longer apply where the defect is a result of alteration, accident, misuse, abuse or neglect.

Please retain your receipt as proof of purchase and contact our Customer Service Centre as listed below, for the entity you purchased this product from, for any difficulties with your product. Warranty claims and claims for expense incurred in returning this product can be addressed to the respective Customer Service Centre.

Our goods come with guarantees that cannot be excluded under the Australian Consumer Law. You are entitled to a replacement or refund for a major failure and compensation for any other reasonably foreseeable loss or damage. You are also entitled to have the goods repaired or replaced if the goods fail to be of acceptable quality and the failure does not amount to a major failure.

Contact for Kmart purchases	Contact for Target purchases
Kmart Australia Ltd. C/- Customer Service Centre 690 Springvale Road, Mulgrave Vic 3170 Customer Service: 1800 124 125 (Australia) or 0800 945 995 (New Zealand) or via Customer Help at kmart.com.au	Target Australia Pty Ltd C/- Customer Service Centre 2 Kendall Street, Williams Landing, Vic, 3007 Customer Service: 1300 753 567 or via Customer Help at target.com.au/help/contact-us

反面

110mm