

# CAMERA BUBBLE MACHINE

## INSTRUCTIONS

3+  
years



### PARTS

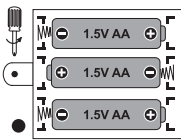


(A) X 1



(B) X 1

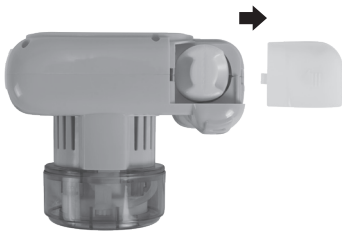
### BATTERY INSTALLATION



REQUIRES 3 X 1.5V AA BATTERIES  
(NOT INCLUDED).

### HOW TO PLAY

①



Open the compartment door.

②



Rotate the bubble solution bottle anticlockwise to  
remove it from the machine.

### HOW TO PLAY

③



Pour bubble solution into the  
bottle. Important: Ensure enough  
bubble solution is added.

④



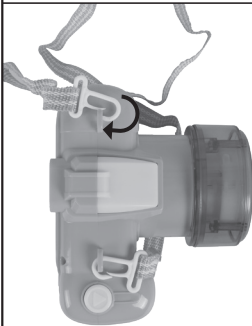
Rotate the bubble solution bottle clockwise  
to ensure it is tightly locked in the machine.

⑤



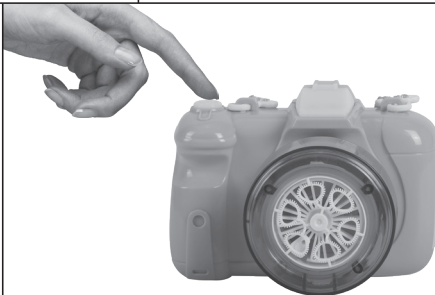
Close the compartment door.

⑥



Attach the hook of  
the lanyard to the  
corresponding hole.

⑦



Press ON/OFF button to play.

**WARNING:** BATTERIES ARE TO BE INSERTED WITH THE CORRECT POLARITY (+ AND -). DO NOT MIX DIFFERENT TYPES OF BATTERIES OR NEW AND USED BATTERIES. NON-RECHARGEABLE BATTERIES ARE NOT TO BE RECHARGED. RECHARGEABLE BATTERIES ARE ONLY TO BE CHARGED UNDER ADULT SUPERVISION. THE SUPPLY TERMINALS ARE NOT TO BE SHORT-CIRCUITED. REMOVE BATTERIES FROM THE TOY WHEN NOT IN USE FOR AN EXTENDED TIME OR WHEN BATTERIES BECOME EXHAUSTED. BATTERY INSTALLATION BY AN ADULT IS REQUIRED. DISPOSE OF BATTERIES RESPONSIBLY. DO NOT DISPOSE OF IN FIRE.

**CAUTION:** DIRECT CONTACT WITH CLOTHING/FABRICS MAY CAUSE STAINING. LAUNDER AS PER CARE INSTRUCTIONS ON GARMENT AS SOON AS POSSIBLE.

**WARNING:** THIS TOY PRODUCES FLASHES THAT MAY TRIGGER EPILEPSY IN SENSITISED INDIVIDUALS.

**WARNING:** DON'T DRINK THE BUBBLE SOLUTION. NOT INTENDED FOR HUMAN CONSUMPTION. AVOID SWALLOWING THE BUBBLE SOLUTION. ADULT SUPERVISION REQUIRED. IF EYES GET IN CONTACT WITH BUBBLE SOLUTION, IMMEDIATELY FLUSH WITH PLENTY OF WATER. IF ANY IRRITATION OCCURS, SEEK MEDICAL ATTENTION IMMEDIATELY. IMPROPER USE CAN CAUSE STAINS ON CLOTHING. RECOMMENDED FOR OUTDOOR USE ONLY. DO NOT BLOW IN FACE, EYES OR HAIR. WASH HANDS THOROUGHLY AFTER USE.

**WARNING: CHOKING HAZARD**  
SMALL PARTS. NOT FOR CHILDREN UNDER 3 YEARS.

**WARNING:** FOR SAFETY REASONS, REMOVE ALL TAGS, LABELS AND PLASTIC FASTENERS BEFORE GIVING THIS TOY TO YOUR CHILD.

**CAUTION:** PROLONGED CONTACT CAN CAUSE SLIGHT IRRITATION. WASH HANDS AND AFFECTED SKIN THOROUGHLY WITH SOAP AND WATER AFTER USE.

ADULT ASSEMBLY REQUIRED.  
PRODUCT MAY VARY FROM THE IMAGE SHOWN.  
PLEASE KEEP THE PACKAGING FOR FUTURE REFERENCE.

K: 43-545-612 | T: 70-989-687

