

3+
YEARS

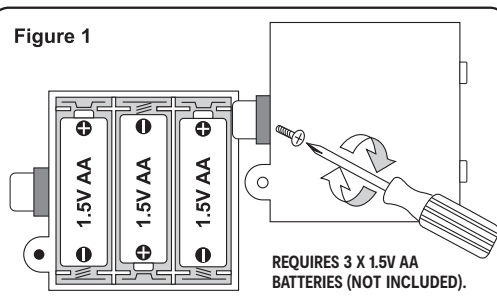
DUCK POP UP GAME



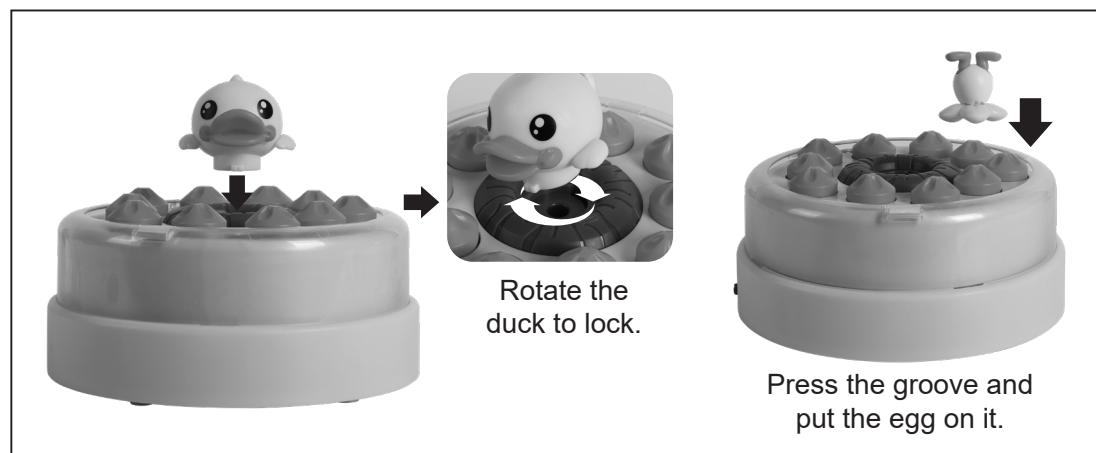
INSTALLING BATTERIES:

- 1 - Open the battery compartment.
- 2 - Insert 3 x 1.5V AA batteries with correct + and - polarities.
- 3 - Close the cover.

Figure 1



GAME INSTRUCTIONS:



WARNING: BATTERIES ARE TO BE INSERTED WITH THE CORRECT POLARITY (+ AND -). DO NOT MIX DIFFERENT TYPES OF BATTERIES OR NEW AND USED BATTERIES. NON-RECHARGEABLE BATTERIES ARE NOT TO BE RECHARGED. RECHARGEABLE BATTERIES ARE ONLY TO BE CHARGED BY AN ADULT. RECHARGEABLE BATTERIES ARE TO BE REMOVED FROM THE TOY BEFORE BEING CHARGED. THE SUPPLY TERMINALS ARE NOT TO BE SHORT-CIRCUITED. REMOVE BATTERIES FROM THE TOY WHEN NOT IN USE FOR AN EXTENDED TIME OR WHEN BATTERIES BECOME EXHAUSTED. BATTERY INSTALLATION BY AN ADULT IS REQUIRED. DISPOSE OF BATTERIES RESPONSIBLY. DO NOT DISPOSE OF IN FIRE.

WARNING: DO NOT AIM AT EYES OR FACE. DO NOT USE PROJECTILES OTHER THAN THOSE SUPPLIED BY MANUFACTURER.

WARNING: FOR SAFETY REASONS, REMOVE ALL TAGS, LABELS AND PLASTIC FASTENERS BEFORE GIVING THIS TOY TO YOUR CHILD.

WARNING: CHOKING HAZARD
SMALL PARTS. NOT FOR CHILDREN UNDER 3 YEARS.

ADULT SUPERVISION REQUIRED.
PRODUCT MAY VARY SLIGHTLY
FROM IMAGE SHOWN.
PLEASE KEEP PACKAGING FOR
FUTURE REFERENCE.



K: 43-545-322
T: 70-990-072