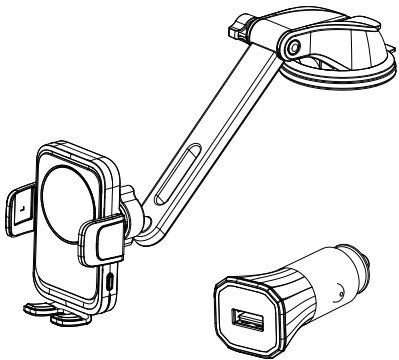


anko

Wireless Car Charger with Sucker Stand

User Manual

K: 43544738 I T: 70968750 (Model: JLR-80619)



● **Notice:**

Please read user manual carefully before any operations and keep it for your records.

● **Safety instructions:**

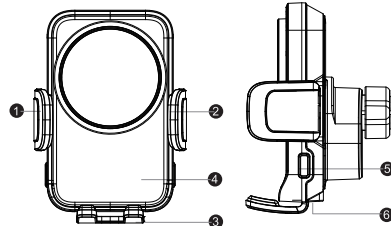
- 1.Do not disassemble or throw into fire or water, to avoid damage.
- 2.Do not use wireless charger in severely hot, humid or corrosive environments, to avoid circuit damage.
- 3.Do not place too close with magnetic stripe or RFID card (ID card, credit cards, etc.) to avoid magnetic failure.
- 4.Please keep the distance at least 30cm between implantable medical devices (pacemakers, implantable cochlear, etc.) and the wireless charger, to avoid potential interference with the medical device.
- 5.Some phone case may affect the charging performance. Ensure there is no any metal object between your phone cases. The wireless charger will stop charging if any metal object detected. In case of this issue, remove the phone case before charging.

- 6.Use with provided car charger only.

● **Package includes:**

- 1 x Qi Wireless Charging Pad
- 1 x Car Charger
- 1 x Stand
- 1 x User Manual
- 1 x 1m USB A to C charging cable

Product introduction



- ① Left arm clamp
- ② Right arm clamp
- ③ Bottom bracket
- ④ Wrap-around ambient light
- ⑤ Buttons to release/close arm clamps
- ⑥ Type-C charging port

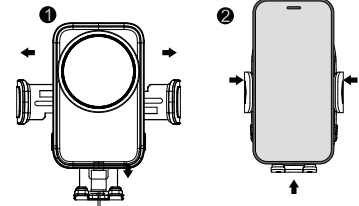
Product Specifications:

Input: 5V~3A, 9V~2A, 12V~1.67A

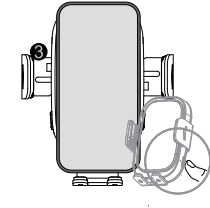
Wireless charging output: Max 7.5W for Iphone,
Max 15W for Android
Max 10W for Samsung

Charging time: approx 2.5 hours for 15W

Extendable arms

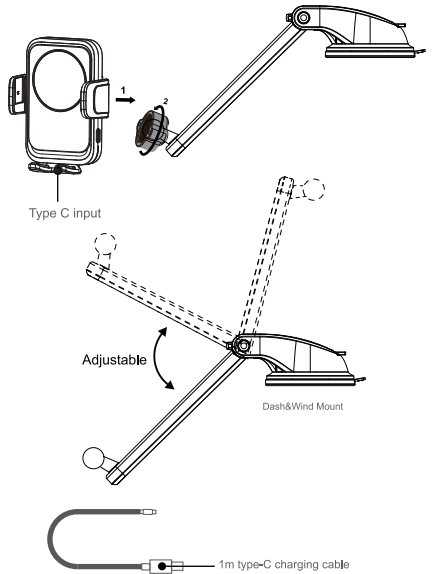


- 1 Arms and foot automatically open after connected to power
(Or touch the side button)
- 2 Place the phone in device will auto clamp and auto-align to the best charging area

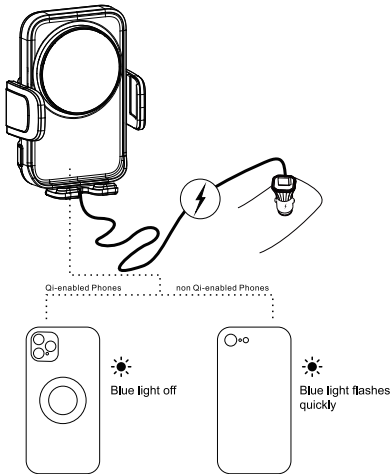


- 3 Press the side button to open the arms to take your phone

Air vent mount



Incorrect indication



Error: FOD(Foreign Object Detection)/overvoltage protection/
overtemperature protection/overcurrent protection

Lighting mode

Power on	Indicator light is blue
Charging	Indicator light off
FOD	Indicator light flash
Over voltage	Indicator light flash

Instructions for use

1.The product and the accessories are assembled and tightened by the ball head nut (compatible with other ball head diameter 17mm), and fixed in the suitable position of the car. Connect the product by car charger and cable.

2.After power on, the indicator light is always on, and it can automatically detect whether there is a mobile phone on the product:

- ① When there's a phone on it, the clamping arms hold the phone in a constant state.
- ② Without a phone on it, the product will automatically open its arms and bottom support within 5 seconds to wait for the phone to be put upon it. When the mobile phone is placed on the product, the bottom support holds the mobile phone, the wireless charging coil will sense the metal parts of the mobile phone through the FOD, depending on the size of the phone, the bottom holder and the clamp-arms move simultaneously to the center of the coil, to automatically clamp the phone and charge it (if the phone has a wireless charging function) , because the ratio of length to width of the phone is basically the same, so the positions of the charging coil and the receiving coil are automatically aligned relative to each other. The charging efficiency can be ensured without adjusting the base support manually.

3. In order to ensure the efficiency and stability of charging, the best wireless charging distance is ≤4mm and can not penetrate the metal, so need to avoid using metal or too thick mobile phone case, this allows the phone to charge quickly and wirelessly . (Charging distance ≥4mm is inefficient and ≥6mm may not charge)
4. The Way to remove the phone:
Click any button on the left or right, clamp-arms and bottom support are open to the maximum, waiting to take out the phone.
5. If the product does not turn on the light or flicker, button and wireless charging does not work, clamp-arms do not open or close, please stop using and return to the seller for solving the problem.

Product description

- Wireless charging for devices that meet Qi wireless charging standards.
- Wireless charger supports 15W fast charging, Universal Apple and Android models.
- Wireless charging detective: when the mobile phone with wireless charging function close to machine and be sensed, it will open the left and right arm to automatically clamp the mobile phone, and start wireless charging.
- Foreign object detective: when a phone without wireless charging function is close to the machine and be sensed, the machine opens the clamp-arms and also automatically clamp the phone, it is used as a normal phone stand without charging.
- Fixed in the car air outlet, 360°adjustable, you can adjust the direction of your phone at will.
- Circuit protection function: over-current protection, overheat protection, short circuit protection

12 Month Warranty

Thank you for your purchase.
Your new product is warranted to be free from defects in materials and workmanship for the period stated above, from the date of purchase, provided that the product is used in accordance with accompanying recommendations or instructions where provided. This warranty is in addition to your rights under the Australian Consumer Law.
For New Zealand customers, this warranty is in addition to statutory rights observed under New Zealand legislation.

We will provide you with your choice of a refund, repair (where possible) or exchange (availability dependent) for this product if it becomes defective within the warranty period. The business will bear the reasonable expense of claiming the warranty. This warranty will no longer apply where the defect is a result of alteration, accident, misuse, abuse or neglect.

Please retain your receipt as proof of purchase and contact our Customer Service Centre as listed below, for the entity you purchased this product from, for any difficulties with your product. Warranty claims and claims for expense incurred in returning this product can be addressed to the respective Customer Service Centre.

Our goods come with guarantees that cannot be excluded under the Australian Consumer Law. You are entitled to a replacement or refund for a major failure and compensation for any other reasonably foreseeable loss or damage. You are also entitled to have the goods repaired or replaced if the goods fail to be of acceptable quality and the failure does not amount to a major failure.

Contact for Kmart purchases	Contact for Target purchases
Kmart Australia Ltd. C/- Customer Service Centre 690 Springvale Road, Mulgrave Vic 3170 Customer Service: 1800 124 125 (Australia) or 0800 945 995 (New Zealand) or via Customer Help at kmart.com.au	Target Australia Pty Ltd C/- Customer Service Centre 2 Kendall Street, Williams Landing, Vic, 3027 Customer Service: 1300 753 567 or via Customer Help at target.com.au/help/- contact-us