

K: 43-543-861 | T: 71-016-252

3+ years

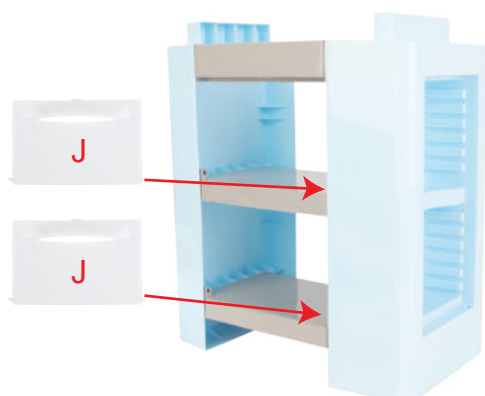
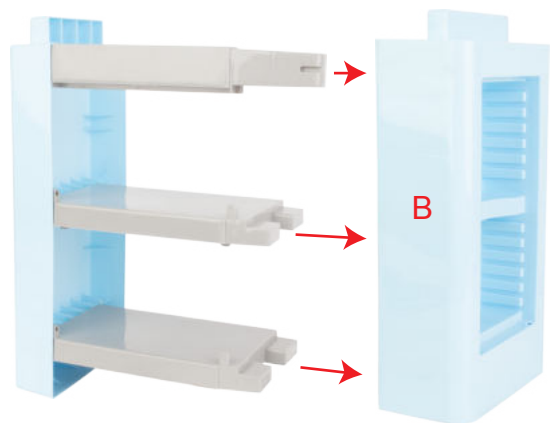
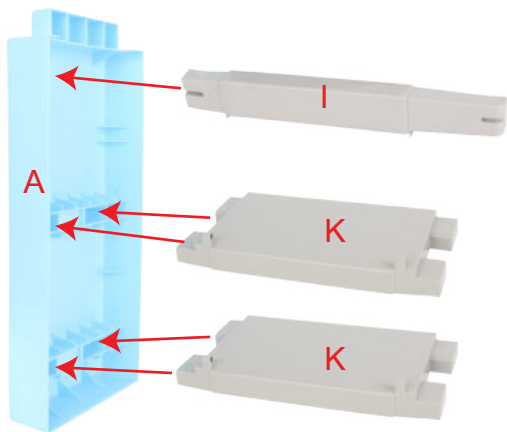
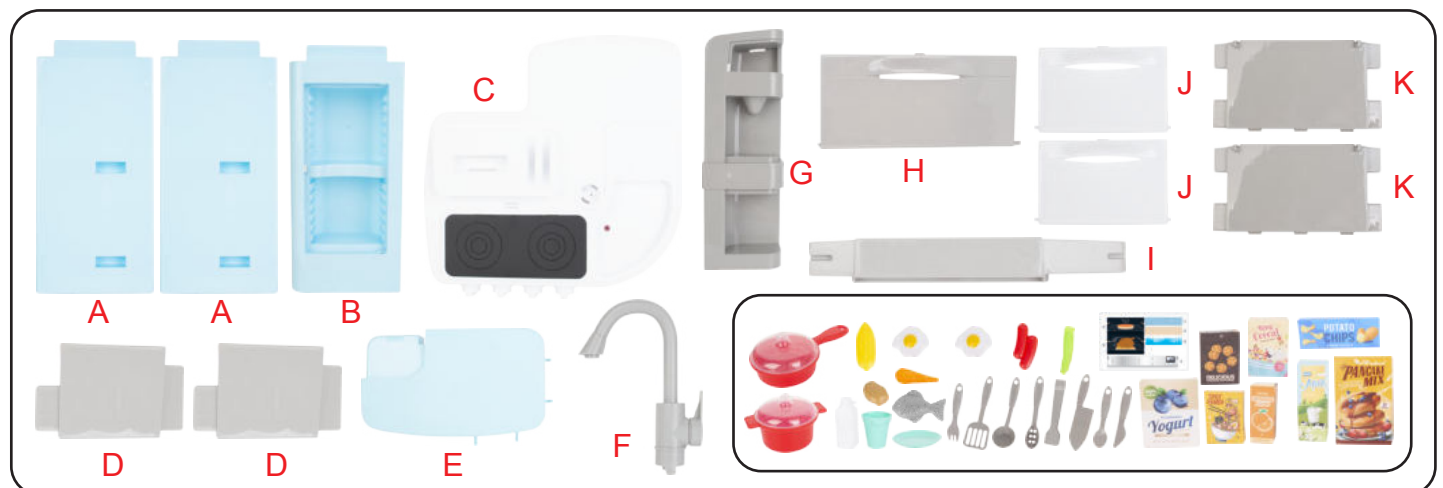
32

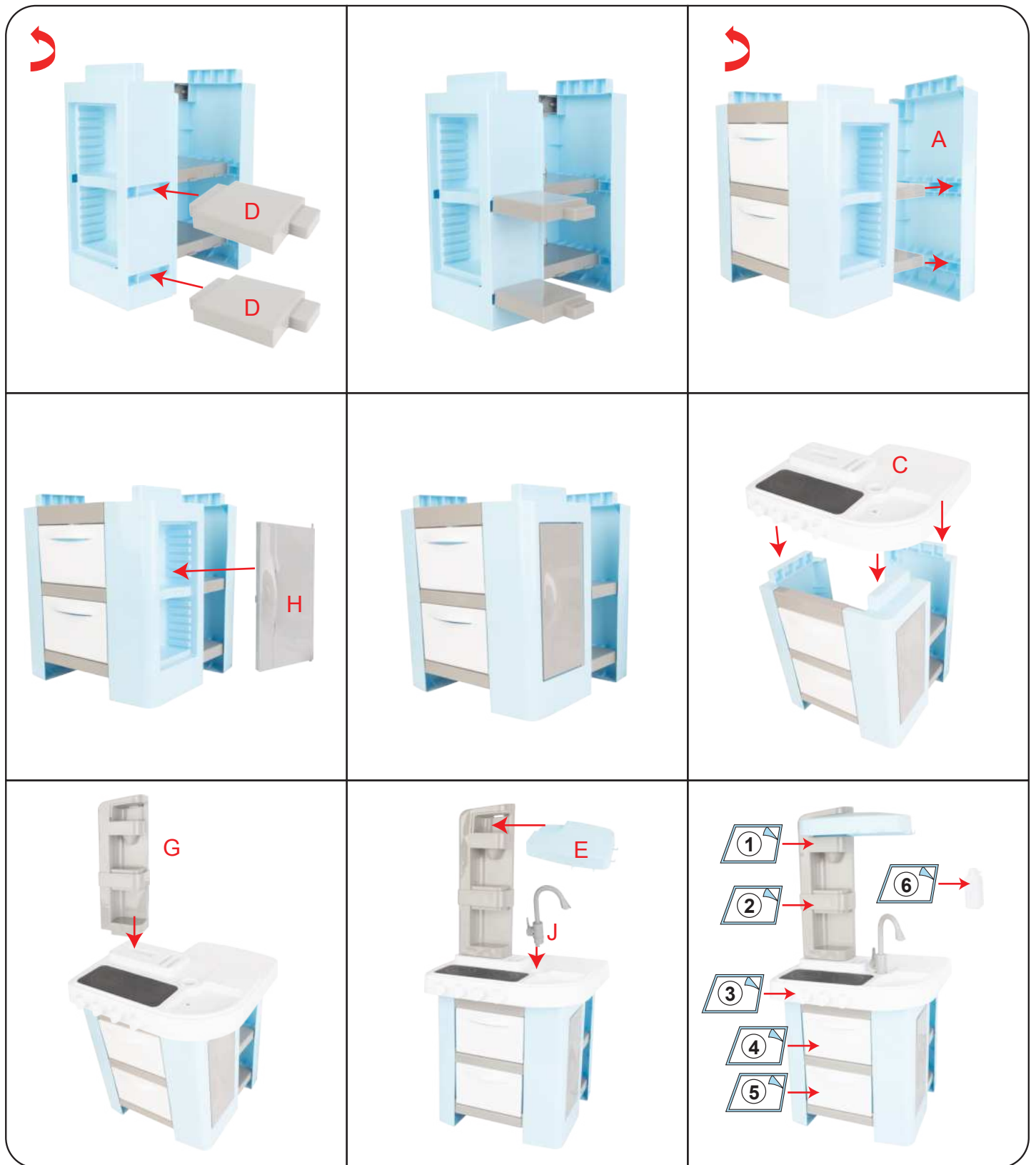
## PIECES



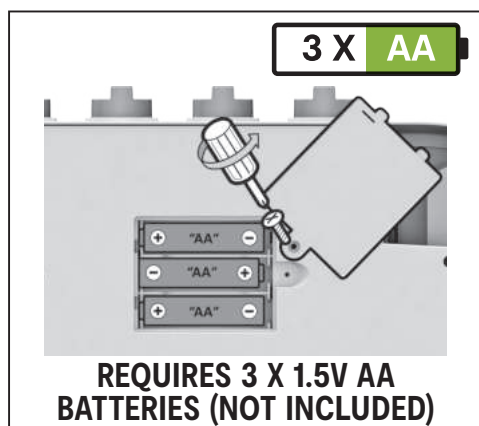
**BATTERY  
POWERED**

# Assembly Instruction





#### BATTERY DIAGRAM:



**WARNING:** CHOKING HAZARD-SMALL PARTS. NOT SUITABLE FOR CHILDREN UNDER 3 YEARS.

**WARNING:** FOR SAFETY REASONS, REMOVE ALL TAGS, LABELS AND PLASTIC FASTENERS BEFORE GIVING THIS TOY TO YOUR CHILD.

**CAUTION:** CLEAN ALL PLAY PIECES THOROUGHLY BEFORE AND AFTER USE. THIS IS A TOY, INTENDED FOR ROLE PLAY ONLY. NOT SUITABLE FOR USE WITH REAL FOOD OR BEVERAGES.

ADULT ASSEMBLY IS REQUIRED.  
PRODUCT MAY VARY FROM IMAGE SHOWN.  
PLEASE KEEP THE PACKAGING FOR FUTURE REFERENCE.

MADE IN CHINA

**CUSTOMER SERVICE:**  
KMART AU: 1800 124 125  
KMART NZ: 0800 945 995  
TARGET AU: 1300 753 567



**WARNING:** BATTERIES ARE TO BE INSERTED WITH THE CORRECT POLARITY (+ AND -). DO NOT MIX DIFFERENT TYPES OF BATTERIES OR NEW AND USED BATTERIES. NON-RECHARGEABLE BATTERIES ARE NOT TO BE RECHARGED. RECHARGEABLE BATTERIES SHOULD BE CHARGED BY AN ADULT. RECHARGEABLE BATTERIES ARE TO BE REMOVED FROM THE TOY BEFORE BEING CHARGED. THE SUPPLY TERMINALS ARE NOT TO BE SHORT-CIRCUTED. REMOVE BATTERIES FROM THE TOY WHEN NOT IN USE FOR EXTENDED TIME OR WHEN BATTERIES BECOME EXHAUSTED. BATTERY INSTALLATION BY AN ADULT IS REQUIRE. DISPOSE OF BATTERIES RESPONSIBLY. DO NOT DISPOSE OF IN FIRE.