

Size:220*165mm
folded:110*165mm

front side

back side

Cleaning & Maintenance:

- 1) Turn the appliance off before you start cleaning it.
- 2) Do not immerse the appliance in water. Clean its surface with a dry cloth or a cloth moistened with water.
- 3) Do not use any lubricant, detergent, polishing agents, alcohol, steel wool, abrasive cleansers, chemicals or corrosive liquids on this appliance.

Battery and appliance disposal:

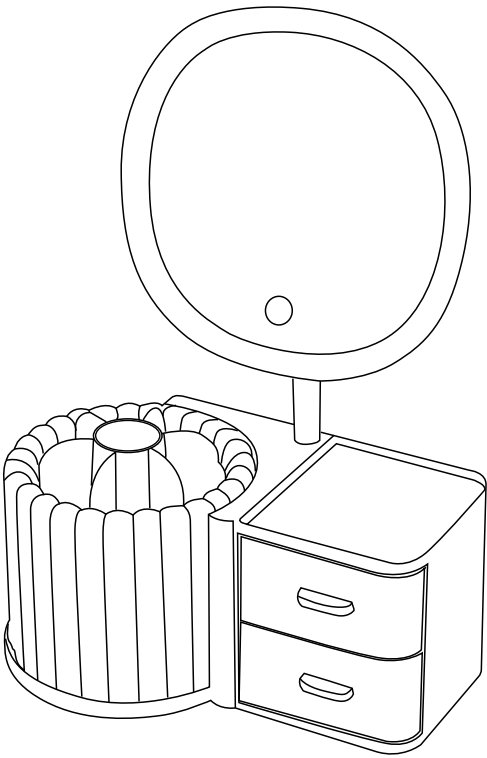
This appliance contains a lithium battery. Batteries contain substances harmful to the environment; do not dispose of the appliance with regular household waste. Instead, take it to an official recycling point.

Trouble Shooting

Problem	Possible Cause	Solution
LED Light is not bright enough or it does not turn on	The battery is running low or is out of power	Charge the appliance as guided

anko

K: 43-543-687 | T: 70-964-912
Model No: 381971
Cosmetic Organiser with Mirror
INSTRUCTION MANUAL



Battery and appliance disposal:

To ensure the proper operation of this appliance, please read this instruction manual carefully before using the appliance and save it for future reference.

⚠ WARNING

- Check the appliance before use; do not use it if there are any cracks, gaps, or other signs of damage.
- Make sure the mirror is not placed in a location or position where it can reflect sunlight, as reflected sunlight may cause a fire.
- Do not attempt to repair, disassemble, or modify the appliance yourself, as this may lead to accidents.
- The light source of this mirror is not replaceable; when the light source reaches the end of its life, the whole mirror must be replaced.
- For indoor use only

⚠ CAUTION

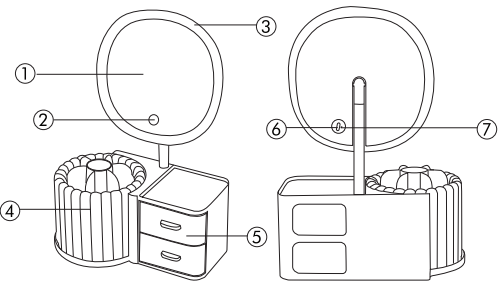
- Avoid touching the mirror with sharp objects to prevent scratches that could affect its functionality.
- This appliance contains a lithium battery. Do not place or store the appliance in a hot or humid environment for extended periods. If you do not intend to use the appliance for a long time, store it only after it has been fully charged.
- This appliance contains battery and LED lights that are non-replaceable.
- Ensure using SELV charging adapter which is compatible with a 5V/1A rating.

Specifications:

- Charging Voltage/Current: 5V == /1A
- Type of Battery: Li-polymer 3.7V 1200mAh
- Ta: 25°C

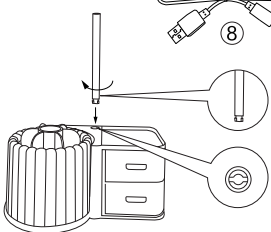
Product Description (picture 1):

- ① Normal mirror
- ② Switch
- ③ LED light
- ④ Rotatable base
- ⑤ Drawer
- ⑥ Charging port
- ⑦ Charging indicator
- ⑧ Type C cable



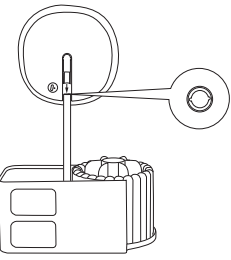
Picture 1

Step 1



To insert the pole, align the pole terminal to the hole of base, then rotate 90 degree clockwise to fix.

Step 2



Align and fix the pole with the mirror part.

Attention: Rotated the pole 90° counterclockwise when you need to pick pole up.

Using the Appliance:

※ Charging the appliance takes about 4 hours, and it can be used continuously for up to about 3-4 hours for the lightest model. The charging indicator will be red while the mirror is charging and will change to green, when fully charged.

- 1) Plug the small end of the USB cable into the port located on the back of the mirror. Use only the supplied USB cable for charging.
- 2) Press the switch to toggle between modes : white light, warm light, warm white light, OFF (long press to adjust the brightness).