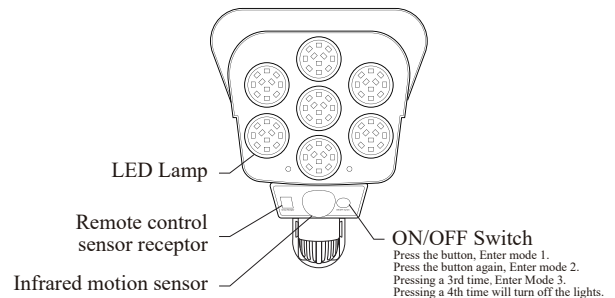


K: 43543205 | T: 70963465 SOLAR MOTION SENSOR SECURITY LIGHT SLR-24106

IMPORTANT SAFETY INSTRUCTIONS:

The following safety precautions should always be followed, to reduce the risk of electric shock, personal injury or fire. It is important to read all of these instructions carefully before using the product, and to save them for future reference or new users.

1. This product must only be used as intended in accordance with the enclosed operating instructions.
2. If the luminaire stops unexpectedly or appears to malfunction, seek professional advice to rectify the fault or make repairs.
3. Keep the luminaire away from sources of heat, sharp objects or anything that may cause damage.
4. Use only a microfiber and dry cloth for cleaning the product.
5. The light source of this luminaire is not replaceable; when the light source reaches its end of life the whole luminaire shall be replaced.
6. The battery is non-replaceable. DO NOT attempt to replace it.
7. This product is not a toy, keep out of reach of children and pets
8. When using for the first time, place the product in a sunny place for charging for about 13 hours.
9. When the product is not used for a long time, please place the product in a sunny place for charging for 1 day. In order to maintain the function of the battery, it is better to put it in the sufficient sunlight once a month.
10. The charging time and charging efficiency of solar panels may be affected by weather and installation location. Considering the conversion rate of solar power generation, if the product is used in good weather, it will increase the charging efficiency and effectiveness.
11. When there is sunlight and other lights, or the power switch is turned off, the LED light will not be on day and night.
12. The solar lamp should be installed in the place with effective light to ensure that the solar panel can fully absorb the sunlight, so as to extend the working time of the solar lamp. Shadows from buildings, trees, walls/hedges and similar objects should be avoided if possible as these will reduce performance.
13. The angle and light direction of the solar lamp should be adjusted to the best position, and the recommended height is 2-3m.
14. In winter or short sunshine time, it is recommended to use solar lamp in mode 1.
15. Some condensate may form inside the unit or solar panel in cold conditions. This is normal and can be ignored.
16. Outdoor use only.



Product specification

- Bulb rating: LED Max. 2W
- Type of Battery: Li-ion 3.7V 1200mAh
- Solar panel charging voltage: 4.5-5V
- Detectable angle: 150°
- Detectable distance: 4 m
- Protection rating: IP44

Remote control parameter

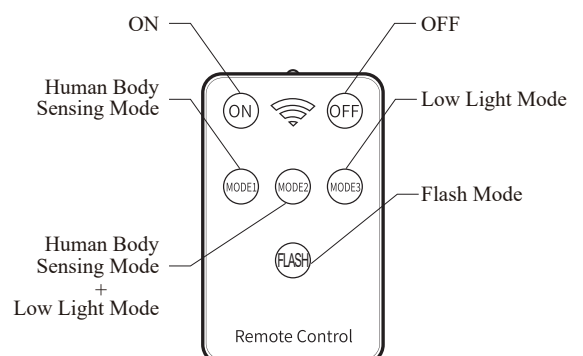
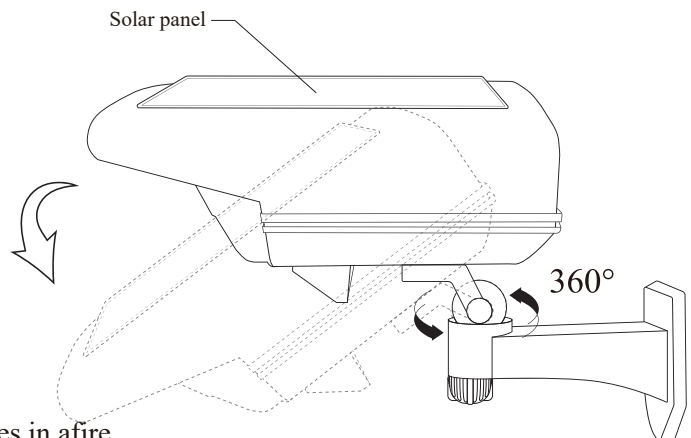
- 2 * 1.5V AAA batteries required (batteries not included).
- Never mix different types or old and new batteries.
- Do not short circuit supply terminals or dispose of batteries in a fire.
- Remove batteries during long period of non-use.
- ON: turn on the lighting fixture.
- OFF: turn off the lighting fixtures.

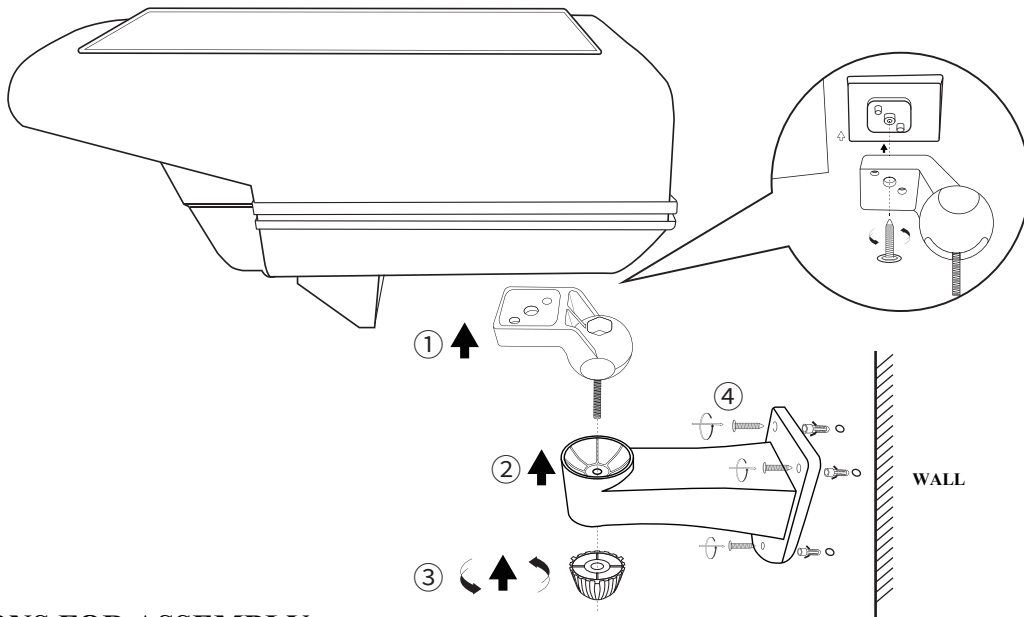
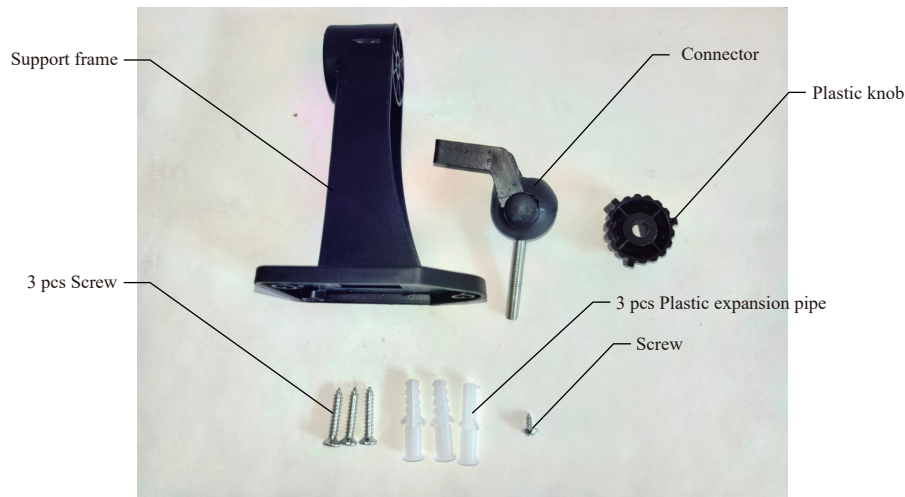
MODE 1: Human body sensing mode (the light is on when a person passes by, and it is off 15 seconds after the person leaves) If the detector always detects the human movement, the light will stay on.

MODE 2: Human body sensing mode + low light mode (the light will be on when people pass by, and keep 15 seconds after person leave. Then go into low light mode. And will be on again when detects person again)

MODE 3: Low light mode (always in low light whatever there is person or not).

FLASH: Pressing it will enter flash mode.





INSTRUCTIONS FOR ASSEMBLY

1. Caution: Assemble the lamp completely before use it.
2. As shown ①②③ in the above figure, complete the installation of the lighting fixtures..
3. As shown ④, fix it in the desired position, and adjust to the optimal position.
4. Check to ensure that all the components have been assembled correctly.
5. Open it with the remote control and start using it after fully charged.

Trouble shooting

Problem	Possible Reasons	Solution
Unit does not work	Cloudy days, insufficient sunlight result in low battery levels.	After sufficient exposure to sunlight, work will continue.
	The human body is too far away from the lighting fixture. Or beyond the detection angle.	Please approach the detection range of the lighting fixture.
	There are other light sources nearby.	Please check if there are no other light sources nearby before installation.
	The solar charging panel is damaged.	Please contact local retailer.
	The service life has come to an end.	Please replace the lighting fixtures.
The remote control not work	Insufficient power supply.	Replace the battery.
	The remote control is damaged.	Please contact local retailer.
Some light bulbs are not on	Poor or damaged contact.	Seek professional advice to rectify the fault or make repairs.