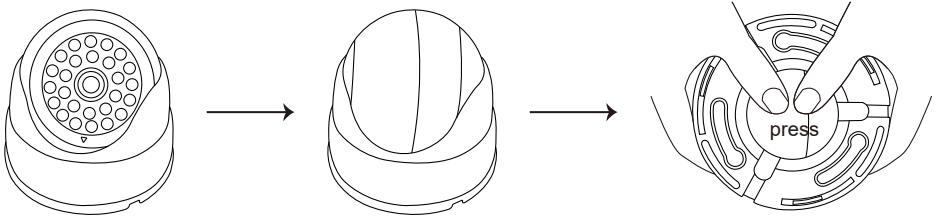


anko

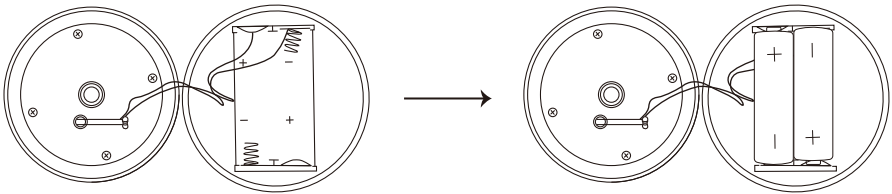
Dummy Camera

K: 43-542-161 | T: 70-961-928

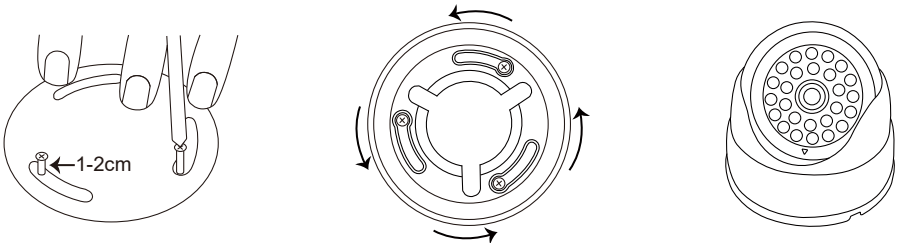
Model: ZB202419191304



STEP1: rotate the lens to the position shown in the picture then press down to take out the battery compartment.



STEP2: rotate to open the battery cover, install two AA size batteries,(not included).



STEP3: use the attached mounting paper to locate the position of mounting screws, install the screws, leaving about a 1-2cm gap.

STEP4: align the base with the screw position and rotate,make sure the base is securely attached.

STEP5: reinstall the camera and Installation is complete.

WARNING: INSTALL BATTERIES TO CORRECT POLARITY. DO NOT MIX DIFFERENT TYPES OF NEW OR USED BATTERIES. INSTALLATION BY ADULT REQUIRED. DISPOSE OF BATTERIES RESPONSIBLY. DO NOT DISPOSE OF IN FIRE. KEEP OUT OF REACH OF CHILDREN.

12 Month Warranty

Thank you for your purchase.

Your new product is warranted to be free from defects in materials and workmanship for the period stated above, from the date of purchase, provided that the product is used in accordance with accompanying recommendations or instructions where provided. This warranty is in addition to your rights under the Australian Consumer Law. For New Zealand customers, this warranty is in addition to statutory rights observed under New Zealand legislation.

We will provide you with your choice of a refund, repair (where possible) or exchange (availability dependent) for this product if it becomes defective within the warranty period. The business will bear the reasonable expense of claiming the warranty. This warranty will no longer apply where the defect is a result of alteration, accident, misuse, abuse or neglect.

Please retain your receipt as proof of purchase and contact our Customer Service Centre as listed below, for the entity you purchased this product from, for any difficulties with your product. Warranty claims and claims for expense incurred returning this product can be addressed to the respective Customer Service Centre.

Our goods come with guarantees that cannot be excluded under the Australian Consumer Law. You are entitled to a replacement or refund for a major failure and compensation for any other reasonably foreseeable loss or damage. You are also entitled to have the goods repaired or replaced if the goods fail to be of acceptable quality and the failure does not amount to a major failure.

Contact for Kmart purchases	Contact for Target purchases
Kmart Australia Ltd. C/- Customer Service Centre 690 Springvale Road, Mulgrave Vic 3170 Customer Service: 1800 124 125 (Australia) or 0800 945 995 (New Zealand) or via Customer Help at kmart.com.au	Target Australia Pty Ltd C/- Customer Service Centre 2 Kendall Street, Williams Landing. Vic, 3027 Customer Service: 1300 753 567 or via Customer Help at target.com.au/help/contact-us

Made in China