

A4双面2025.4.1

anko

Instruction manual
K: 43-542-109 | T: 70-961-683

Model No.: 201080

SOLAR FLOOD LIGHT

IMPORTANT SAFETY INSTRUCTIONS

The following safety precautions should always be followed, to reduce the risk of electric shock, personal injury or fire. It is important to read all of these instructions carefully before using the product, and to save them for future reference or new users.

Warning:

1. The light is designed for use OUTDOORS ONLY.
2. Remove all packaging before use.
3. This product is not a toy, keep out of reach of children and pets.
4. This product has small parts, which may pose a choking hazard if detached.
5. Keep away from fire and sources of heat.
6. Do not allow water to come into contact with the batteries or wiring.
7. Some condensate may form inside the unit or solar panel in cold conditions. This is normal and can be ignored.

Battery Replacement

The battery is non-replaceable. DO NOT attempt to replace it.

Light Changing

The light is constructed with non-replaceable LED. DO NOT attempt to replace any of the LED in the light.

Siting Instructions

1. This light is designed for use OUTDOORS in an open (unshaded) location.
2. Do not position or place near barbecues, heaters or any other direct sources of heat.
3. The solar panel should be located where sunlight can fall directly on the panel. Shadows from buildings, trees, walls/hedges and similar objects should be avoided if possible as these will reduce performance.
4. Try to avoid locations where light from other sources (e.g. streetlights, floodlights etc.) may affect the PIR sensor. The light is designed only to illuminate in dark conditions and may not come operate if light reflects on the panel.
5. The light can be left outside in rain but should not be exposed to water jets or immersed. For optimum life, the solar panel should be stored indoors during extreme weather conditions (prolonged snow and frost).

6. The solar light consists of a solar panel, a rechargeable battery and LED lights. All these are pre-assembled. During the daytime, light from the sun charges up the batteries. At night, the energy stored in the batteries is used to power the light. No other power or connections are required. The length of time the light stays on is dependent on how much sunlight has been received during the day.

Production Specification

Solar Panel: 5.5 V 250 mA
Recharge battery: 3.7V 1200 mAh (non-replaceable)
Remote control: 2 x 1.5 V AAA batteries (not included)

Accessories Quantities:

Light x 1, Remote control x 1, Screw pack (with plug) x 2, Mounting plate x 1

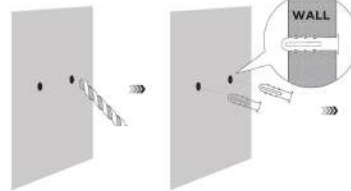
Battery charge instruction

- Turn off the switch when the product is no longer use.
- Charge battery for at least 8 hours before first use.
- The solar light panel MUST be placed in a well-lit location for maximum sunlight.
- Press the button switch to selected mode.
- The solar light requires dark conditions to operate.
- This solar powered light set is for outdoor use. Direct sunlight is required to charge the battery.
- For decoration only. This is not a toy.

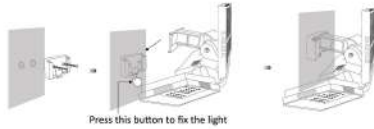
Operating manual

WARNING: ENSURE SECURE ATTACHMENT TO WALL. CONSULT A DIY EXPERT IF REQUIRED.

1. Mount the light by screw. Find a desired location (suggest 1.5-2.5 M height) and line up the mounting plate with wall. Mark the holes by a pencil. Create holes by using a drill bit (if mounting on drywall, use the plastic anchors included). Before screw the mounting in, use a hammer to tap the plastic anchors into marked holes.



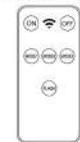
2. Screw the mounting plate to the wall, then light can be slid onto or off by pressing the button on the mounting plate easily.



Press this button to fix the light

3. Below two options to control the light mode.

Option 1: Use remote control.



ON/OFF: light on/light off (When light is in "off" state, press on/mode 1/mode 2/mode 3/FLASH all can light up.)

MODE 1: 100% brightness of lamp, sensor turn off after 15-25S

MODE 2: 50% brightness of lamp, sensor change to 10% brightness after 15-25S

MODE 3: 20% brightness of lamp

FLASH: flashing

Option 2: Press the button on the back of the light will have same function as remote control.

MODE 1/MODE 2/MODE 3/FLASH/OFF

Noted: When in sensor mode, please do not walk in a straight line toward the sensor light, it may affect the sensor detection. Light will be on in dark environment.

Battery Installation (For Remote Control):

This item requires 2 x 1.5 V AAA batteries (Not included).
Battery installation by an adult is required.

BATTERY WARNING:

- Batteries are to be inserted with correct polarity.
- Do not mix different types of batteries or new and used batteries.
- Non-rechargeable batteries are not to be recharged.
- Rechargeable batteries are only to be charged under adult supervision.
- Rechargeable batteries are to be removed from the product before being charged.
- The supply terminals are not to be short-circuited.
- Remove batteries from the product when not in use for extended time or when batteries become exhausted.
- Dispose of batteries responsibly.
- Do not dispose of in fire.

Troubleshooting

| Problems | Possible Reasons | Solution |
|-----------------------------|---|--|
| No electricity, No working. | Solar light run out of battery. | Before you use it, please place the solar lights in a sunny area for 2-3 days to charge, and make sure the solar panel is facing the sun to work properly. |
| | Do not put into dark environment to light on. | The solar need to work in dark environment to use. |
| | Remote control do not insert battery. | Need to insert 2 x AAA battery before use. |
| Battery charge problem | The solar panels are blocked. | Solar panel need to facing the sun without any cover around. |
| Little operation time | Charging time not enough. | Need to sun power at least 8 hours to full charge. |
| Sensor problem | The sensor button is blocked. | There should be no cover in front of the sensor light. |
| | The environment temperature is too high. | Suggest to use the sensor light with the environment temperature under 30°C. |

12 Month Warranty

Thank you for your purchase.

Your new product is warranted to be free from defects in materials and workmanship for the period stated above, from the date of purchase, provided that the product is used in accordance with accompanying recommendations or instructions where provided. This warranty is in addition to your rights under the Australian Consumer Law.

For New Zealand customers, this warranty is in addition to statutory rights observed under New Zealand legislation.

We will provide you with your choice of a refund, repair (where possible) or exchange (availability dependent) for this product if it becomes defective within the warranty period.

The business will bear the reasonable expense of claiming the warranty.

This warranty will no longer apply where the defect is a result of alteration, accident, misuse, abuse or neglect.

Please retain your receipt as proof of purchase and contact our Customer Service Centre as listed below, for the entity you purchased this product from, for any difficulties with your product. Warranty claims and claims for expense incurred in returning this product can be addressed to the respective Customer Service Centre.

Our goods come with guarantees that cannot be excluded under the Australian Consumer Law. You are entitled to a replacement or refund for a major failure and compensation for any other reasonably foreseeable loss or damage. You are also entitled to have the goods repaired or replaced if the goods fail to be of acceptable quality and the failure does not amount to a major failure.

| Contact for Kmart purchases | Contact for Target purchases |
|--|---|
| Kmart Australia Ltd. C/-Customer Service Centre 690 Springvale Road, Mildura Vic 3170 Customer Service: 1800 124 125 (Australia) or 0800 945 995 (New Zealand) or via Customer Help at kmart.com.au | Target Australia Pty Ltd C/-Customer Service Centre 2 Kendall Street, Williams Landing, Vic 3170 Customer Service: 1300 753 567 Or via Customer Help at target.com.au/help/contact-us |