

# 105mm

# 145mm

## anko

### 2.4G Wireless Mouse Wave

Instruction manual

K: 43499779 | T: 70363623

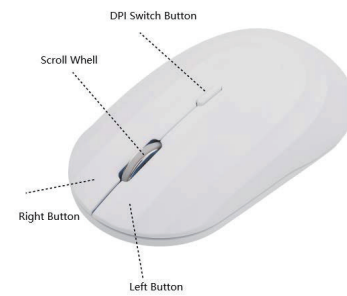
(Model: JLR-79802)



**Packing list:** Mouse\*1, Manual\*1

Please read all the information carefully before you use the product and keep the manual for future reference.

#### Product Diagram:

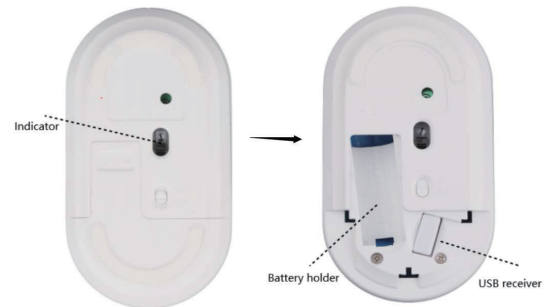


#### Product feature:

2.4G wireless technology  
DPI: 1000 dpi/1200 dpi/1600dpi  
Working distance: 8-10M (no obstacles)  
Battery: 1.5V, 1\*AA (not included)  
Compatible with Windows 2000/XP/Vista/7/8/10/11/Mac OS/Chrome OS

#### How to Connect and Use:

1. Take out the USB receiver, and correctly insert it into the device which supports the use of USB,
2. Turn on the switch at the bottom of the mouse. The mouse will automatically create a connection with the receiver. Then you can use the mouse normally.
3. You can turn off the switch if you do not use the mouse.



#### WARNINGS:

Insert batteries with the correct polarity and always follow the manufacturer's instructions.  
Remove batteries if product will be stored for an extended period.  
Dispose of used batteries responsibly

#### Safety instruction:

Please read the instruction manual before using this device and follow all the safety instruction to avoid damage caused by improper use.

- › Keep the instruction manual for future reference. Should this device be given to a third party, then this instruction manual must also be handed over.
- › Use this device solely for its intended purpose.
- › Only use this appliance indoors.
- › Keep the appliance away from all hot surfaces and naked flames.
- › Always put the appliance on a level, stable, clean, dry surface. Protect the appliance from extreme heat and cold, dust, direct sunlight, humidity and drops or jets of water.
- › Do not immerse the appliance in water or in other liquids.
- › Do not open the housing under any circumstances.
- › Do not introduce any objects into the interior of the housing.
- › Should the device malfunction due to electrostatic discharge or a short power surge, disconnect it from your computer and then reconnect it again.

#### 12 Month Warranty

Thank you for your purchase.

Your new product is warranted to be free from defects in materials and workmanship for the period stated above, from the date of purchase, provided that the product is used in accordance with accompanying recommendations or instructions where provided. This warranty is in addition to your rights under the Australian Consumer Law. For New Zealand customers, this warranty is in addition to statutory rights observed under New Zealand legislation.

We will provide you with your choice of a refund, repair (where possible) or exchange (availability dependent) for this product if it becomes defective within the warranty period. The business will bear the reasonable expense of claiming the warranty. This warranty will no longer apply where the defect is a result of alteration, accident, misuse, abuse or neglect.

Please retain your receipt as proof of purchase and contact our Customer Service Centre as listed below, for the entity you purchased this product from, for any difficulties with your product. Warranty claims and claims for expense incurred in returning this product can be addressed to the respective Customer Service Centre.

Our goods come with guarantees that cannot be excluded under the Australian Consumer Law. You are entitled to a replacement or refund for a major failure and compensation for any other reasonably foreseeable loss or damage. You are also entitled to have the goods repaired or replaced if the goods fail to be of acceptable quality and the failure does not amount to a major failure.

Contact for Kmart purchases	Contact for Target purchases
Kmart Australia Ltd. C/- Customer Service Centre 690 Springvale Road, Mulgrave Vic 3170 Customer Service: 1800 124 125 (Australia) or 0800 945 995 (New Zealand) or via Customer Help at kmart.com.au	Target Australia Pty Ltd C/- Customer Service Centre 2 Kendall Street, Williams Landing, Vic, 3027 Customer Service: 1300 753 567 or via Customer Help at target.com.au/help/contact-us