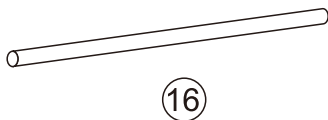
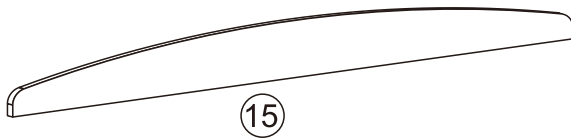
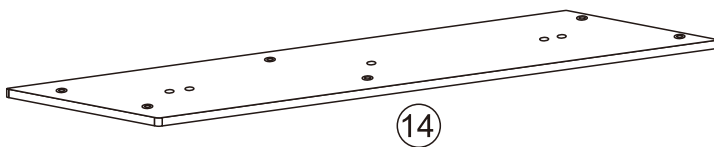
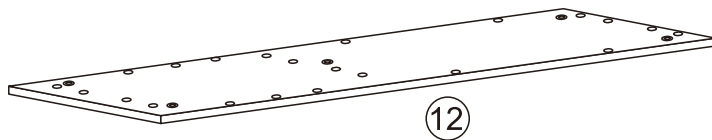
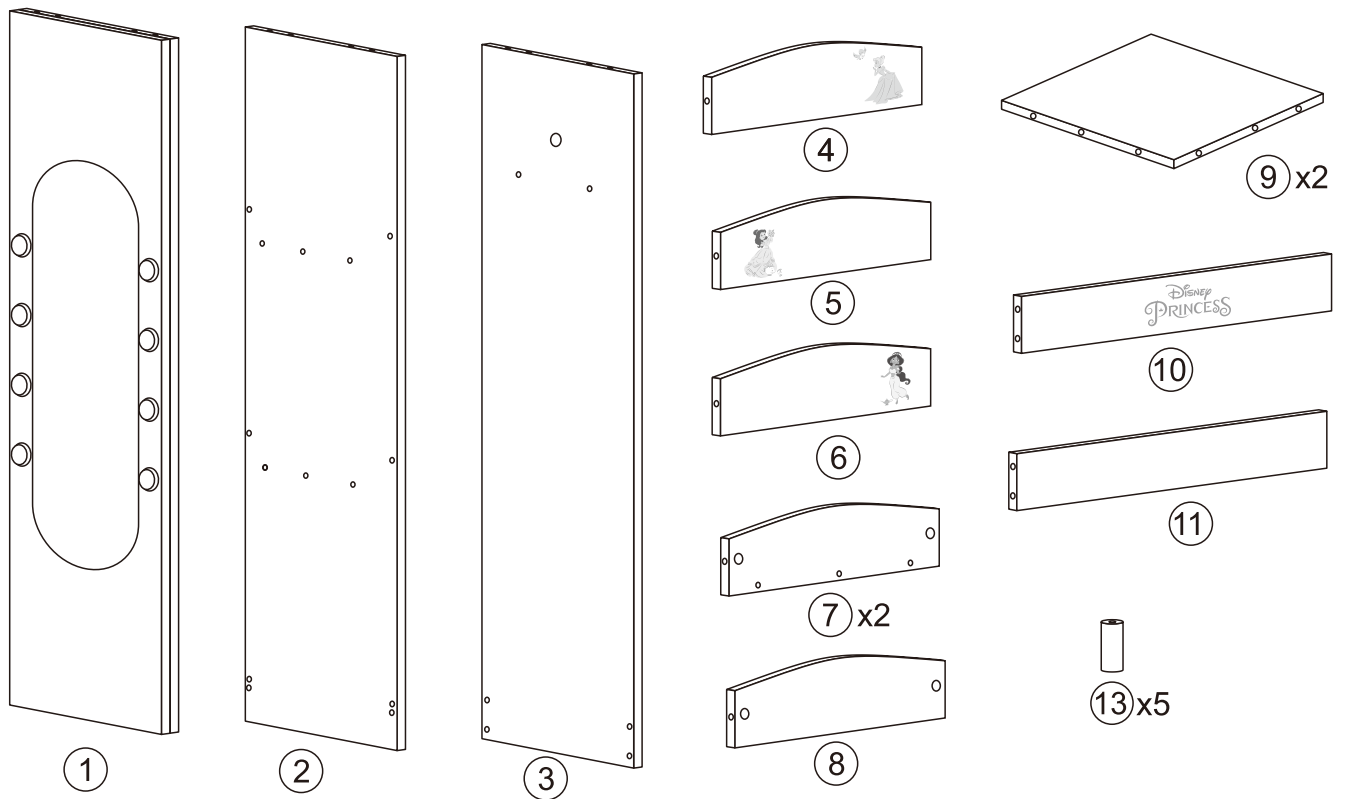
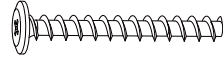

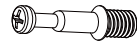

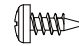
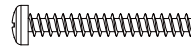





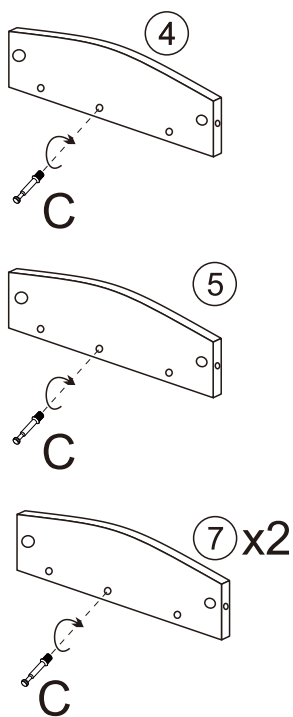
Assembly Instructions



	Ax30
	Bx38
	Cx20
	Dx20
	Ex1
	Fx3
	Gx1
	Hx1
	Ix1

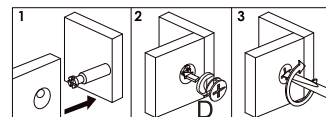
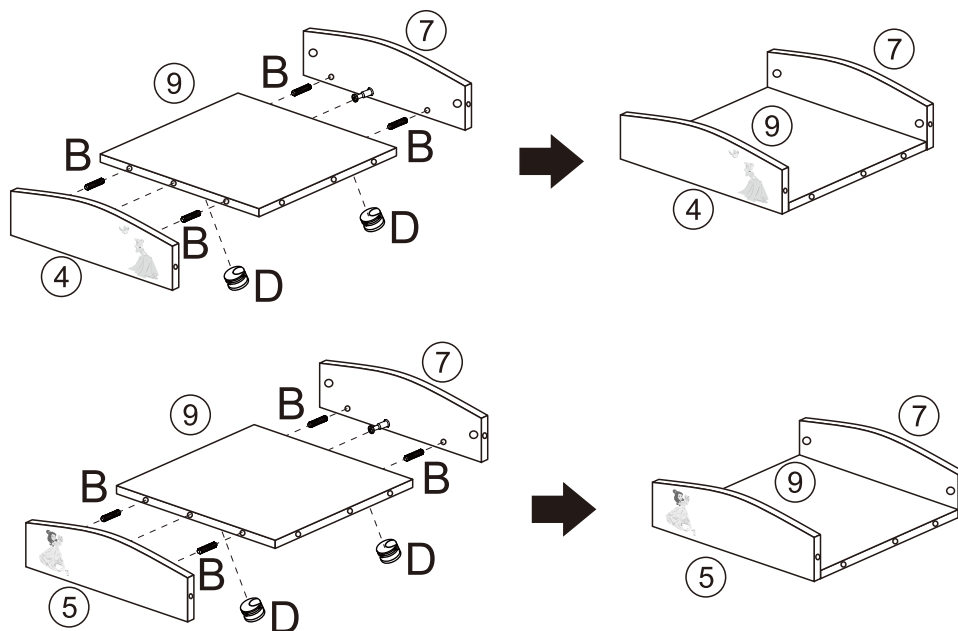
Assembly Instructions

1

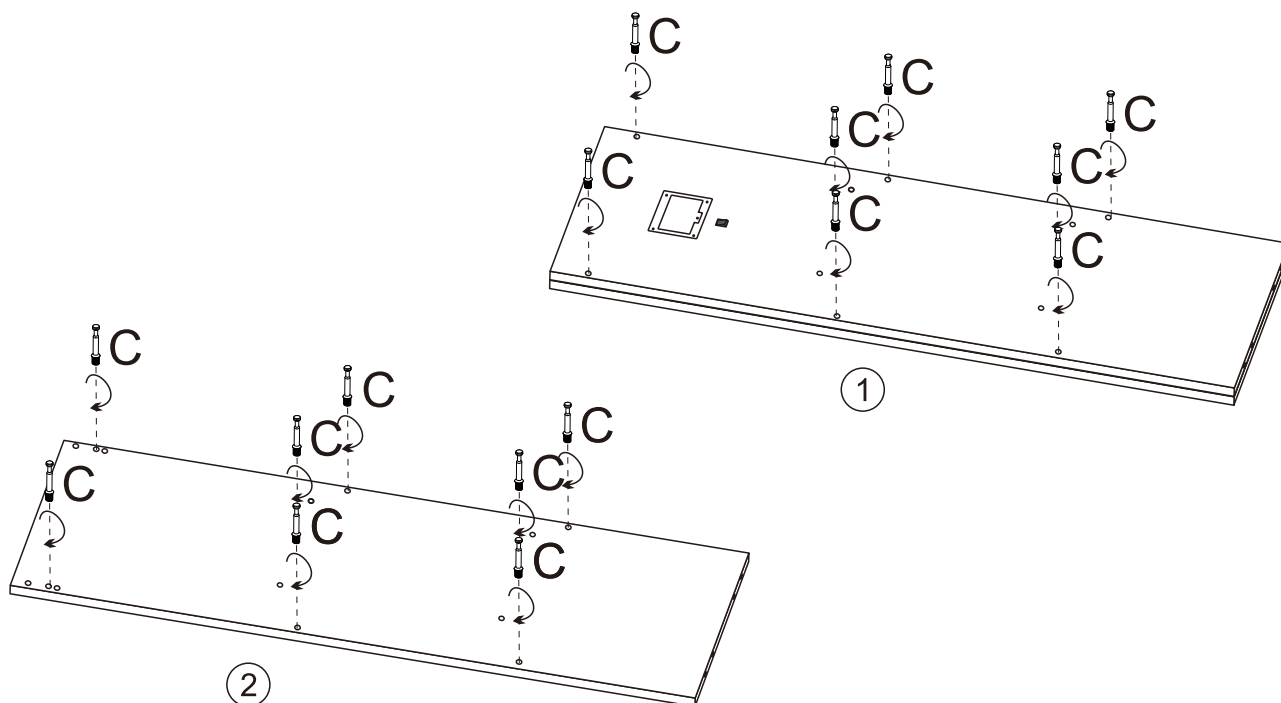


2

Parts no. 4, 5 & 7 should be assembled to the side of part no. 9 of which the side length is exactly same as these parts.

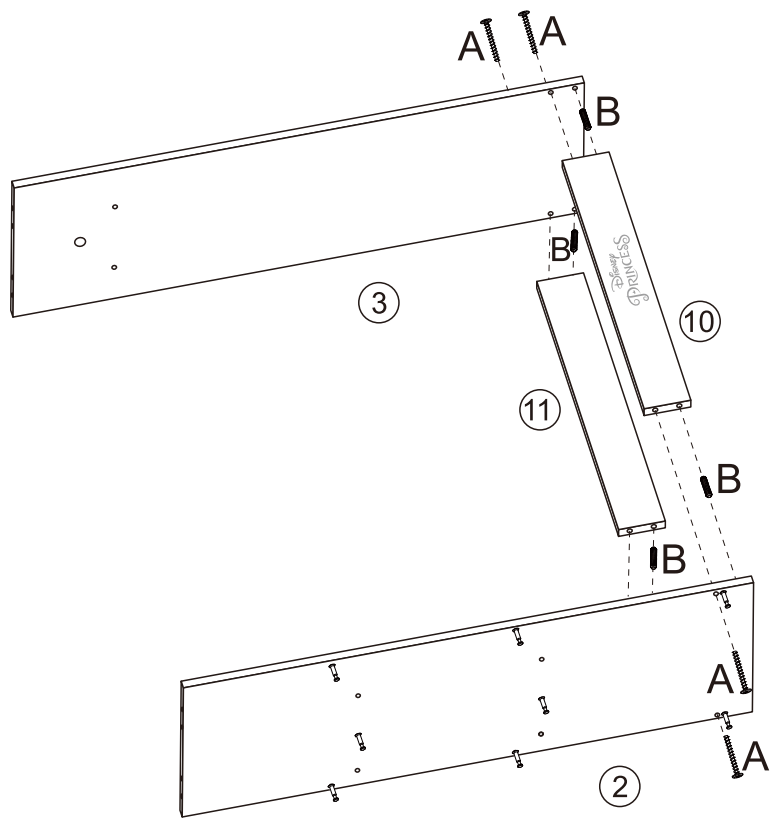


3

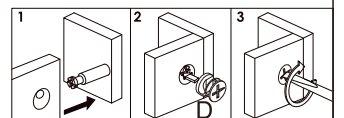
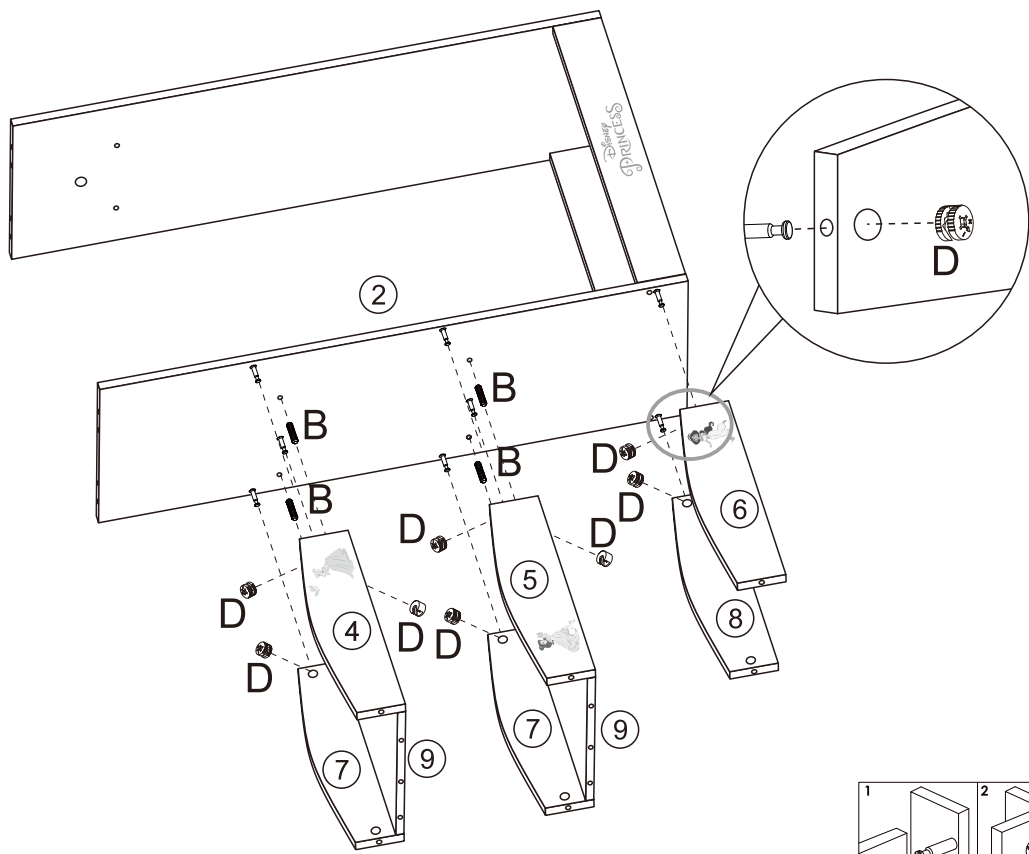


Assembly Instructions

4

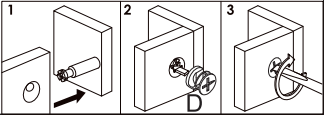
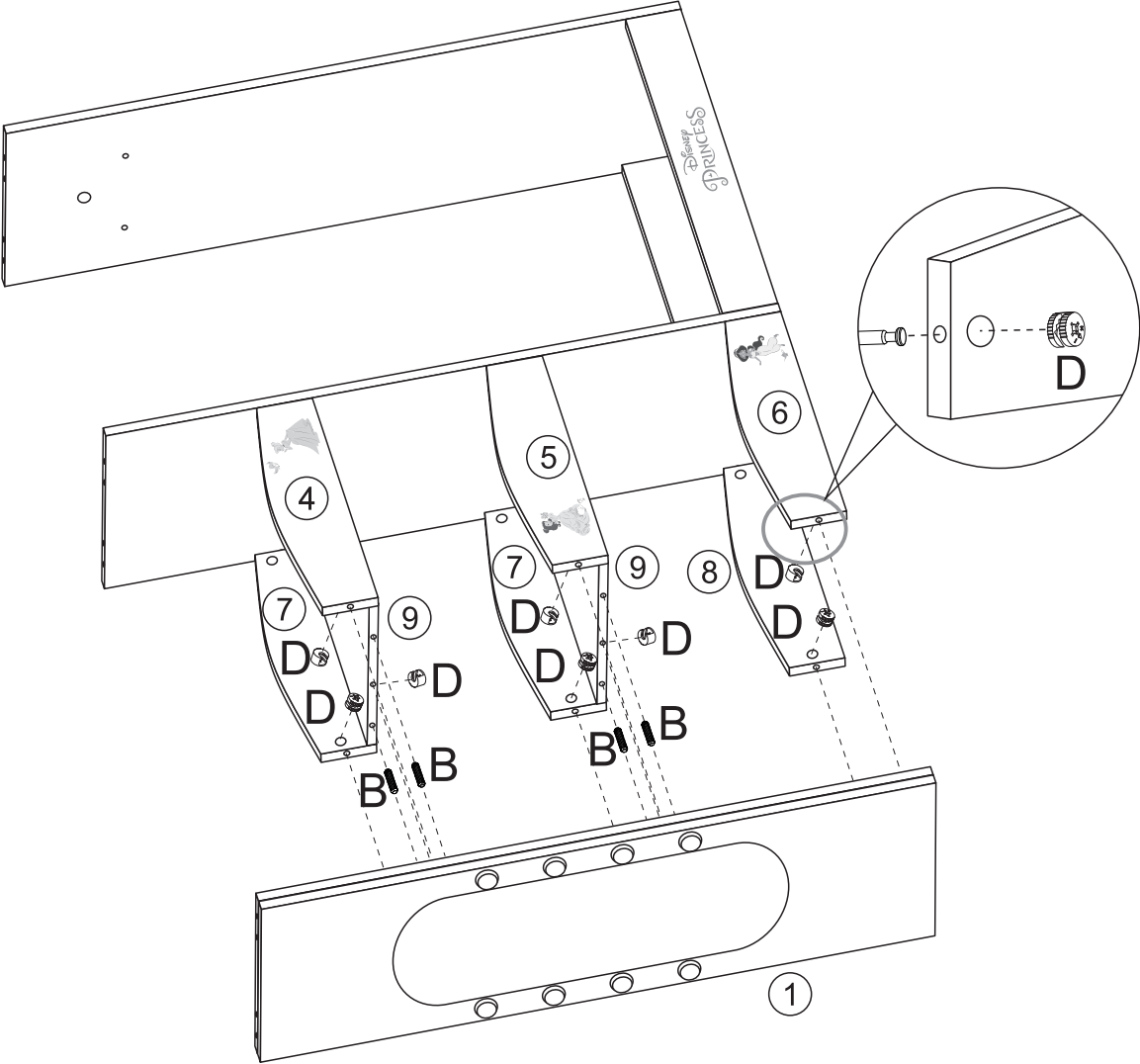


5



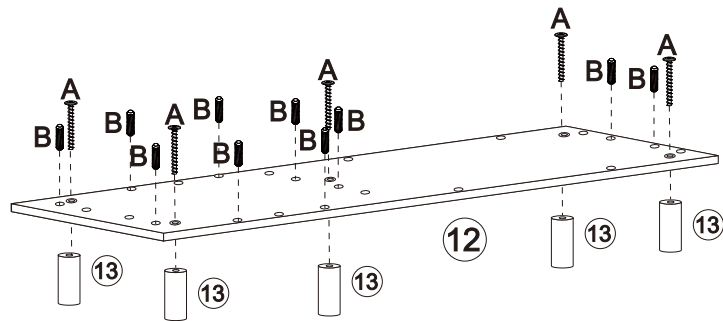
Assembly Instructions

6

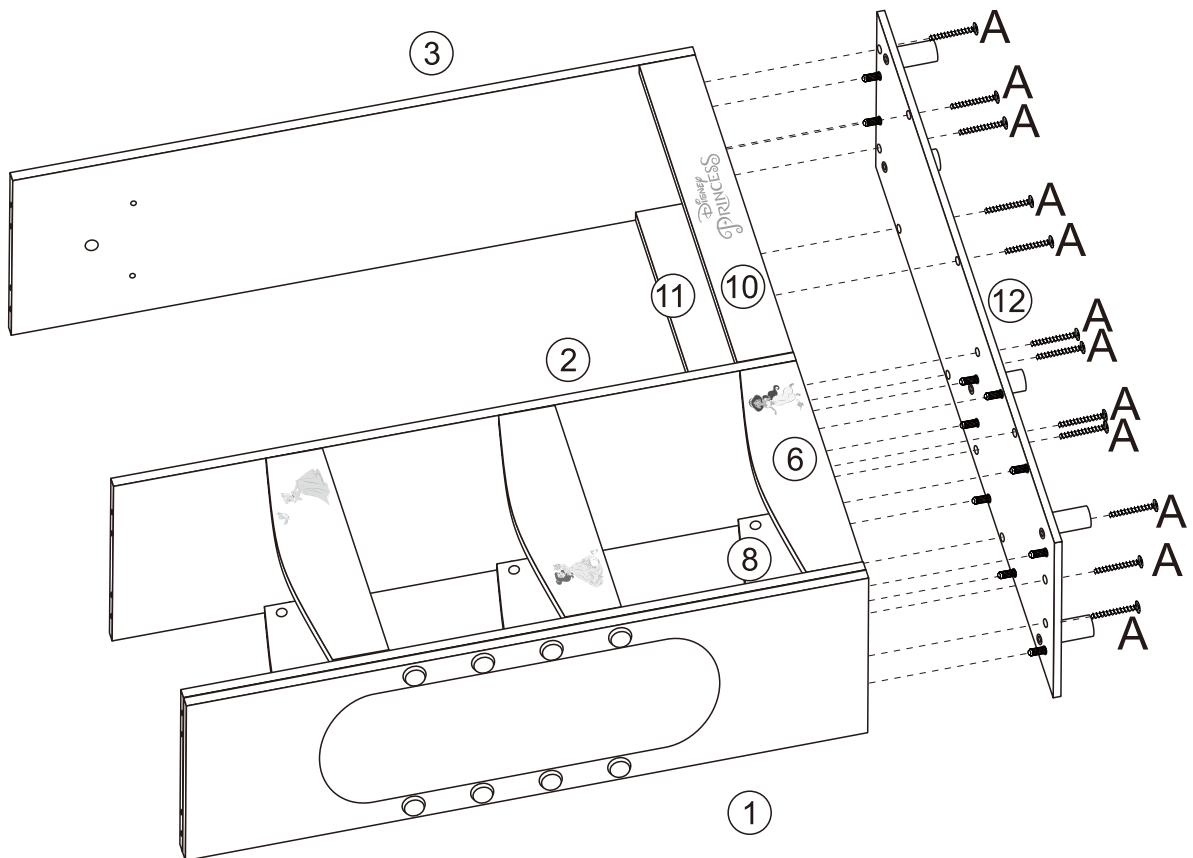


Assembly Instructions

7

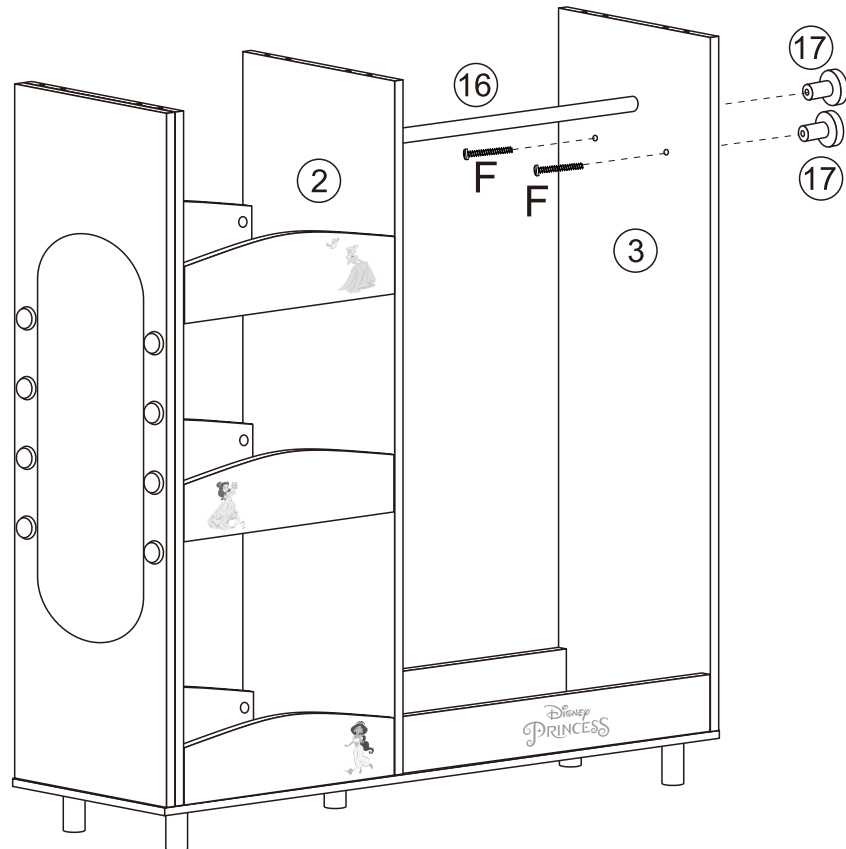


8

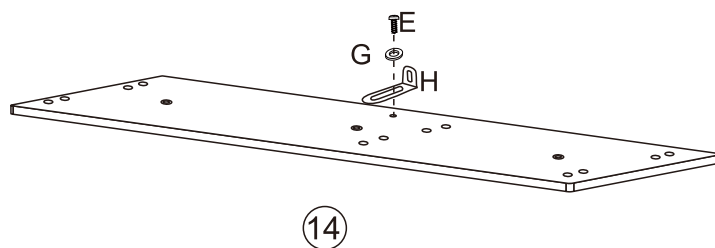


Assembly Instructions

9

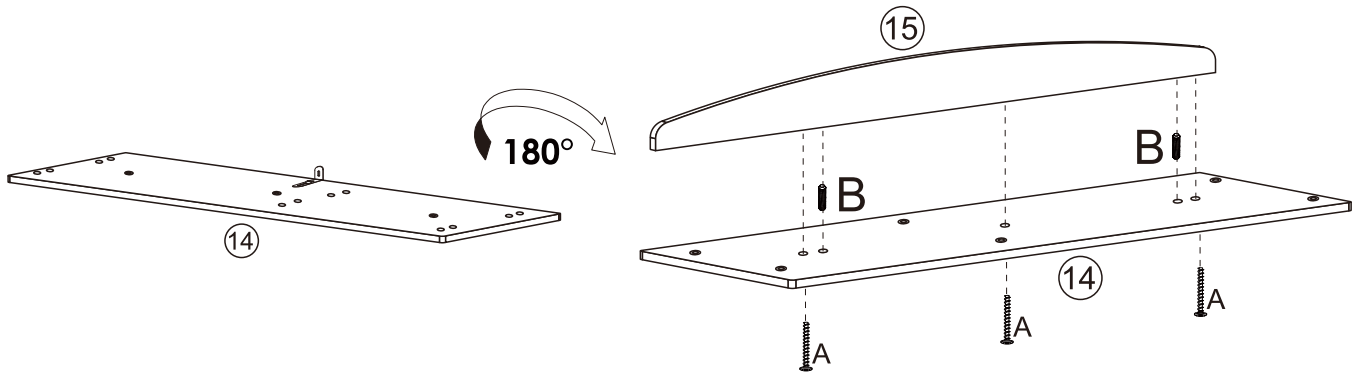


10

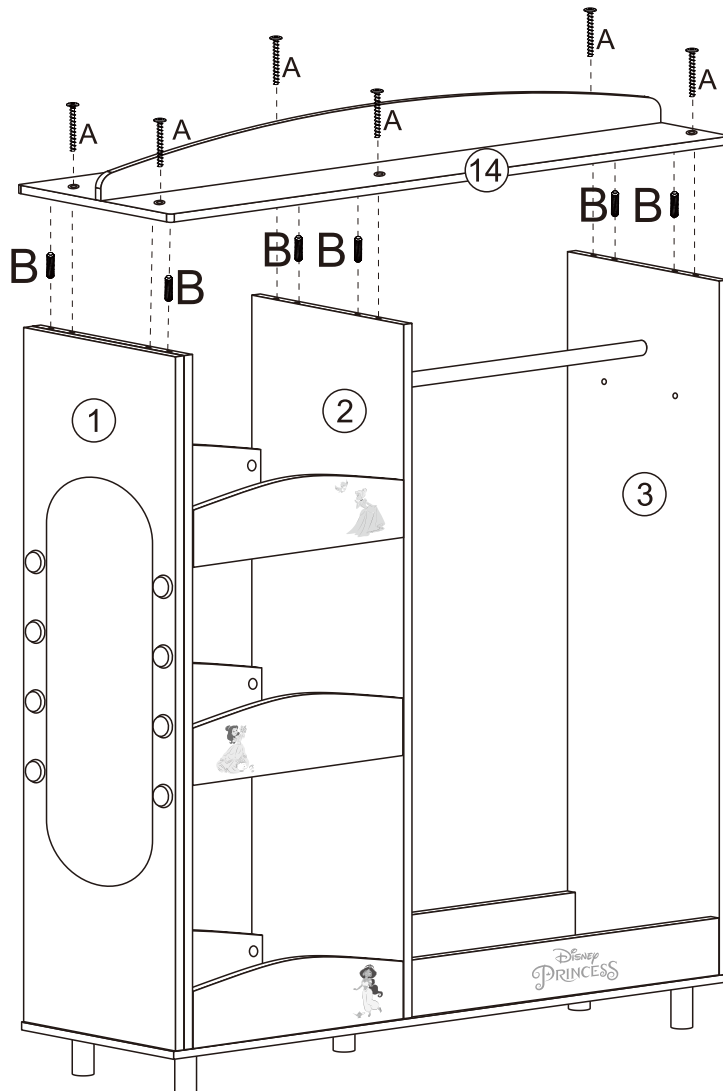


Assembly Instructions

11



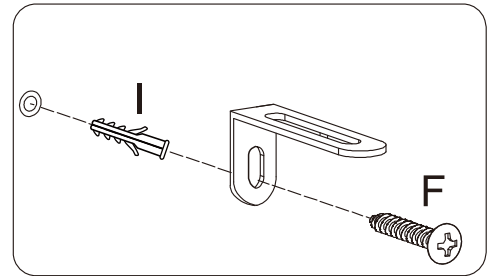
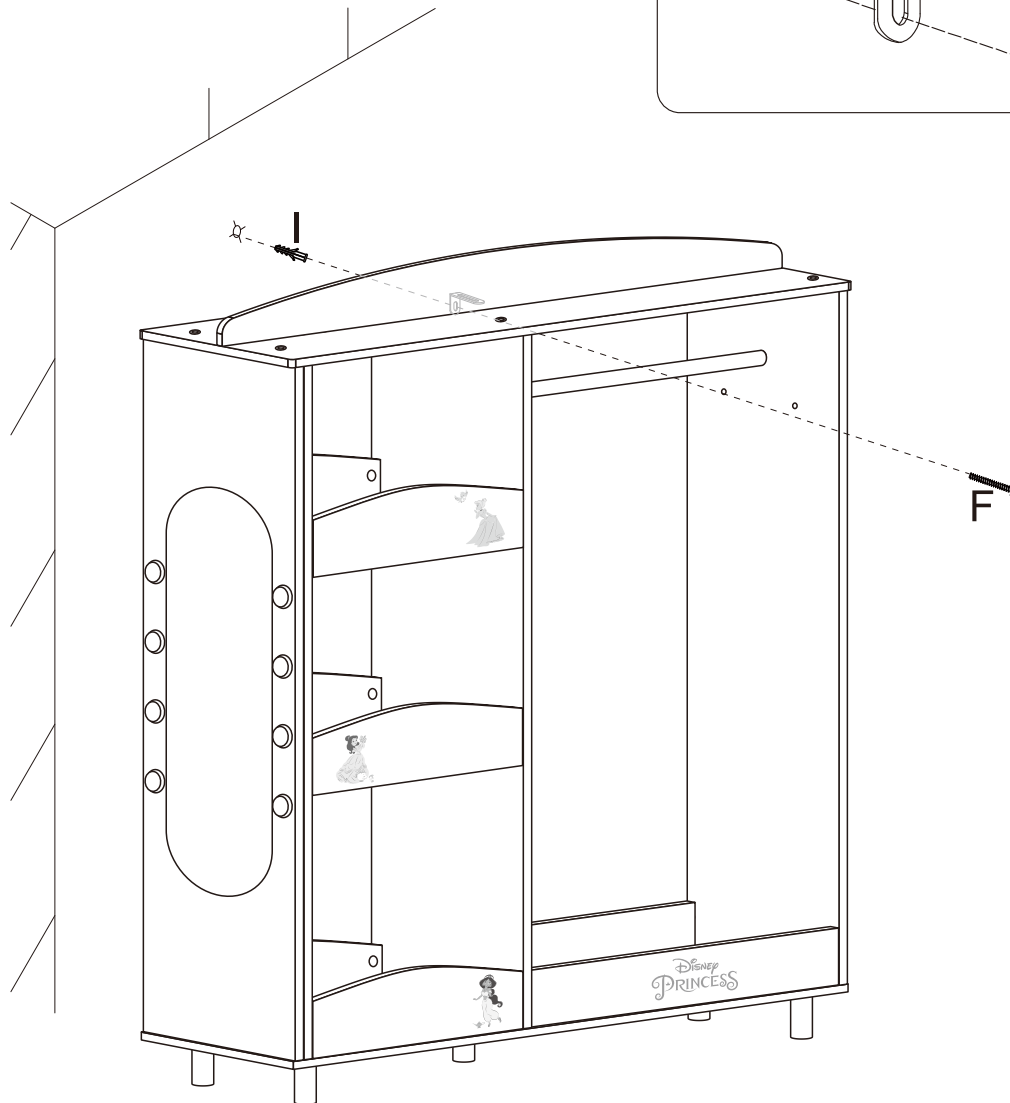
12



Assembly Instructions

13

Drill a hole on the wall and then secure the product to the wall with the anchor fixings.



1 Open the battery cover with a cross head screw-driver (not included).

2 Insert batteries in battery compartment with the correct polarity.

Requires 3 x 1.5V AA size batteries (not included).

⚠ CAUTION:

ADULT ASSEMBLY IS REQUIRED. HARDWARE CONTAINS SCREWS WITH SHARP POINTS. KEEP UNASSEMBLED PARTS OUT OF THE REACH OF SMALL CHILDREN.

WARNING: THE INSTRUCTION MANUAL MUST BE KEPT SINCE IT CONTAINS IMPORTANT INFORMATION.

CAUTION: PLEASE CHECK CONDITION OF PRODUCT REGULARLY, AS SCREWS MAY LOOSEN WITH USE OVER TIME. TIGHTEN SCREW FITTINGS IF NECESSARY. DISCONTINUE USE OF THE ITEM IF EXCESSIVE WEAR AND TEAR IS FOUND.

⚠ WARNING

CHOKING HAZARD-SMALL PARTS.
NOT SUITABLE FOR CHILDREN UNDER 3 YEARS.

WARNING: PLEASE SECURE THIS PRODUCT WITH THE SUPPLIED WALL FIXING. IT IS STRONGLY RECOMMENDED THAT THIS PRODUCT IS PERMANENTLY FIXED TO THE WALL. PLEASE SEEK PROFESSIONAL ADVICE IF YOU ARE IN DOUBT OF WHAT FIXING DEVICE TO USE. REGULARLY CHECK THE ANCHOR IS SECURELY MAINTAINED.

CAUTION: FOR YOUR SAFETY WHEN ATTACHING THE ANCHOR FIXINGS, PLEASE CHECK ANY ELECTRICAL WIRES OR PLUMBING INSIDE THE WALL BEFORE DRILLING ANY HOLES.

WARNING: BATTERIES ARE TO BE INSERTED WITH THE CORRECT POLARITY (+ and -). DO NOT MIX DIFFERENT TYPES OF BATTERIES OR NEW AND USED BATTERIES. NON-RECHARGEABLE BATTERIES ARE NOT TO BE RECHARGED. RECHARGEABLE BATTERIES SHOULD BE CHARGED UNDER ADULT SUPERVISION. RECHARGEABLE BATTERIES ARE TO BE REMOVED FROM THE TOY BEFORE BEING CHARGED. THE SUPPLY TERMINALS ARE NOT TO BE SHORT-CIRCUITED. REMOVE BATTERIES FROM THE TOY WHEN NOT IN USE FOR EXTENDED TIME OR WHEN BATTERIES BECOME EXHAUSTED. BATTERY INSTALLATION BY AN ADULT IS REQUIRED. DISPOSE OF BATTERIES RESPONSIBLY. DO NOT DISPOSE OF IN FIRE.