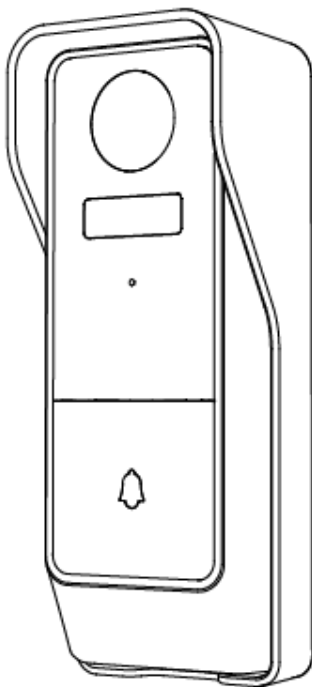


Quick Start Guide

I005503 3MP Wi-Fi Doorbell Camera

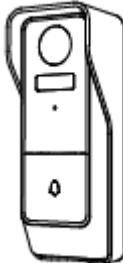

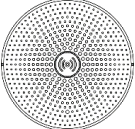




Model: Bell 19S

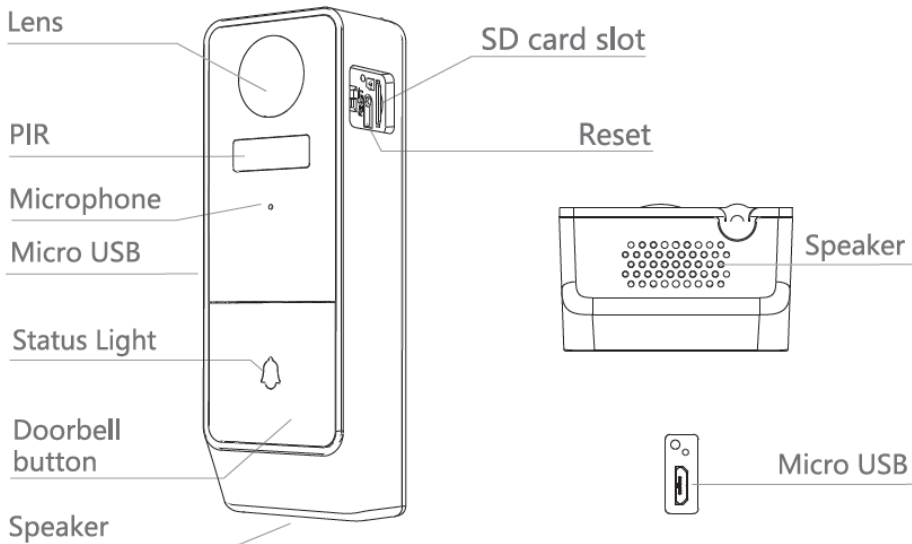
v1.0 30/10/2023

Welcome, Thank you for choosing our smart camera, getting started is easy

What's included

				
Bell 19S	USB charging cable	USB chime	Screw driver	Wall mount screw sets

Product Details



Connection Preparation

It is important that your phone is connected to the 2.4Ghz Wi-Fi and not to the 5GHz network.

To verify your mobile device is set to a 2.4Ghz Wi-Fi network, navigate to the **Settings** menu and click on **Wi-Fi**. In this menu you will see all the detectable networks in your area. Locate the SSID (the name of your network) and ensure that the Wi-Fi SSID does not end with a 5G / 5GHz.



Check that you have a strong Wi-Fi signal (at least two bars) in the location where the smart camera is to be installed. 

If you don't have at least two bars signal on your phone, then you may need to reconsider relocating the camera to a different location or obtain a Wi-Fi extender to boost the Wi-Fi signal strength.

1. Install the APP and register Account

Download the "Mirabella Genio" APP to your smartphone from the App Store or Google Play.

Insert the Micro SD card (not included) (Please note that the camera will work without an SD card, but it will not be able to record any footage.)

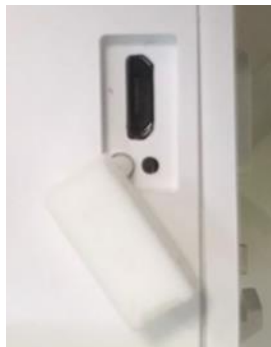
Take off the rubber cap to reveal the SD card slot. Carefully insert the Micro SD card into the slot, paying close attention to its orientation. Avoid applying excessive force during insertion. Once the card is in place, reattach the rubber cap.

Make sure to use a Micro SD card with a capacity greater than 8GB, but not exceeding 128GB. It must be formatted in FAT32; the camera does not support the NTFS system.



We recommend use Scandisk, Verbatim, Kingston , Samsung Class 10 high speed micro SD for best performance.

To recharge the battery, first remove the plastic cover on the side to reveal the charging port. Next, insert the provided USB cable and a standard phone charger with a 5V 1A output (not included) to charge the battery.

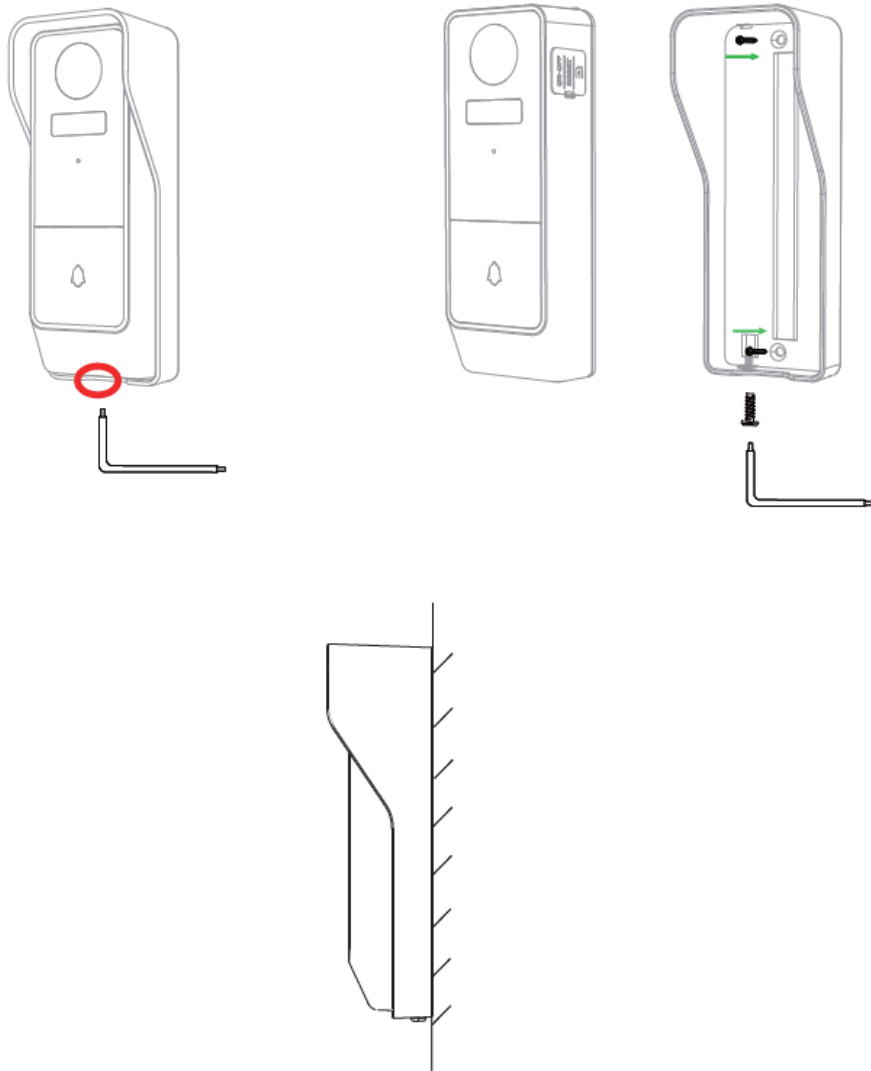


2. Doorbell Camera Installation

Unlock the mounting screw at camera bottom with screwdriver

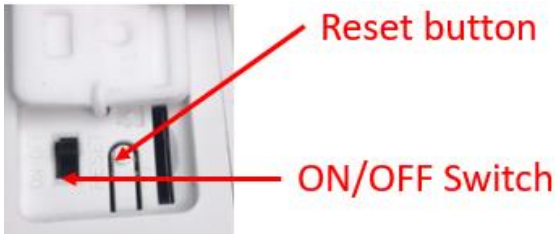
Fix the bracket to the wall with mounting screws

Install the camera in the bracket and lock it with bracket screw



3. Pairing the camera using Mirabella Genio App

1. Remove the plastic cover on side to expose the ON/OFF switch, slide the switch to ON.

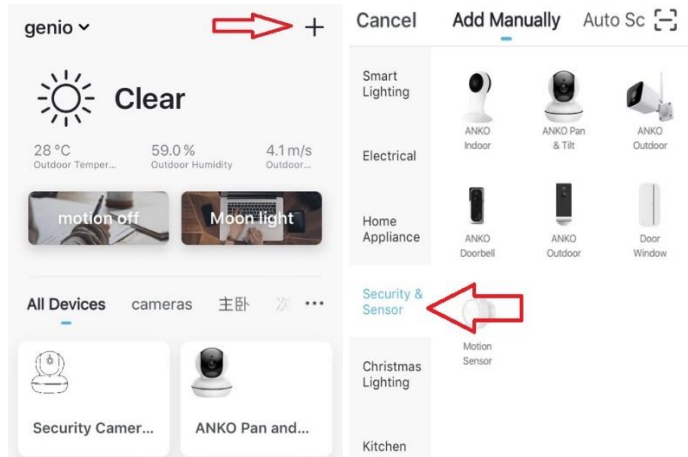


2. Press and hold the reset button, until you hear the “bugu” reset sound, the status light will start to blink red, (1 blink per seconds), the doorbell is ready to pair with the genio APP

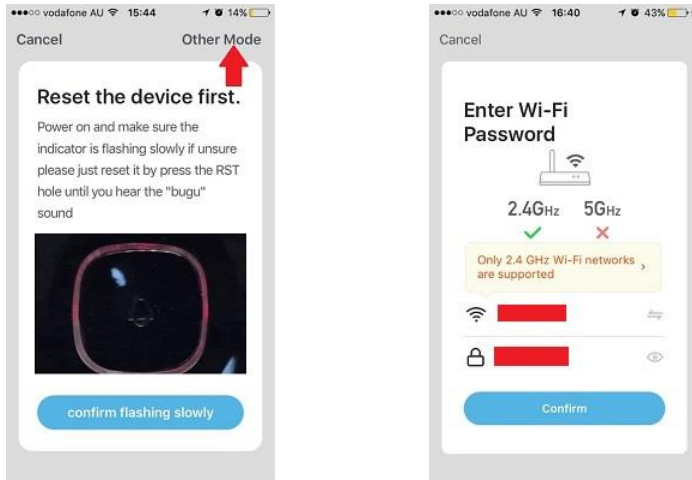
If you unsure about the status light speed is correct or not, simply reset it, then doorbell will be in the pairing mode for sure.

3. Please ensure your mobile phone is connected to your 2.4Ghz Wi-Fi network (DO NOT use Wi-Fi name ending with -5G)
4. Open the Mirabella Genio APP, tap on +, then choose **Security & Sensor**

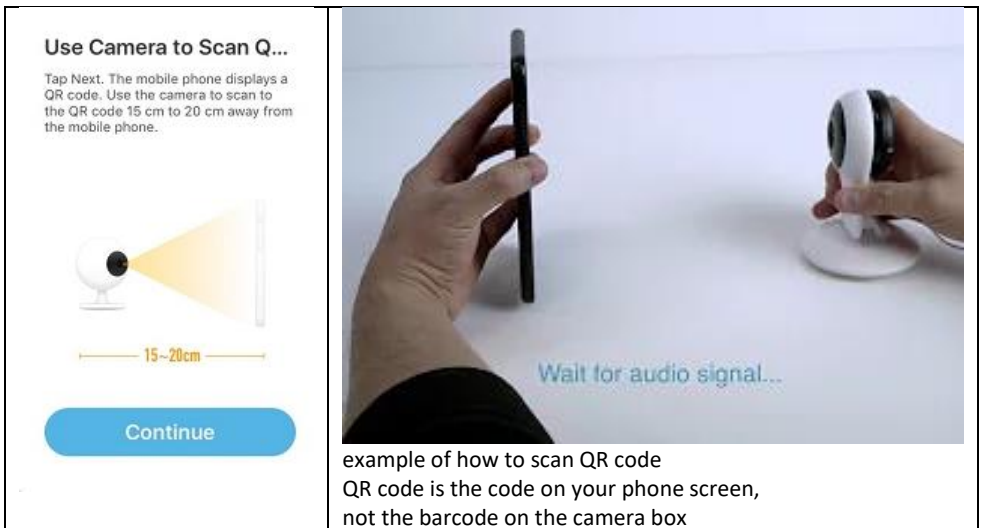
Select your **doorbell camera** from the list of smart camera icon



5. Double check and ensure that the LED indicator light is still red and blinking , tap **confirm red indicator blinking** and enter your 2.4GHz Wi-Fi name and password (not your genio password)



6. Tap **continue** and the QR code will appear, place this QR code in front of the camera at approximate 15-20cm, until your hear a sound, the indicator light will now change from blinking red to blinking **blue** **If the doorbell unable to scan the QR code, then doorbell is not in the pairing model, please reset it**



example of how to scan QR code
QR code is the code on your phone screen,
not the barcode on the camera box

7. Please wait for indicator light to switch to solid blue, then tap the **beeped/indicator switch** button
8. Camera is now successfully added into your APP. Please refer to the FAQ section for troubleshooting if this method does not connect.

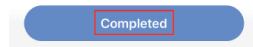
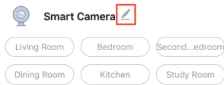
Connecting

Make sure your router, mobile, and device are as close as possible



- ✓ Device found
- ✓ Register device to the smart cloud
- ✓ Initializing device

Device added successfully



Q. LED indicator is not blinking red as per APP screen

A. Power off the camera, wait for 20 seconds, then power on. Depress the reset button until you hear the reset sound, then indicator light starts to blink red (1 blink every seconds).

Q. Camera doesn't scan the QR code

A. Please ensure camera is in the pairing mode, indicator light is blinking red , if you are unsure, please reset it , also check your screen brightness setting , make sure the phone is not in the dark mode

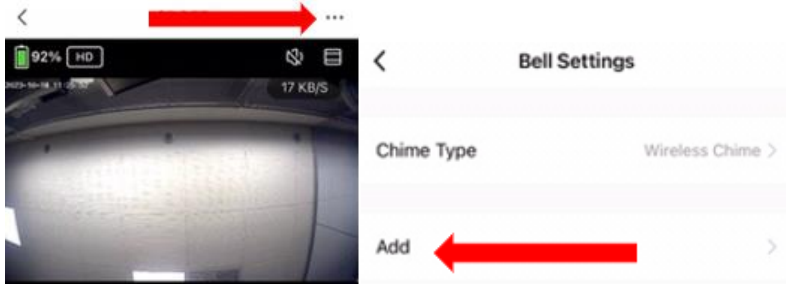
Q. After scanning the QR code, indicator light doesn't turn into solid blue

A. This is an indication of communication error with router, please ensure you are using the correct 2.4Ghz Wi-Fi name and password, and please manually disabled the 5GHz Wi-Fi signal on the router setting

4. Pairing the Wireless Chime

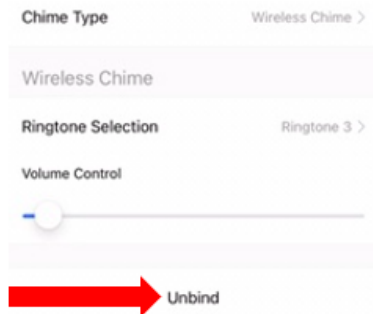
1. Insert the chime into any standard USB outlet or adaptor (not included), the chime needs to be in 5 metres range of the doorbell

2. Open the Mirabella genio APP, tap on doorbell -> **setting**-> **bell setting** > Chime Type , select **Wireless Chime**

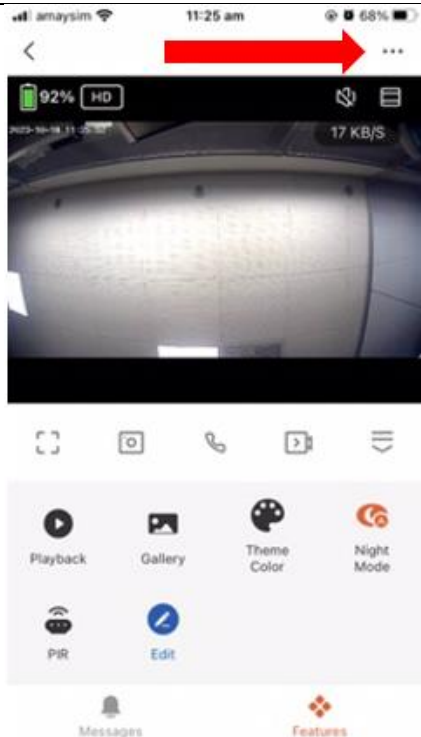


3. Press the reset button located on the rear side of the chime and ensure that the blue indicator light is **blinking continuously**. Then, proceed to press the "add" button on the app in order to link the chime. If you press the "add" button after the chime's indicator light has ceased blinking, it will not function, and you will need to reset the chime and attempt the process once more.

4. The chime's indicator light will cease blinking as soon as you press "add," indicating a successful pairing. You can verify this by testing it with the doorbell button. If the chime's indicator light does not stop blinking or if there is no ringtone, please select "unbind" on the app and then repeat steps 3 to 4. The critical aspect for a successful chime pairing is to ensure that the blue indicator light on the chime is blinking when you press the "add" button on the app.



Camera interface is subject to slight alterations based on firmware updates
Tap on the ... icon you can access the camera's Settings page



Device Name:

You can customize the camera name here

Share Device, If you wish to share or remove this camera with other genio APP user

Basic Function Settings: Please ensure Talk Mode is set as Two Way Talk,

IR Night Vision: please set it as Auto

Detection Alarm Settings: human body filtering please ensure it is on

PIR set: this is motion detection sensitivity setting

Memory Card Settings: This will only appear when 8GB-128GB Micro SD card is inserted

Remove Device: Remove the device from current account so you can re-pair it again or pair under different account

FAQ:

How to connect camera to another router/genio account?

Go to the camera's settings page, look for "remove device" Remove it and reset the camera and pair it again through the APP.

Poor performance, takes a long time to load the live footage?

Please check the Wi-Fi signal, if it is less than 60%, you will need consider changing the camera location or purchase a Wi-Fi extender to boost the signal.

Camera goes offline and doesn't reconnect back?

Go to the camera's settings page, look for "remove device" Remove it and reset the camera and pair it again through the APP.

Still receive the Cannot find Device error?

Manually disable the 5Ghz Wi-Fi signal on the router setting

Ensure that the 2.4Ghz Wi-Fi signal is on.

Ensure the indicator light is blinking RED not blue

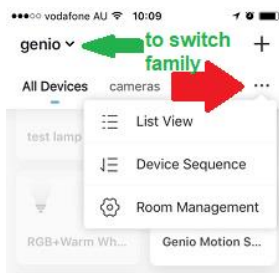
Please check you have entered the correct 2.4Ghz Wi-Fi SSID and password

How to turn on or turn off notifications?

On the Genio APP home screen, Tap on **Me** -> **Settings** -> **Push Notification** -> turn on/off **Enable notifications**

How to change view or arrange device sequences and manage room?

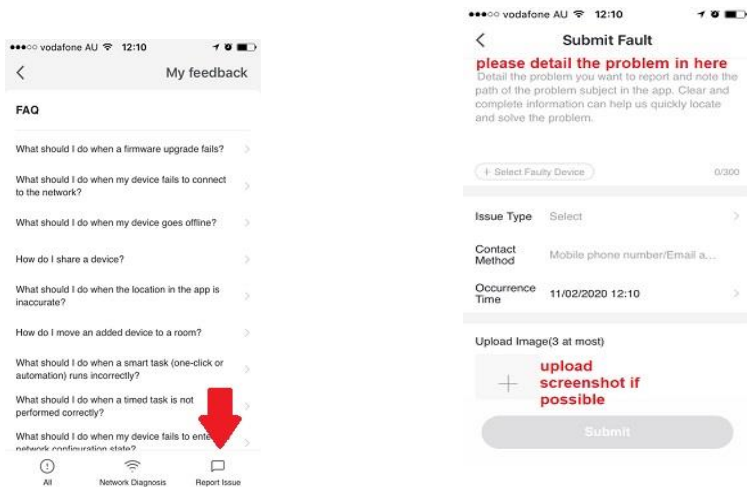
A. In the genio APP home screen, tap on ... on the top right corner, to access these options , tap on family name to switch below rooms



Q. Need more help or further technical assistance from Mirabella engineer?

A. In the genio APP home screen, tap on, Me, -> FAQ & Feedback -> Report issue

Fill the fault information or suggest for the APP/product, then submit



Remember the performance of Wi-Fi camera is relies heavily on the performance of your router, If you are using Telstra NBN or a dual-band router, you must disable the 5GHz Wi-Fi in order to make a successful connection and for best overall performance.



All trademarks are used for reference purposes only. Made in China

MIRABELLA INTERNATIONAL PTY LTD
1 MIRABELLA DRIVE, TULLMARINE, VIC, AUSTRALIA 3043
TOLL FREE: 1800 636 528, www.mirabellagenio.com.au

WARNING: Li-ion battery handling notice

Always read the instruction manual and any warnings on the device before using a lithium-ion battery.

Rechargeable lithium-ion batteries can explode, release flames, and/or cause burns if disassembled, punctured, cut, crushed, short-circuited, incinerated, recharged incorrectly, or exposed to water, fire, or high temperatures.

1. Use the battery charger and AC adapter specified for use with the lithium-ion battery.
2. Do not force the lithium ion battery into a battery charger or device if it does not fit.
3. Do not throw lithium-ion batteries into a fire or heat source also lead to overheating, explosion or fire.
4. Do not connect the positive and negative terminals of the lithium-ion battery with a metal object.
5. Do not throw lithium-ion batteries, drop them from high places, or otherwise subject them to strong impacts
6. Do not put a lithium-ion battery in a microwave oven, pressure container, or other such devices.
7. Do not place combustible materials on top of or over a lithium-ion battery when charging or discharging.
8. Do not disassemble or modify a lithium-ion battery.
9. When the electric device is not being used for an extended period of time, remove the lithium-ion batteries from the device and store them in a dry place.
10. Keep devices that contain batteries and batteries themselves out of reach of children. Mishandling of lithium-ion batteries is dangerous.
11. Lithium-ion batteries have finite life spans. If the batteries require constant recharging, replace them with new ones.
12. If battery leaks or gives off an unusual odour, immediately remove it and place it away from any naked flame.
13. Never dispose of a lithium-ion battery in your regular trash or recycling bin, contact your local council for recycling options