

- › Cleaning Brush



TB-2053

Thank you for your purchase.

Your new product is warranted to be free from defects in materials and workmanship for the period stated above, from the date of purchase, provided that the product is used in accordance with accompanying recommendations or instructions where provided. This warranty is in addition to your rights under the Australian Consumer Law.

For New Zealand customers, this warranty is in addition to statutory rights observed under New Zealand legislation.

We will provide you with your choice of a refund, repair (where possible) or exchange (availability dependent) for this product if it becomes defective within the warranty period. The business will bear the reasonable expense of claiming the warranty. This warranty will no longer apply where the defect is a result of alteration, accident, misuse, abuse or neglect.

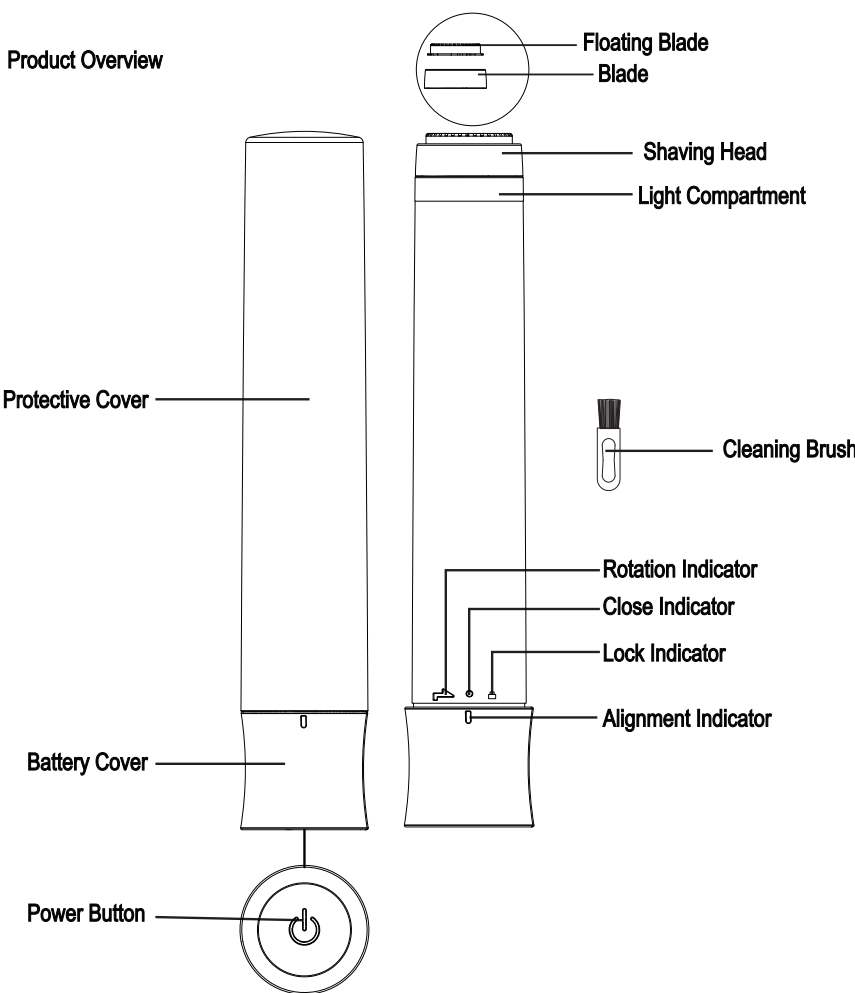
Please retain your receipt as proof of purchase and contact our Customer Service Centre as listed below, for the entity you purchased this product from, for any difficulties with your product. Warranty claims and claims for expense incurred in returning this product can be addressed to the respective Customer Service Centre.

Our goods come with guarantees that cannot be excluded under the Australian Consumer Law. You are entitled to a replacement or refund for a major failure and compensation for any other reasonably foreseeable loss or damage. You are also entitled to have the goods repaired or replaced if the goods fail to be of acceptable quality and the failure does not amount to a major failure.

Contact for Kmart purchases	Contact for Target purchases
<p>Kmart Australia Ltd. C/- Customer Service Centre 690 Springvale Road, Mulgrave Vic 3170 Customer Service: 1800 124 125 (Australia) or 0800 945 995 (New Zealand) or via Customer Help at kmart.com.au</p>	<p>Target Australia Pty Ltd C/- Customer Service Centre 2 Kendall Street, Williams Landing, Vic, 3027 Customer Service: 1300 753 567 or via Customer Help at target.com.au/help/contact-us</p>

WARNING Do not dispose of unit in fire or water. • Never attempt to disassemble and reassemble. • Waste electrical products should not be disposed of with household waste, please recycle where facilities exist. • Check with your local authority for recycle advice. • Keep your device and all accessories out of the reach of children and animals. • Small parts may cause choking or serious injury if swallowed. • Avoid eating your food and drinking from your glass or cup if the device is at or above 45°C. • Extreme temperatures can cause deforming of the device and reduce the charging capacity and life of your device. • Do not allow your device to get wet—liquids can cause serious damage. • Do not handle your device with wet hands.

Product Overview



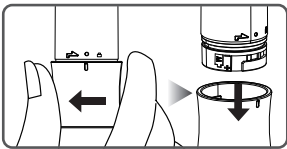
Product Specifications

Rated Voltage: DC 1.5V
Type of Battery: AA 1.5V x 1 (not included)

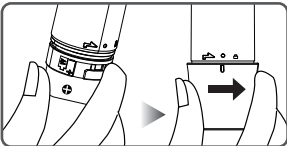
Instruction

Notes: In order to operate this product correctly, please read the following carefully before use

- Rotate the battery cover to the left to align the alignment indicator "■" with the rotation indicator "➡" and pull to remove the battery cover.



- Insert one AA battery into the battery compartment following the polarity of the battery (+ and -) (battery is not included). To put the battery cover back into place, align the alignment indicator "■" with the rotation indicator "↻", connect the battery cover with the device bottom by pressing firmly and rotate it until the alignment indicator "■" is aligned with the close indicator "◌".



Daily Skincare

- Remove the protective cover. Press the power button located on the bottom of the device to turn it on. The light in the light compartment will automatically turn on.
- Gently press the floating blade against your skin and shave with steady circular motions. Stretch the skin lightly with the free hand and shave with steady circular motions.
- After you finish using the device, press the power button to turn it off.
- To prevent the device from accidentally turning on in your purse, this device has a lock system. Rotate the battery cover to the right to align the alignment indicator "■" with the lock indicator "🔒" to lock the device.

Cleaning & Maintenance

- › Before cleaning, make sure this product is turned off.
- › Do not immerse the product in water for cleaning. Wash it with warm water and dry it immediately with a towel or tissue paper.
- › Do not use any lubricants, cleaners, polishes, solvent or air fresheners on this product.

⚠ WARNING

- Immediately stop using if your skin becomes irritated or you become unwell, seek medical assistance
- This appliance should not be used by person with reduced physical, sensory or mental abilities (including children).
- Remove battery if the product is not used for an extended period.
- Keep out of reach of children.
- DO NOT disassemble the main body.
- Do not place the appliance in hot or humid environment for a prolonged period of time.