

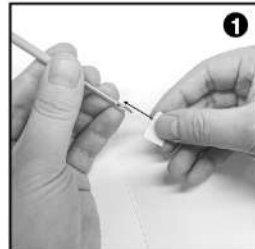
Punch Needle Instruction Manual

KIT INCLUDES:

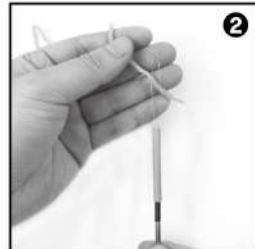


Punch Needle Needle Threader Hoop Fabric with printing Yarns

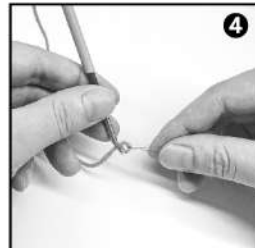
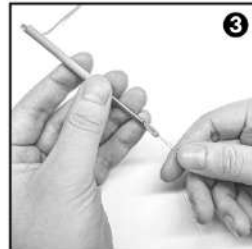
HOW TO THREAD A NEEDLE:



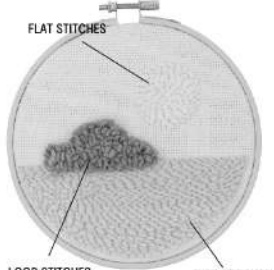
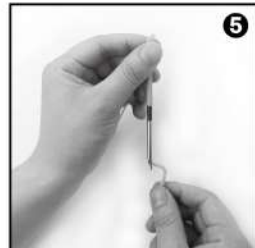
1 Insert the threader from the needle tip to needle top.



2 Place the end of the yarn into the threader and pull the threader back out of the needle tip.



4 Insert the threader through the hole of the needle tip and place the end of the yarn into the threader and pull back out of the hole. Remove the yarn from the threader. Threading is completed.

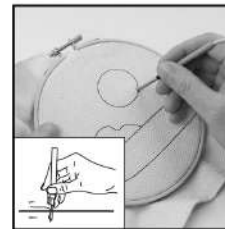


FLAT STITCHES LOOP STITCHES FLAT STITCHES

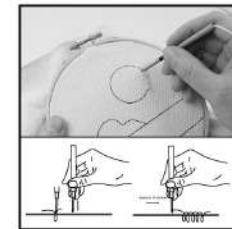


Use a marker to trace the outline onto the back of the fabric. This will make it easier to follow the design on the reverse side.

FLAT STITCHES

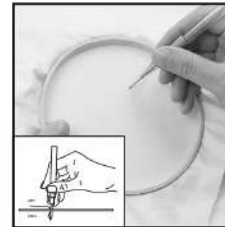


Place the fabric in the hoop with the outlined side of fabric facing upwards.

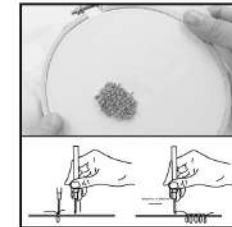


Refer to the image on box for yarn colour. Holding the needle like a pencil press the needle all the way through the fabric, so the grip of the needle touches the fabric. Then, lift needle out of fabric just enough to move onto the next stitch.

LOOP STITCHES



Flip the hoop to the reverse side of the fabric.



Using the same technique as flat stitches, once you have filled in the area, turn back and go over stitches once more to complete loop stitch.

TIPS:

The punch needle should penetrate all the way through the fabric, so that the grip of the needle touches the fabric. The needle must be pushed all the way in on each stitch, to create an even look. Lift needle out of fabric, just enough to move onto next stitch. Keep the needle as close to the fabric as possible. Lifting the needle too high shortens the loops on the front of the design and creates unwanted loops on the back.

MADE IN CHINA
© KMART AUSTRALIA LIMITED
FOR AU / NZ: IMPORTED FOR KMART STORES IN AUSTRALIA AND NEW ZEALAND:
KMART AUSTRALIA - 670 SPRINGALE ROAD, MULGRAVE, VIC 3170 AUSTRALIA
KMART NEW ZEALAND - REGIONAL OFFICE C/O KMART PAPAETOI/OTAGO STORE,
HUNTERS PLAZA, GREAT SOUTH ROAD, PAPAETOI/OTAGO, AUCKLAND, NEW ZEALAND
KMART CUSTOMER SERVICE
AU: 1800 124 125 NZ: 0800 945 995