

WARNING: CONTAINS LEADS WITH FUNCTIONAL SHARP POINT ON LEADS.

WARNING: FOR SAFETY REASONS, REMOVE ALL TAGS, LABELS AND PLASTIC FASTENERS BEFORE GIVING THIS TOY TO YOUR CHILD.

WARNING: BATTERIES ARE TO BE INSERTED WITH THE CORRECT POLARITY (+ AND -). DO NOT MIX DIFFERENT TYPES OF BATTERIES OR NEW AND USED BATTERIES. NON-RECHARGEABLE BATTERIES ARE NOT TO BE CHARGED. RECHARGEABLE BATTERIES ARE ONLY TO BE CHARGED BY AN ADULT. THE SUPPLY TERMINALS ARE NOT TO BE SHORT-CIRCUITED. REMOVE BATTERY FROM THE TOY WHEN NOT IN USE FOR AN EXTENDED TIME OR WHEN BATTERIES BECOME EXHAUSTED. BATTERY INSTALLATION BY AN ADULT IS REQUIRED. DISPOSE OF BATTERIES RESPONSIBLY. DO NOT DISPOSE OF IN FIRE.

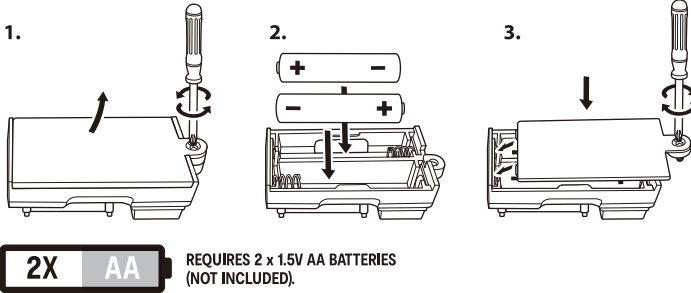
WARNING: CHOKING HAZARD- SMALL PARTS. NOT FOR CHILDREN UNDER 3 YEARS.

WARNING: HAIR ENTANGLEMENT MAY OCCUR IF THE CHILD'S HEAD IS TOO CLOSE TO THE MOTORISED UNIT OF THIS TOY. ADULT SUPERVISION AND ASSISTANCE REQUIRED.

PRODUCT MAY VARY SLIGHTLY FROM IMAGE SHOWN. PLEASE KEEP PACKAGING FOR FUTURE REFERENCE.

To insert batteries please unscrew battery cover with a screw driver. Insert the required batteries in accordance with battery polarity with + and - ends in the right position and then fix screw on the battery door to close the battery compartment case.

Please retain this information and this insert for future reference.



EXPLANATION

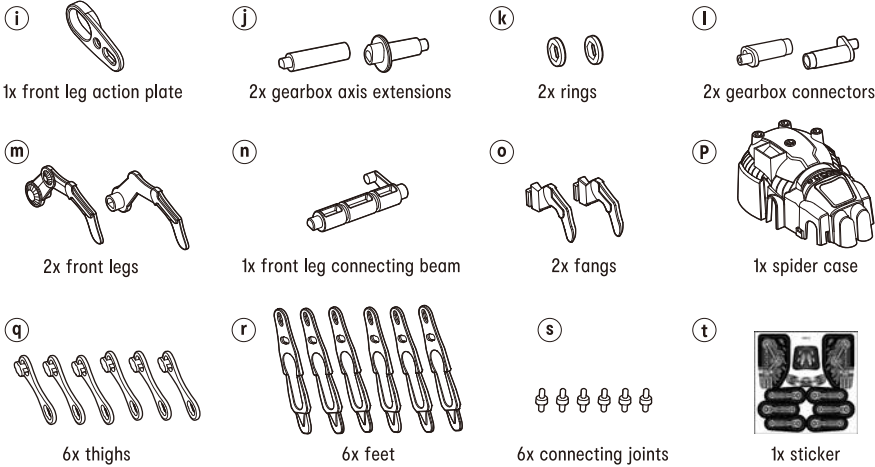
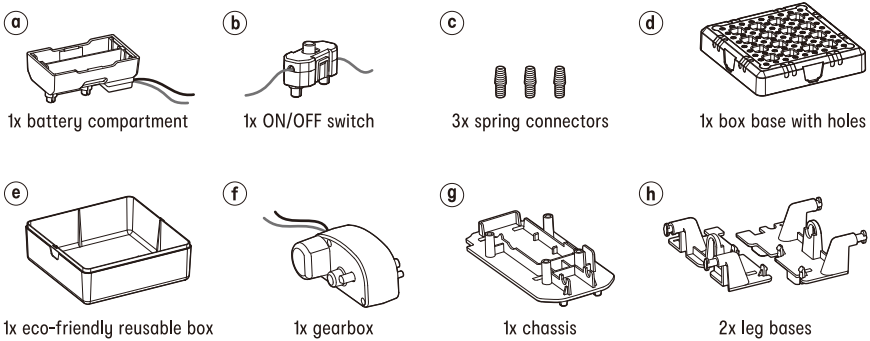
Spiders exist on every continent except Antarctica. Most spiders are predators. They mostly prey on insects and on other spiders. A few larger species are even capable of feeding on frogs, lizards and small mammals. It is not uncommon that people confuse spiders with insects because they apparently look alike. In fact, there are several major differences between insects and spiders:

- 6 legs vs 8 legs,
- 3 body segments vs 2 body segments
- 2 antennas vs no antenna

Interesting facts:

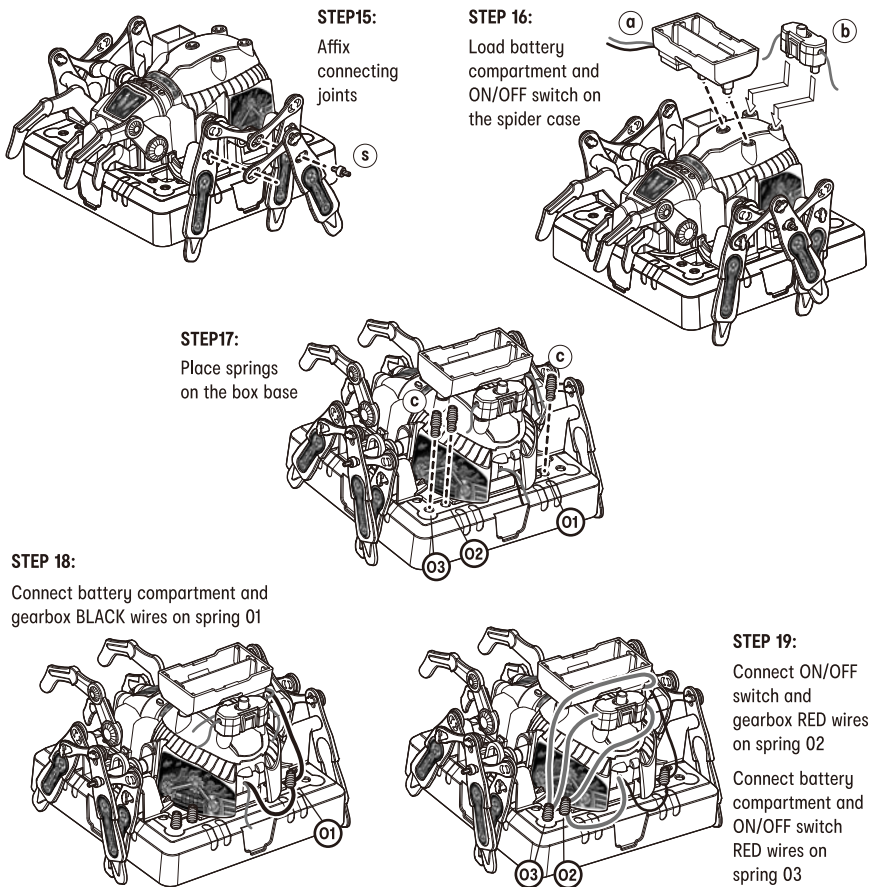
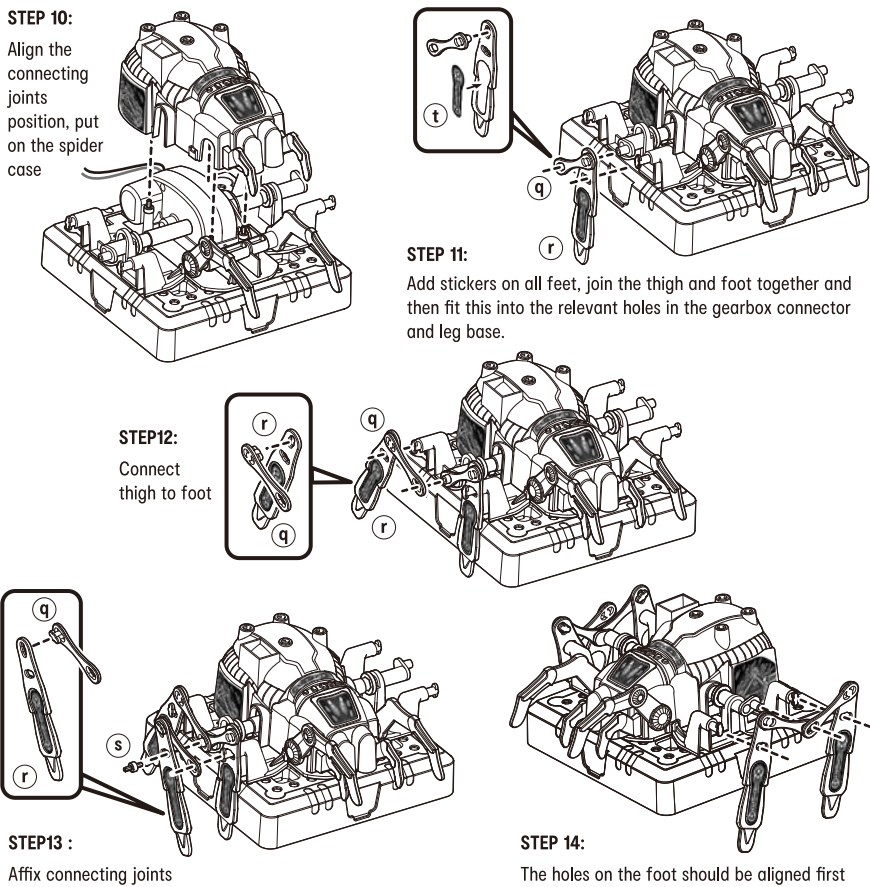
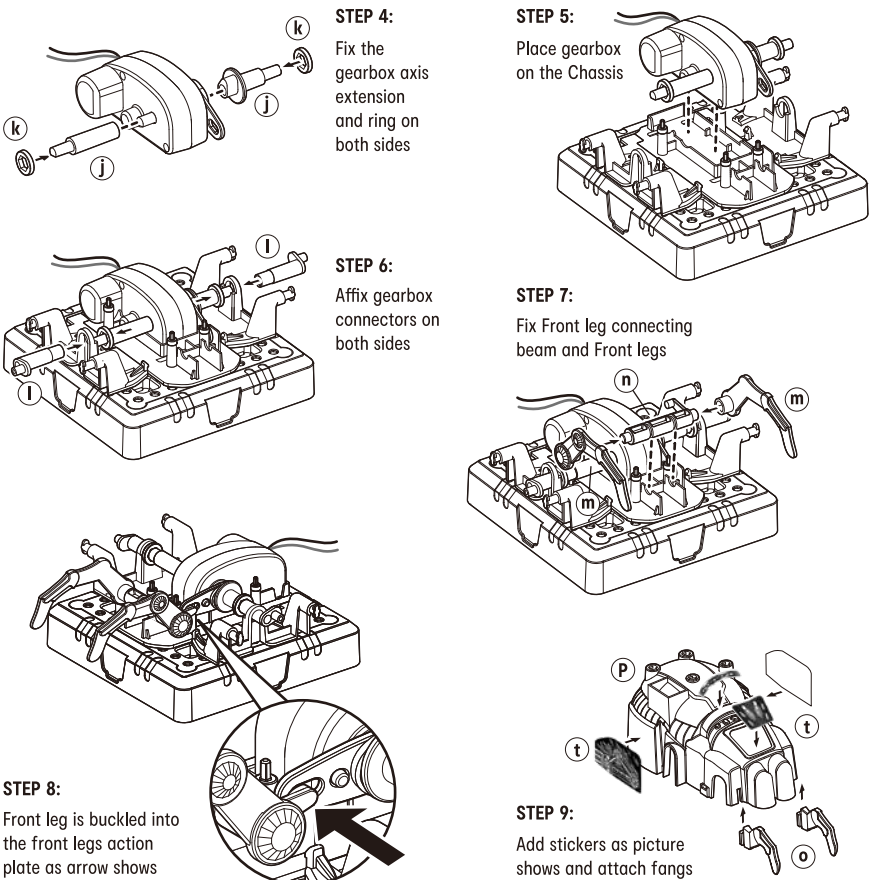
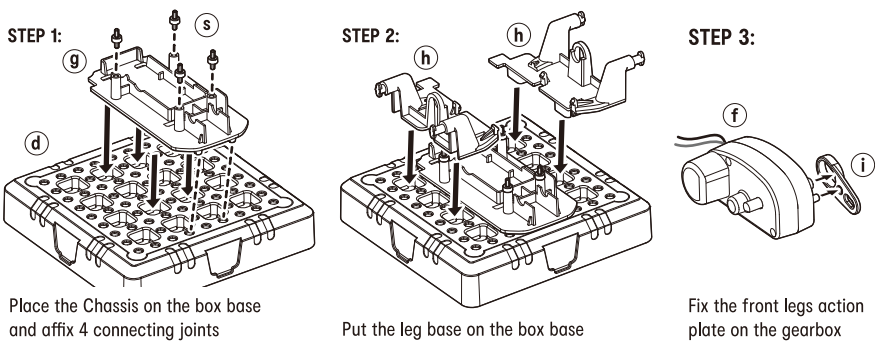
- › Most spiders are solitary, with some exceptional species being social.
- › Some spider species can lay hundreds of eggs at a time.
- › All spiders produce silks. Besides weaving web for catching prey, there are other ways of silk usage for different species, like weaving a net between front legs to catch their prey, using long silk with a spot of sticky glue like a fishing line to catch moths, or using very long silk thread to let the wind carry the thread and the spider away.
- › Though spider silks are made of protein, they have high tensile strength (need more force to stretch) and are stronger than steel weight for weight!
- › Many spiders are venomous, but only a few of them (e.g. the infamous black widow) could pose a threat to humans.

COMPONENTS IN THIS KIT



Assembling your Spider

Follow the below steps as figures shown.



BASIC CONNECTION PRINCIPLE

| Wiring connections | Spring (01) | Spring (02) | Spring (03) |
|-------------------------|-------------|-------------|-------------|
| Battery Compartment (a) | black | | red |
| ON/OFF Switch (b) | | red | red |
| Gearbox (f) | black | red | |

How to play

Insert 2pcs AA size batteries to the battery compartment. Turn the switch ON and the Robotic Spider will come to life! Watch the awesome crawling movement of this giant spider and keep it as your robotic pet!

Ensure all wires are correctly connected to the battery terminals and spring connectors as stated in the wiring sequence and connection. Bend the spring terminal over and insert the exposed shiny conductor part of the wire into the spring terminal. Make sure the wire is securely connected to the spring terminal.

If the circuit does not work, you can check the wire and spring terminal connection whether they are not well connected or the insulated plastic part of the wire has been wrongly inserted to spring terminal.

Warning! Do not short-circuit the battery terminals and spring connectors. Otherwise it may cause overheating. Do not lock the motor or other moving parts. Otherwise it may cause overheating.

If at any time in the future you should need to dispose of this product please note that waste electrical products should not be disposed of with household waste. Please recycle where facilities exist. Check with your local authority or retailer for recycling advice. (Waste Electrical and Electronic Equipment Directive)

43-148-691

MADE IN CHINA

FOR AU / NZ: IMPORTED FOR KMART STORES IN AUSTRALIA AND NEW ZEALAND.

anko

Build Your Own Robotic Spider

- › mechanical spider comes to life
- › watch the scientific spider crawl

8+ years

BATTERY POWERED

STEM

SCIENCE TECHNOLOGY ENGINEERING MATHS

