

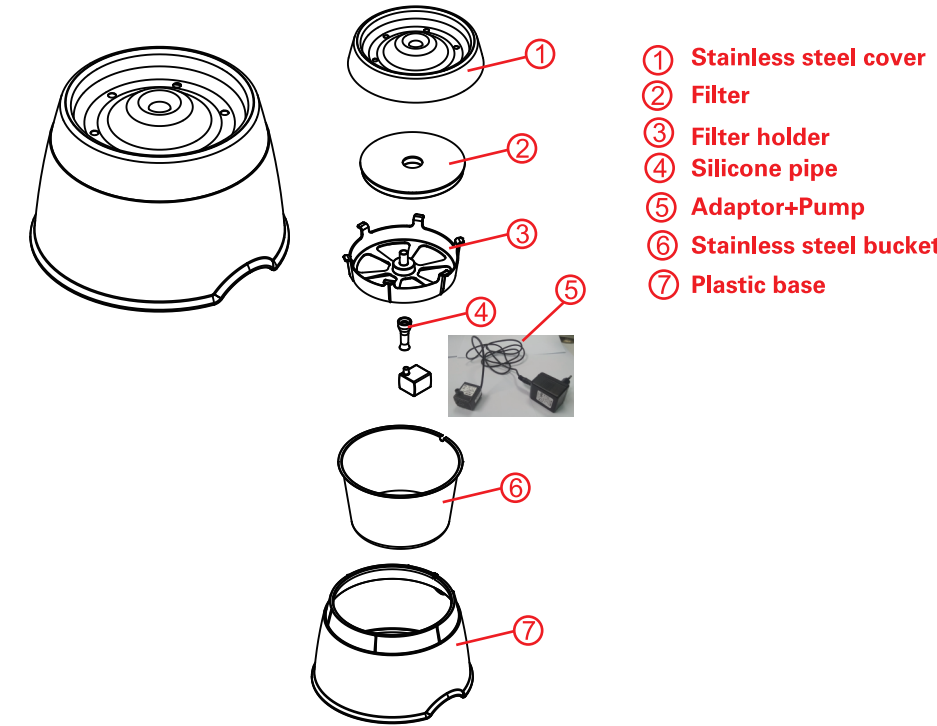
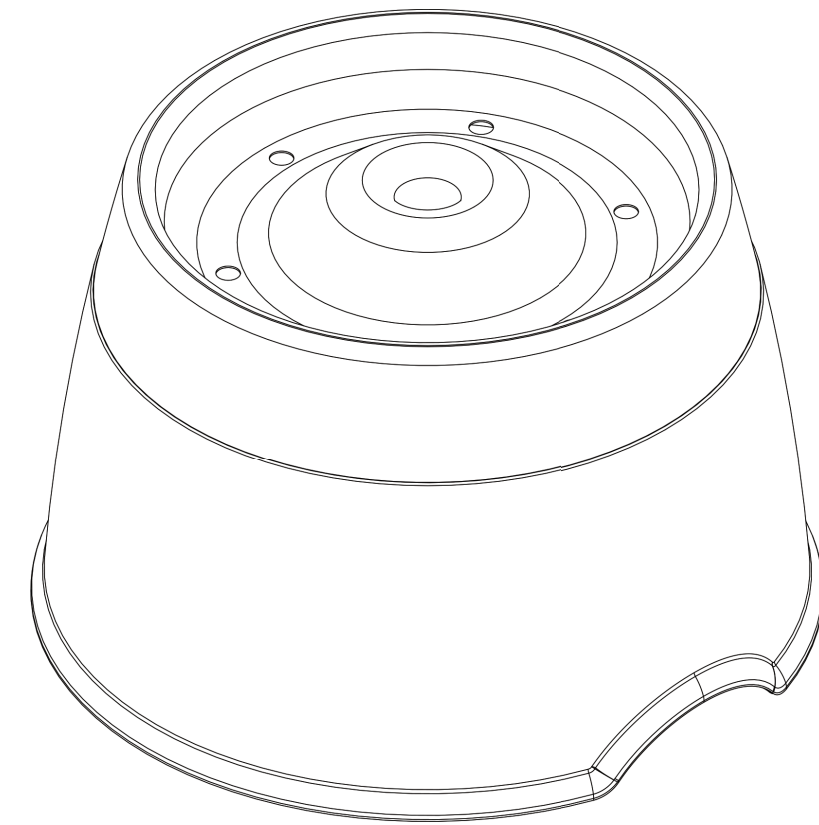
157g双铜, 420\*210mm, 4C+单黑, 折页, 切正

正面

背面



### Pet water Fountain



**SPECIFICATIONS**  
 Model: Pet water Fountain  
 Power requirements: Input 100-240V~50/60Hz 0.3A MAX  
 Output :12V  $\bar{\text{~}}$  200mA  
 Use provided power adaptor model CW1200200AU only

The drinking fountain can be simply disassembled to allow for an optimal clean. The filter holder and silicone connection pipe can be easily washed by hand. The stainless steel cover and stainless steel bucket are suitable for dishwashers.

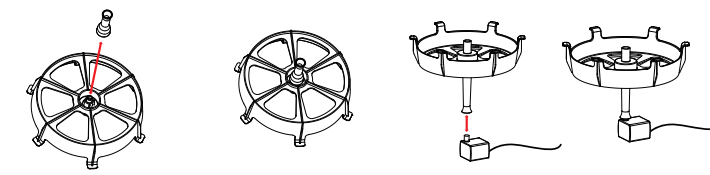
**USAGE TIPS**  
 When being introduced to this drinking fountain, your pet may be cautious about this new source of water. After putting the fountain into operation, allow your pet to get used to it at his or her own pace. Some pets take a few days or sometimes a little longer to begin using it.

Your pet may prefer the fountain to be placed away from their normal feeding area. Try plugging it in somewhere else, like the laundry room, bathroom or another corner of the kitchen.

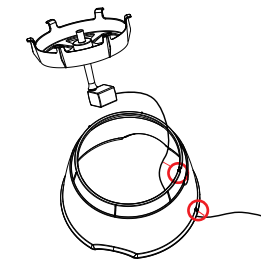
**DO NOT RUN DRY!**

#### OPERATING INSTRUCTIONS FOR YOUR DRINKING FOUNTAIN

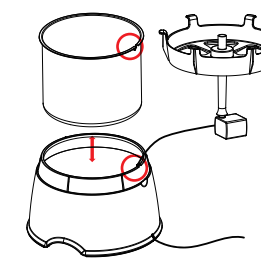
**STEP 1**  
 Attach the silicone connection pipe to the center of the filter holder's underside and connect the pump with the silicone pipe.



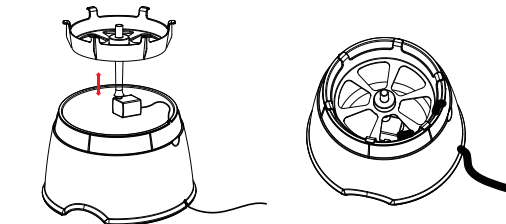
**STEP 2**  
 The wire should run down the inside of the plastic base, coming out from the gap at the bottom of the plastic base.



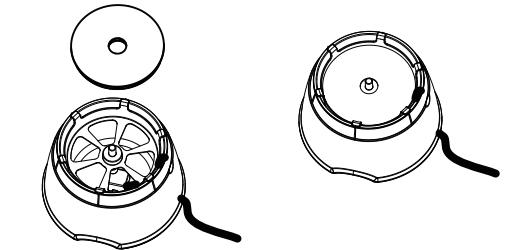
**STEP 3**  
 Put the stainless bucket in the plastic base, making sure that the gap on the stainless steel bucket is lined up with the gap on the plastic base.



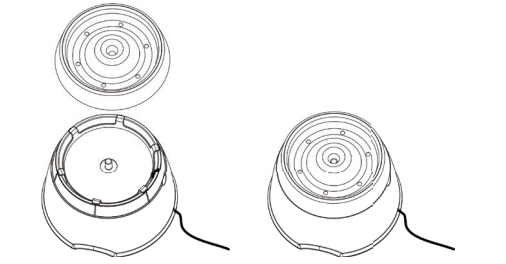
**STEP 4**  
 Put the filter holder on top of the stainless steel bucket.



**STEP 5**  
 Fill the drinking fountain with up to 3L of water. Make sure that the pump is always completely submerged so that it doesn't run dry. Put the filter in the filter holder with the plastic side facing downwards.



**STEP 6**  
 Put the stainless steel cover on top of the plastic base. Insert the plug into the outlet and give the pump a little time to start running.



**WARNING!**  
 When using electrical appliances, basic precautions should always be followed, including the following:  
 - Read the instructions thoroughly before using the appliance.  
 - To reduce the risk of injury, close supervision is necessary when an appliance is used near children.  
 - Only use attachments recommended or sold by the manufacturer.  
 - Do not use outdoors. FOR INDOOR USE ONLY.  
 - Do not unplug by pulling on the power cord. To unplug, grasp the plug, not the power cord.  
 - Do not operate any appliance with a damaged cord or plug, or after the appliance malfunctions or is dropped or damaged in any way.

**FOR PORTABLE APPLIANCES**  
 - To reduce the risk of electrical shock, do not place or store the appliance where it can fall or be pulled into a tub or sink.  
 - Always unplug any appliance when not in use, before putting on or taking off parts, and before cleaning.  
 - Never pull the power cord to remove the plug from the outlet.

**SAFETY INSTRUCTIONS - INSTRUCTIONS PERTAINING TO RISK OF FIRE, ELECTRICAL SHOCK OR HARM TO PERSONS**  
 - Do not allow pets or children to chew on or swallow any fountain parts. If you are concerned about the power cord, purchase a cord conduit or cord cover at any home improvement or hardware store.

- Do not attempt repairs on the motor yourself.  
 - If the plug of this device gets wet, turn off the electricity to that outlet. Do not attempt to unplug it.  
 - To avoid the possibility of the plug or outlet getting wet, the outlet should always be above the level of the fountain.  
 - Examine this appliance after installation. It should not be plugged in if there is water on the cord or plug.  
 - If an extension cord is necessary, a cord with a proper rating should be used.

This product is not intended for use by persons (incl. children) with reduced physical, sensory or mental capabilities or with a lack of experience and/or knowledge without a person responsible for their safety present who can supervise this person and make sure that they are operating the device according to the directions. Make sure that children do not play with this device. Keep children away from the packaging material. Choking hazard if swallowed. Ensure that nobody puts the packaging bag over their head.

**DANGER OF INJURY AND MATERIAL DAMAGE**  
 Protect the device against heat and cold. Maximum ambient temperature: 0 C/+30 C.  
 Protect the device from mechanical influences, such as an impact or fall. Do not use any scratching or abrasive cleaning products which could damage the surface. Check the condition of the product before use. Do not operate any defective devices.

**ELECTRICAL HAZARD**  
 In order to prevent short circuits and therefore electric shocks, never use the device with any other power supply than that intended. Stop using the product, if it has fallen into water. Do not use the device if it is damaged or has been dropped on the floor. In order to prevent danger, only have repairs carried out on the product by a service workshop.

**DISPOSAL OF THE DEVICE**  
 Old devices may not be disposed of in domestic waste. If the device will no longer be used, every consumer is required by law to dispose of old devices separately from domestic waste, e.g. at a collection point in his community/ neighborhood; Doing so will ensure that old devices are recycled correctly and negative effects on the environment are prevented. This is why electrical devices are labelled with the image shown.

**WARNING: FOR PET USE ONLY. SUPERVISE YOUR PET DURING USE. FOR YOUR PET SAFETY, INSPECT REGULARLY AND REMOVE IF DAMAGED. PLACE THE PRODUCT ON A FLAT SURFACE BEFORE TURNING ON.**