

6+ YEARS

SUPER LOOP SLOT CAR DELUXE SET

INSTRUCTIONS

1. Assembly Instructions

- Assemble the track set as shown in Diagram 02. Make sure to use correct components as shown in Diagram 01. Do not join the tracks together if the joints are bent or distorted. Use tools to adjust any distorted joints as shown in Diagram 05.
- Use component "C" to connect each track, see Diagram 04. (no need to assemble component "C" in the middle of track, see Diagram 03)
- Attach the fence to the side of tracks as shown in Diagram 06.
- Assemble component "A" to the track as shown in Diagram 07.

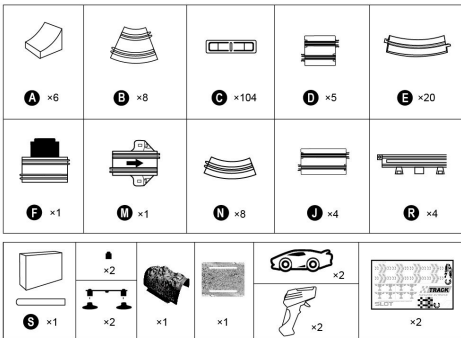


Diagram 01

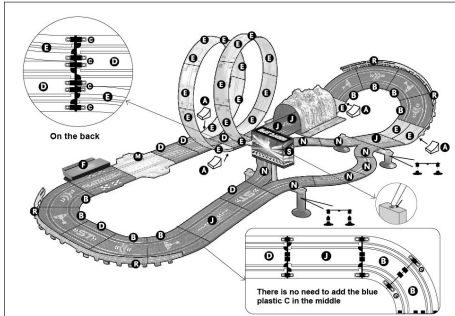


Diagram 03

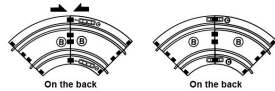
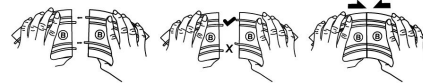
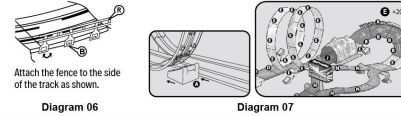


Diagram 04



Use your fingers to adjust the distorted joints before joining tracks. Do not join the tracks together if the joints are distorted.

Diagram 05

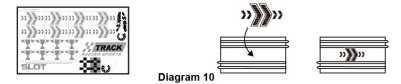


2. Lap Counter

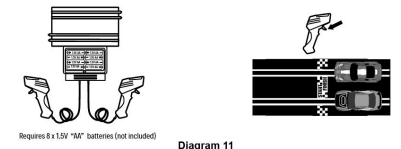
- The track includes a lap counter, see Diagram 07. It will start counting when the car runs through.
- If you want to recount, keep moving the red key, until it returns to zero. See Diagram 08.



3. DIY Track Sticker



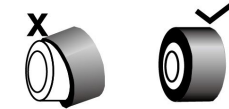
4. How To Play



- Assemble hand controller as shown in Diagram 11.
- Unscrew to open battery lid and insert 6 x 1.5V AA batteries as shown in Diagram 11.
- Fasten the battery lid.
- Place vehicle on the track and press the hand controller to start your race. Make sure the vehicle runs in the correct direction of the lap counter.

Performance tips: Use hand controller to control vehicle speed. Press the hand controller firmly, the vehicle speed will go faster, relax the hand controller, speed will slow down. The vehicle may run off tracks if speed is too fast / slow.

5. Cautions



- Make sure the wheels and tyres are installed correctly on vehicle as shown in Diagram 12.
- Use your hand to adjust the metal brush as shown in Diagram 13.
- Clean the gap and then use a dry cloth to wipe thoroughly, the surface of the tracks. Make sure the brushes are kept clean and in the correct position, see Diagram 14.

WARNING: FOR SAFETY REASONS, REMOVE ALL TAGS, LABELS AND PLASTIC FASTENERS BEFORE GIVING THIS TOY TO YOUR CHILD.

WARNING: BATTERIES ARE TO BE INSERTED WITH THE CORRECT POLARITY (+ AND -). DO NOT MIX DIFFERENT TYPES OF BATTERIES OR NEW AND USED BATTERIES. NON-RECHARGEABLE BATTERIES ARE NOT TO BE RECHARGED. RECHARGEABLE BATTERIES ARE ONLY TO BE CHARGED UNDER ADULT SUPERVISION. RECHARGEABLE BATTERIES ARE TO BE REMOVED FROM THE TOY BEFORE BEING CHARGED. THE SUPPLY TERMINALS ARE NOT TO BE SHORT-CIRCUITED. REMOVE BATTERIES FROM THE TOY WHEN NOT IN USE FOR EXTENDED TIME OR WHEN BATTERIES BECOME EXHAUSTED. BATTERY INSTALLATION BY AN ADULT IS REQUIRED. DISPOSE OF BATTERIES RESPONSIBLY. DO NOT DISPOSE OF IN FIRE.

MADE IN CHINA
 KY00006-42000009
 ADULT ASSEMBLY AND ASSISTANCE REQUIRED.
 PRODUCT MAY VARY FROM IMAGE SHOWN.
 READ THE INSTRUCTIONS BEFORE OPERATING THE PRODUCT.
 PLEASE KEEP THE PACKAGING FOR FUTURE REFERENCE.
WARNING: CHOKING HAZARD
 SMALL PARTS. NOT FOR CHILDREN UNDER 3 YEARS.