



# H4

## 3 – Axis Handheld Gimbal

3–Axis Handheld Gimbal, the electric stabilizer for taking photo or taking video .You can easily make stable video or clear photo by yourself  
.....

## User Manual

## CONTENTS

Packing List	02
Introduction	02
Product Display	03
Balance Adjustment	05
Product Usage	05
Specification	07

### **Warning:**

**Do not let children to play with this product. This is not a toy.**

**Always switch off the product before make any adjustment to prevent damage with your device.**

## Packing List

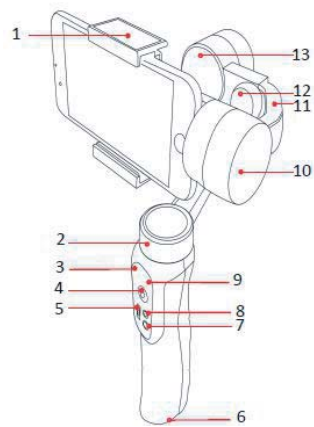
Item	Product Name	Qty'
1	<b>Handheld Gimbal</b>	X1
2	<b>USB Cable</b>	X1
3	<b>User Manual</b>	X1

## Introduction

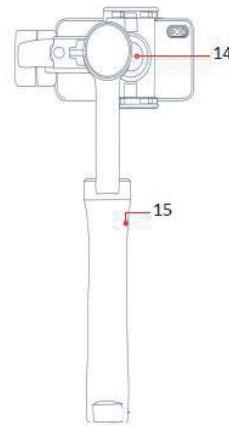
### 6 Features:

- ◆ Quick Adjustable By Hand
- ◆ Automatic adjustment of up / down / left / right
- ◆ Vertical shooting by hand gestures
- ◆ One-Key Back original position
- ◆ Scene mode: Locked mode / Half-follow mode / Full-follow mode
- ◆ USB Charging ( Explosion-proof battery )

## Product Display



- 1 Smartphone Bracket
- 2 Pan Motor
- 3 Charging indicator
- 4 Joystick
- 5 Mode switching
- 6 1/4" Threaded Hole
- 7 Shooting Mode
- 8 Power ON / OFF

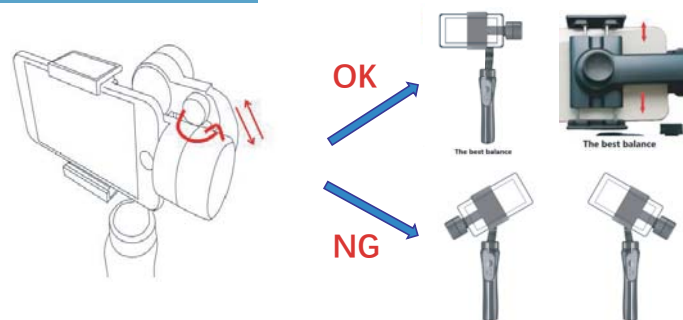


- 9 Working status indicator
- 10 Tilt Motor
- 11 Balance adjustment arm
- 12 Balance Knob
- 13 Roll Motor
- 14 Bracket locking knob
- 15 Micro-USB Charging Port

## Product Display

1. **Smartphone Bracket:** Hold smartphone steadily. Compatible with smart phone/action camera of 110~230g weight, 60~75mm width.
2. **Pan Motor:** 320° rotation, responsible for the left and right stabilization of the picture.
3. **Charging indicator:** When charging, red light always on. Fully charged, green light always on.
4. **Joystick:** Adjust the shooting angle up, down, left or right according to the pushing direction.
5. **Mode switching:** Locked mode (The camera always faces the fixed direction); Half-follow mode (Turn left or right correspondingly with handle); Full-follow mode (The camera follows the direction of handle freely rotation)
6. **1/4" Threaded Hole:** Tripod bracket interface.
7. **Shooting Mode:** Connect Bluetooth after Gimbal power on, then click it to control picture shooting and video.
8. **Power ON / OFF:** ① Long press 3 seconds to power on. Long press 3 seconds to power off.  
② Double-press the stabilizer returns to the initial setting.
9. **Working status indicator:**
  - Power on/off: Red light flashing.
  - All/Half/None Locked: Green light always/Slowly/fast flashing.
  - Low voltage: Red light flashing.
10. **Tilt Motor:** 320° rotation, responsible for the up and down stabilization of the picture.
11. **Balance adjustment arm:** Responsible for balancing the horizontal direction of mobile phone.
12. **Balance Knob:** Balance bracket position fixed knob.
13. **Roll Motor:** 180° rotation, Responsible for holding the mobile phone to a vertical position with the handle.
14. **Bracket locking knob:** Lock mobile phone bracket.
15. **Micro-USB Charging Port:** Insert Micro-USB cable to charge the stabilizer.

## Balance Adjustment



Adjustment methods: Make sure the gimbal switch off before adjust. Load your phone to the bracket. Loose the balance knob and adjustment arm length. The mobile phone should remains at best balance level. Then tight the balance knob.

Notices: Balance adjustment of mobile phone can make stabilizer work more energy-saving. When the balance deviation of mobile phone is large, the stabilizer can still work, but motors will consume too much electricity. At the same time, the torsion used to enhance stability also decreases.

## Product Usage

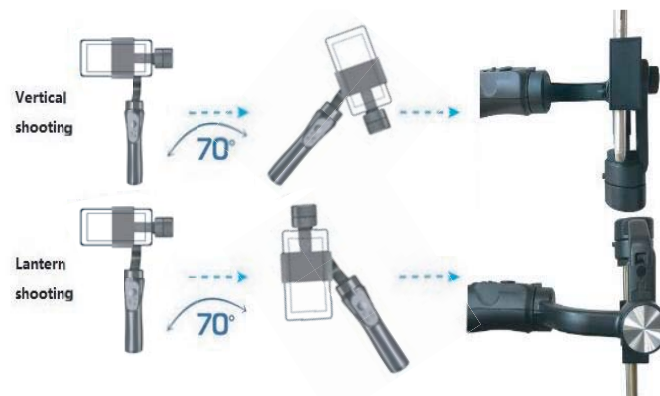
1. Charge 4 hours to the stabilizer via USB port before use.
2. Refer to the previous mobile phone loading / unloading and adjust the balance.
3. Press and hold 3 seconds, green light display after turn on successfully.
4. Open Bluetooth and search "GP H4" to connect, open mobile camera and press the Shooting Mode button to take pictures/videos.

Notices: 1. Please be sure to load the phone before starting the stabilizer.

2. Samsung Mobile Phone shooting mode Settings: Turn on the cell phone camera, click on the Gear Settings Icon, set "Press the Volume Key" to Photo/Camera, then press the Shooting Mode key of the stabilizer to take pictures/videos.

## Product Usage

### 5. Vertical / Lateral shooting mode



### 6. Shooting mode (based on Framing screen)



## Product Usage

- ① Locked Mode: All 3 axes are locked (TILT,ROLL and PAN). The camera stays still and stable.  
You may control TILT and PAN motors by using the joystick (press up/down/ and left/right)
  - ② Half-follow mode: TILT and ROLL motors are locked. The smartphone pans left and right.  
You may control TILT motor by using the Joystick (press up/down).
  - ③ Full-follow mode: Roll Motor is locked. The smartphone pans left/right and tilts up/down.
7. At locked axis, the direction of camera faced can be fastly adjusted by hand.

## Specification

Charging voltage	5V	No.3 Motor (Tilt)	-160°~160°
Charging current	1A	Battery specification	3.7V rechargeable lithium battery
Working voltage	3.4~4.2V	Battery duration	approx. 4H
Working current	0.2A~9A	Working temperature	10°C~45°C
No.1 Motor (Pan)	-160°~160°	Net weight(including battery)	About 400g
No.2 Motor (Roll)	-90°~90°	Product dimension(L/W/H)	291*120*50mm



**Safety instructions:**

Do not disassemble this product.

Keep away from direct sunlight, fire and high voltage equipment.

Do not store the product a car during hot weather.

Shall not be exposed to excessive heat such as sunshine, fire or the like.

Device may become warm while charging.

Be assured to turn product completely off when plugging and unplugging into outlet.

The marking information is located at the bottom of apparatus.