








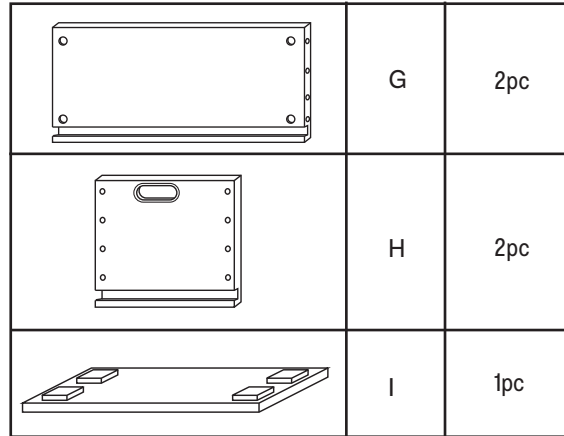
# ASSEMBLY INSTRUCTIONS

## 42827887 STORAGE TOY BOX W/ WHEELS

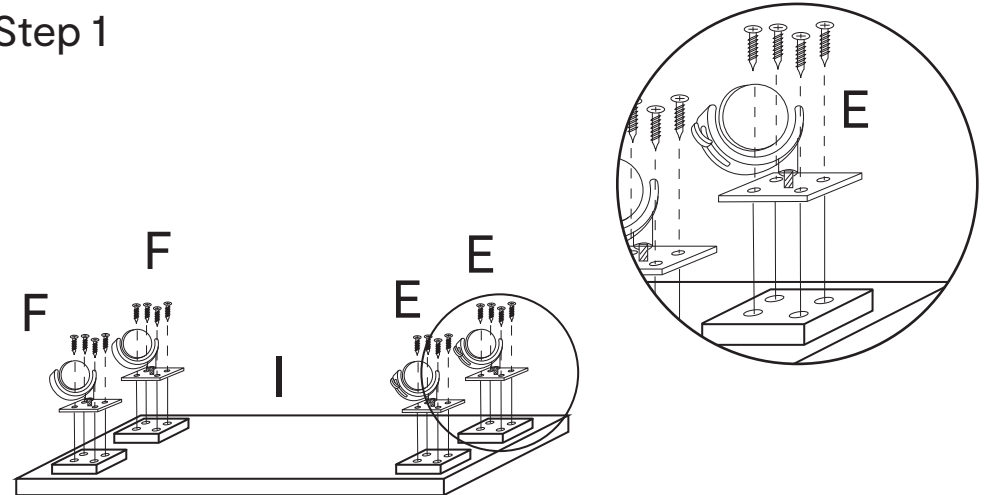
ASSEMBLY INSTRUCTIONS: PLEASE READ THESE INSTRUCTIONS CAREFULLY.  
 PLEASE ENSURE YOU HAVE ALL PARTS BEFORE YOU START ASSEMBLING.  
 PLACE ALL PARTS ON A CLEAN AND FLAT SURFACE.  
 TOOL REQUIRED: PHILIPS HEAD SCREWDRIVER (NOT PROVIDED)

Hardware list

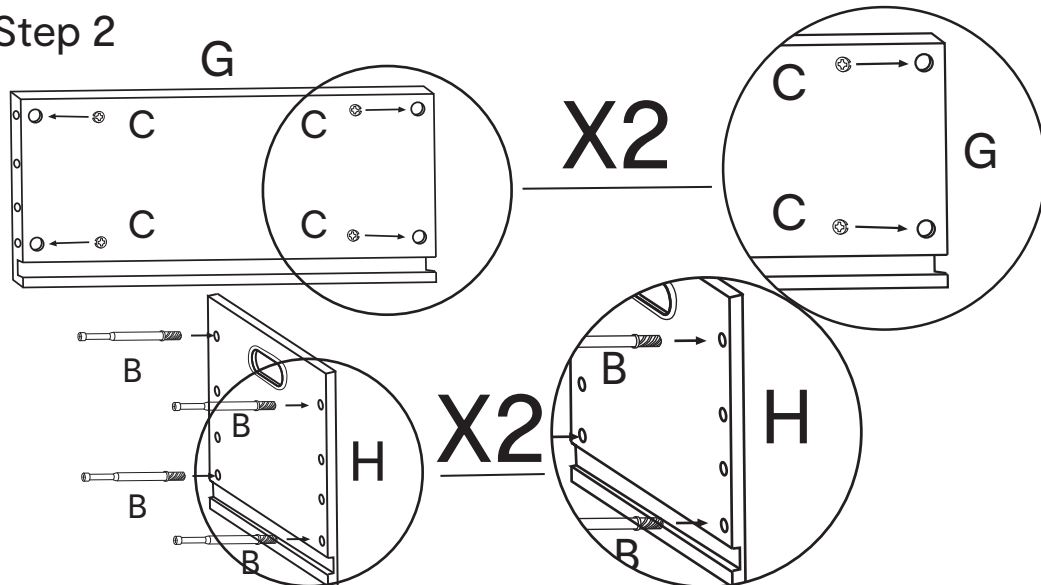
	A	8pc
	B	8pc
	C	8pc
	D	16pc
	E	2pc
	F	2pc
	H	8pc



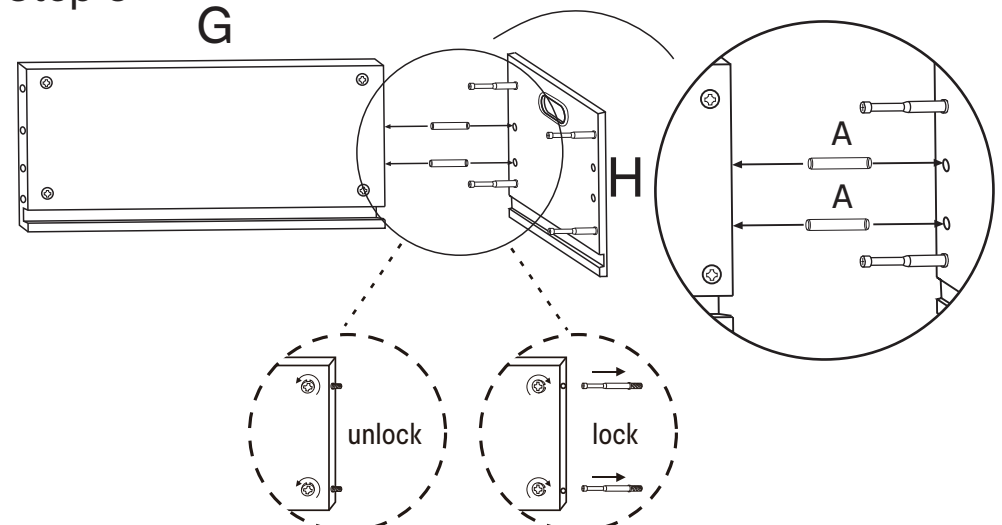
Step 1



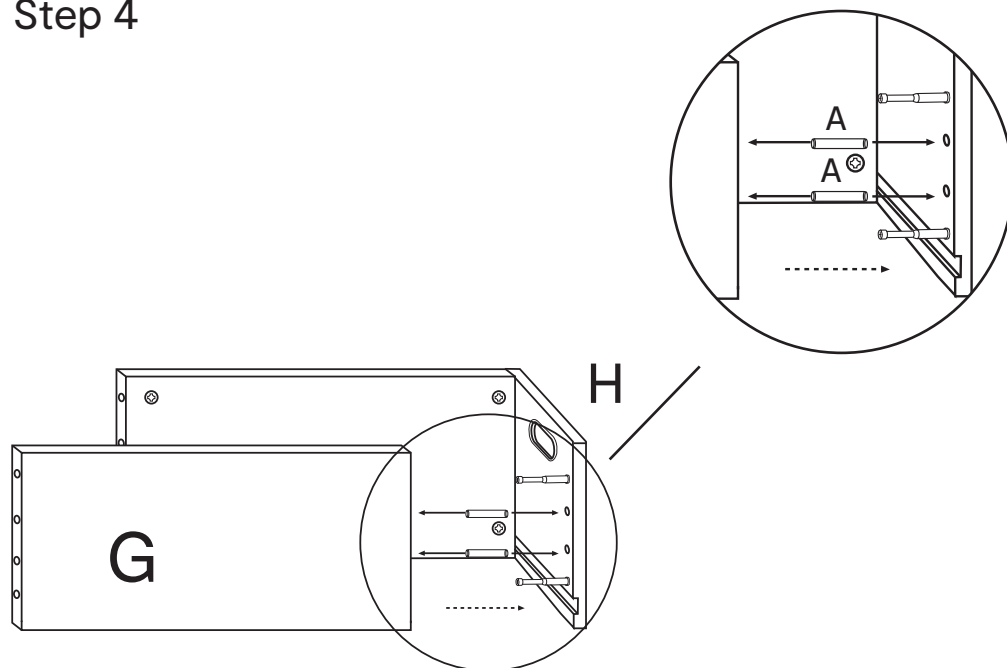
Step 2



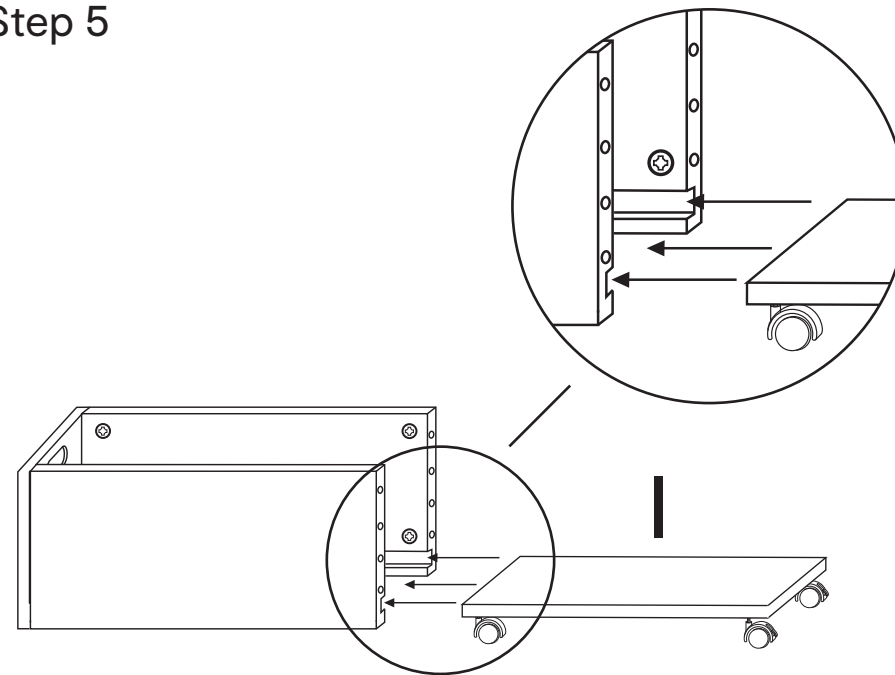
Step 3



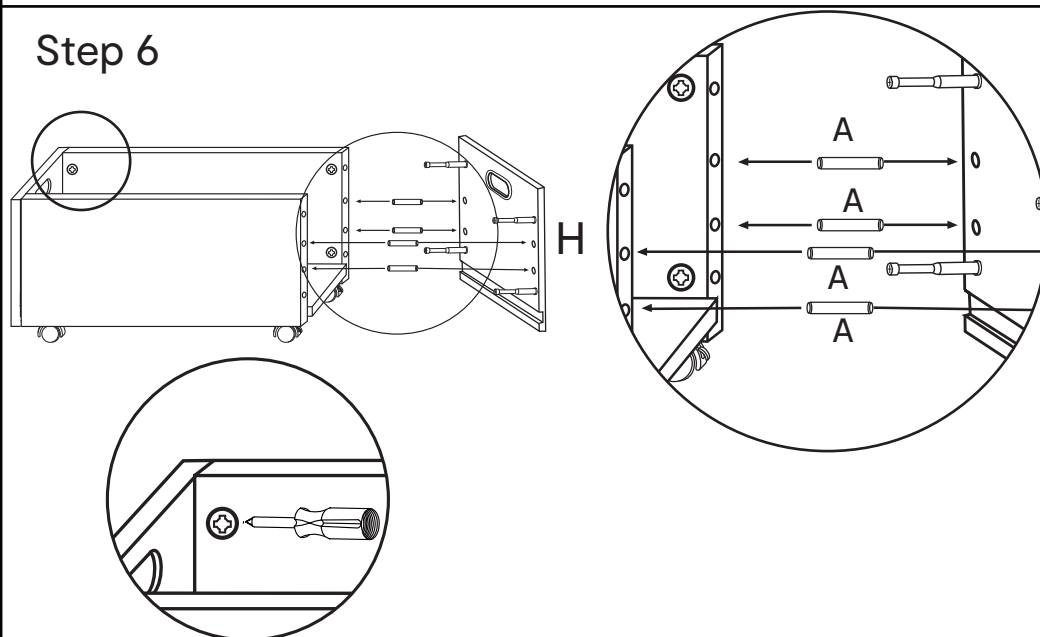
## Step 4



## Step 5

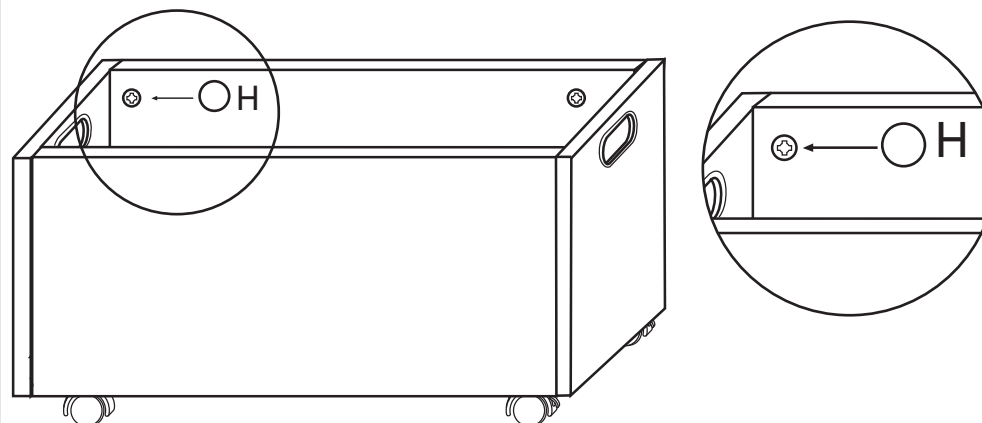


## Step 6



Tighten all the round screws from part C with a screwdriver once assembly is completed.

## Step 7: Use screw sticker H to cover all the screws hole C



**WARNING:**  
THIS PACKAGE CONTAINS SMALL PARTS AND SHARP POINTS,  
KEEP AWAY FROM CHILDREN UNTIL ASSEMBLY IS COMPLETED.  
ADULT ASSEMBLY REQUIRED.  
MAXIMUM SAFE LOAD: 5KG