



INSTRUCTION

CAUTION – THIS PRODUCT CONTAINS FUNCTIONAL SHARP EDGES, TAKE EXTRA CARE WHEN HANDLING. KEEP OUT OF REACH OF CHILDREN

Before First Use: Wash all parts in hot soapy water, rinse with clean water and dry with a soft cloth.

Dicing: To use the dicer first attach the lid onto the bowl, ensuring that the lid is attached properly over the lip on the edge of the bowl. Insert the desired attachment into the lid. Attach cover to the lid, push the cover down to dice.



Small Blade

Small Blade:
Dice garlic, onions, peppers, etc.
Please **DO NOT** use for **carrots**,
potatoes.



Large Blade

Large Blade:
Dice potatoes, onions,
cucumbers, radishes, apples, etc.

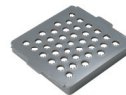
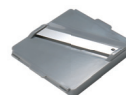


Garnish Dicer

Garnish Dicer:
ONLY for soft vegetables like
mushrooms, strawberries,
kiwis, hard boiled eggs, bananas
and more. Please **DO NOT** use for **carrots**,
potatoes or other hard vegetables.



Slicing & Grating: To use the slicer or grater first attach the lid onto the bowl, ensuring that the lid is attached properly over the lip on the edge of the bowl. Attach slicing and grating cover to the lid, insert the desired attachment into the cover. Use the safety holder when slicing or grating.



21X28.5CM