

**SENSORY BALL PIT**

IMPORTANT! KEEP FOR FUTURE REFERENCE.

**6-36**  
months



**1**

**PARTS LIST**



**ASSEMBLY INSTRUCTIONS**



1. Carefully open the pit as the spring loops may quickly pop open.



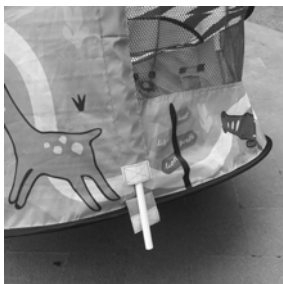
2. Insert the four tubes into the pockets.



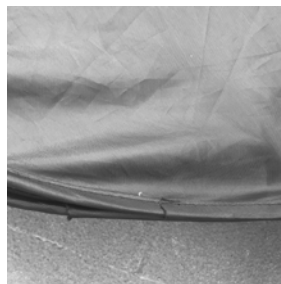
3. Place the balls into the pit.

**2**

## FOLD AWAY INSTRUCTIONS



1. For easy fold away, keep product on the floor and remove the 4 tubes from pockets.



2. Find the spring connection.



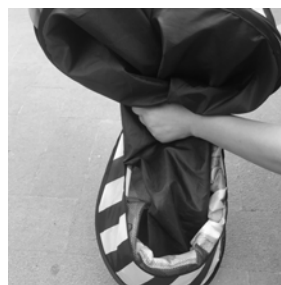
3. Press the product symmetrically and flatten down the pit.



4. Press the round sides into a semicircle.



5. Twist the item round into itself.



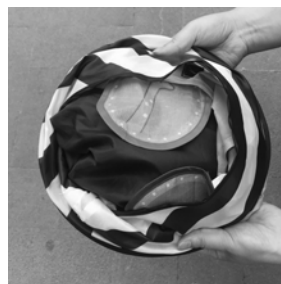
6. Fold in half.



7. Form three circles.



8. Pack the middle circle inside.



9. Fold into 3 even circles, suggest to use cord to tie the product or put into color box and keep it in a safe place.

## WARNING:

1. Adult assembly required.
2. Always read all the instructions before assembly and use of the product.
3. Take care and keep the child away when unpacking and during assembly.
4. Inspect the product before assembly and periodically during use. Never use this product if there are any loose or missing fasteners, joints or broken parts.
5. Any additional or replacement parts should only be obtained from the manufacturer or distributor.
6. Never substitute parts.
7. This product has an internal spring frame that will 'POP' open with some force. Never let small children unfold or fold this product.
8. Never allow a naked flame near this product-although made from fire retardant fabric, it will burn if left in contact with a naked flame.
9. Only use this product on level ground, clear of any stones or other sharp objects.
10. Do not continue to use this product if any part of the frame becomes either bent or broken.

### CARE INSTRUCTIONS:

Surface clean only. Wipe with a damp cloth.

Keycode: 42747628

### MADE IN CHINA

© KMART AUSTRALIA LIMITED

ANKO, KIDS&CO. AND BABY SOLUTIONS® ARE TRADEMARKS OF KMART AUSTRALIA LIMITED. THEY ARE USED IN NEW ZEALAND BY KMART NZ HOLDINGS LIMITED TRADING AS KMART IN NEW ZEALAND.

KMART AUSTRALIA - 690 SPRINGVALE RD, MULGRAVE, VIC 3170 AUSTRALIA.

KMART NEW ZEALAND - REGIONAL OFFICE C/O KMART PAPATOETOE STORE HUNTERS PLAZA, GREAT SOUTH RD, PAPATOETOE, AUCKLAND, NEW ZEALAND.