



New Adventures LLC LTD

2019

Kmart Au

PRODUCT NAME

Interactive Baby

ITEM #

3537

LANGUAGE

English

SIZE

8.5"(W) x 11"(H)

TYPE

IM

COLOR

**K**

DATE

28 November 2018

DESIGNER / ARTIST

Cow

FILE NAME

2019\_Kmart Au\_Interactive Baby\_IM.ai

English

Color: Black



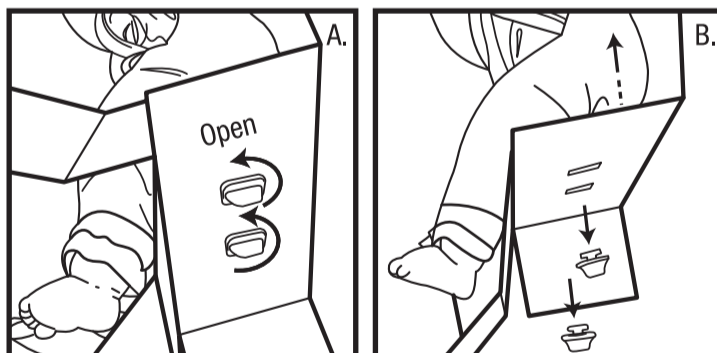
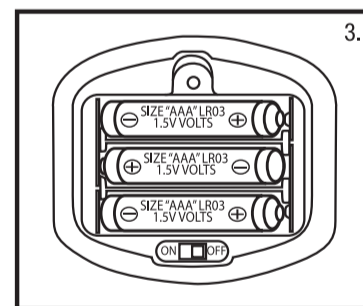
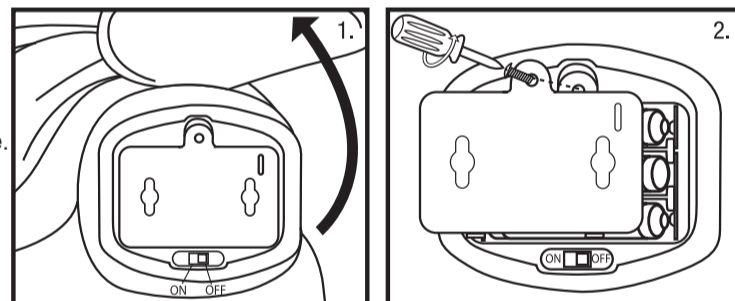
# Interactive Baby

## INSTRUCTIONS

### HOW TO PLAY:

- 1) Turn the ON/OFF switch on the battery case to the "ON" position.
- 2) Wave hand in front of doll to activate.
- 3) **Daisy** - makes sounds and blows Kisses to you.  
**Bella** - makes sounds and places pacifier to her mouth.  
**Olivia** - makes sneeze sounds and places tissue paper to her nose.
- 4) Wave hand in front of doll again to re-activate after she stops.
- 5) Please switch back to "OFF" position if you do not want to continue playing. This will save battery life.

**NOTE:** Please follow keys turning direction to release doll from the package. Turn left (counter-clockwise) to Open. (see Fig. A & B) keys are not part of toy and should be removed before giving it to your child.



### IMPORTANT: ONLY PARENTS / ADULTS SHOULD REPLACE BATTERIES.

WARNING: BATTERIES ARE TO BE INSERTED WITH THE CORRECT POLARITY. DO NOT MIX DIFFERENT TYPES OF BATTERIES OR NEW AND USED BATTERIES. NON-RECHARGEABLE BATTERIES ARE NOT TO BE RECHARGED. RECHARGEABLE BATTERIES ARE ONLY TO BE CHARGED UNDER ADULT SUPERVISION. RECHARGEABLE BATTERIES ARE TO BE REMOVED FROM THE TOY BEFORE BEING CHARGED. THE SUPPLY TERMINALS ARE NOT TO BE SHORT-CIRCUITED. REMOVE BATTERIES FROM THE TOY WHEN NOT IN USE FOR EXTENDED TIME OR WHEN BATTERIES BECOME EXHAUSTED. DISPOSE OF BATTERIES RESPONSIBLY. DO NOT DISPOSE OF IN FIRE.  
CAUTION: BATTERY INSTALLATION BY AN ADULT IS REQUIRED.

### BATTERY INSTALLATION :

1. Locate the battery compartment on bottom of the doll. (see Fig. 1)
2. Have an adult use a small Phillips® screwdriver to remove the battery compartment top. (see Fig. 2)
3. Insert 3 x 1.5V AAA size batteries following polarity markings. (see Fig. 3) We recommend using alkaline batteries.

### CLEANING THE DOLL:

1. Use a damp cloth to wipe off the doll.
2. Do not put the doll in a washing machine.

Please keep these instructions for future reference as they contain important information.

**CAUTION:** All ties or fasteners are not part of this toy and should be removed before giving it to your child.  
Colour and product may vary from photo.

2+Years

P1



Size: 8.5" x 11"