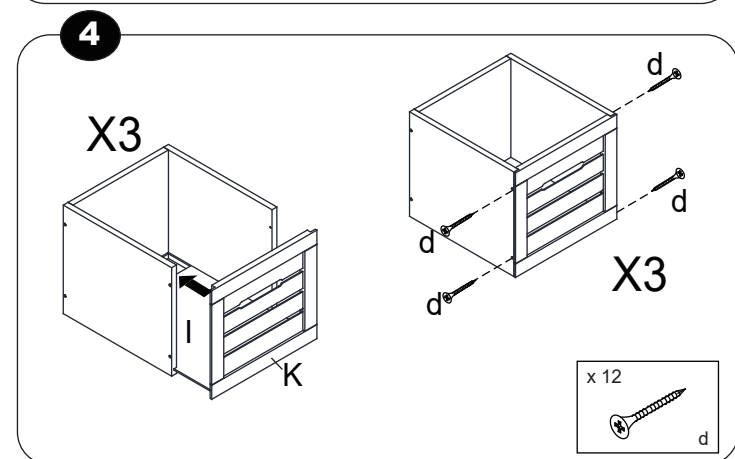
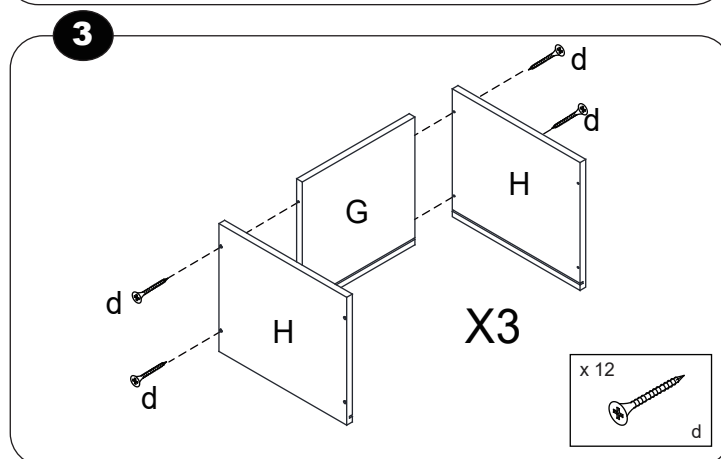
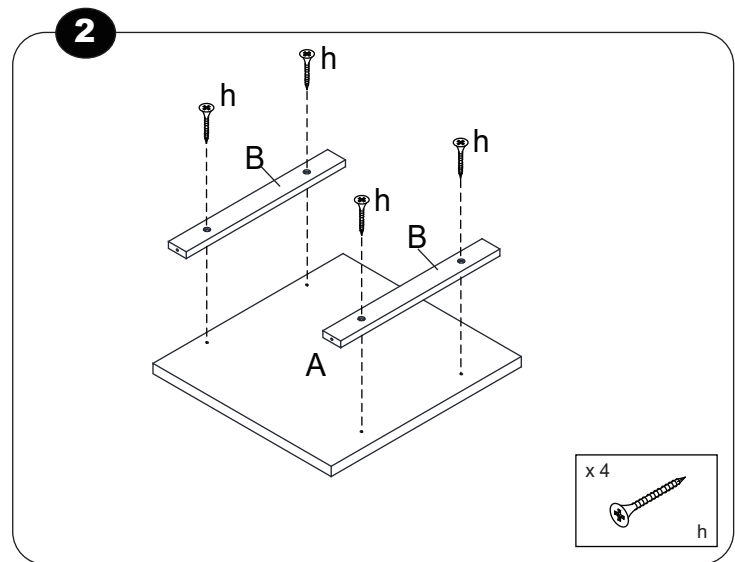
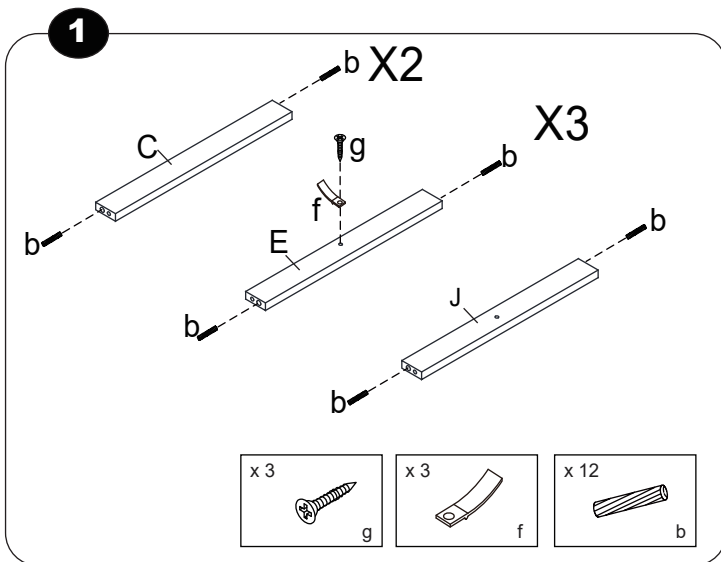
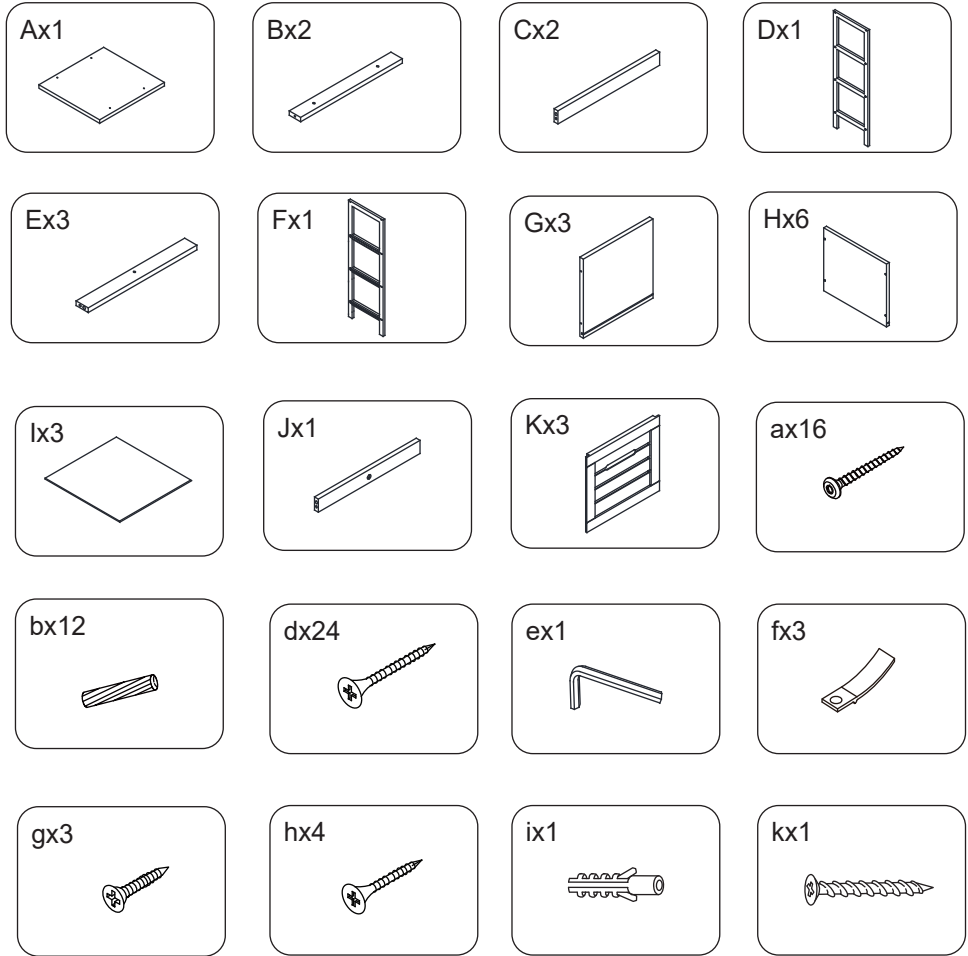
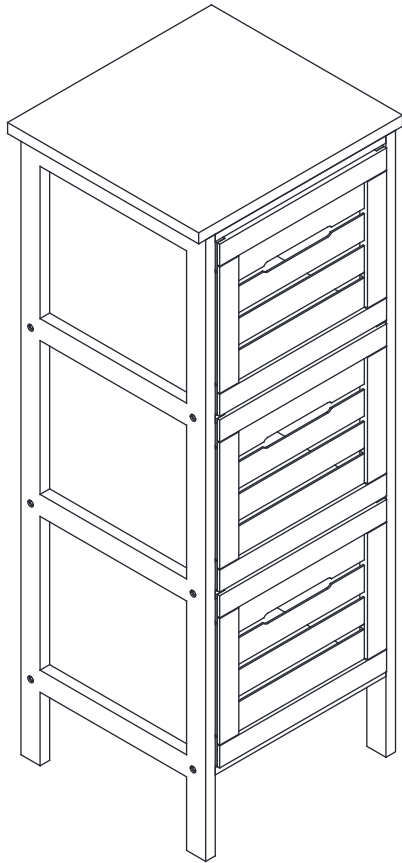
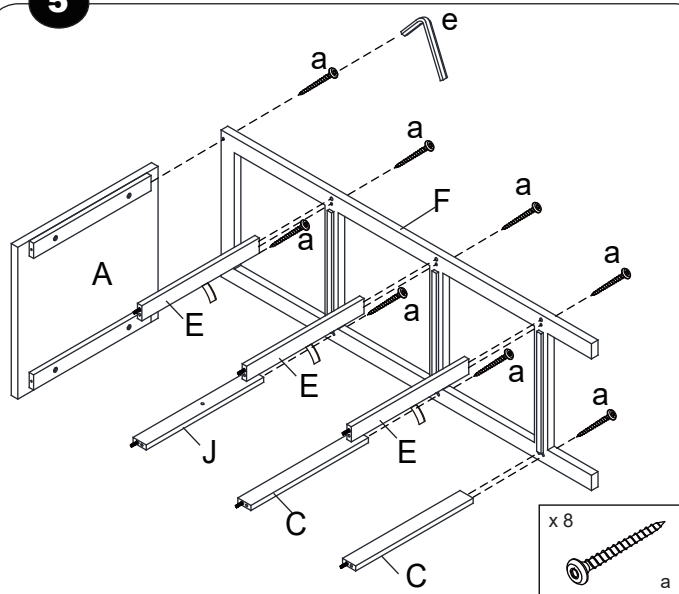


ASSEMBLY INSTRUCTION

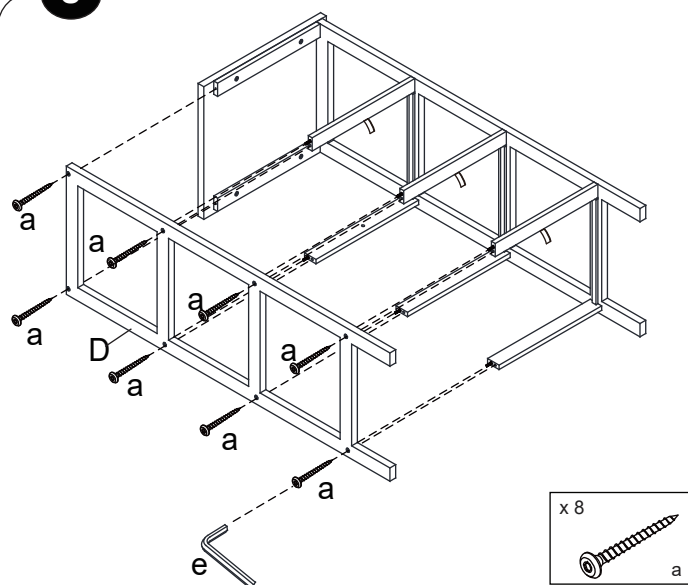
TOOLS REQUIRED: PHILIPS HEAD SCREWDRIVER



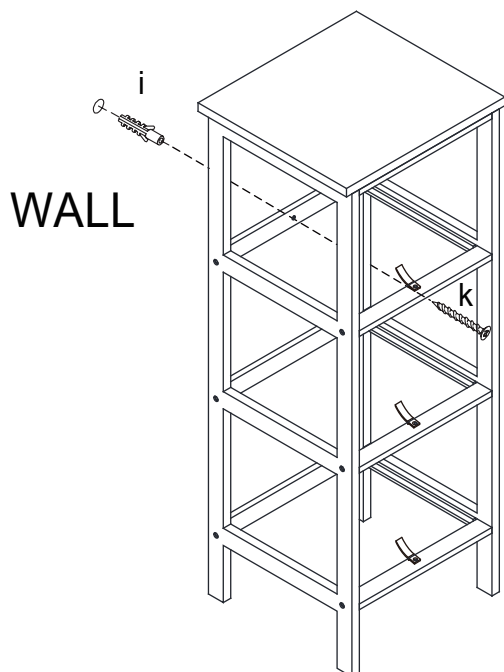
5



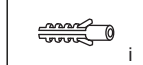
6



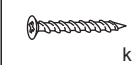
7



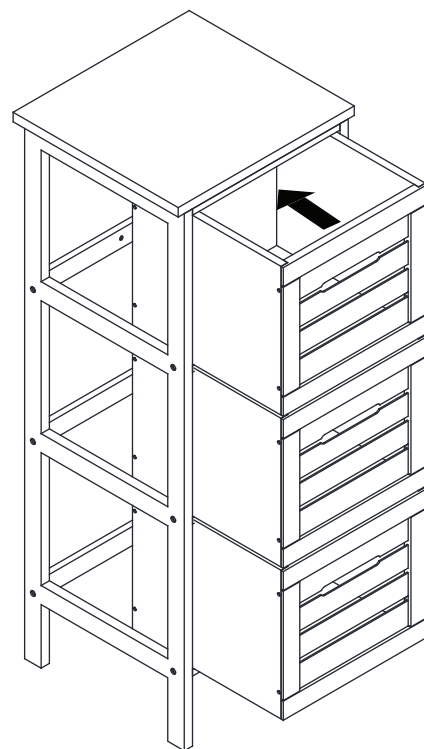
x 1



x 1



8



⚠ WARNING:

PLEASE READ THE INSTRUCTIONS CAREFULLY. BE SURE YOU HAVE ALL PARTS BEFORE YOU START ASSEMBLY. ASSEMBLE ON A CLEAN, SOFT CARPETED SURFACE TO AVOID SCRATCHING THE SURFACE OF THE UNIT.

WARNING: THIS PACKAGE CONTAINS SMALL PARTS AND SHARP POINTS. KEEP AWAY FROM CHILDREN AND BABIES UNTIL ASSEMBLY IS COMPLETED.

WARNING: DO NOT STAND, SIT OR LEAN ON THIS UNIT. DO NOT USE THE UNIT UNLESS ALL BOLTS, SCREWS AND KNOBS ARE FIRMLY SECURED. USE ONLY ON A FLAT SURFACE. FAILURE TO FOLLOW THIS WARNING COULD RESULT IN SERIOUS INJURY.

MAXIMUM SAFE LOAD LIMIT FOR EACH SHELF: 5KG

USER INSTRUCTIONS FOR WALL FIXINGS: IT IS STRONGLY RECOMMENDED THAT THIS PRODUCT IS PERMANENTLY FIXED TO THE WALL. PLEASE SEEK PROFESSIONAL ADVICE IF YOU ARE IN DOUBT OF WHAT FIXING DEVICE TO USE. REGULARLY CHECK THAT WALL FIXINGS ARE SECURELY MAINTAINED. USE SAFETY DRAWER LOCKS TO PREVENT CHILDREN CLIMBING. STABILITY OF TALL ITEMS MAY BE AFFECTED BY THICK PILE CARPET OR UNEVEN FLOORS. DO NOT PLACE UNANCHORED TELEVISIONS ON FURNITURE.

CAUTION: FOR YOUR SAFETY WHEN ATTACHING THE WALL FIXINGS, PLEASE NOTE THE FOLLOWING:

CHECK ANY ELECTRICAL WIRES OR PLUMBING INSIDE THE WALL BEFORE DRILLING ANY HOLES (IF YOU ARE UNSURE PLEASE SEEK PROFESSIONAL ADVICE FROM A QUALIFIED TRADESPERSON).



TOPPLING HAZARD

WARNING: PLEASE SECURE YOUR FURNITURE WITH THE SUPPLIED WALL FIXING. SCAN THE CODE FOR MORE INFORMATION.

