

单面尺寸145\*210mm

## BATTERY DISPOSAL

If the epilator is to be disposed the batteries should be removed from the appliance before it is scrapped. The groomer must be disconnected from the charger when removing the battery. The battery should be disposed safely. Used batteries should be taken to a recycling facility and not disposed of with household waste.

**IMPORTANT: Always fully discharge the batteries before removal and ensure the charger is unplugged.**

## TECHNICAL SPECIFICATIONS

Model no.	HC-307
Working time	Approximately 40 minutes
Charging time	1.5hr
Battery Charger	ZDJ045100AU
	Input: 100-240V~ 50/60Hz
	Output: 4.5V DC, 1000mA
Battery type	Li-ion, 700mAh, 3.7V cell

## 12 Month Warranty

Thank you for your purchase from Kmart.

Kmart Australia Ltd warrants your new product to be free from defects in materials and workmanship for the period stated above, from the date of purchase, provided that the product is used in accordance with accompanying recommendations or instructions where provided. This warranty is in addition to your rights under the Australian Consumer Law.

Kmart will provide you with your choice of a refund, repair or exchange (where possible) for this product if it becomes defective within the warranty period. Kmart will bear the reasonable expense of claiming the warranty. This warranty will no longer apply where the defect is a result of alteration, accident, misuse, abuse or neglect.

Please retain your receipt as proof of purchase and contact our Customer Service Centre on 1800 124 125 (Australia) or 0800 945 995 (New Zealand) or alternatively, via Customer Help at Kmart.com.au for any difficulties with your product. Warranty claims and claims for expense incurred in returning this product can be addressed to our Customer Service Centre at 690 Springvale Rd, Mulgrave Vic 3170.

Our goods come with guarantees that cannot be excluded under the Australian Consumer Law. You are entitled to a replacement or refund for a major failure and compensation for any other reasonably foreseeable loss or damage. You are also entitled to have the goods repaired or replaced if the goods fail to be of acceptable quality and the failure does not amount to a major failure.

For New Zealand customers, this warranty is in addition to statutory rights observed under New Zealand legislation.

# anko

## Epilator Instruction Manual



**Model no.: HC-307**

## SAFETY GUIDE

### PLEASE READ CAREFULLY BEFORE USING THIS APPLIANCE

Please follow all the precautions listed below for safety and to reduce the risk of injury or electric shock.



**WARNING: READ ALL INSTRUCTIONS; FAILURE TO FOLLOW ALL INSTRUCTIONS LISTED BELOW MAY RESULT IN ELECTRIC SHOCK, FIRE OR SERIOUS PERSONAL INJURY.**

### SAVE THESE INSTRUCTIONS FOR FUTURE REFERENCE

1. For hygienic reasons, do not share this appliance with other people.
2. This appliance contains batteries that are non-replaceable.
3. When switched ON, the appliance must never come in contact with the hair on your head, eyelashes, ribbons, etc. to prevent any danger or injury as well as to prevent blockage or damage to the appliance.
4. Only use the appliance as described in this manual.
5. Do not immerse the appliance in water or any other liquid.  
**Warning: Keep the appliance dry**
6. Do not allow the appliance to be exposed to rain or moisture during use or storage.
7. Always check the appliance for damage prior to use. If any damage is observed, do not use the appliance.
8. The appliance is intended for indoor use only.
9. Always switch the appliance OFF after use.
10. This appliance has no user serviceable parts. Do not attempt to access the internal components in the appliance.
11. This appliance is for personal use only, not designed for commercial use.
12. Do not use it outdoors.
13. Do not use the appliance if it is not working properly, if it has been dropped or if it has been immersed in any liquid.
14. Before using the appliance, ensure that the epilator/ shaver head are securely fitted.
15. Do not use it on children or allow children to play with the appliance.
16. The appliance is not to be used by persons (including children) with reduced physical, sensory or mental capabilities, or lack of experience and knowledge, unless they have been given supervision or instructions concerning use of the appliance by a person responsible for their safety.
17. Children must be supervised to ensure that they do not play with the appliance.
18. For electrical safety, do not operate the charger with a damaged cord or plug, if it is not working properly, if it has been dropped or damaged or dropped into water.
19. Use only the original charger supplied with the appliance.

## SHAVING



### WARNING:

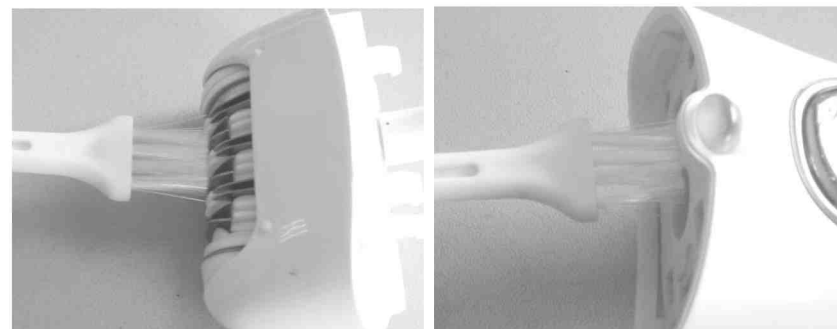
**Before using the shaver, always check for wear and damage. If the shaver shows any signs of wear or damage, do not use or it may cause injury.**

1. Attach the shaver head to the main unit. Push on the attachment into the slot of the main body until it audibly and firmly locks into place.
2. To turn on the appliance, press the lock key then push the On/Off switch to position "1" or "2".
3. Pre-trim the contours desired with the hair trimmer or precision trimmer.
4. Gently press the shaver onto the skin and shave along contoured edges to remove any stubbles. Do not press too hard.
5. On areas that are harder to shave, such as chin, stretch the skin for a better result.

## CLEANING AND MAINTENANCE

### Clean the epilator head

- Clean the epilator after each use
- Always switch OFF the epilator before cleaning.
- Press the head release button and detach the epilator head.
- The epilator head can be removed and rinsed for cleaning. For optimal cleaning; brush hairs from the tweezers before rinsing.



### Clean the shaver head

- Press the head release button and detach the shaver head.
- Remove the cutting blade by pulling upwards then remove the foil assembly from shaver head.
- Gently shake the cutting blade and shaver head to remove the hair. Use the cleaning brush gently to clean the shaver head and the main unit.



### WARNING:

**The body of the epilator is not washable. Do not submerge in water.**

1. Attach the epilator head to the main unit. Push on the attachment into the slot of the main body until it audibly and firmly locks into place.
2. To turn on the epilator, press the lock key then push the On/Off switch to position "1" of "2".
3. Speed "1" is recommended for fine hair and speed "2" is recommended for course hair or stronger hair growth.
4. The light illuminates as long as the appliance is switched ON. This provides better visibility of fine hair or skin.
5. Hold the skin taut to make the hairs stand upright. Position the epilator flat so that the trezeers are at 90° angle and flat against the skin.
6. Slowly and gently glide the epilator over skin. The movement should be against the hair growth.



7. Repeat each area until all unwanted hair is removed.
8. After epilating, turn the epilator OFF and replace the protective cap for storage.

#### ARM & LEG EPIRATION

Epilate from the lower arm or leg and slowly move upwards. To epilate behind the elbow or knee, keep the arm or leg straight to stretch the skin.

#### UNDERARM & BIKINI LINE EPIRATION

Please be aware that this area is particularly sensitive, therefore we recommend that you select speed "1" for the first few times. With repeated usage the pain sensation will diminish.

When epilating the underarm, keep your arm raised up so that the skin is stretched and then guide the appliance in different directions.

To make more comfort, ensure the skin is held taut and the hair is at the optimum length of 2-5mm. If the hair is too long, trim the hair with scissors before epilation.

20. Check that your supply voltage is the same as that stated on the charger.
  21. When charging the appliance, the power switch must be OFF.
  22. It is normal for the charger to become warm to touch when charging.
  23. Use only attachments provided.
  24. This product contains sharp blades, please take utmost care during handling and use.
  25. Do not stretch, twist and curl the cable around the appliance.
  26. Keep the cable away from hot surfaces.
  27. Do not replace the batteries with non-rechargeable batteries.
- CAUTION: To avoid personal injury, do not use the epilator if it has a damaged blade or shaver foil.**
28. Detach the attachment heads for cleaning. Only the attachments can be washed under tap water.
  29. Do not submerge the appliance, nor make it flow under water-tap.
  30. Do not use salt water or boiling water. Also, do not use cleaning products that are designed for toilets, bathrooms or kitchen appliances
  31. The epilator must be used only with provided battery charger ZDJ045100AU



**WARNING: Do not recharge non-rechargeable batteries.**



**WARNING: Before charging the product, please make sure your hands are dry.**



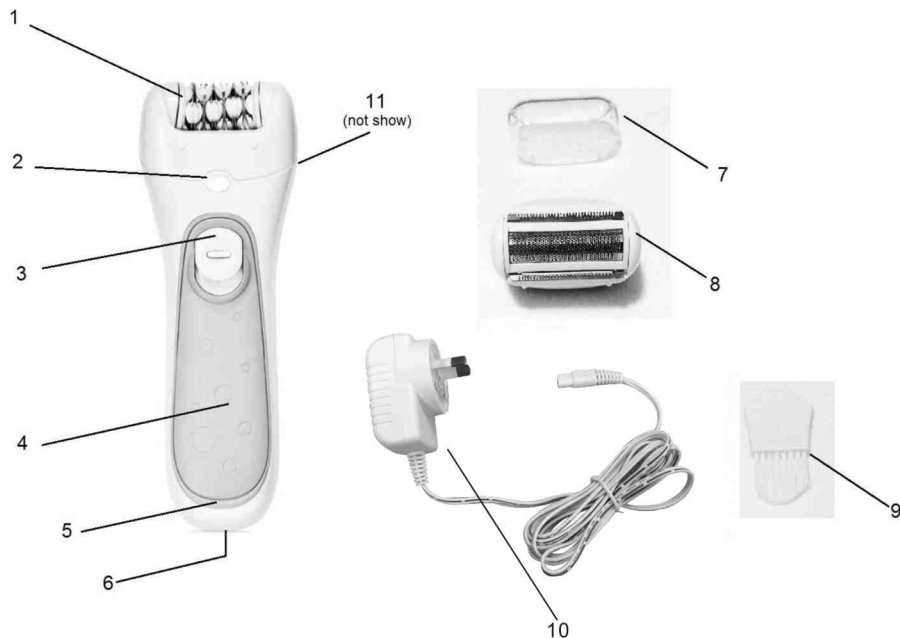
**WARNING: Please use the charger we supplied with the appliance. Other chargers may cause electrical failure and/or fire.**

## INTRODUCTION

This appliance is designed for household use only.

The appliance can be used on 100-240V AC voltage. Before you put the charger into the outlet, make sure the voltage is compatible with the required voltage on the product.

## PARTS



- |                            |                                  |
|----------------------------|----------------------------------|
| 1 Epilator head            | 7 Protective Cover               |
| 2 Light                    | 8 Shaver head                    |
| 3 On/Off switch – 2 speeds | 9 Cleaning brush                 |
| 4 Non-slip grip            | 10 Charger                       |
| 5 Charging indicator       | 11 Head release button (at back) |
| 6 DC jack                  |                                  |

## CHARGING

- Fully charge the appliance before first use.
- Please make sure the power is OFF before charging.
- Charging indicator illustrates **RED** when charging; it turns **GREEN** when battery is fully charged.
- Charging time is approximately 1.5 hour.
- When fully charged epilator works for approximately 40 minutes.
- Charging indicator flashes RED when battery is low. Reconnect the unit to the charger to recharge
- For best performance, always use a fully charged epilator.

**IMPORTANT! Use only with provided charger ZDJ045100AU**

## BATTERY CARE

To ensure maximum life from the batteries in your rechargeable epilator, follow these guidelines:

- Do not recharge the unit between sessions. Wait until the batteries are exhausted before recharging.
- Discharge the batteries completely twice a year (switch ON and run until the shaver stops).
- **IMPORTANT! Do not use the epilator while charging.**
- Do not charge the unit when the temperature is below 0°C or above 40°C
- Avoid recharging the unit in direct sunlight or near a radiating heat source.

## OPERATING INSTRUCTIONS

### EPILATION



#### WARNING:

Switch OFF the device before replacing or changing the attachments



#### CAUTION:

When the epilator is overloaded, when pressed too hard on skin, the charging light will flash RED & GREEN.



#### HELPFUL HINTS

- When using an epilator for the first time, epilate in the evening so that any possible reddening can disappear overnight.
- The optimum length for hair removal is between 2-5mm.
- Take a warm bath or shower before epilating. This will make your skin more pliable.
- To relax the skin, we recommend applying a moisture cream after epilation.