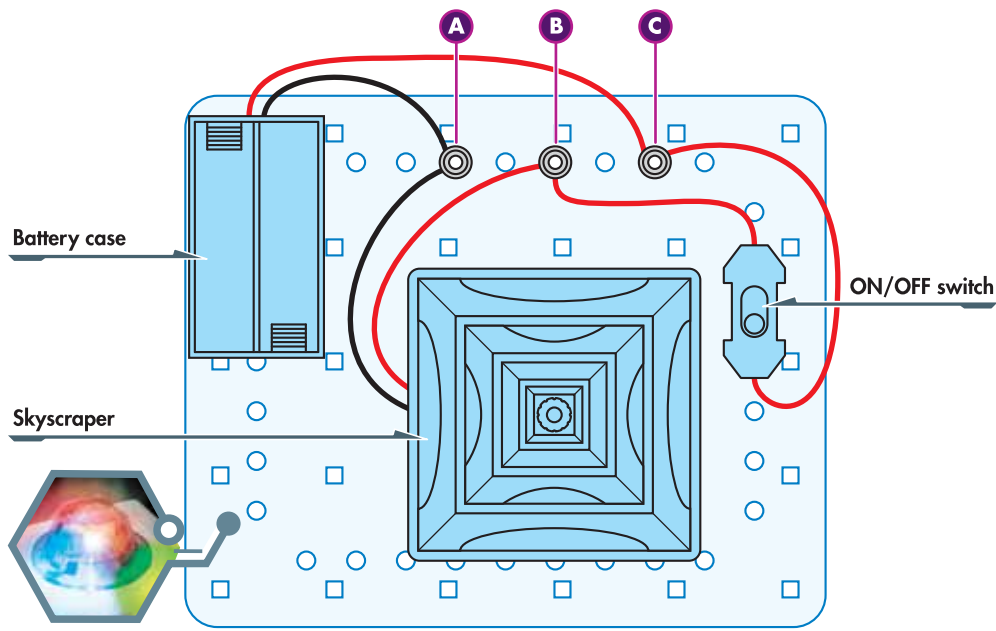
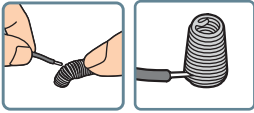


Connecting the Circuit

To provide electrical power for the innovative kit, you will have to connect the electrical circuit.

Insert the battery case, ON/OFF switch and spring connectors onto the base. You can decide which exact position should each component be installed to suit your own construction. Then connect the wires with the springs as below principle diagram shows. To connect, you will have to bend the spring to insert the exposed shiny metal part of the wire into it.



Insert 2 AA batteries into the battery case. When you switch on the ON/OFF switch, the beautiful skyscraper will be flashing with multi-coloured lights from the inside!

Wiring connections	Spring (A)	Spring (B)	Spring (C)
Battery Case	black		red
ON/OFF Switch		red	red
Skyscraper	black	red	

Ensure all wires are correctly connected to the battery terminals and spring connectors as stated wiring sequence and connection. Bend the spring terminal over and insert the exposed shiny conductor part of wire into spring terminal. Make sure the wire is securely connected to spring terminal. If the circuit does not work, you can check the wire and spring terminal connection whether they are not well connected or the insulated plastic part of the wire has been wrongly inserted to spring terminal.

**Warning! Do not short-circuit the battery terminals and spring connectors. Otherwise it may cause overheating.**

Instruction manual

# FLASHING SKYSCRAPER

no. 42476689

## AMAZING INNONEX® SERIES

Welcome to the AMAZING world of the **INNONEX®** series. **INNONEX®** series is a fun combination of science and art in one amazing product. **"You'll be amazed"** to build-your-own innovative kit, then decorate the stylish science piece with eye-catching colours and display the masterpiece project. This creation will surely open the window of learning and creativity that is guaranteed to bring out the artistic talent and gives you the basic scientific insight at the same time.

**Have AMAZING innovative science fun!**

### WARNING

For children over 8 years of age only. For use under adult supervision. Not suitable for children under age 3 years old due to small part(s) and component(s) – CHOKING HAZARD. This toy contains small parts and functional sharp points on components. Keep away from children under 3 years of age. Instructions for parents are included and have to be observed. Do not lock the motor or other moving parts. Otherwise it may cause overheating.

### CAUTION!

Read the instructions before use. Please keep for future reference. When setting up this unit, please double check and make sure all wiring connections you have made are correct before inserting batteries and switching on the unit as failure may result in damage to components of the unit. When the play is finished, make sure the batteries are disconnected and switch off the unit before you clear away the wires. Do not lock the motor or other moving parts. Otherwise it may cause overheating. The toy is not to be connected to more than recommended number of power supplies.

#### BATTERY INFORMATION

Use 2 x AA size batteries (not included).  
For best performance, always use fresh batteries and remove batteries when not in use.  
Batteries must be inserted with the correct polarity.  
Non-rechargeable batteries are not to be recharged.  
Re-chargeable batteries are only to be charged under adult supervision.  
Re-chargeable batteries are to be removed from the toy before being charged.  
Different types of batteries or new and used batteries are not to be mixed. Only batteries of the same or equivalent types are to be used.  
Do not mix old and new batteries ; Do not mix alkaline, carbon zinc and re-chargeable batteries.  
Exhausted batteries are to be removed from the toy.  
The supply terminals are not to be short-circuited.  
Do not dispose of the batteries in fire.

#### GENERAL FIRST AID INFORMATION

In case of skin contact: Wash affected area with plenty of water.  
In case of eye contact: Wash out eye with plenty of water, holding eye open. Seek immediate medical advice.  
In case of doubt seek medical advice without delay. Take the chemical and/or product together with the container with you.  
In case of injury always seek medical advice.  
In case of inhalation: Remove person to fresh air.

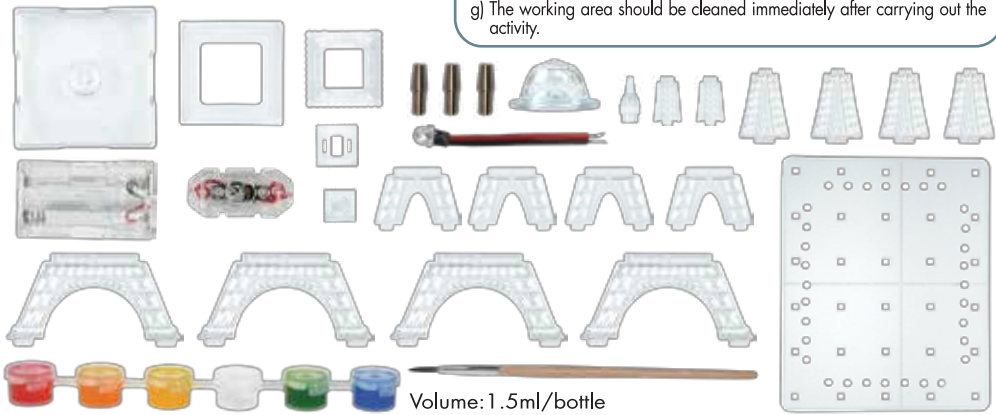
SAFETY RULES

- Keep younger children under the specified age grading and animals away from the activity area.
- Store chemical toys out of reach of young children.
- Wash hands after carrying out activities.
- Clean all equipment after use
- Do not use any equipment which has not been supplied with the set or recommended in the instructions for use.
- Do not eat, drink or smoke in the activity area.
- Do not place the materials in the mouth.
- Do not inhale vapours.
- Do not allow materials to come into contact with the eyes.

ADVICE FOR ADULT SUPERVISION

- This chemical toy is not suitable for children under 8 years. For use under adult supervision. Keep this chemical toy set out of reach of children under 8 years old.
- Read and follow these instructions, the safety rules and the first aid information and keep them for reference.
- Incorrect use of chemicals can injury and damage to health. Only carry out those activities which are listed in the instructions.
- Because children's abilities vary so much, even within age groups, supervising adults should exercise discretion as to which activities are suitable and safe for them. The instructions should enable supervisors to assess any activity to establish its suitability for a particular child.
- The supervising adult should discuss the warnings, safety information and the possible hazards with the child or children before commencing the activities. Particular attention should be paid to the safe handling of alkalies, acids and flammable liquids
- The area surrounding the activity should be kept clear of any obstructions and away from the storage of food. It should be well lit and ventilated and close to a water supply. A solid table with a heat resistant top should be provided.
- The working area should be cleaned immediately after carrying out the activity.

Components



Getting Started

Paint the skyscraper in your own style and create beautiful artwork by yourself. You may assemble the skyscraper first and then paint afterwards, or paint the parts first before assembling. It is entirely up to you. To draw some finer details, it is recommended to best paint first. To draw some big patterns, you will need to assemble first then paint. There is no right or wrong in this. Have fun creating you own skyscraper!

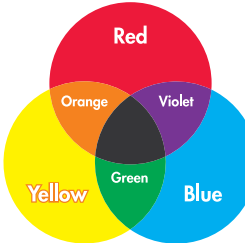


Educational Hints

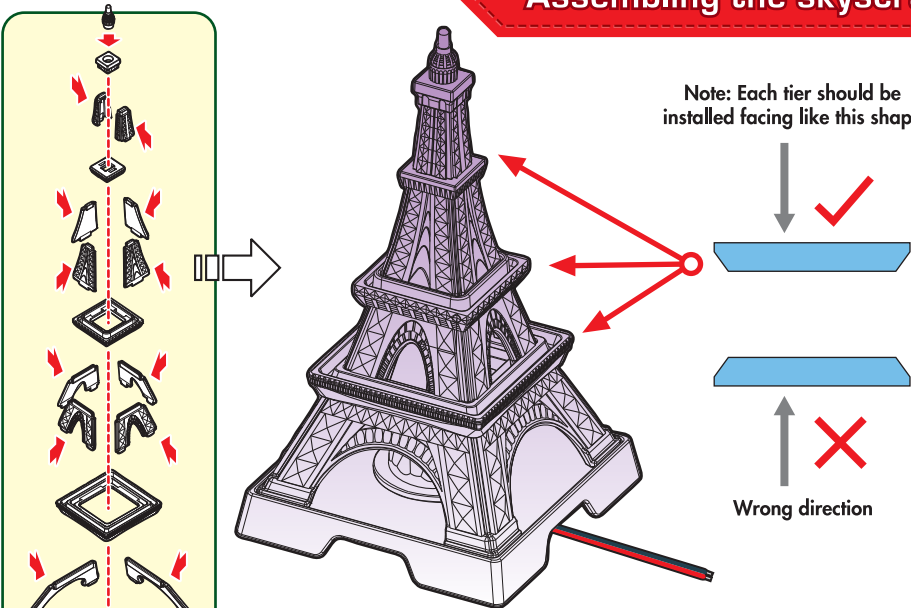


We can mix different colours together to get another colour. For example, mixing yellow and blue paint will make green; Mixing red and yellow paints will get orange. Even though there are only 6 bottles of colour paints, you can actually get more colours by mixing different paints!

There are 3 colours which we call them "PRIMARY COLOURS" because they cannot be made by mixing from other colours. On the contrary, mixing primary colours can come out with many other colours. Traditionally, people refer the 3 primary colours of paints to be **BLUE, RED** and **YELLOW**. By mixing paint of these 3 colours in different proportion, you can get almost all the other colours!



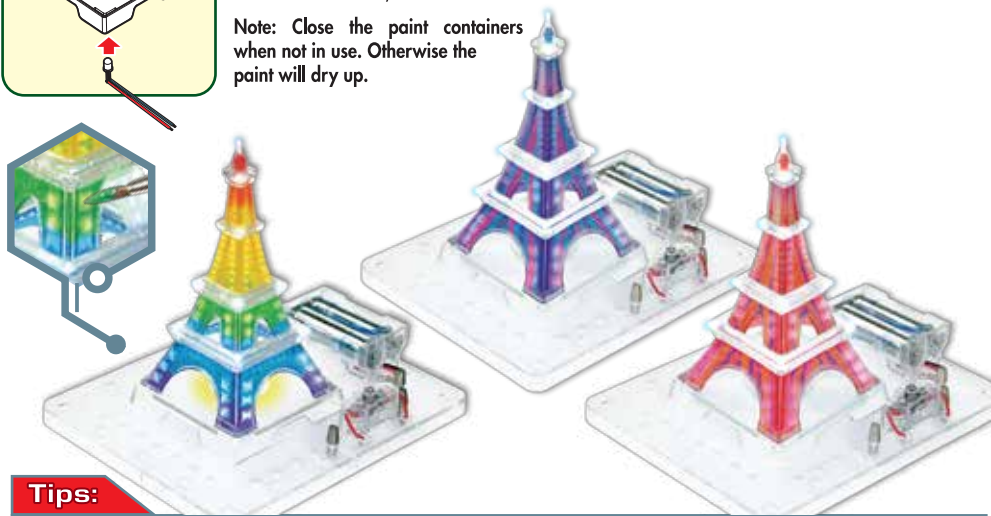
Assembling the skyscraper



Paint Your Own Design!

Before you paint, prepare a cup of water to wash the paint brush. It is recommended to place a table cloth or some paper on the table to keep it clean. To paint, simply dip the paint brush in the paint, and then paint on the parts or on the assembled piece. Painting on the inner surface or outer surface of the skyscraper will have different visual effect. When you want to use another colour, wash the paint brush in the cup of water. Once the paint brush is clean then you can use another colour.

**Note: Close the paint containers when not in use. Otherwise the paint will dry up.**



Tips:

- # If you paint on the parts before you assemble, remember to wait until they are dried before assembling.
- # Avoid rubbing your eyes when painting. When you have finished painting, remember to tidy up and wash your hands.
- # The paint is for plastic or paper use only. Not for use on face or skin.