

anko

Citrus Juicer

J8882N

User Manual



PLEASE READ AND SAVE THESE
INSTRUCTIONS FOR FUTURE REFERENCE

1. Important Safeguards

When using electrical appliances, basic safety precautions should always be followed including the following:

- Read all instructions carefully before you use the appliance.
- Always disconnect the appliance from the supply if it is left unattended and before assembling, disassembling or cleaning.
 - This appliance is not intended for use by persons (including children) with reduced physical, sensory or mental capabilities, or lack of experience and knowledge, unless they have been given supervision or instruction concerning use of the appliance by a person responsible for their safety.
 - Children should be supervised to ensure that they do not play with the appliance.
 - Do not allow children to use the juicer without supervision.
- If the supply cord is damaged, it must be replaced by qualified electrical person in order to avoid a hazard or the product must be disposed.
- This appliance is intended to be used in household and similar applications such as:

- staff kitchen areas in shops, offices and other working environments;

- farm houses;

- by clients in hotels, motels and other residential type environments;

- bed and breakfast type environments.

. Ensure your electricity supply is the same as the one shown on the product rating label before connecting to mains power.

. Do not operate the appliance with a damaged cord or plug or after the appliance malfunctions, or is dropped or damaged in any manner. For electrical safety, any repairs to the product must be carried out by a qualified electrical person only.

WARNING! Electric shock hazard. Never place the electric motor unit in water or other liquid or let the cord or plug get wet.

. Do not operate the Citrus Juicer with wet hands. Make hands dry with cloth before plugging in.

. Take special care when preparing food for babies, the elderly and infirm.

. Do not let the cord hang over edge of the table or counter.

. Never let anybody trip over the power cord and attached cable. Don't let the cord touch hot surfaces or hang down

where a child could grab it.

- . Unplug from outlet when it is not in use, before moving the appliance or adding the food.
- . Do not exceed the quantities and maximum time indicated in the operation guidelines or processing guide.
- . The use of attachments, including canning jars, not recommended by the manufacturer may cause a risk of injury to persons.
- . Avoid contacting moving parts.
- . Keep fingers, hair, clothing and utensils away from moving parts.
- . Do not use outdoors.

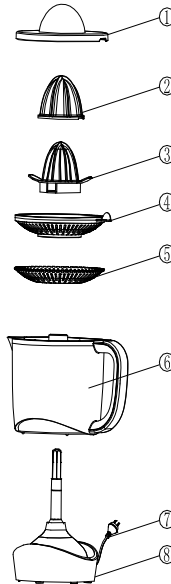
WARNING: Misuse may cause injury.

IMPORTANT! The maximum operating time is 30 seconds. Allow it to rest for 1 minute before using it again. After 5 cycles of operation, allow the electric motor unit to cool down to room temperature for approximate 30 minutes before using it again.

**Save These Instruction
For Household Use Only**

2. Description of Parts

1. Transparent cover
2. Big cone
3. Small cone
4. Filter A
5. Filter B
6. Cup
7. Power cord, plug
8. Motor Unit



3. Operation Guidelines

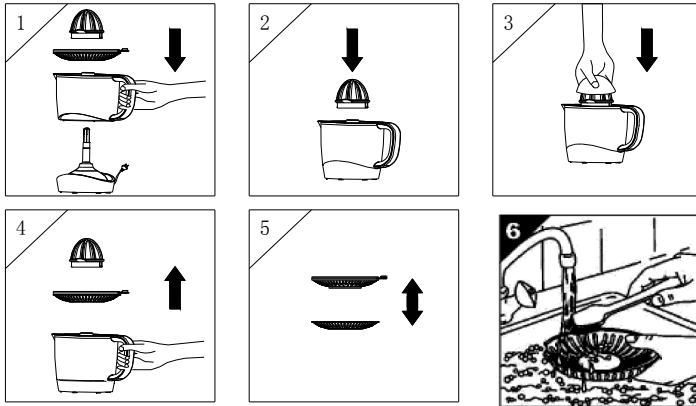
Before using for the first time

1. Remove all packaging.

How to use the juicer

1. Put the cup (6) on the motor unit (8), (Fig1), align the arrows on the cup and motor unit to-lock into place.
2. Put the filter A (4) on the filter B (5), turn it left and right to make it in position. Put the small cone (3) on the shaft of the motor unit (Fig2).
3. Connect the appliance to mains power.
4. Cut the orange into 2 pieces of equal size.
5. Press gently each half of the orange on the cone. The citrus press will start operating automatically by turning to the right and to the left (Fig3). If the orange is too big, please use the big cone. Put the big cone on the small one, the 2 gaps on the big cone must be locked on the 2 wings on the small cone.

6. Now you can enjoy the delicious juice.
7. When finished using, unplug the juicer from mains power, remove the cone, filter A and filter B (Fig4). Wash them thoroughly with water (Fig5-6), dry them with a cloth, and store in the box.



IMPORTANT! The maximum operating time is 30 seconds. Allow it to rest for 1 minute before using it again. After 5 cycles of operation, allow the electric motor unit to cool down to room temperature for approximate 30 minutes before using it again.

4. Care and cleaning

- . Always switch off and unplug before cleaning.
- . Take the attachments off.
- . Wash the attachments thoroughly with warm water dry them with a cloth, and store in the box.

IMPORTANT! Never place the electric motor unit in water or other liquid or let the cord or plug get wet.

The motor unit and power cord

- . Wipe with a damp cloth and then dry it.
- . **Never immerse in water or other liquid or use abrasives.**

Storage

- . Store it in a cool, dry and ventilating place.
- . Keep away from children.

5. Technical specification

Voltage: 220-240V~ 50Hz

Power: 30W

12 Month Warranty

Thank you for your purchase from Kmart.

Kmart Australia Ltd warrants your new product to be free from defects in materials and workmanship for the period stated above, from the date of purchase, provided that the product is used in accordance with accompanying recommendations or instructions where provided. This warranty is in addition to your rights under the Australian Consumer Law.

Kmart will provide you with your choice of a refund, repair or exchange (where possible) for this product if it becomes defective within the warranty period. Kmart will bear the reasonable expense of claiming the warranty. This warranty will no longer apply where the defect is a result of alteration, accident, misuse, abuse or neglect.

Please retain your receipt as proof of purchase and contact our Customer Service Centre on 1800 124 125 (Australia) or 0800 945 995 (New Zealand) or alternatively, via Customer Help at Kmart.com.au for any difficulties with your product. Warranty claims and claims for expense incurred in returning this product can be addressed to our Customer Service Centre at 690 Springvale Rd, Mulgrave Vic 3170.

Our goods come with guarantees that cannot be excluded under the Australian Consumer Law. You are entitled to a replacement or refund for a major failure and compensation for any other reasonably foreseeable loss or damage. You are also entitled to have the goods repaired or replaced if the goods fail to be of acceptable quality and the failure does not amount to a major failure.

For New Zealand customers, this warranty is in addition to statutory rights observed under New Zealand legislation.