

anko

**Head Shaver
AD-1061
Instruction Manual**



**PLEASE READ AND SAVE THESE
INSTRUCTIONS FOR FUTURE REFERENCE**

IMPORTANT SAFETYGUARDS

PLEASE READ CAREFULLY BEFORE USING THIS APPLIANCE

Please follow all the precautions listed below for safety and to reduce the risk of injury or electric shock.



WARNING: READ ALL INSTRUCTIONS, FAILURE TO FOLLOW ALL INSTRUCTIONS LISTED BELOW MAY RESULT IN ELECTRIC SHOCK, OR SERIOUS PERSONAL INJURY.

1. Only use the appliance as described in this manual.
2. Do not immerse the appliance in water or any other liquid, product is splash-proof only.
3. Do not allow the appliance to be exposed to rain or moisture during use or storage.
4. Always check the appliance for damage prior to use. If any damage is observed, do not use the appliance.
5. The appliance is intended for indoor use only.
6. Always switch the appliance off after use.
7. This appliance has no user serviceable parts. Do not attempt to access the appliance covers.
8. This appliance is for personal use only, not designed for commercial use.
9. Do not use it outdoors.
10. Do not use the appliance if it is not working properly, if it has been dropped or if it has been immersed in any liquid.
11. Before using the appliance, ensure that the rotary head is securely fitted.
12. Do not use the appliance on children.
13. The appliance is not to be used by persons (including children) with reduced physical, sensory or mental capabilities, or lack of experience and knowledge, unless they have been given supervision or instruction concerning use of the appliance by a person responsible for their safety.
14. Children being supervised to ensure that they do not play with the appliance.
15. Only charge the appliance with the USB cable that was supplied with the appliance.
16. Only Charge the appliance with Extra Low Voltage Battery Charger (not supplied) with an output rating 5Vd.c. 1A, same as indicated on the appliance's rating label.
17. When charging the appliance, make sure it is switched OFF.
18. Check that your supply voltage is the same as that stated on the charger.
19. When charging the appliance, the power switch must be off.
20. Use only attachments provided.
21. This product contains sharp blades, please take utmost care during handling and use.
22. Do not replace the batteries with non-rechargeable batteries.
23. Please put the protective cap on the shaver every time to prevent damage on the rotary head. To avoid personal injury, do not use the shaver if it has a damaged rotary head or inner cutter.
24. Detach the shave head for cleaning.
25. Do not use salt water or boiling water. Also, do not use cleaning products that are designed for toilets, bathrooms or kitchen appliances



WARNING: Do not recharge non-rechargeable batteries.



WARNING: Before charging the product, please make sure your hands are dry.



WARNING: Only use the USB charging cable supplied with the appliance. Use of other cable may cause electrical failure and/or fire.

PERSONAL SAFETY

- Never use the appliance on any part of the body other than shaving the face and beard.
- **CAUTION! Do not use the appliance if the rotary head is split or broken.**
- Never leave the appliance unattended while switched ON.
- Do not touch the blades as they are very sharp.
- Always ensure that the hands are dry before operating or when switching it ON or OFF.



WARNING

Only use the USB cable that was supplied with this Appliance.

Consumers are cautioned against trying to replace the battery. Using and/or purchasing counterfeit and/or inferior quality batteries have the potential to cause fire, personal injury, and/or damage to property. These batteries are typically found on online-auction websites or from other retailers and are known to pose a potential safety risk.

Never try to charge non-rechargeable batteries as they may explode or catch on fire or cause personal injury and/or damage to property.

- Batteries may explode if disposed of in fire.
- The battery is not replaceable. Do Not open the appliance.
- Do not use or store in temperatures above 40°C.



At the end of the appliance's life, it must be disposed of correctly.

Contact your local waste management authority for more information on Battery Recycling and disposal regulations in your area.

Do not dispose of electrical appliances or batteries as unsorted municipal waste, use separate collection facilities. Contact your local council for information regarding the collection systems available. If electrical appliances are disposed of in landfills or dumps, hazardous substances can leak into the groundwater and get into the food chain, damaging your health and well-being. Please contact your local council or regional authority for more information on the collection, reuse, and recycling programmes.

Read and Save These Instructions

PARTS



1. Rotary head assembly
2. On/Off switch
3. LED display
4. Charging port

5. Protection cover
6. Cleaning brush
7. USB charging cable

CHARGING

IMPORTANT: This Appliance contains a built-in lithium-ion battery which must only be charged using the supplied USB cable.

Always switch off and unplug the USB cable when charging is completed or when not in use.

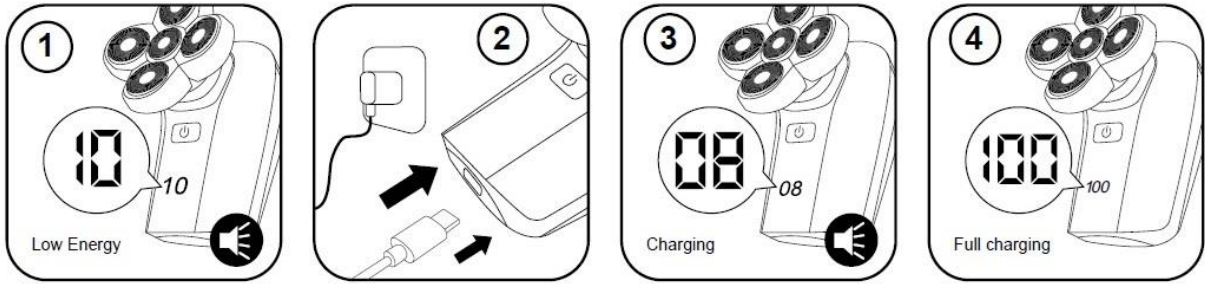
DO NOT allow to charge for more than 2.5 hours.

Normal charge takes approximately 2 hours.

If any abnormality occurs during charging, (such as burning smell or excessive heat or even a strange sound) immediately turn off the charger and disconnect the USB cable.

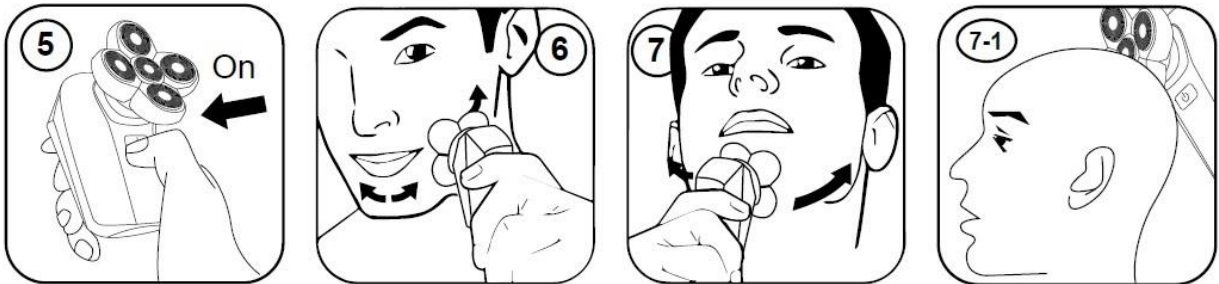
IMPORTANT: The Appliance must be fully charged before first use.

- Take the USB Cable and fully unravel it before using it to charge the Appliance.
- Plug the small end of the USB cable directly into the bottom of the appliance.
- Plug the large end of the USB cable into your 5Vd.c. 1A USB charger (not supplied) and switch on.
- Whilst charging, the display will illuminate with scrolling numbers where the numbers increase as the battery charges, indicating the percentage of charge.
- When display show "10%" with Charging indicator flashing, this indicate low battery and remind user to charge the shaver.
- When fully charged, the display will show "100%".
- Unplug the USB charging cable from the appliance.



OPERATING INSTRUCTIONS

1. Remove the protective cap.
2. Press the On/Off button (Refer Fig.5)
3. Ensure your hair is clean and dry, lightly press the blades against your face, neck or scalp. Move the shaver quickly over your skin and against the growing direction of beard. Make both straight and circular movements. (Refer Fig.6, 7 and 7-1).
4. Press the On/Off button again to turn OFF the shaver.
5. Put the protective cap on the shaver every time after use to prevent damage.



IMPORTANT:

Do not attempt to shave hair that is longer than a few days growth or 2mm in length as head-shaving is designed to maintain the shaved appearance and this look can be achieved by daily use if desired.

This shaver cannot shave long hair down to the scalp. If your hair is longer than 2mm, you should use a hair trimmer first to cut the hair down to 2mm in length or shorter, and then use the shaver to finish off.

Travel lock

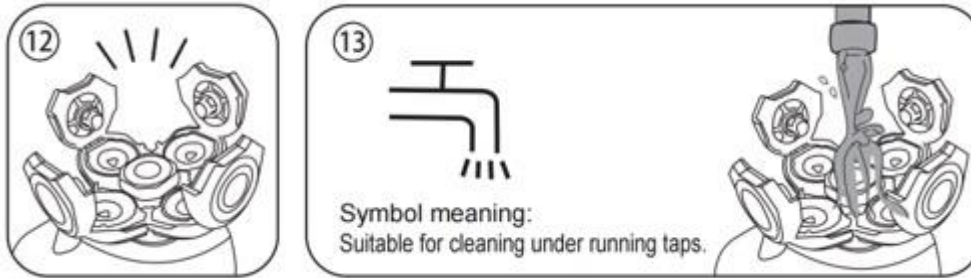
1. To lock: Press and hold the On/Off switch for 3 seconds then release. The "Travel Lock" indicator will illuminate to tell the lock is activated.
2. To unlock: Press and hold the On/Off switch for 3 seconds. The display will count down from 3-2-1 and will unlock and turn the shaver on. At this time, release the On/Off button.



CLEANING AND MAINTENANCE

To ensure optimal shaving efficiency, the shaver must be cleaned regularly.

- Make sure to switch OFF the shaver and it is disconnected from mains power before cleaning.
- Grasp the sides of shaving head, pull to detach the shaving head.
- Pry open each blade sections to expose the inner cutting blade. For center blade section, rotate anticlockwise to unclip, then lift up and away. (Refer to Fig.12)
- Brush out the cut hair with small cleaning brush supplied and then rinse the blade sections, including inner cutting blade, until the cut hairs have been washed away. (Refer Fig. 13)



- Carefully shake off excess water and allow all the parts to dry thoroughly.
- Reassemble the rotary head in reverse order.

WARNING! Never dry the shaving unit with a towel or tissue, as this may damage the parts.

Lubrications:

- The head shaver will need periodic lubrication to allow the blades to run smoothly.
- Using only light-grade oils (e.g. sewing machine oil), simply spread 1-2 drops lightly over cutters with fingertip. Wipe away any excess.
- Do not use hair oil, grease, or any oil mixed with kerosene or solvent.

STORAGE

- Switch the shaver OFF and clean all components. Make sure that all parts are dry before you pack them up.
- Fit the plastic Protection Cover to prevent damage.
- Store the shaver in a clean, dry area.
- Make sure that the shaver and the accessories are out of the reach of children and animals.

TECHNICAL SPECIFICATIONS

Working time	Approx. 1 hour
Charging time	Approx. 2 hours
Input voltage	5Vd.c. 1.0A
Battery type	Li-ion, 600mAh, 3.7V x1 cell
Water resistance	IPX6

12 Month Warranty

Thank you for your purchase.

Your new product is warrantied to be free from defects in materials and workmanship for the period stated above, from the date of purchase, provided that the product is used in accordance with accompanying recommendations or instructions where provided. This warranty is in addition to your rights under the Australian Consumer Law.

For New Zealand customers, this warranty is in addition to statutory rights observed under New Zealand legislation.

We will provide you with your choice of a refund, repair (where possible) or exchange (availability dependent) for this product if it becomes defective within the warranty period. The business will bear the reasonable expense of claiming the warranty.

This warranty will no longer apply where the defect is a result of alteration, accident, misuse, abuse or neglect.

Please retain your receipt as proof of purchase and contact our Customer Service Centre as listed below, for the entity you purchased this product from, for any difficulties with your product. Warranty claims and claims for expense incurred in returning this product can be addressed to the respective Customer Service Centre.

Our goods come with guarantees that cannot be excluded under the Australian Consumer Law. You are entitled to a replacement or refund for a major failure and compensation for any other reasonably foreseeable loss or damage. You are also entitled to have the goods repaired or replaced if the goods fail to be of acceptable quality and the failure does not amount to a major failure.

Contact for Kmart purchases	Contact for Target purchases
Kmart Australia Ltd. C/- Customer Service Centre 690 Springvale Road, Mulgrave Vic 3170 Customer Service: 1800 124 125 (Australia) or 0800 945 995 (New Zealand) or via Customer Help at kmart.com.au	Target Australia Pty Ltd C/- Customer Service Centre 2 Kendall Street, Williams Landing, Vic, 3027 Customer Service: 1300 753 567 or via Customer Help at target.com.au/help/contact-us