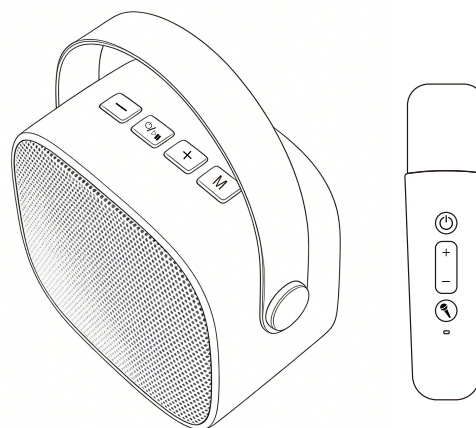


# anko

## 5W Portable Mini Karaoke Speaker User Manual

### Include:

- › Speaker with 1 microphone
- › Charging cable
- › User manual



K: 43-732-661 | T: 72-536-803  
Model No.: SP535

Please read the instruction manual before using this product and retain the instructions for future use.

## 12 month warranty

Thank you for your purchase.

This product is warranted to be free from defects in materials and workmanship for the period stated above, from the date of purchase, provided that the product is used in accordance with accompanying recommendations or instructions where provided. This warranty is in addition to your rights under the Australian Consumer Law. For New Zealand customers, this warranty is in addition to statutory rights observed under New Zealand legislation.

We will provide you with your choice of a refund, repair (where possible) or exchange (availability dependent) for this product if it becomes defective within the warranty period. The business will bear the reasonable expense of claiming the warranty. This warranty will no longer apply where the defect is a result of alteration, accident, misuse, abuse or neglect.

Please retain your receipt as proof of purchase and contact our Customer Service Centre as listed below, for the entity you purchased this product from, for any difficulties with your product. Warranty claims and claims for expense incurred in returning this product can be addressed to the respective Customer Service Centre.

Our goods come with guarantees that cannot be excluded under the Australian Consumer Law. You are entitled to a replacement or refund for a major failure and compensation for any other reasonably foreseeable loss or damage. You are also entitled to have the goods repaired or replaced if the goods fail to be of acceptable quality and the failure does not amount to a major failure.

### MADE IN CHINA

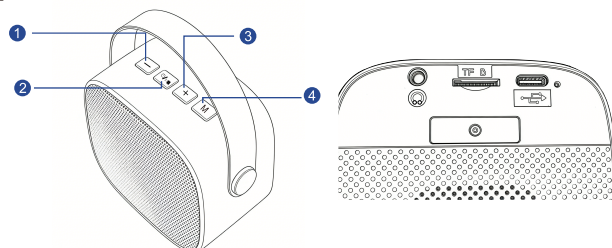
### CUSTOMER SERVICE:

KMART AU: 1800 124 125  
KMART NZ: 0800 945 995  
TARGET AU: 1300 753 567

### WARNING:

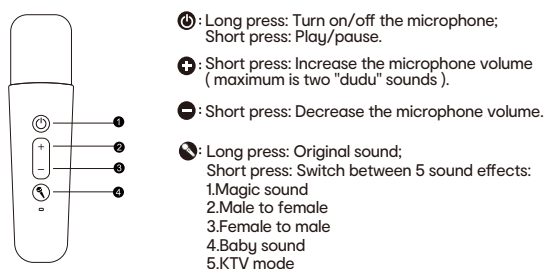
- This product shall not be connected to power supply source exceeding PS1 (5V d.c. 1A).
- The marking located on the bottom of charging unit.
- Danger of explosion if battery is incorrectly replaced. Replace only with the same or equivalent type.
- Battery cannot be subjected to high or low extreme temperatures, low air pressure at high altitude during use, storage or transportation.
- Replacement of a battery with an incorrect type that can result in an explosion or the leakage of flammable liquid or gas.
- Disposal of a battery into fire or a hot oven, or mechanically crushing or cutting of a battery, that can result in an explosion.
- Leaving a battery in an extremely high temperature surrounding environment that can result in an explosion or the leakage of flammable liquid or gas.
- A battery subjected to extremely low air pressure that may result in an explosion or the leakage of flammable liquid or gas.
- Please note the product working temperature is 0-40°C.

## Speaker button functions:



|   |   |   |    |   |
|---|---|---|----|---|
| 1 | — | Short press: Reduce the speaker volume ;<br>Long press: Switch to the previous song.                                    |    | Need a 3.5mm audio cable to connect other devices like mobile phone, MP3.   |
| 2 |   | Short press: Play/pause;<br>Long press: Power on/off.   | TF | TF card insertion port, supports MP3 format audio.  |
| 3 | + | Short press: Increase the speaker volume (with a maximum of two "dudu" sounds);<br>Long press: Switch to the next song. |    | Use included Type-C charging cable and 5V /1A charger (not include). During charging, the indicator light above the port is red, it'll turn off when fully charged. |
| 4 | M | Short press to switch modes;<br>Long press: Eliminate the original sound.   |    |   |

## Microphone button functions:



- 1. : Long press: Turn on/off the microphone;  
Short press: Play/pause.
- 2. : Short press: Increase the microphone volume (maximum is two "dudu" sounds).
- 3. : Short press: Decrease the microphone volume.
- 4. : Long press: Original sound;  
Short press: Switch between 5 sound effects:  
1.Magic sound  
2.Male to female  
3.Female to male  
4.Baby sound  
5.KTV mode

## Pairing the speaker with Bluetooth® devices

- ◆ Go to "Bluetooth Settings" on your Bluetooth device (phone, tablet, etc.)
- ◆ Turn the Bluetooth ON at your device, turn on the speaker
- ◆ On your Bluetooth Device, select the pairing name **anko43732661** on the list of available devices, when the prompt tone alerts, it means bluetooth connection is successful.

### Battery Charging

When using for the first time, charge the battery to maximum capacity. To recharge, plug the Type-C charging cable into the charging port. Red LED lights up indicates that charging is in progress. When red light turns off, charge is completed. When the speaker is in low battery status, it announces "dudu".

### Led light indicator

- ◆ Speaker not paired: Blue indicator flashes quickly.
- ◆ Pairing successful: Blue indicator light is always on.
- ◆ Playing music: Blue indicator flashes slowly.
- ◆ Speaker enters the charging state: the red light is always on.
- ◆ Charging completed: red light turn off.

### Technical specification:

**Battery capacity :** 1200mAh(speaker)  
300mAh(microphone)  
**Charging time :** approx 2 hours  
**Impedance :** 4Ω  
**Frequency response :** 20Hz-20KHz  
**Working distance :** 10 meters  
**Rated output power :** 5W max  
**Rated input :** 5V 1A  
**Charging port :** Type-C  
**Unit driver :** 58mm  
**Music time :** up to 14 Hours at 80% volume

The Bluetooth® word mark and logos are registered trademarks owned by Bluetooth® SIG, Inc., and any use of such marks by KMART AUSTRALIA is under license