

## INSTRUCTION MANUAL

**PRODUCT NAME: VACUUM CUPPING DEVICE**  
**MODEL NO.: 43722969**  
**RATE VOLTAGE: 5V = 2A**  
**BATTERY: LITHIUM-ION, 1X800mAh**  
**CHARGING TIME: 2 HOURS**  
**CHARGE: WITH 0.75M TYPE-C CHARGING CABLE**  
**APPLICATION AREAS: BACK AND LIMBS ONLY**

### **⚠ Warnings & Precautions**

- 1. Use this product strictly according to this manual.**
- 2. Ensure the suction cup is fully sealed against the skin, avoid wounds and scars.**
- 3. Prolonged use on the same area may cause skin irritation or low-temperature burns.**
- 4. Discontinue use immediately if discomfort occurs and consult a physician.**
- 5. This product is intended for single-user use only.**
- 6. Do not use a damaged or cracked transparent cup.**
- 7. Remove the device immediately if any abnormal condition occurs.**
- 8. Do not use while driving.**
- 9. Do not plug or unplug the charging cable with wet hands.**
- 10. This product contains a lithium battery. Do not disassemble, immerse in water, or dispose of in fire.**
- 11. After use, allow the body to rest for 45 minutes before bathing.**
- 12. This appliance is not intended for use by persons (including children) with reduced physical, sensory or mental capabilities, or lack of experience and knowledge, unless they have been given supervision or instruction concerning use of the appliance by a person responsible for their safety.**
- 13. Children should be supervised to ensure that they do not play with the appliance.**
- 14. It must only be supplied at safety extra low voltage corresponding to the marking on the appliance**

## 1. Product Overview

This product is a portable VACUUM CUPPING DEVICE and heating massage designed to provide muscle relaxation and comfort through negative pressure suction and heat therapy.

⚠ **This device is intended for personal wellness use only and is not a medical device.**

## 2. Before Use

**Please read this manual carefully before using the product.**

1. Do not use this product if you do not meet the conditions listed in the Safety Instructions section.
2. For improved comfort, clean and moisturize the skin with wet wipes, lotion, or spray before use.
3. Securely attach and tighten the suction cup before operation. Clean the cup before and after each use.
4. Ensure the device is complete and functioning normally.
5. This product is only suitable for the back and limbs. Do not use on other body parts.
6. The device is initially set at Level 3, with a maximum level of Level 6. It is recommended that users start from Level 1 and gradually adjust to find the most suitable level based on their comfort.
7. For hard-to-reach areas such as the back, please use the product with the assistance of another person.
8. The device will automatically shut off after 3 minutes based on the last selected setting, and the suction will gradually decrease. Please ensure the device remains securely attached to the skin to prevent it from falling off, which may cause damage.
9. After the device automatically shuts off after 3 minutes, please power it on again if you wish to continue use, and adjust to your desired level.
10. Redness or mild bruising after use is normal and Surface heating during prolonged operation is normal. ( See below images for example )



### 3. What's inside the kit :

- 1 x Cupping Device
- 2 x Foam Filter Ring
- 1 x Type-C Charging Cable
- 1 x User's Manual



### 3.1 Button Functions :



### 3.1 Power on/off Button

3.1.1 Power On: Press and hold for 1.5 seconds. The indicator light will turn on (Blue light: power level, Red light: Temperature).



3.1.2 Power Off: Press and hold for 1.5 seconds until the indicator lights turn off.

### 3.2 Suction Settings Button

3.2.1 Default suction level is Level 3 with the top blue light on.

3.2.2 Short press to adjust temperature.

3.3.3 Each press increases the level by one.

3.3.4 The device is initially set at Level 3, with a maximum level of Level 6. It is recommended that users start from Level 1 and gradually adjust to find the most suitable level based on their comfort.



**LEVEL 1**



**LEVEL 2**



**LEVEL 3**



**LEVEL 4**



**LEVEL 5**



**LEVEL 6**

### **3.3 Heating Settings Button**

3.3.1 Default temperature is Level 3 with the bottom red light on.

3.3.2 The device is initially set at Level 3, with a maximum level of Level 6. It is recommended that users start from Level 1 and gradually adjust to find the most suitable level based on their comfort.

3.3.3 Short press to adjust temperature.

3.3.4 When maximum level is reached, short press again to turn heating off.



**LEVEL 1**



**LEVEL 2**



**LEVEL 3**



**LEVEL 4**



**LEVEL 5**



**LEVEL 6**

### 3.4 One-Button Suction Release

- 3.4.1 Short press to immediately stop suction and release pressure for safe removal of the device.
- 3.4.2 If the device runs out of power during use, press the skin around the transparent cup with your thumb to allow air to enter the cup. This will quickly release the vacuum so the device can be removed from the skin.



#### **⚠ WARNING:**

**Please Always use the ONE-BUTTON SUCTION RELEASE function when removing the device from skin. DO NOT pull directly off skin.**

### 3.5 If Using Essential Oils

- 3.5.1 When using this device with liquid accessories such as essential oils, please ensure the oil is evenly applied to the skin and that no visible liquid remains on the surface before attaching the device to the desired area.
- 3.5.2 The device is designed with a built-in filtration system that can filter out most particulate and liquid impurities during use, helping to keep the internal components clean. Based on your frequency of use, please inspect and replace the foam filter ring regularly.
- 3.5.3 How to Replace the Filter



## 4. INSTRUCTIONS FOR USE

### CHARGING THE UNIT

- a. When you need to charge the unit, plug the USB cord (included) into a charging block (not included) and plug into a power outlet.
- b. The power button will flash while the unit is charging and will become solid when fully charged.

**NOTE:** The unit cannot be used while charging.

- c. The charging time is approximately 2 hours.

**NOTE:** Recharge only with the Type-C Charging cord provided with the unit. Use a AC Adapter that is suitable to provide the required Input Voltage and minimum input current. Use of any other cord or incompatible AC Adapter may damage the product and may increase risk of harm to user or property. Use only an Australian/NZ approved charging power supply.

## 5. Safety Instructions

### **DANGER** – Prohibited Use

Do NOT use this product if you have: - Implanted medical electronic devices (e.g. pacemakers) - Life-support medical equipment - Medical monitoring equipment (e.g. ECG devices) - Other implanted medical devices

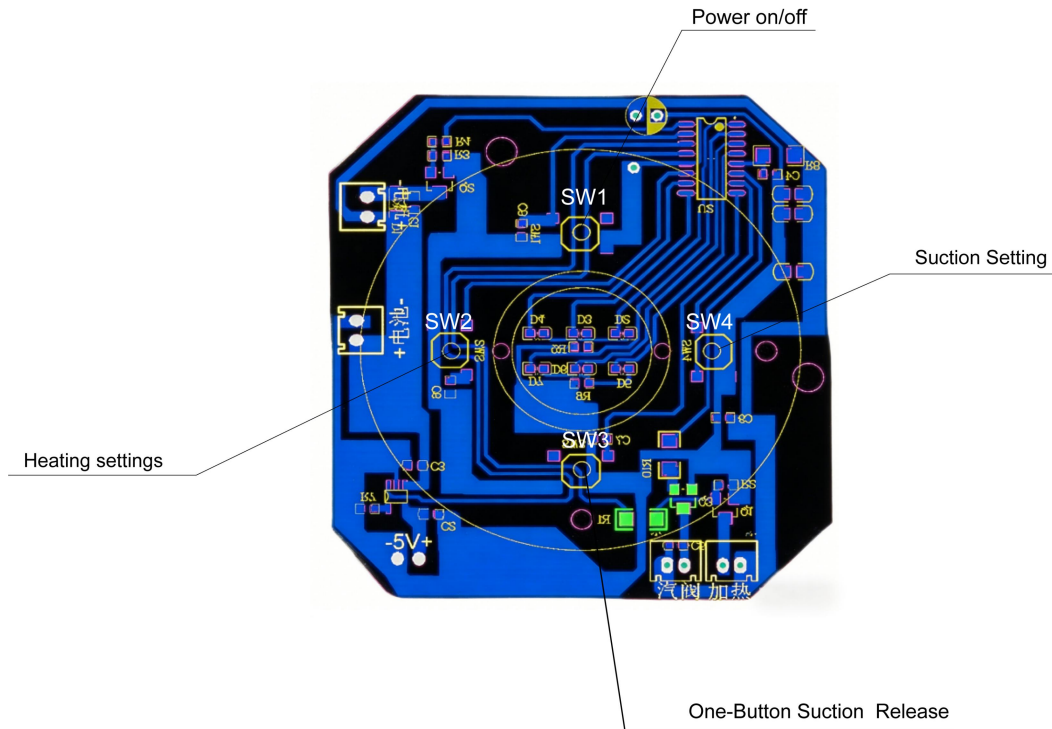
Do NOT use this product if you are: 1. Pregnant, menstruating, have broken skin, varicose veins, or are taking medication 2. Suffering from infectious diseases, sensitive skin conditions, post-surgery recovery, high fever, or serious illness 3. Diagnosed with malignant tumors, fractures, open wounds, ulcers, acute inflammation, or loss of skin elasticity 4. Experiencing heart, brain, or blood pressure disorders 5. Prone to convulsions, spasms, or severe nervous conditions 6. Diagnosed with bleeding disorders (e.g. hemophilia, leukemia, thrombocytopenia) 7. Applying near the heart, face, sensory organs, intimate areas, or major blood vessels 8. Experiencing impaired skin sensation or abnormal skin conditions 9. Under medical treatment or feeling physically unwell 10. Extremely fatigued, intoxicated, sleep-deprived, or within 2 hours before/after meals 11. Allergic to metal or red light 12. Children or individuals unable to operate the device safely

## 7. Cleaning & Maintenance

1. Wipe the main unit with a dry, soft cloth. Do not use corrosive or solvent-based cleaners.
2. Power off before cleaning. Clean the transparent cup with wet wipes after each use.
3. Store in a dry, safe place.
4. Do not store the device while wet.
5. Do not scrub with hard brushes or steel wool.
6. Do not rinse or flush the device by suctioning water into it.
7. Recharge periodically if the device is unused for long periods.
8. Do not use or store in environments with vibration, direct sunlight, high temperature, humidity, water exposure, strong electromagnetic fields, near fire sources, or within reach of children.

### 3. 5 Others:

If the device is accidentally dropped and comes apart, please reassemble it correctly.



**Note:** Please ensure the device is securely positioned during use to prevent it from falling, which may result in damage or malfunction.