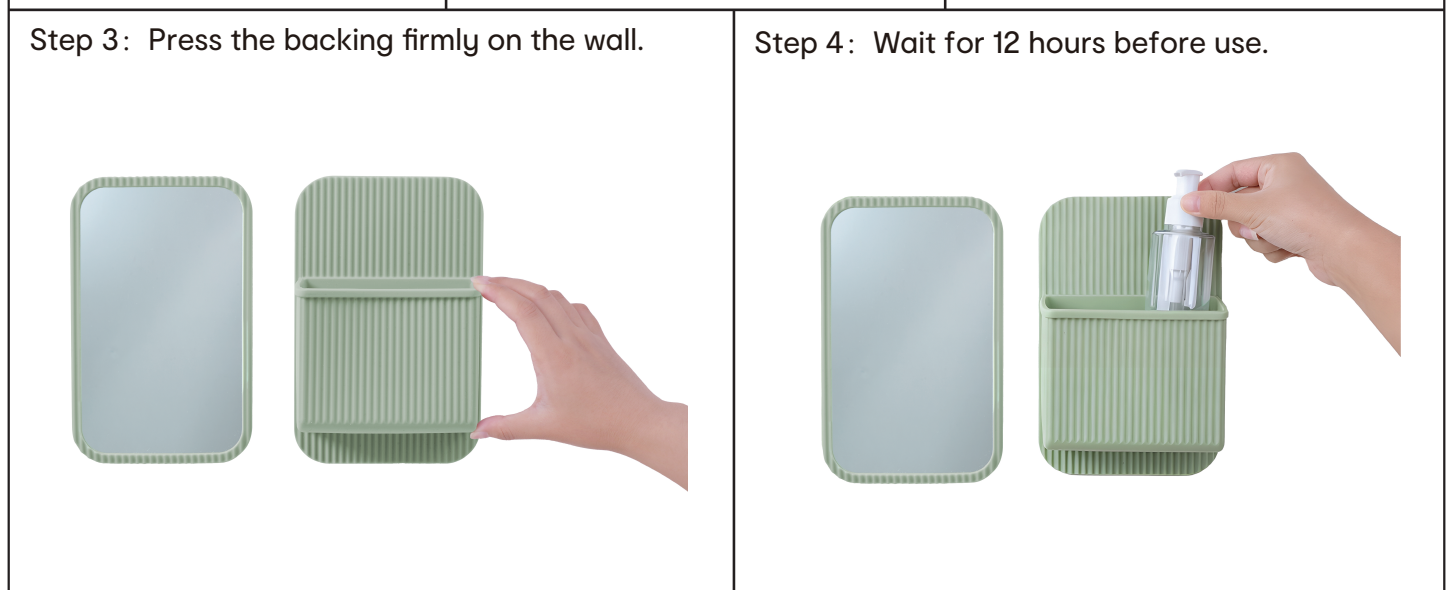
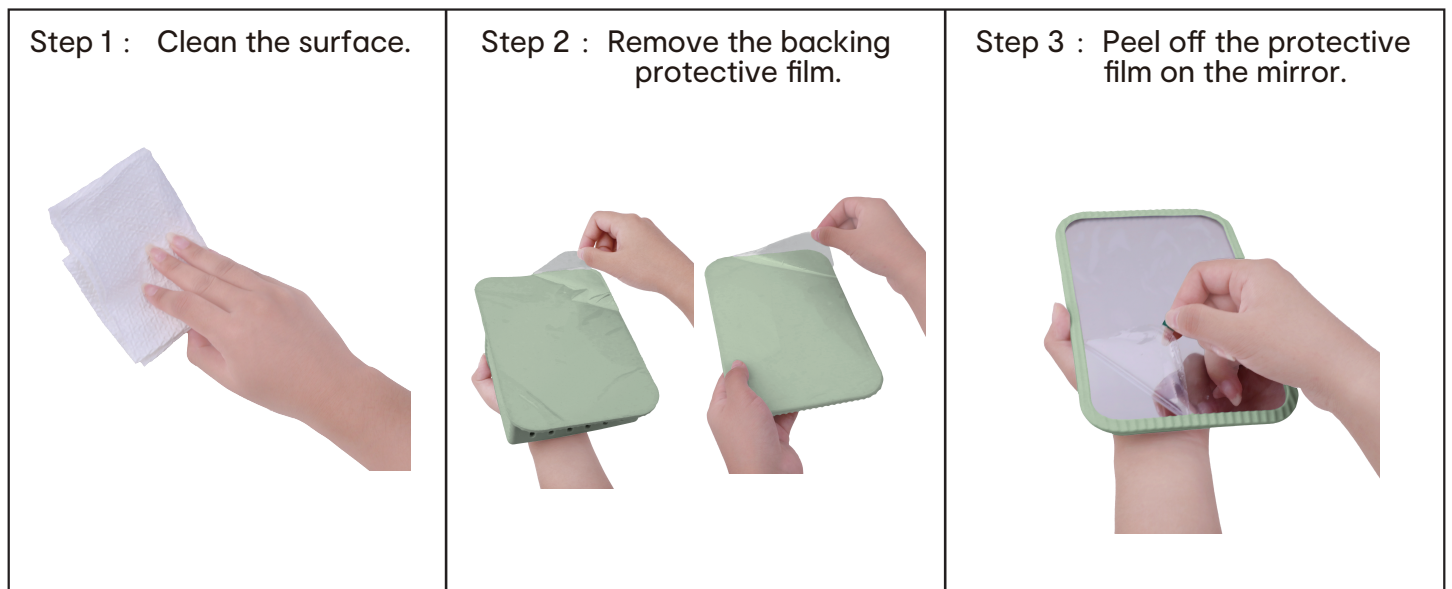
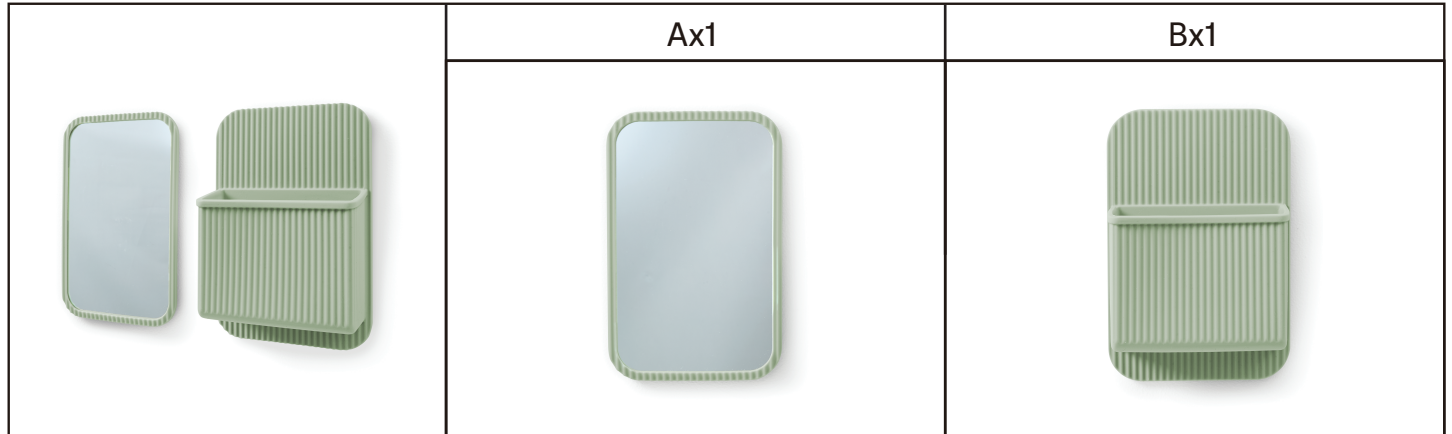


Assembly Instructions

K: 43708130 | T: 72429990 Silicon Shower Accessory Set

ATTACHMENT INSTRUCTION: Suitable for Smooth tile, shiny marble, glass, or mirrors. Not suitable for: Timber/wood, matte textured tiles, undulated tiles, leather, painted or unpainted drywall/plasterboard, over grout lines, or mosaic tiles.

Thoroughly clean the surface and allow it to dry. Peel off the backing film and the film on the surface of the mirror. Carefully stick the product to the surface, ensuring it is level. Press firmly for 30 seconds and wait 12 hours before use.



REMOVAL: Can be removed completely without leaving any residue on the surface.