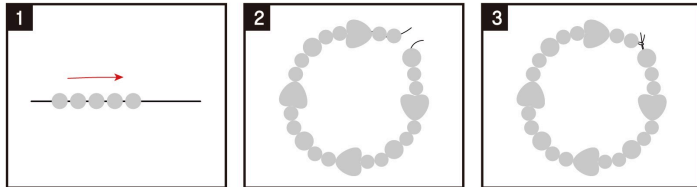


anko

# Charm & Style Accessories Studio

6+ years

How to make bead bracelets:



1 Thread the coloured beads you like onto the elastic.

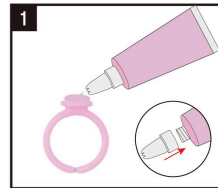
2 Add decorations during the process of beading the bracelets.

3 After the bracelet has reached a suitable length, tie a knot.



anko

How to make a ring



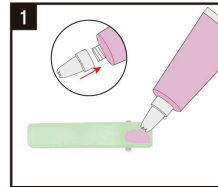
1 Choose a ring you like and squeeze the whipped cream glue onto the ring.



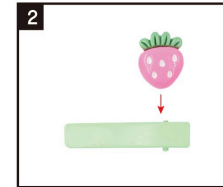
2 Choose a charm you like to decorate with. The setting time is about 24 hours.



How to make a hair clip



1 Choose a hair clip you like and squeeze the whipped cream glue onto the hair clip.



2 Choose a charm you like to decorate with. The setting time is about 24 hours.



**ATTENTION:** ALL ART MATERIALS LIKE WHIPPED CREAM GLUE, MAY CAUSE STAINS. ALWAYS PROTECT CLOTHES, CARPETS, WORK SURFACES, FURNITURE AND OTHER OBJECTS. ALWAYS USE A PROTECTIVE COVER TO PREVENT STAINS. AVOID INGESTION AND EYE CONTACT. WASH HANDS AFTER USE.

**WARNING:** LONG CORD AND SMALL PARTS. STRANGULATION AND CHOKING HAZARD. NOT FOR CHILDREN UNDER 3 YEARS

**WARNING:** IMITATION FOOD, NOT FOR HUMAN CONSUMPTION.

**CAUTION:** RINSE EYES IMMEDIATELY IF THE WHIPPED CREAM GLUE COMES INTO CONTACT WITH THEM. IF IRRITATION PERSISTS, SEEK MEDICAL ATTENTION.