

anko

Garment Steamer User Manual



Model no.: KBG-615C

IMPORTANT SAFETY INSTRUCTIONS

Read this user manual carefully before first use and save it for future reference.

- This appliance is not intended for use by persons (including children) with reduced physical, sensory or mental capabilities or lack of experience and knowledge, unless they have been given supervision or instructions concerning use of the appliance by a person responsible for their safety.
- Children should be supervised to ensure that they do not play with the appliance.
- Cleaning and user maintenance shall not be made by children without adult supervision.
- This product has been designed for domestic use only. In case of any commercial use, inappropriate use or failure to comply with the instructions, the manufacturer is not responsible, and the product guarantee will not apply.
- Before connecting your appliance, check if the mains voltage is the same as the voltage indicated on your appliance and that the power outlet has an earth connection. If unsure check with an electrician.
- Ensure before each use that the supply cord or any other parts are not damaged.
- Keep the steamer and its cord out of reach of children when connected to mains power or cooling down.
- **DO NOT use the steamer if it has been dropped, if there are visible signs of damage, malfunction or if it is leaking water.**
- Always make sure the appliance is switched off, unplugged and cooled down before cleaning.

IMPORTANT! This steamer must not be left unattended while it is connected to mains power and before it has cooled down. The steam nozzle on the steamer can become extremely hot and may cause burns if touched.

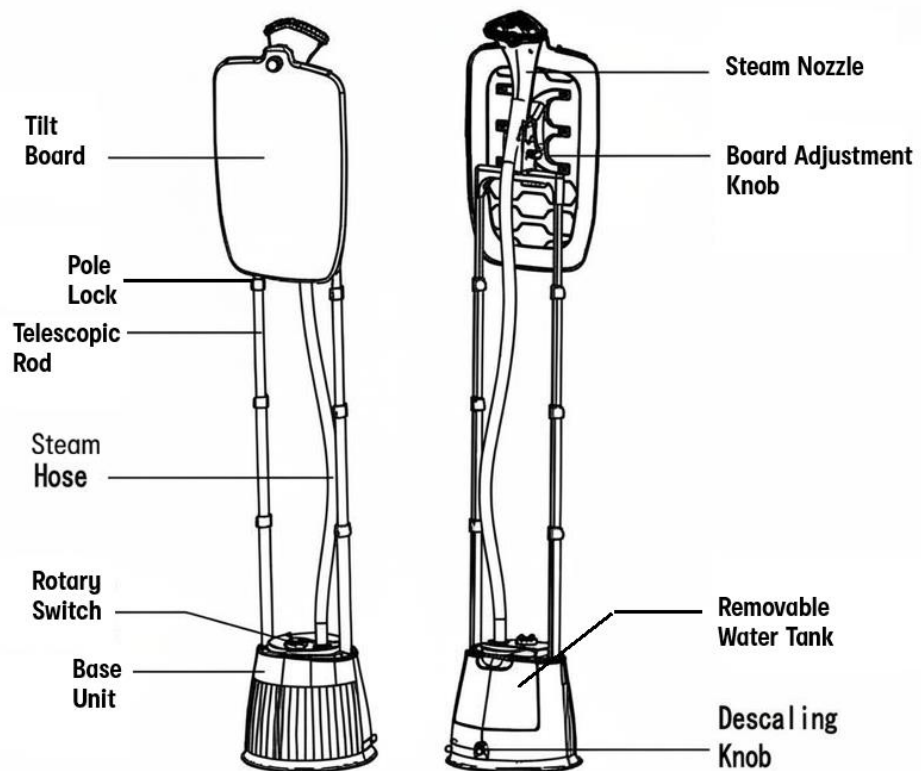
- Do not unplug the appliance by pulling on the cord or on the appliance. Always pull on the cord plug.
- Never immerse the steamer, the power cord or the cord plug in water. Never hold them under a water tap.
- Do not add hot water or other corrosive cleaning agents into the water tank, doing so may damage the appliance. Use Demineralized or distilled water is strongly recommended.
- Do not allow the supply cord to come in contact with the stem nozzle when the steamer is hot.
- If the supply cord is damaged, it must be replaced by qualified electrical person in order to avoid a hazard or the product must be disposed of.
- The garment steamer must be rested on a flat, stable surface.

CAUTION! Severe scalding can occur if the user touches the steam nozzle or steam during use. Do not place/use the appliance upside-down.

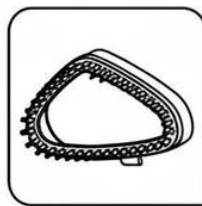
- Care should be taken when using the appliance due to hot steam. To prevent hazards caused by high-temperature steam, do not direct steam at people or animals when using the appliance.
- **IMPORTANT! to avoid damage to the appliance do not operate the appliance when it runs out of water.**
- Steam only in a vertical motion. Never use the steamer horizontally or tilted backwards, as it may result in hot water discharge.
- Before storage, wait till the appliance cools down completely and wind the power cord.
- Only use accessories provided by the manufacturer. The use of any accessory or attachment other than those provided by the manufacturer may result in fire, electric shock or irreversible damage to the appliance.
- **IMPORTANT! Unplug the appliance from mains power during filling water and cleaning.**
- For additional electrical protection, this appliance should be connected to a household residual current device (safety switch) with a rating of no more than 30mA. If unsure consult an electrician for advice.
- For cleaning and descaling of the appliance, refer to "Cleaning and maintenance" section below.
- For filling, refer to "FILLING THE WATER TANK" section below.

**SAVE THESE INSTRUCTIONS
FOR HOUSEHOLD USE ONLY**

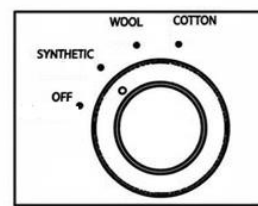
PARTS



Glove

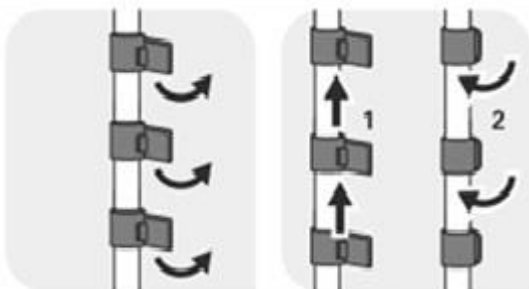


Brush



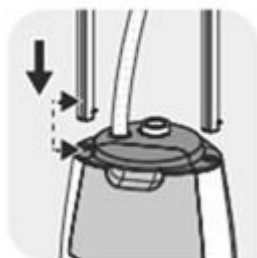
Control Panel

ASSEMBLING THE UNIT



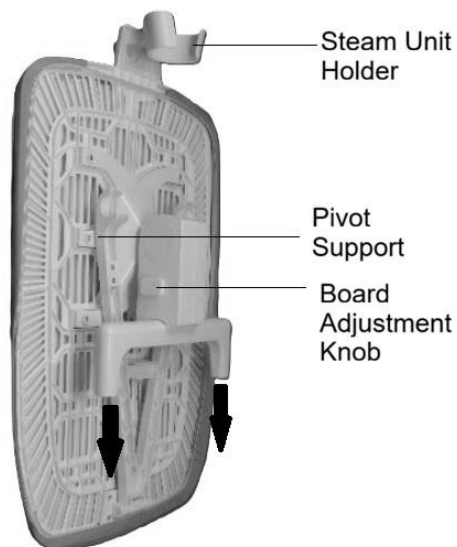
Step 1

Open the pole lock. Stretch the telescopic rod to fully unfold each section (1). Lock the pole lock (2).



Step 2

After the telescopic rod is fully extended, align the protrusion of the telescopic rod with the jack groove on the base Unit. Press down the telescopic rods until they click.



Step 3
 Face the Nozzle Holder towards the back of the main unit, insert the ironing board to the top of the telescopic rod.

FILLING THE WATER TANK



To prevent scale build-up always empty the water tank after use. Rinse the water tank to remove any deposits.



Before filling the water tank, ensure the steamer is disconnected from mains power.

- Hold the water tank handle and remove the water tank from the main unit.
- Unscrew the tank cover and fill in water.



- Close the water tank cover. Check the water level and see if water leaks from the tank cap.
- Hold the water tank handle and place the water tank vertically on the main unit.

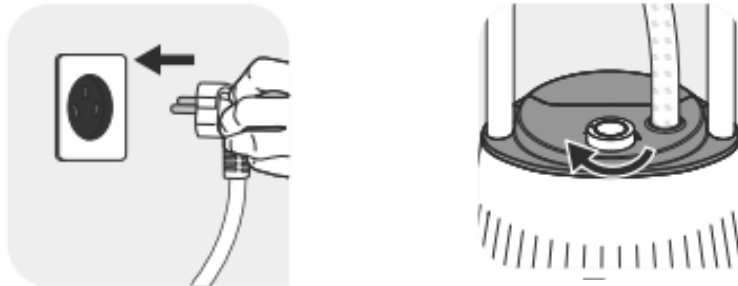


NOTES:

To avoid calcium deposits, we recommend you use distilled water for your garment steamer. To avoid damage or blockage, do not use any scented water or additives.

OPERATION

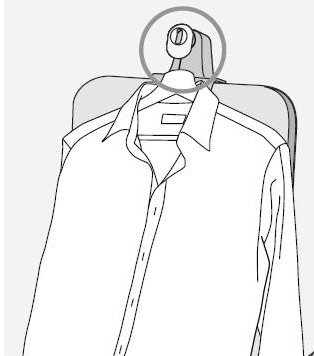
1. Put the Steam Unit on its holder. Ensure the Rotary Switch is in OFF position.
2. Plug the unit into a 220-240V AC electrical power outlet.
3. Turn the Rotary Switch to desired function: Synthetic/ Wool/ Cotton. Wait for approximately 45 seconds, the steam unit will start to generate steam. The unit is ready to use now



4. Hold the steamer unit in a vertical position with steam nozzle facing away from you.
5. Do not use the appliance upside-down or direct steam towards any part of your body.
6. When the water tank runs out of water, remove the water tank and refill with water.
7. After use, continue to steam until the water tank runs out of water and no steam comes out from the steam nozzle.
8. Unplug the steamer and wait for an hour for it to cool down before storage.

CAUTION! The high temperature steam from the steam nozzle can reach 180°C. Ensure that the material is high-temperature resistant before steaming. Do not leave the steam nozzle on the same spot for too long to avoid damage to the garment. Always follow cleaning instructions (label) on the garment.

ACCESORIES



Use the hanger hook to iron garment placed on a hanger



The brush allows steam to penetrate the clothes more. Align the top of the brush with the steam nozzle, then gently press the buckle at the bottom to fix it in place.
Caution! Before you remove or attach the brush, switch off the appliance and allow it to cool down completely.



The gloves protect your hand against the steam. Put the glove on the hand you are using to hold a garment.

This glove is for use with this garment steamer only and shall not be used for other purposes. Do not wash or iron the glove

USING IRONING BOARD

The ironing board can be adjusted at multiple angles from vertical to horizontal.

1. Press the Board Adjustment knob, swing the board to desired angle (45°/ 90°).
2. When set to 90°, pull down the Pivot Support and locked at pole stand to enhance stability.



Note: Do not use the steam nozzle in a horizontal position for a long time, otherwise water may drip from the steam panel.

USING THE STEAMER



Check the fabric label for recommendations before applying the steamer. We recommend that you test acrylic, nylon or other synthetic fabrics in an inconspicuous area to ensure these fabrics are not damaged by hot steam.

- **Press** the steamer head against the garment and **pull** the sides of the garment with your other hand to **stretch** it.
- Wear a glove on the hand you are using to hold a garment. The glove protects your hand against the steam from the steamer nozzle.
- Keep the steamer nozzle a slight distance away from garment with frills, ruffles, ruching or sequins. Use only the steam to loosen the fabric. You can also steam from the inside of the fabric.

For garment with collars, move the steamer horizontally along the collar.

For garments with buttons such as shirts, jackets and pants, close the first button to help straighten the fabric.

For shirt pockets, move the steamer head upwards.

To steam sleeves, start from the shoulder area and move the steamer head downwards. Steam while you carefully pull the sleeve diagonally down with the other hand.

Note: The appliance can be used for creating a natural look and for quick touch-ups. For garments with tough wrinkles and for a more formal look, it is recommended to use an iron in addition.

CLEANING AND MAINTENANCE



- Unplug the steamer from mains power and allow it to cool down completely before cleaning and storing.
- Before storage, continue to operate until no steam is spraying out from the steam nozzle and wait for the appliance to cool down completely.

Cleaning

Clean the handheld part and base unit with a damp cloth. If necessary, use a mild detergent.

Drain the water tank each time after use.

Do not use alcohol, acetone, benzene, scouring cleaning agents, etc., to clean the steamer. Do not use hard brushes or metallic objects.

Remove any deposits on the steam nozzle with a damp cloth. To avoid scratching the finishing, never use a metallic pad to clean the nozzle, and never place the steamer on a rough surface.

Always store the steaming unit seat upright on holder to avoid accidentally dropping the unit.

Descaling

If de-mineralized or distilled water was not used for operation, we recommend you follow below descaling procedure monthly.

1. Remove the water tank from main unit.
2. Fill the water tank with 50% white vinegar and 50% water. 400ml of this solution is recommended.

TIP! Mix the solution in a separate container and then pour into the water tank.

3. Place the tank on the main unit and shake the main unit gently, such that the solution may fill into the boiler.
4. Stand for 8 hours.
5. Shake the main unit gently.
6. Turn the descaling knob counterclockwise, pull to detach the descaling knob, then drain the main unit.



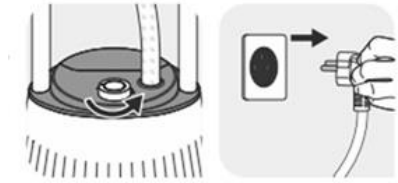
7. Tighten the descaling knob.
8. Place the steam nozzle on its holder.
9. Fill the water tank with half water and place it on the main unit.
10. Connect the power supply and turn on the product to let it produce steam continuously. Keep the product stationary during this process until all water in the tank is used up and no steam is emitted from the steam nozzle.
11. Turn off the power and unplug the plug. Maintenance is completed.

Important Notes for Cleaning:

- Do not pour water through the steam nozzle holes or the descaling port.
- Do not immerse the steam nozzle in water or other liquids.
- Only white vinegar can be used for descaling.
- Clean the product surface with a damp cloth or non-abrasive sponge. Do not use cleaning products such as soap or detergent.

STORAGE

1. Place the steam nozzle on the holder after use.
2. Ensure Rotary Switch is in Off position and unplug the unit.
3. Drain all water from the water tank and rinse the tank to remove impurities after disconnecting the power.



5. Roll the power cord and fasten it with a cable tie.
6. Fully retract each section, wheel the steam hose around the ironing board for 1 loop, put the steam nozzle on the holder.



Warning! DO NOT bend the steam hose during storage, otherwise the hose may stick and become inoperable.

Warning! DO NOT touch the steam unit; wait for it to cool down completely.

IMPORTANT! Carry the device by holding the telescopic rod; do not lift or carry the device by holding the ironing board or steam hose.

TROUBLESHOOTING

Problem	Possible Causes	Solutions
No steam	Power not connected	Check if the power plug is inserted correctly. Check if the gear rotary switch is in the off position. The device will start producing steam after about 35 seconds.
No steam	Clogged hose	Check if the hose is bent or twisted.
No steam	Steam head lying on the ground	Place the steam head on the hook and keep the hose unobstructed.
No steam	Empty water tank	Turn off the power and add water to the tank.
Low steam output	Sediment buildup in the boiler due to infrequent cleaning	Follow the cleaning instructions.
Low steam output	Clogged hose	Check if the hose is bent or twisted.
Water dripping from the steam nozzle	Steam condensation in the hose	Do not use the garment steamer in a horizontal position. Lift the steam nozzle to keep the steam delivery hose vertically and wait for the water to flow back into the boiler.
Long heating time for the boiler and/or white particles emitted	Sediment buildup in the boiler due to infrequent cleaning	Follow the cleaning instructions.
Gurgling sound from the hose	Excessively low position of the steam nozzle leading to condensation in the hose	Lift the hose from time to time and adjust it to a higher proper position to prevent condensation.
Water overflows from the water tank	Cracked water tank	Stop using the garment steamer, contact customer service center.

TECHNICAL DATA

Rated voltage: 220-240V~ 50-60Hz

Rate power: 1650-1950W

12 Month Warranty

Thank you for your purchase.

Your new product is warranted to be free from defects in materials and workmanship for the period stated above, from the date of purchase, provided that the product is used in accordance with accompanying recommendations or instructions where provided. This warranty is in addition to your rights under the Australian Consumer Law. For New Zealand customers, this warranty is in addition to statutory rights observed under New Zealand legislation.

We will provide you with your choice of a refund, repair (where possible) or exchange (availability dependent) for this product if it becomes defective within the warranty period. The business will bear the reasonable expense of claiming the warranty.

This warranty will no longer apply where the defect is a result of alteration, accident, misuse, abuse or neglect.

Please retain your receipt as proof of purchase and contact our Customer Service Centre as listed below, for the entity you purchased this product from, for any difficulties with your product. Warranty claims and claims for expense incurred in returning this product can be addressed to the respective Customer Service Centre.

Our goods come with guarantees that cannot be excluded under the Australian Consumer Law. You are entitled to a replacement or refund for a major failure and compensation for any other reasonably foreseeable loss or damage. You are also entitled to have the goods repaired or replaced if the goods fail to be of acceptable quality and the failure does not amount to a major failure.

Contact for Kmart purchases	Contact for Target purchases
Kmart Australia Ltd. C/- Customer Service Centre L2/ 1 MIDDLE ROAD, CHADSTONE VIC 3148 AUSTRALIA Customer Service: 1800 124 125 (Australia) or 0800 945 995 (New Zealand) or via Customer Help at kmart.com.au	Target Australia Pty Ltd C/- Customer Service Centre L2/ 1 MIDDLE ROAD, CHADSTONE VIC 3148 AUSTRALIA Customer Service: 1300 753 567 or via Customer Help at target.com.au/help/contact-us