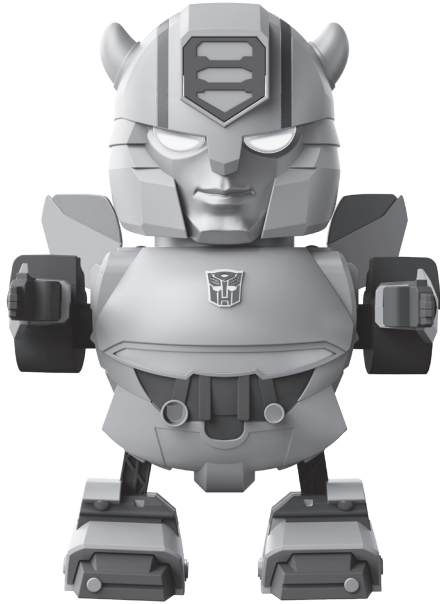


TRANSFORMERS

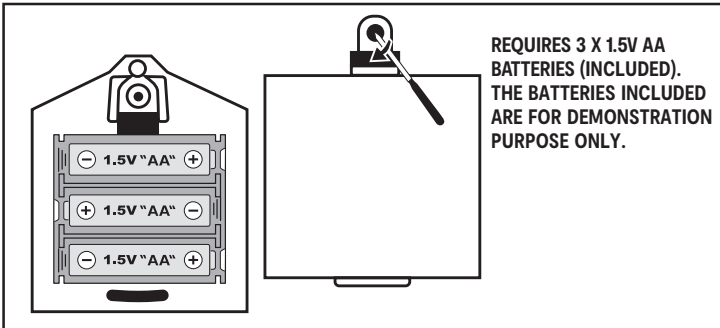
DANCING BUMBLEBEE WITH LIGHTS AND SOUNDS

INSTRUCTION MANUAL



INSERTING BATTERIES

- 1 - Open the battery compartment.
- 2 - Insert 3 x 1.5V AA batteries with correct + and - polarities.
- 3 - Close the cover.

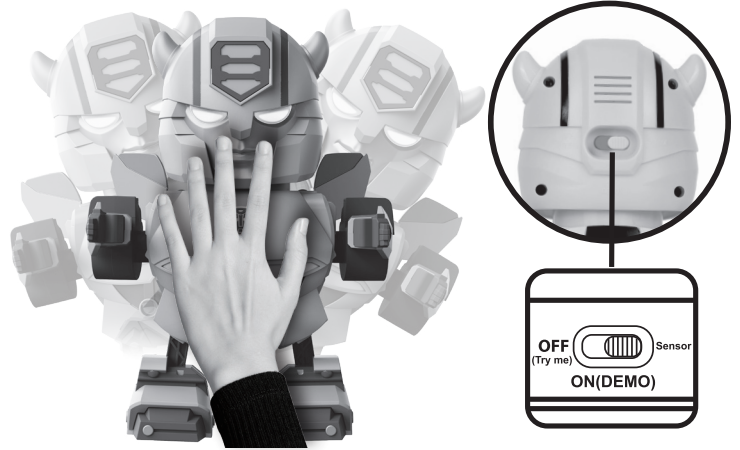
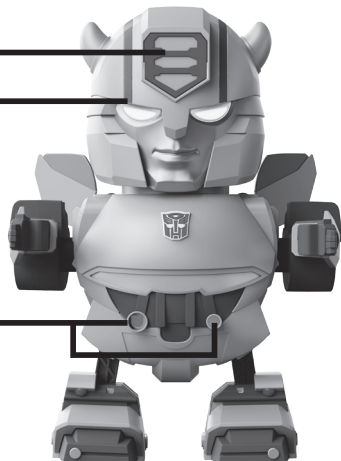


HOW TO USE:

MOTION BUTTON
(IN OFF/TRY ME MODE)

LED LIGHT

MOTION SENSOR



MOTION SENSING

When switching to the sensor mode, the transformer will dance for a while. When it stops, wave your hand close to the sensing area in front of the transformer to make it dance again.

Licensed by



TRANSFORMERS and HASBRO and all related trademarks and logos are trademarks of Hasbro, Inc. ©2026 Hasbro.

WARNING: BATTERIES ARE TO BE INSERTED WITH THE CORRECT POLARITY (+ AND -). DO NOT MIX DIFFERENT TYPES OF BATTERIES OR NEW AND USED BATTERIES. NON-RECHARGEABLE BATTERIES ARE NOT TO BE RECHARGED. RECHARGEABLE BATTERIES ARE ONLY TO BE CHARGED BY AN ADULT. RECHARGEABLE BATTERIES ARE TO BE REMOVED FROM THE TOY BEFORE BEING CHARGED. THE SUPPLY TERMINALS ARE NOT TO BE SHORT-CIRCUITED. REMOVE BATTERIES FROM THE TOY WHEN NOT IN USE FOR AN EXTENDED TIME OR WHEN BATTERIES BECOME EXHAUSTED. BATTERY INSTALLATION BY AN ADULT IS REQUIRED. DISPOSE OF BATTERIES RESPONSIBLY. DO NOT DISPOSE OF IN FIRE.

WARNING: CHOKING HAZARD
SMALL PARTS. NOT FOR CHILDREN UNDER 3 YEARS.

WARNING: THIS TOY PRODUCES
FLASHES THAT MAY TRIGGER
EPILEPSY IN SENSITISED INDIVIDUALS.



WARNING: FOR SAFETY REASONS, REMOVE ALL TAGS, LABELS AND PLASTIC FASTENERS BEFORE GIVING THIS TOY TO YOUR CHILD.

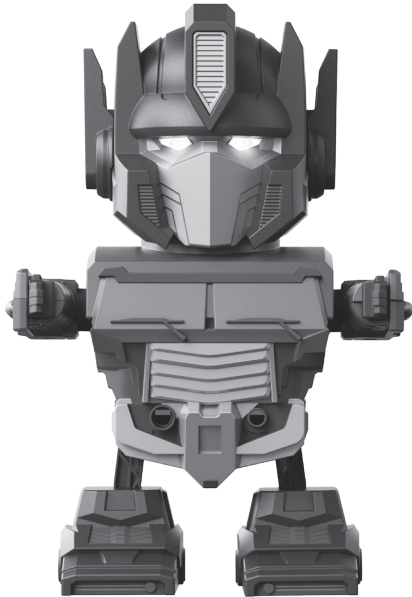
PRODUCT MAY VARY SLIGHTLY FROM IMAGE SHOWN.
PLEASE KEEP PACKAGING FOR FUTURE REFERENCE.

43-694-693

TRANSFORMERS

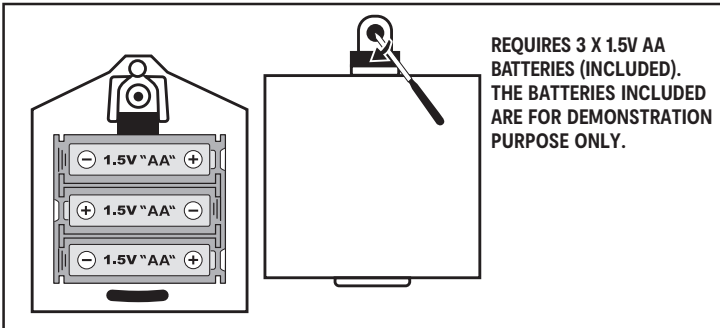
DANCING OPTIMUS PRIME WITH LIGHTS AND SOUNDS

INSTRUCTION MANUAL



INSERTING BATTERIES

- 1 - Open the battery compartment.
- 2 - Insert 3 x 1.5V AA batteries with correct + and - polarities.
- 3 - Close the cover.

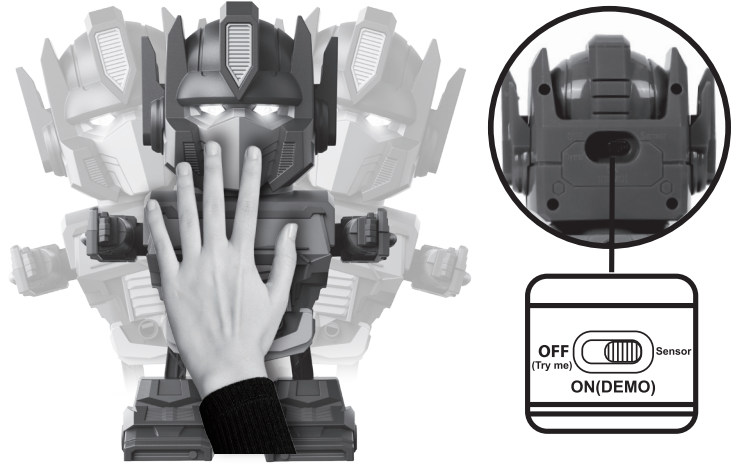
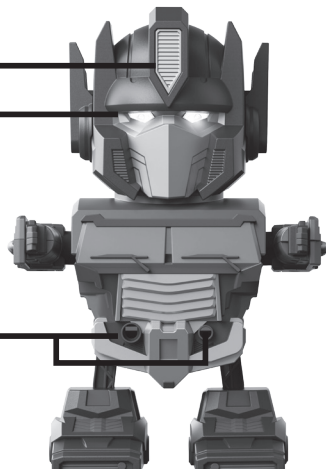


HOW TO USE:

MOTION BUTTON
(IN OFF/TRY ME MODE)

LED LIGHT

MOTION SENSOR



MOTION SENSING

When switching to the sensor mode, the transformer will dance for a while. When it stops, wave your hand close to the sensing area in front of the transformer to make it dance again.



TRANSFORMERS and HASBRO and all related trademarks and logos are trademarks of Hasbro, Inc. ©2026 Hasbro.

WARNING: BATTERIES ARE TO BE INSERTED WITH THE CORRECT POLARITY (+ AND -). DO NOT MIX DIFFERENT TYPES OF BATTERIES OR NEW AND USED BATTERIES. NON-RECHARGEABLE BATTERIES ARE NOT TO BE RECHARGED. RECHARGEABLE BATTERIES ARE ONLY TO BE CHARGED BY AN ADULT. RECHARGEABLE BATTERIES ARE TO BE REMOVED FROM THE TOY BEFORE BEING CHARGED. THE SUPPLY TERMINALS ARE NOT TO BE SHORT-CIRCUITED. REMOVE BATTERIES FROM THE TOY WHEN NOT IN USE FOR AN EXTENDED TIME OR WHEN BATTERIES BECOME EXHAUSTED. BATTERY INSTALLATION BY AN ADULT IS REQUIRED. DISPOSE OF BATTERIES RESPONSIBLY. DO NOT DISPOSE OF IN FIRE.

WARNING: CHOKING HAZARD
SMALL PARTS. NOT FOR CHILDREN UNDER 3 YEARS.

WARNING: THIS TOY PRODUCES
FLASHES THAT MAY TRIGGER
EPILEPSY IN SENSITISED INDIVIDUALS.



WARNING: FOR SAFETY REASONS, REMOVE ALL TAGS, LABELS AND PLASTIC FASTENERS BEFORE GIVING THIS TOY TO YOUR CHILD.

PRODUCT MAY VARY SLIGHTLY FROM IMAGE SHOWN.
PLEASE KEEP PACKAGING FOR FUTURE REFERENCE.

TRANSFORMERS

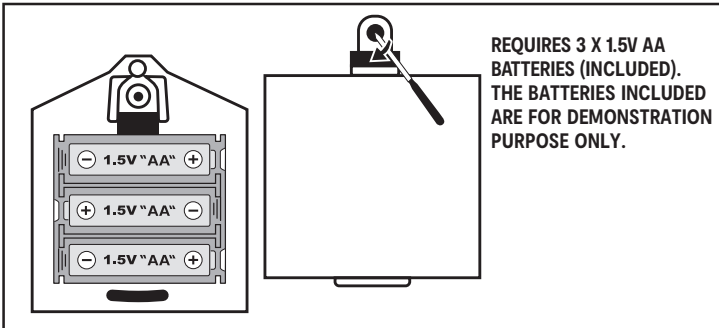
DANCING MEGATRON WITH LIGHTS AND SOUNDS

INSTRUCTION MANUAL

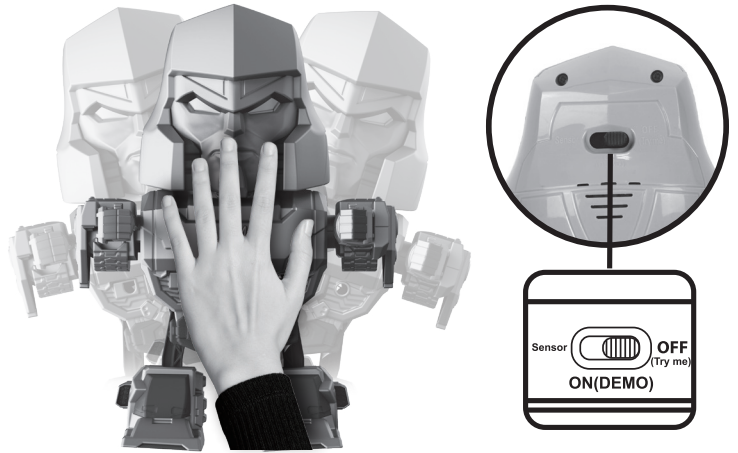
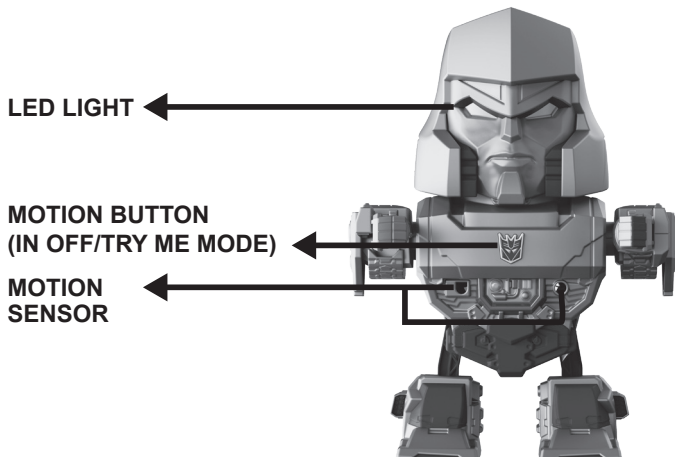


INSERTING BATTERIES

- 1 - Open the battery compartment.
- 2 - Insert 3 x 1.5V AA batteries with correct + and - polarities.
- 3 - Close the cover.



HOW TO USE:



MOTION SENSING

When switching to the sensor mode, the transformer will dance for a while. When it stops, wave your hand close to the sensing area in front of the transformer to make it dance again.

Licensed by



TRANSFORMERS and HASBRO and all related trademarks and logos are trademarks of Hasbro, Inc. ©2026 Hasbro.

WARNING: BATTERIES ARE TO BE INSERTED WITH THE CORRECT POLARITY (+ AND -). DO NOT MIX DIFFERENT TYPES OF BATTERIES OR NEW AND USED BATTERIES. NON-RECHARGEABLE BATTERIES ARE NOT TO BE RECHARGED. RECHARGEABLE BATTERIES ARE ONLY TO BE CHARGED BY AN ADULT. RECHARGEABLE BATTERIES ARE TO BE REMOVED FROM THE TOY BEFORE BEING CHARGED. THE SUPPLY TERMINALS ARE NOT TO BE SHORT-CIRCUITED. REMOVE BATTERIES FROM THE TOY WHEN NOT IN USE FOR AN EXTENDED TIME OR WHEN BATTERIES BECOME EXHAUSTED. BATTERY INSTALLATION BY AN ADULT IS REQUIRED. DISPOSE OF BATTERIES RESPONSIBLY. DO NOT DISPOSE OF IN FIRE.

WARNING: CHOKING HAZARD
SMALL PARTS. NOT FOR CHILDREN UNDER 3 YEARS.

WARNING: THIS TOY PRODUCES FLASHES THAT MAY TRIGGER EPILEPSY IN SENSITISED INDIVIDUALS.



WARNING: FOR SAFETY REASONS, REMOVE ALL TAGS, LABELS AND PLASTIC FASTENERS BEFORE GIVING THIS TOY TO YOUR CHILD.

PRODUCT MAY VARY SLIGHTLY FROM IMAGE SHOWN. PLEASE KEEP PACKAGING FOR FUTURE REFERENCE.