

# Draw and Print Board

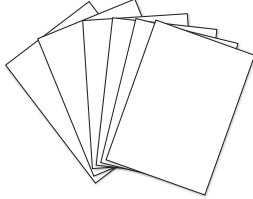
3+  
years

## Instruction Manual

### PARTS:



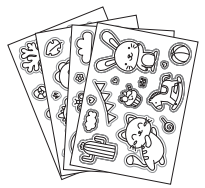
**1 x Draw and Print machine**  
36.5cm(W) x 5cm(D) x 28.5cm(H)



**6 x drawing paper sheets**



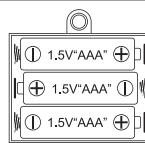
**6 x carbon paper sheets**



**4 x reusable tracing templates**

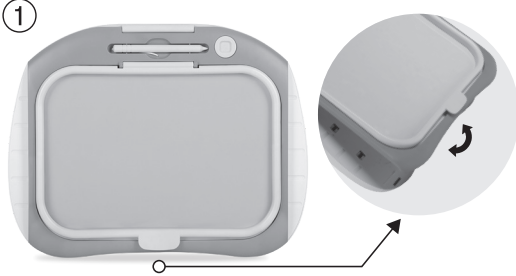
### BATTERY INSTALLATION:

- 1 - Open the battery compartment.
- 2 - Insert batteries with the correct + and - polarities.
- 3 - Close the cover, ensuring the compartment is screwed tightly.

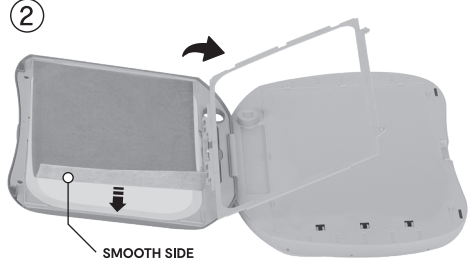


**REQUIRES 3 X 1.5V AAA BATTERIES (NOT INCLUDED).**

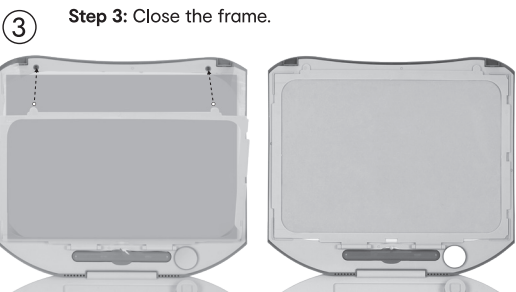
### HOW TO INSTALL:



**Step 1:** Lift the tab to open the machine.



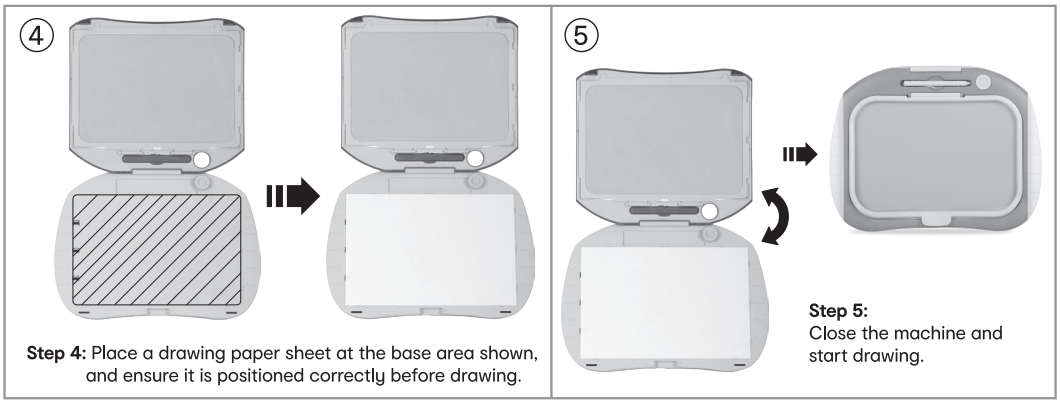
**Step 2:**  
Open the frame and place a carbon paper sheet inside.



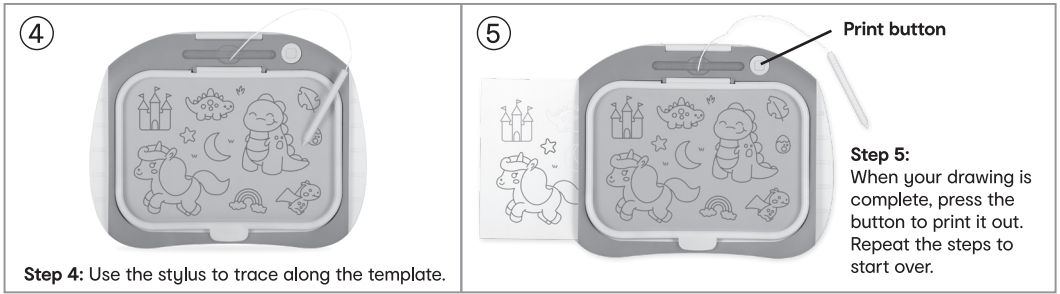
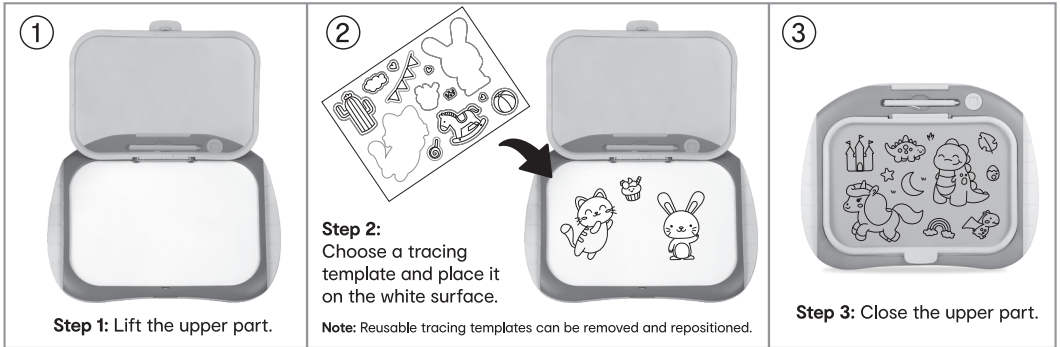
**Step 3:** Close the frame.

#### Notes:

- Ensure the smooth side of the carbon paper faces the white surface (face upward when closed).
- You can reuse the carbon paper pieces multiple times.



**HOW TO USE:**



**WARNING: CHOKING HAZARD**  
 SMALL PARTS. NOT FOR CHILDREN UNDER 3 YEARS.

**WARNING:** FOR SAFETY REASONS, REMOVE ALL TAGS, LABELS AND PLASTIC FASTENERS BEFORE GIVING THIS TOY TO YOUR CHILD.

**WARNING:** DISPOSE OF USED BATTERIES IMMEDIATELY. KEEP NEW AND USED BATTERIES AWAY FROM CHILDREN.

**CAUTION:** BATTERY INSTALLATION BY ADULT REQUIRED.

**WARNING: BATTERIES ARE TO BE INSERTED WITH THE CORRECT POLARITY (+ AND -). DO NOT MIX DIFFERENT TYPES OF BATTERIES OR NEW AND USED BATTERIES. NON-RECHARGEABLE BATTERIES ARE NOT TO BE RECHARGED. RECHARGEABLE BATTERIES ARE ONLY TO BE CHARGED BY AN ADULT. RECHARGEABLE BATTERIES ARE TO BE REMOVED FROM THE TOY BEFORE BEING CHARGED. THE SUPPLY TERMINALS ARE NOT TO BE SHORT-CIRCUITED. REMOVE BATTERIES FROM THE TOY WHEN NOT IN USE FOR AN EXTENDED TIME OR WHEN BATTERIES BECOME EXHAUSTED. BATTERY INSTALLATION BY AN ADULT IS REQUIRED. DISPOSE OF BATTERIES RESPONSIBLY. DO NOT DISPOSE OF IN FIRE.**

ADULT SUPERVISION REQUIRED.  
 PRODUCT MAY VARY FROM THE IMAGE SHOWN.  
 PLEASE KEEP THE PACKAGING FOR FUTURE REFERENCE.

MADE IN CHINA  
 CUSTOMER SERVICE:  
 KMART AU: 1800 124 125  
 KMART NZ: 0800 945 995  
 TARGET AU: 1300 753 567



K: 43-692-262  
 T: 72-439-302