


MY MINI WORLD

Light Up Kitchen

8+
YEARS



144
PCS
DIY



Build your own play scene



COMPONENT LIST

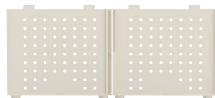
1



ROOF*1



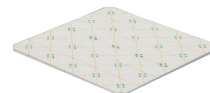
TRANSPARENT
PLATE*3



WALL PANELS*2



BASEPLATE*1



FLOOR*1



PILLAR*1



SMALL CAP*8



TWEEZERS*1



PENDANT LAMP*1



DISTRIBUTION BOX*1



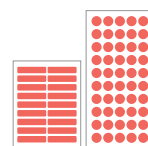
TRANSPARENT
DOOR*2



TRANSPARENT
HANDLE*2



CONNECTORS*3



JELLY GLUE*2



REFRIGERATOR BODY*1



REFRIGERATOR
SMALL PARTS*2



FREEZER
INNER PANEL*1



FREEZER
COVER PLATE*1



REFRIGERATOR
DOOR PANEL*2



REFRIGERATOR
INNER PANEL*1



REFRIGERATOR
COVER PLATE*1



REFRIGERATOR PANEL*3



REFRIGERATOR
HANDLE*3



REFRIGERATOR HOOK*1



APRON*1

COMPONENT LIST

2



KITCHEN COUNTER*1



KITCHEN COUNTER BODY*1



KITCHEN CABINET SIDE PANEL*1



KITCHEN CABINET FRONT DOOR*2



KITCHEN CABINET SIDE DOOR*1



CABINET DOOR HANDLE*9



HAND BASIN WATER PIPE*2



FAUCET*1



HAND BASIN*1



DETERGENT*1



SPONGE*1



CHOPPING BOARD*1



KITCHEN KNIFE*1



DUSTER*1



CABBAGE*1



LARGE PLATE*1



SEASONING BOTTLES*3



OLIVE OIL*1



OIL POT LID*1



OIL POT BODY*1



UTENSIL HOOK*1



SPATULA*1



SIEVE*1



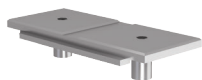
LADLE*1



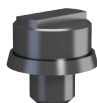
KITCHEN RANGE COUNTER*1

COMPONENT LIST

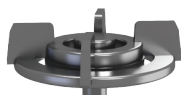
3



KITCHEN RANGE
BRACKET*1



GAS SWITCH*2



GAS STOVE*2



KITCHEN RANGE
CABINET*1



KITCHEN RANGE
DOOR*1



GRILL*2



DOOR HANDLE*1



DRAWER*2



DRAWER TRANSPARENT
BOARD*2



PAN*1



PAN LID*1



PAN LID HANDLE*1



CASSEROLE POT*1



CASSEROLE LID*1



CASSEROLE LID
HANDLE*1



RICE COOKER BODY*1



RICE COOKER
INNER RACK*1



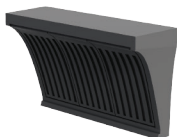
RICE COOKER LINER*1



RICE COOKER LID*1



HEAT-RESISTANT
GLOVES*1



KITCHEN EXTRACTOR
FAN*1



CABINET*1



CABINET
TRANSPARENT DOOR*2



CABINET DOOR*2



MENU HANGING
BOARD*1

COMPONENT LIST



SMALL PLATE*1



SHELVES *2



POTTED PLANT *1



SAUCE BOTTLE *2



GRINDING ROD *2



DINING TABLE
DESKTOP *1



DINING TABLE
BODY *1



THERMOS LID *1



THERMOS *1



CUP*1



CUTLERY *2



STEAK *1



CHERRY TOMATO *1



DINING PLATE *1



SEAT HIND LEGS *1



SEAT FRONT LEGS *1



SEAT BACKREST *1



SEAT CUSHION *1



TRASH CAN LID *1



TRASH CAN BASE *1



TRASH CAN BODY *1



VASE *1



PAPER CARD



PAPER BOX

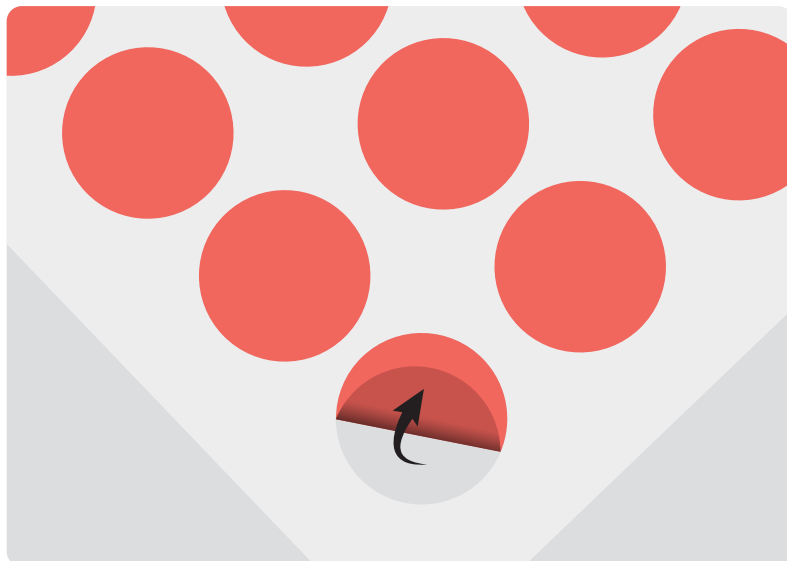
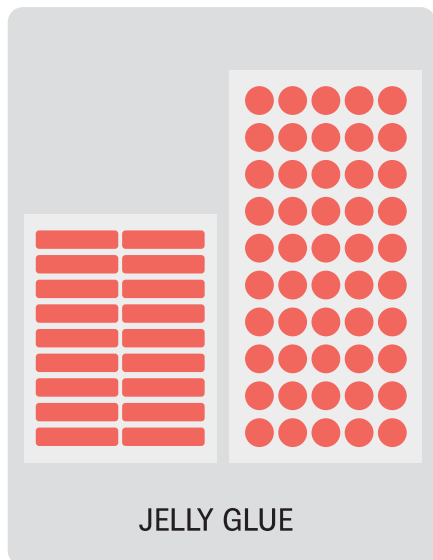


STICKERS

IT IS RECOMMENDED TO FIX THE ACCESSORIES WITH JELLY GLUE (INCLUDED): ● USE DOT GLUE ■■■■ USE LONG STRIPS GLUE.

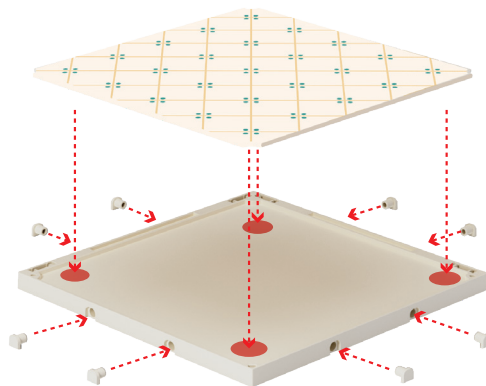
THE USE OF JELLY GLUE FOR ADHESIVE APPLICATION IS A CRUCIAL STEP, AS IT AFFECTS THE QUALITY AND LIFESPAN OF THE MODEL, PLEASE BE SURE TO FOLLOW THE FOLLOWING STEPS:

1. BEFORE APPLYING JELLY GLUE, WIPE CLEAN THE SURFACE WITH A DAMP CLOTH AND ALLOW IT TO DRY.
2. USE TWEEZERS TO PEEL OFF JELLY GLUE FROM BACKING TO PREVENT IT FROM LOSING ITS STICKINESS UPON CONTACT WITH SKIN.
3. APPLY THE JELLY GLUE TO THE AREA WHERE YOU WANT TO STICK, THEN PRESS IT OUTWARD FROM THE CENTER. (APPLY FIRM, EVEN PRESSURE OVER THE ENTIRE JELLY GLUE FOR 3-5 SECONDS TO ENSURE ADHESION)
4. AFTER PLACING THE JELLY GLUE TO ACCESSORY, PLEASE PEEL OFF THE FILM FROM JELLY GLUE SURFACE.

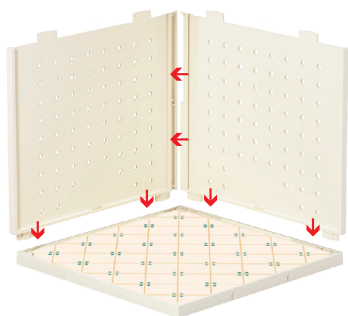




1:

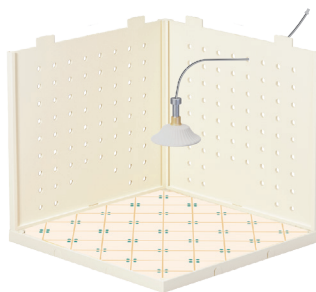


2:



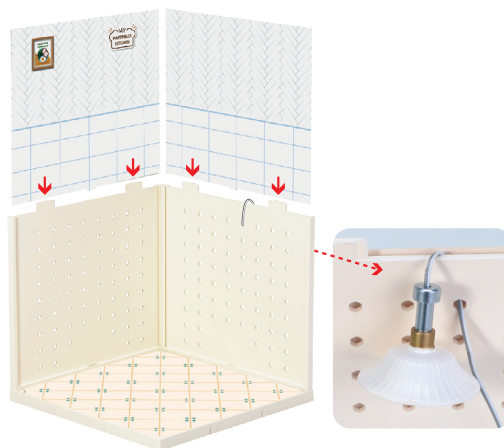
INSERT TWO WALL PANELS TOGETHER INTO THE FLOOR

3:

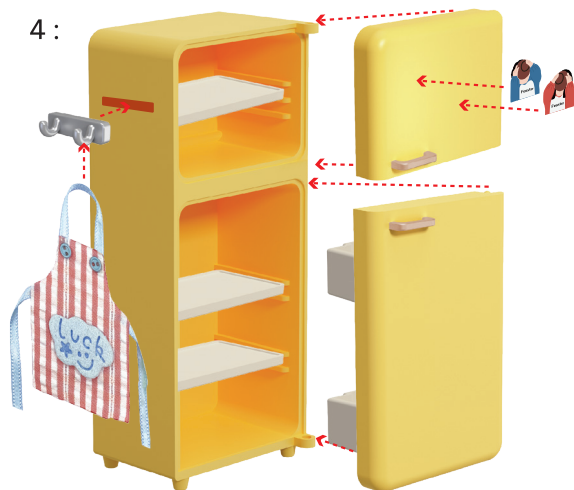
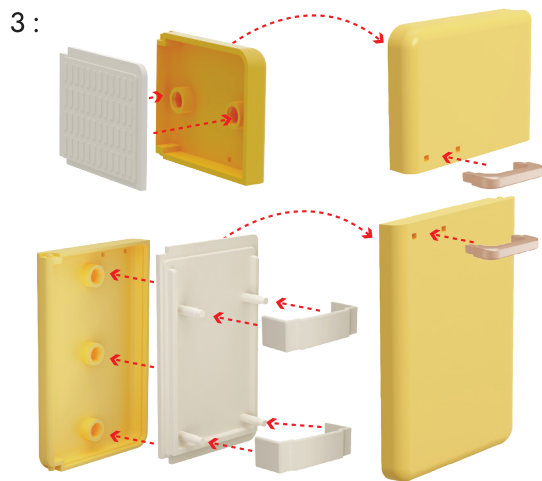
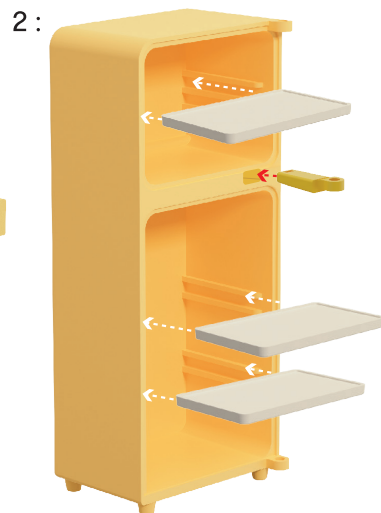
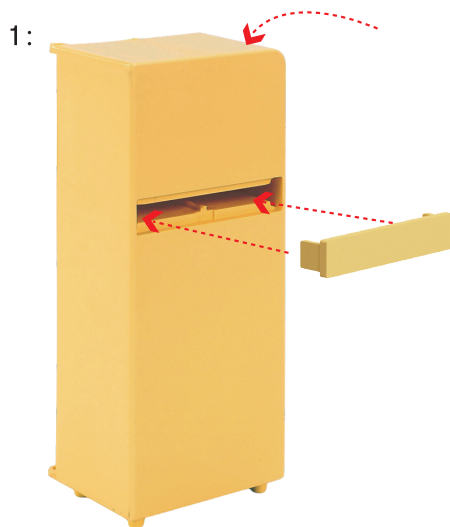


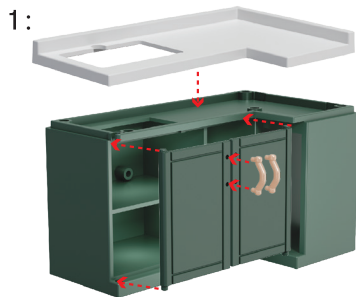
INSERT THE WIRE PASS THROUGH THE PLASTIC PANEL

4:

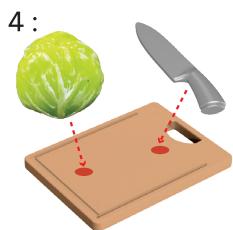


INSERT THE CARDBOARD INTO THE GROOVE ON THE WALL PANELS

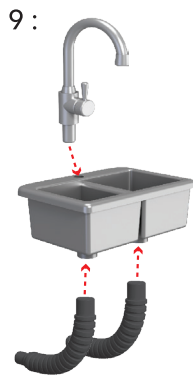


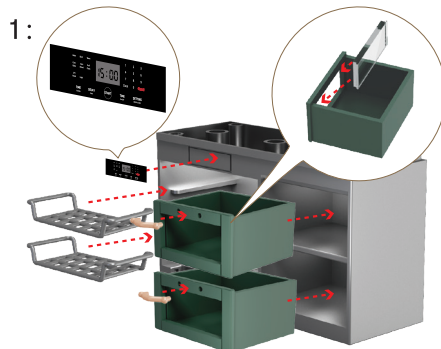
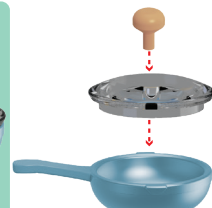


INSTALL THE MAIN CABINET DOOR AND COUNTERTOP

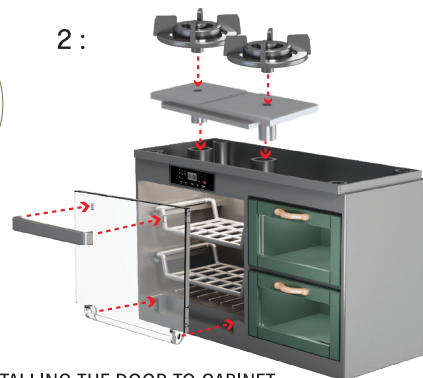


INSTALL SIDE CABINET DOOR



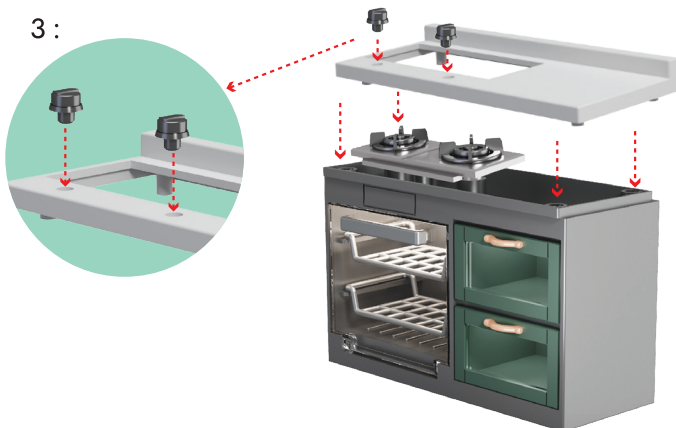


2:



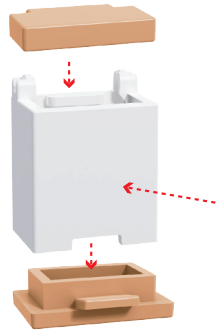
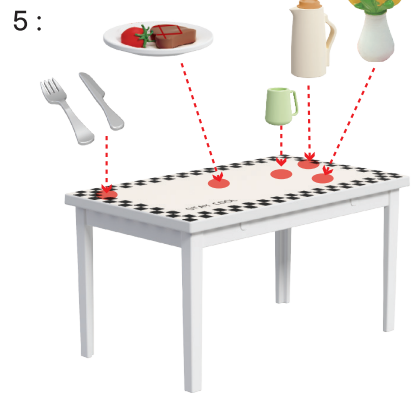
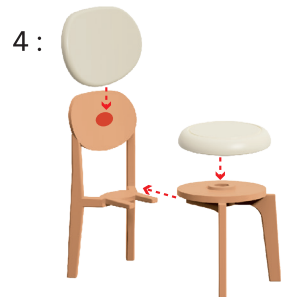
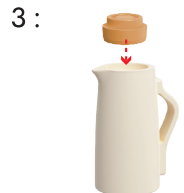
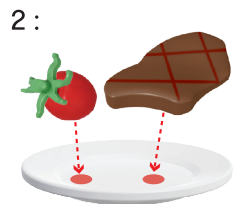
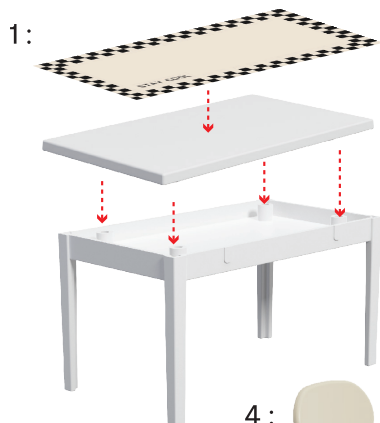
INSTALL THE HANDLE BEFORE INSTALLING THE DOOR TO CABINET

3:



4:







FOLDING THE PAPER BOX



1:



PLEASE FOLD THE BOX ALONG THE CREASES.



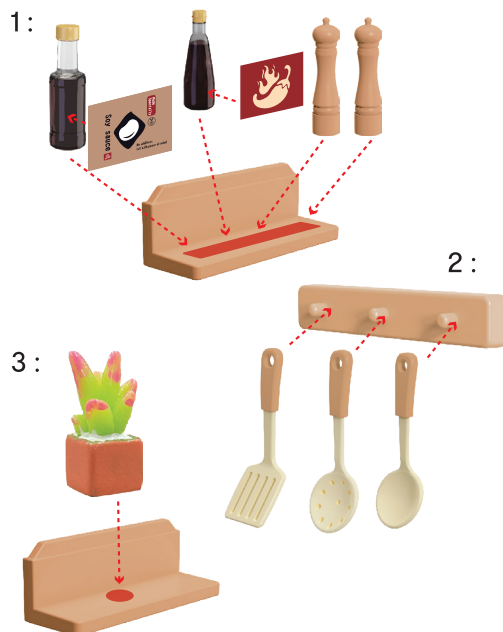
2:



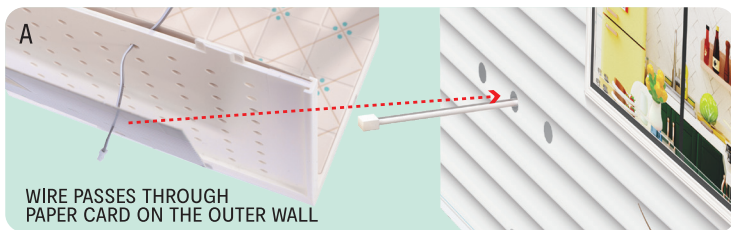
PLACE THE PAPER BOX

3:





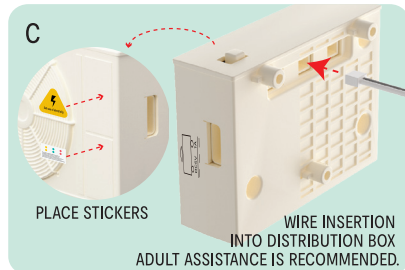
14



A
WIRE PASSES THROUGH
PAPER CARD ON THE OUTER WALL

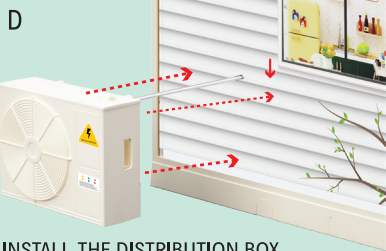


B
PUT IN THE PAPER CARD
(OUTER SIDE WALL)

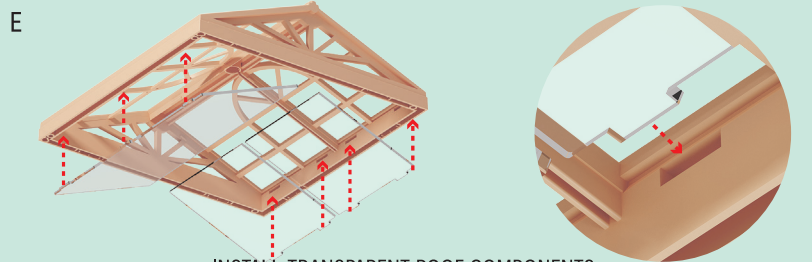


C
PLACE STICKERS

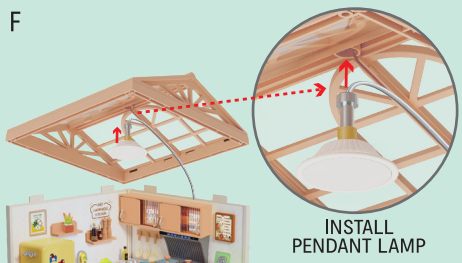
WIRE INSERTION
INTO DISTRIBUTION BOX
ADULT ASSISTANCE IS RECOMMENDED.



D
INSTALL THE DISTRIBUTION BOX



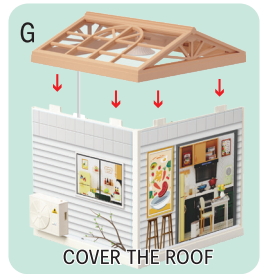
E
INSTALL TRANSPARENT ROOF COMPONENTS



F
INSTALL
PENDANT LAMP



INSERT THE
WIRE INTO THE GAP



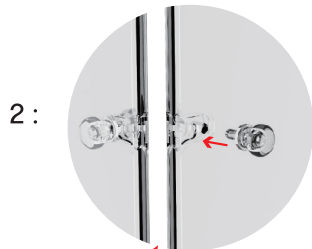
G
COVER THE ROOF



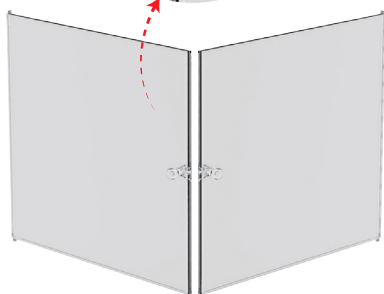
1:



INSTALL THE DOOR HANDLE



2:

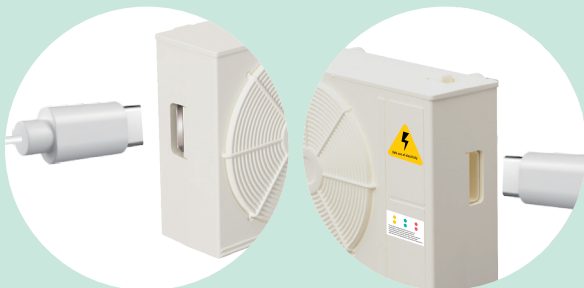


3:



01 DISTRIBUTION BOX ILLUSTRATION

1.CONNECT TO POWER SUPPLY



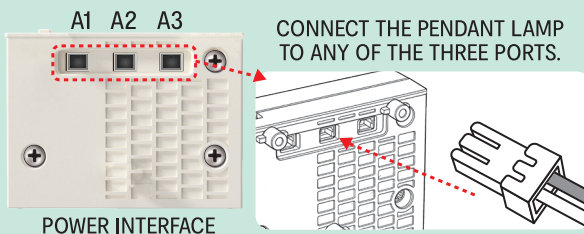
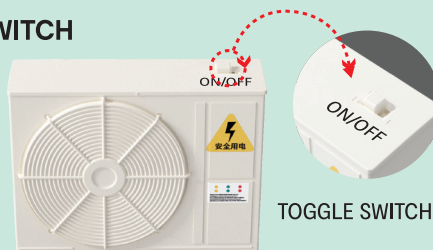
CHOOSE EITHER THE LEFT OR RIGHT INTERFACE, DO NOT CONNECT BOTH INTERFACES TO TRANSFORMER/POWER SUPPLY SIMULTANEOUSLY. FAILURE TO FOLLOW THESE INSTRUCTIONS MAY RESULT IN DAMAGE TO THE PRODUCT.



⚠ Type-C INTERFACE

ATTENTION:INPUT POWER 5V --- 1A (MAX. 5W)

2.SWITCH



02 NOTE

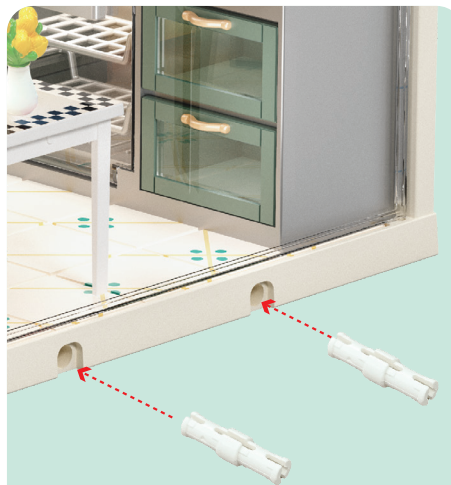
⚠ WARNING:

- WARNING: THE PRODUCT SHOULD ONLY BE CONNECTED TO THE DISTRIBUTION BOX SUPPLIED BY THE MANUFACTURER.
- WARNING: TRANSFORMER/ POWER SUPPLY AND USB CABLE ARE NOT A TOY(TRANSFORMER/POWER SUPPLY NOT INCLUDED). TRANSFORMER/POWER SUPPLY, DISTRIBUTION BOX AND USB CABLE USED WITH THE ELECTRIC TOY SHALL BE REGULARLY EXAMINED FOR DAMAGE TO THE SUPPLY CORD, PLUG,ENCLOSURE OR OTHER PARTS,AND IN THE EVENT OF DAMAGE, IT SHALL NOT BE USED UNTIL THE DAMAGE HAS BEEN REPAIRED.
- THE PRODUCT LIABLE TO BE CLEANED WITH LIQUIDS ARE TO BE DISCONNECTED FROM THE POWER SUPPLIER BEFORE CLEANING. REMOVE THE DISTRIBUTION BOX AND USB CABLE BEFORE CLEANING.

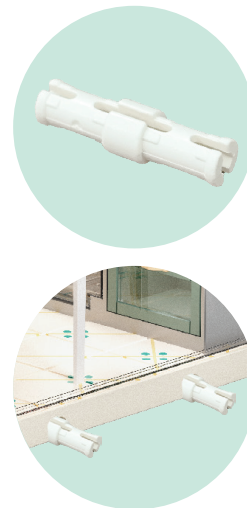
EXPAND PLAY: LEFT AND RIGHT ASSEMBLY



1.REMOVE THE ACCESSORIES



2.INSTALL CONNECTION ACCESSORIES



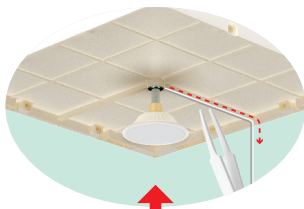
3.CONNECT TOGETHER



CONNECT ONE OF THE INTERFACES TO THE POWER SUPPLY(5V 1A). AND THEN CONNECT THE OTHER DISTRIBUTION BOXES IN SERIES.



EXPAND PLAY: UP AND DOWN ASSEMBLY



INSTALL PENDANT LAMP TO CEILING AS SHOWN.



UP AND DOWN COMBINATION

CONNECT ONE OF THE INTERFACES TO THE POWER SUPPLY(5V 1A), AND THEN CONNECT THE OTHER DISTRIBUTION BOXES IN SERIES.






WARNING: ADULT SUPERVISION AND ASSISTANCE REQUIRED

WARNING: FOR SAFETY REASONS, REMOVE ALL TAGS, LABELS AND PLASTIC FASTENERS BEFORE GIVING THIS TOY TO YOUR CHILD.

WARNING:
CHOKING HAZARD- SMALL PARTS.
NOT FOR CHILDREN UNDER 3 YEARS.

CAUTION: TRANSFORMER/ POWER SUPPLY AND USB CABLE ARE NOT A TOY (TRANSFORMER/POWER SUPPLY NOT INCLUDED). TRANSFORMER/POWER SUPPLY AND USB CABLE USED WITH THE ELECTRIC TOY SHALL BE REGULARLY EXAMINED FOR DAMAGE TO THE SUPPLY CORD, PLUG, ENCLOSURE OR OTHER PARTS, AND IN THE EVENT OF DAMAGE, IT SHALL NOT BE USED UNTIL THE DAMAGE HAS BEEN REPAIRED.

USB SPECIFICATION:
USB INPUT: 5V  1A (MAX. 5W)
USB TYPE: TYPE-C



PRODUCT MAY VARY SLIGHTLY FROM IMAGE SHOWN. KEEP THE PACKAGING SINCE IT CONTAINS IMPORTANT INFORMATION. MISUSE OF TRANSFORMER OR POWER SUPPLY CAN CAUSE ELECTRICAL SHOCK. THE PRODUCT SHALL ONLY BE USED WITH A TRANSFORMER OR POWER SUPPLY FOR TOYS. THIS TOY IS ONLY TO BE CONNECTED TO EQUIPMENT BEARING EITHER OF THE FOLLOWING SYMBOLS.



or



MADE IN CHINA

CUSTOMER SERVICE:

KMART AU: 1800 124 125
KMART NZ: 0800 945 995
TARGET AU: 1300 753 567

K: 43-691-975