

# MY MINI WORLD

Light Up Lounge

8+  
YEARS



111  
PCS



Build your own play scene

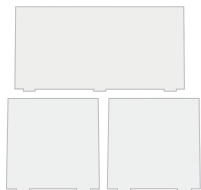


# COMPONENT LIST

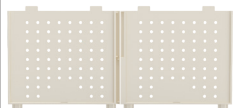
1



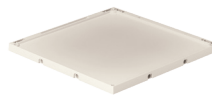
ROOF\*1



TRANSPARENT  
PLATE\*3



WALL PANELS\*2



BASEPLATE\*1



FLOOR\*1



PILLAR\*1



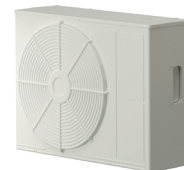
SMALL CAP\*8



TWEEZERS\*1



PENDANT  
LAMP\*1



DISTRIBUTION  
BOX\*1



TRANSPARENT  
DOOR\*2



TRANSPARENT  
HANDLE\*2



CONNECTOR\*3



LARGE CABINET\*1



TRANSPARENT  
CABINET DOOR\*2



CABINET DOOR  
HANDLE\*4



DRAWER\*3



DRAWER  
HANDLE\*5



CAMERA  
TOP CAP\*1



CAMERA BASE\*1

## COMPONENT LIST

2



CAMERA LENS\*1



CALENDAR\*1



CALENDAR HOOK\*2



SODA WATER\*2



WATER DISPENSER BODY\*1



WATER DISPENSER PANEL\*1



WATER STORAGE TANK\*1



CUP\*3



STORAGE RACK BACKBOARD\*1



SHELF RACK\*2



SHORT CANDLE\*1



CANDLE HOLDER\*1



AROMATHERAPY\*1



HOOK SHELF\*1



HOOK \*3



BEAR ORNAMENT\*1



LONG CANDLE\*1



FLOOR LAMP SHADE\*1



LAMP POLE\*1



LAMP BASE\*1

# COMPONENT LIST

3



TV CABINET\*1



TV CABINET DRAWER\*2



TRANSPARENT TV CABINET DOOR\*2



RECORD PLAYER\*1



STYLUS\*1



VINYL RECORD\*1



THE TOP CAP OF FACIAL TISSUE \*1



FACIAL TISSUE BASE \*1



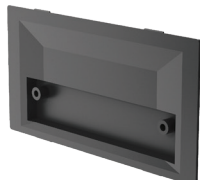
TISSUE \*1



VASE \*1



TELEVISION\*1



TELEVISION REAR PANEL\*1



PICTURE FRAME\*1



FRONT PANEL OF PENDULUM CLOCK\*1



REAR PANEL OF PENDULUM CLOCK\*1



PENDULUM\*1



THE TABLE TOP OF HIGH TABLE\*1



HIGH TABLE LEG\*1



THE TABLE TOP OF SHORT TABLE\*1



THE TRANSPARENT DESKTOP OF SHORT TABLE\*1

# COMPONENT LIST



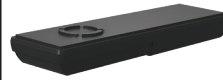
TABLE LEG\*1



CAKE\*1



CAKE PLATE\*1



REMOTE CONTROL\*1



SOFA CUSHION\*1



SOFA BASE\*1



STRIPED PILLOW\*1



CHECKERED PILLOW\*1



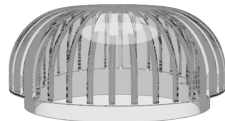
FLOWER SHAPED CUSHION\*1



AIR PURIFIER\*1



PURIFIER FAN BLADES\*1



THE TOP CAP OF PURIFIER \*1



PURIFIER BASE \*1



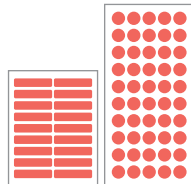
STICKERS



PAPER CARD



PAPER BOX

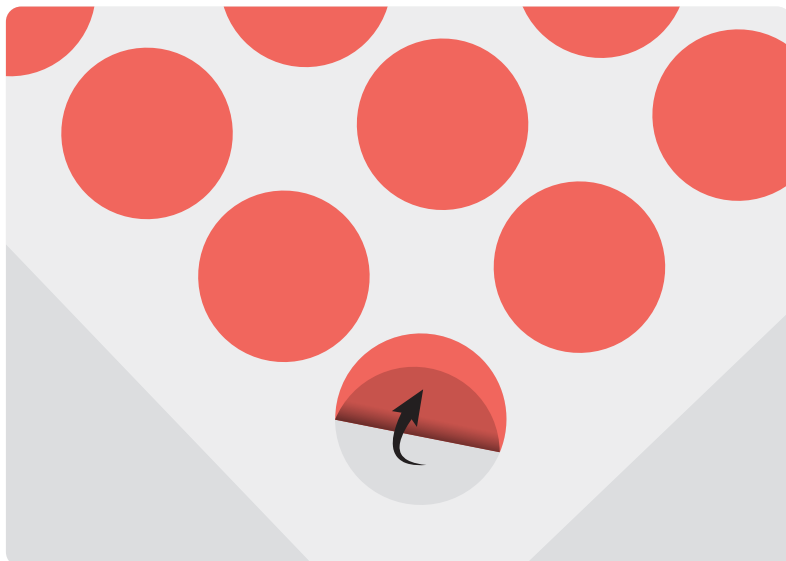
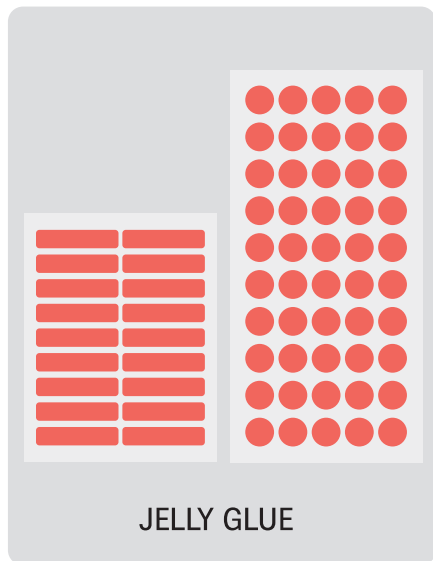


JELLY GLUE\*2

IT IS RECOMMENDED TO FIX THE ACCESSORIES WITH JELLY GLUE (INCLUDED): ● USE DOT GLUE ■■■■ USE LONG STRIPS GLUE.

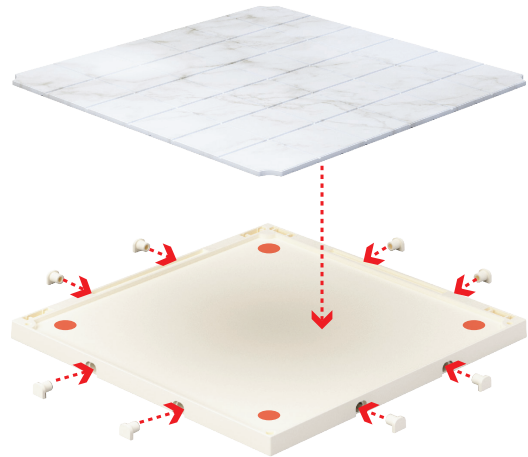
THE USE OF JELLY GLUE FOR ADHESIVE APPLICATION IS A CRUCIAL STEP, AS IT AFFECTS THE QUALITY AND LIFESPAN OF THE MODEL, PLEASE BE SURE TO FOLLOW THE FOLLOWING STEPS:

1. BEFORE APPLYING JELLY GLUE, WIPE CLEAN THE SURFACE WITH A DAMP CLOTH AND ALLOW IT TO DRY.
2. USE TWEEZERS TO PEEL OFF JELLY GLUE FROM BACKING TO PREVENT IT FROM LOSING ITS STICKINESS UPON CONTACT WITH SKIN.
3. APPLY THE JELLY GLUE TO THE AREA WHERE YOU WANT TO STICK, THEN PRESS IT OUTWARD FROM THE CENTER. (APPLY FIRM, EVEN PRESSURE OVER THE ENTIRE JELLY GLUE FOR 3-5 SECONDS TO ENSURE ADHESION)
4. AFTER PLACING THE JELLY GLUE TO ACCESSORY, PLEASE PEEL OFF THE FILM FROM JELLY GLUE SURFACE.

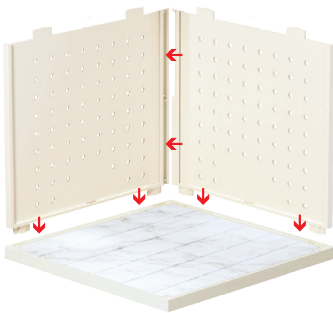




1:

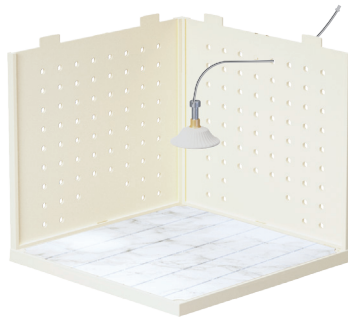


2:



INSERT TWO WALL PANELS TOGETHER INTO THE FLOOR

3:



INSERT THE WIRE PASS THROUGH THE PLASTIC PANEL

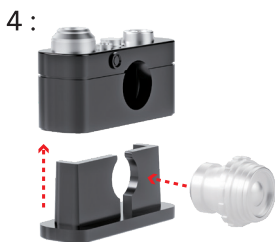
4:



INSERT THE CARDBOARD INTO THE GROOVE ON THE WALL PANELS

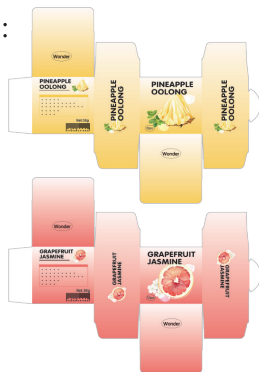
# ASSEMBLY INSTRUCTIONS

7



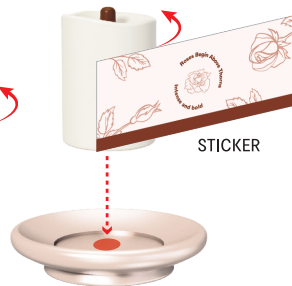


1:



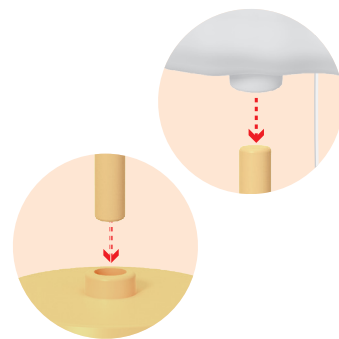
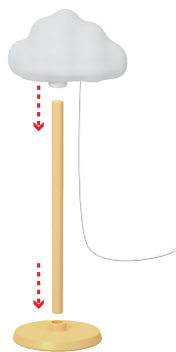
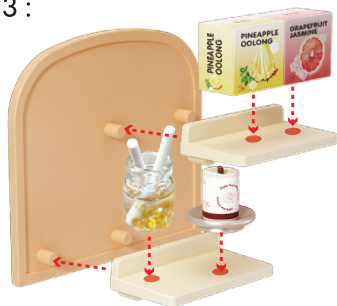
PLEASE FOLD THE BOX  
ALONG THE CREASES.

2:



STICKER

3:

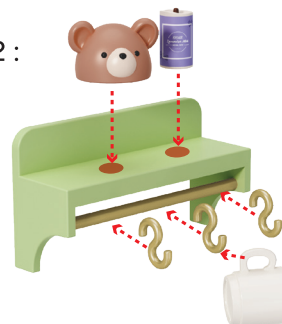


1:

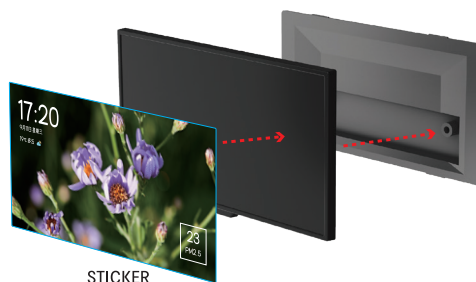
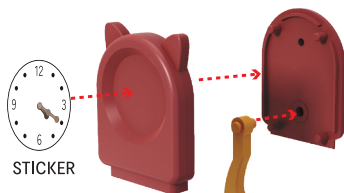
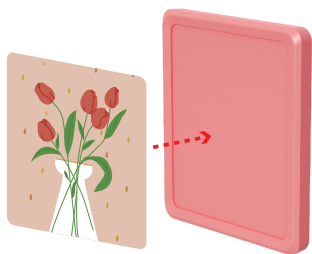
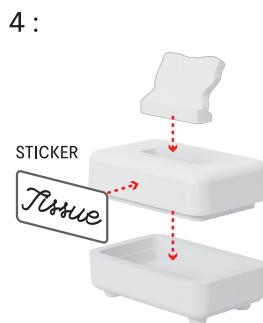
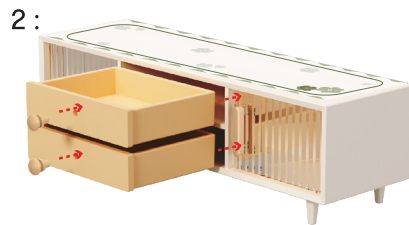
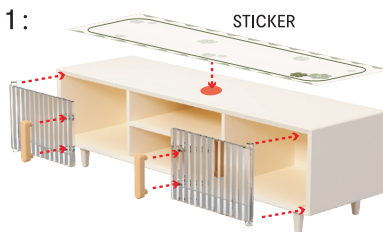


STICKER

2:



# ASSEMBLY INSTRUCTIONS

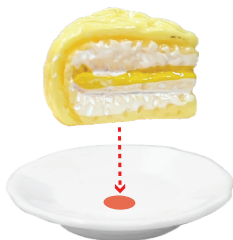




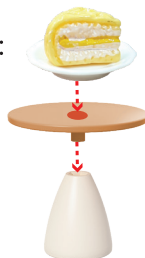
1:



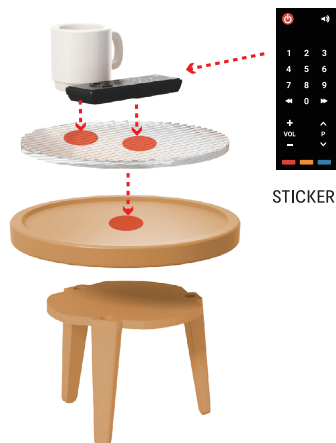
2:



3:



4:



STICKER





1:

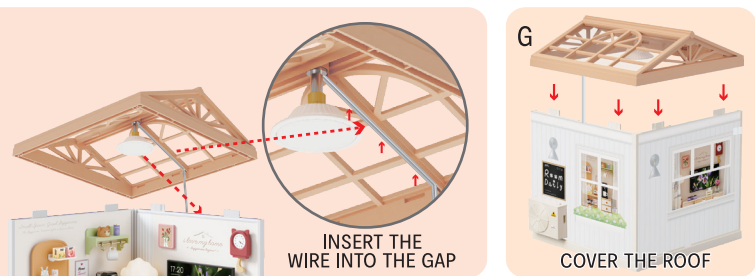
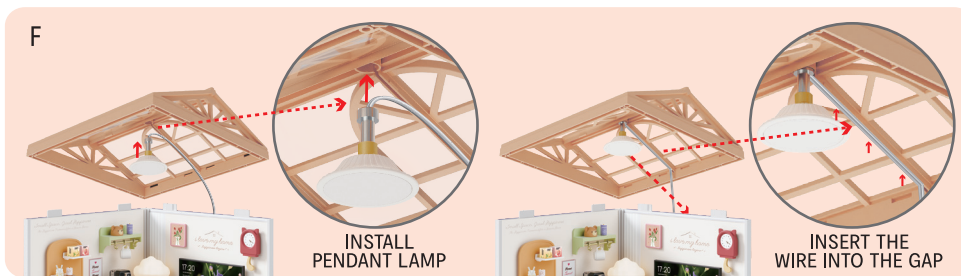
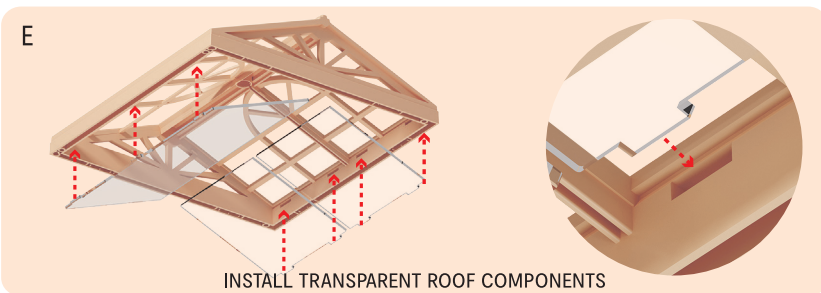
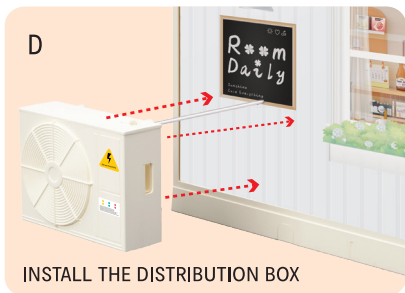
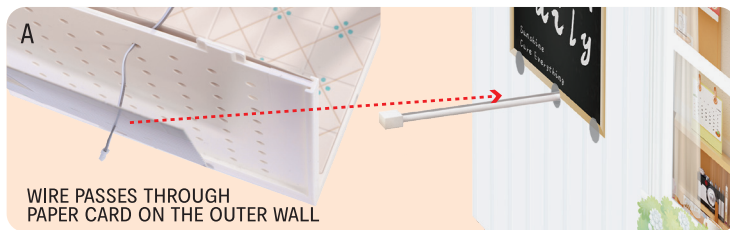


2:



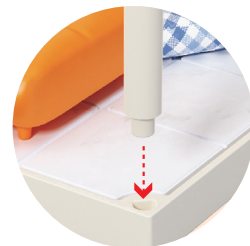
3:





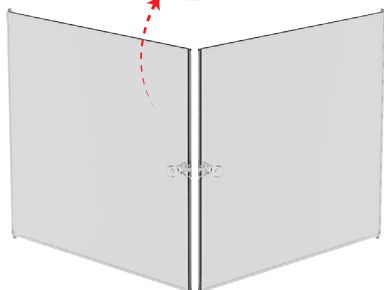
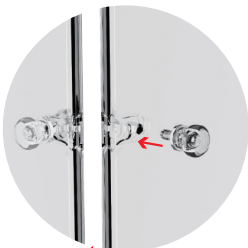


1:



INSTALL THE DOOR HANDLE

2:

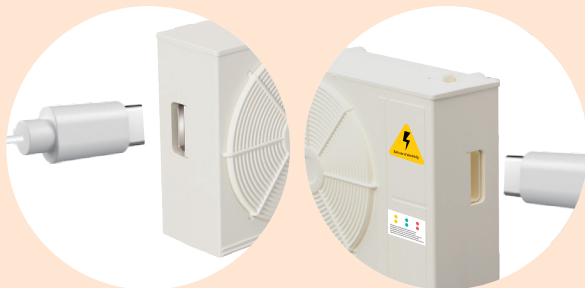


3:



## 01 DISTRIBUTION BOX ILLUSTRATION

### 1.CONNECT TO POWER SUPPLY



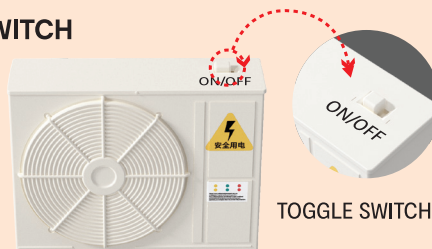
CHOOSE EITHER THE LEFT OR RIGHT INTERFACE, DO NOT CONNECT BOTH INTERFACES TO TRANSFORMER/POWER SUPPLY SIMULTANEOUSLY. FAILURE TO FOLLOW THESE INSTRUCTIONS MAY RESULT IN DAMAGE TO THE PRODUCT.



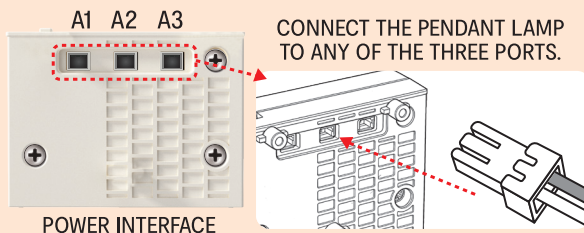
⚠ Type-C INTERFACE

ATTENTION: INPUT POWER 5V  $\overline{\text{---}}$  1A (MAX. 5W)

### 2.SWITCH



TOGGLE SWITCH



CONNECT THE PENDANT LAMP TO ANY OF THE THREE PORTS.

## 02 NOTE

### ⚠ WARNING:

- WARNING: THE PRODUCT SHOULD ONLY BE CONNECTED TO THE DISTRIBUTION BOX SUPPLIED BY THE MANUFACTURER.
- WARNING: TRANSFORMER/ POWER SUPPLY AND USB CABLE ARE NOT A TOY (TRANSFORMER/POWER SUPPLY NOT INCLUDED). TRANSFORMER/POWER SUPPLY, DISTRIBUTION BOX AND USB CABLE USED WITH THE ELECTRIC TOY SHALL BE REGULARLY EXAMINED FOR DAMAGE TO THE SUPPLY CORD, PLUG, ENCLOSURE OR OTHER PARTS, AND IN THE EVENT OF DAMAGE, IT SHALL NOT BE USED UNTIL THE DAMAGE HAS BEEN REPAIRED.
- THE PRODUCT LIABLE TO BE CLEANED WITH LIQUIDS ARE TO BE DISCONNECTED FROM THE POWER SUPPLIER BEFORE CLEANING. REMOVE THE DISTRIBUTION BOX AND USB CABLE BEFORE CLEANING.

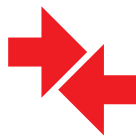
## EXPAND PLAY: LEFT AND RIGHT ASSEMBLY



1. REMOVE THE ACCESSORIES



2. INSTALL CONNECTION ACCESSORIES



3. CONNECT TOGETHER



CONNECT ONE OF THE INTERFACES TO THE POWER SUPPLY(5V 1A). AND THEN CONNECT THE OTHER DISTRIBUTION BOXES IN SERIES.

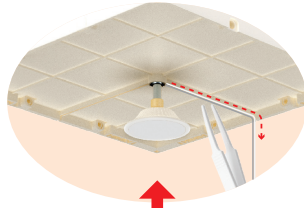


3.CONNECT TOGETHER



REMOVE THE ROOF OF THE FIRST FLOOR

EXPAND PLAY:  
UP AND DOWN ASSEMBLY



INSTALL PENDANT LAMP TO CEILING AS SHOWN.

CONNECT ONE OF THE INTERFACES TO THE POWER SUPPLY(5V 1A), AND THEN CONNECT THE OTHER DISTRIBUTION BOXES IN SERIES.



UP AND DOWN COMBINATION






**WARNING:** ADULT SUPERVISION AND ASSISTANCE REQUIRED

**WARNING:** FOR SAFETY REASONS, REMOVE ALL TAGS, LABELS AND PLASTIC FASTENERS BEFORE GIVING THIS TOY TO YOUR CHILD.

**WARNING:**  
  
**CHOKING HAZARD - SMALL PARTS.**  
 NOT FOR CHILDREN UNDER 3 YEARS.

CAUTION: TRANSFORMER/ POWER SUPPLY AND USB CABLE ARE NOT A TOY (TRANSFORMER/POWER SUPPLY NOT INCLUDED). TRANSFORMER/POWER SUPPLY AND USB CABLE USED WITH THE ELECTRIC TOY SHALL BE REGULARLY EXAMINED FOR DAMAGE TO THE SUPPLY CORD, PLUG, ENCLOSURE OR OTHER PARTS, AND IN THE EVENT OF DAMAGE, IT SHALL NOT BE USED UNTIL THE DAMAGE HAS BEEN REPAIRED.

**USB SPECIFICATION:**  
 USB INPUT: 5V  1A (MAX. 5W)  
 USB TYPE: TYPE-C



PRODUCT MAY VARY SLIGHTLY FROM IMAGE SHOWN. KEEP THE PACKAGING SINCE IT CONTAINS IMPORTANT INFORMATION. MISUSE OF TRANSFORMER OR POWER SUPPLY CAN CAUSE ELECTRICAL SHOCK. THE PRODUCT SHALL ONLY BE USED WITH A TRANSFORMER OR POWER SUPPLY FOR TOYS. THIS TOY IS ONLY TO BE CONNECTED TO EQUIPMENT BEARING EITHER OF THE FOLLOWING SYMBOLS.



or



**MADE IN CHINA**

**CUSTOMER SERVICE:**

**KMART AU:** 1800 124 125  
**KMART NZ:** 0800 945 995  
**TARGET AU:** 1300 753 567

**K: 43-691-968**