

# MY MINI WORLD

Light Up Bedroom

8+  
YEARS



98  
PCS



Build your own play scene

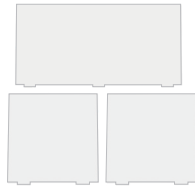


# COMPONENT LIST

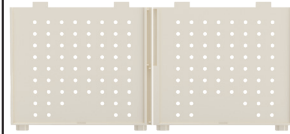
1



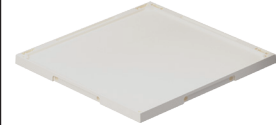
ROOF\*1



TRANSPARENT  
PLATE\*3



WALL PANELS\*2



BASEPLATE\*1



FLOOR\*1



PILLAR\*1



SMALL CAP\*8



TWEEZERS\*1



PENDANT LAMP\*1



DISTRIBUTION  
BOX\*1



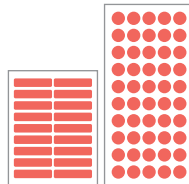
TRANSPARENT  
DOOR\*2



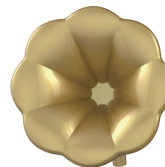
TRANSPARENT  
HANDLE\*2



CONNECTOR\*3



JELLY GLUE\*2



GRAMOPHONE HORN\*1



GRAMOPHONE BODY\*1

# COMPONENT LIST

2



GRAMOPHONE PANEL\*1



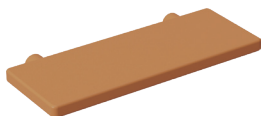
VINYL RECORD\*1



APPLE DOLL\*1



BOOK\*4



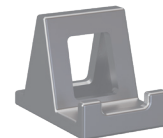
SHELF\*2



VANITY MIRROR\*1



TABLET \*1



TABLET HOLDER\*1



JEWELLERY RACK\*1



JEWELLERY RACK  
CROSS BAR\*4



WATCH\*1



BRACELET\*1



VANITY TABLE\*1



VANITY  
TABLE DRAWER\*2



DRAWER HANDLE\*2



BRACKET OF  
MIRROR\*1

# COMPONENT LIST

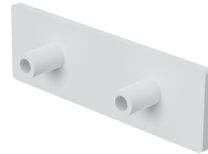
3



MIRROR\*1



AIR-CONDITIONING\*1



AIR-CONDITIONING  
BACKBOARD\*1



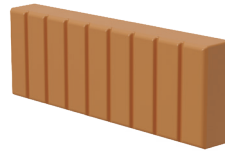
SMALL PICTURE  
FRAME\*2



PICTURE FRAME\*1



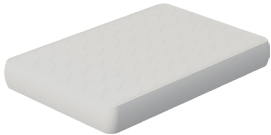
BED HEAD\*1



BED HEAD\*1



BED FRAME\*1



MATTRESS\*1



BED COVER\*1



QUILT\*1



PILLOW\*1



FLOWER SHAPED  
PILLOW\*1



DOG PILLOW \*1



AROMATHERAPY \*1



BEDSIDE TABLE \*2



DRAWER\*4



BEDSIDE DRAWER  
HANDLE\*4



SMALL TABLE\*1



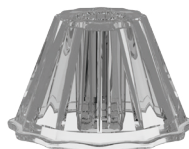
AIR CONDITIONING  
REMOTE CONTROL\*1



SEAT CUSHION\*1



VASE\*1



LAMPSHADE\*1



LAMP BASE\*1



HOOK BACKBOARD\*1



HOOK\*3



TISSUE COVER\*1



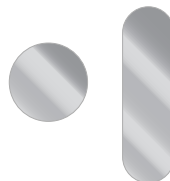
TISSUE BASE\*1



WALL CALENDAR\*1



STICKERS



MIRROR STICKER

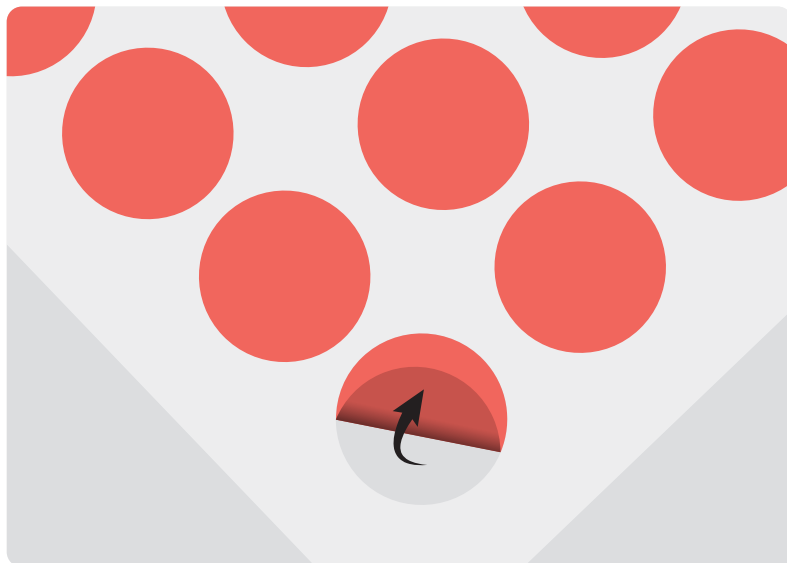
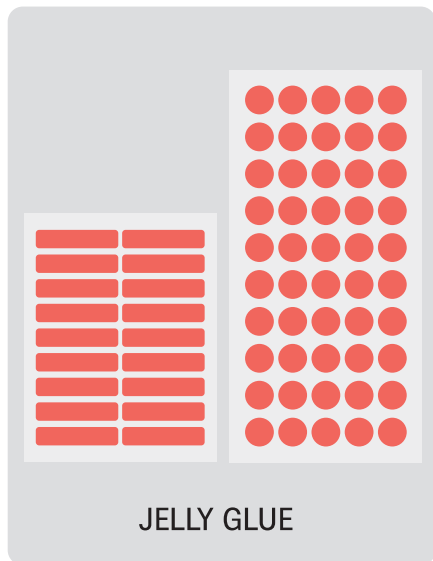


PAPER CARD

IT IS RECOMMENDED TO FIX THE ACCESSORIES WITH JELLY GLUE (INCLUDED): ● USE DOT GLUE ■ USE LONG STRIPS GLUE.

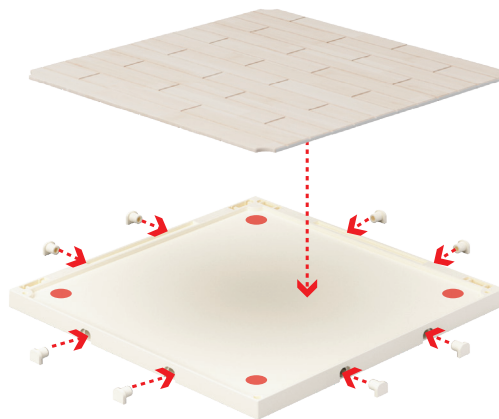
THE USE OF JELLY GLUE FOR ADHESIVE APPLICATION IS A CRUCIAL STEP, AS IT AFFECTS THE QUALITY AND LIFESPAN OF THE MODEL, PLEASE BE SURE TO FOLLOW THE FOLLOWING STEPS:

1. BEFORE APPLYING JELLY GLUE, WIPE CLEAN THE SURFACE WITH A DAMP CLOTH AND ALLOW IT TO DRY.
2. USE TWEEZERS TO PEEL OFF JELLY GLUE FROM BACKING TO PREVENT IT FROM LOSING ITS STICKINESS UPON CONTACT WITH SKIN.
3. APPLY THE JELLY GLUE TO THE AREA WHERE YOU WANT TO STICK, THEN PRESS IT OUTWARD FROM THE CENTER. (APPLY FIRM, EVEN PRESSURE OVER THE ENTIRE JELLY GLUE FOR 3-5 SECONDS TO ENSURE ADHESION)
4. AFTER PLACING THE JELLY GLUE TO ACCESSORY, PLEASE PEEL OFF THE FILM FROM JELLY GLUE SURFACE.

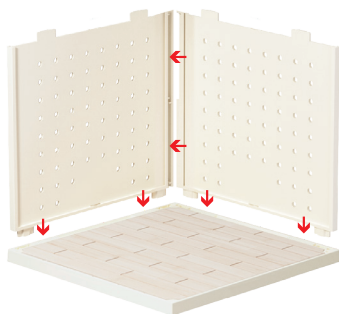




1:

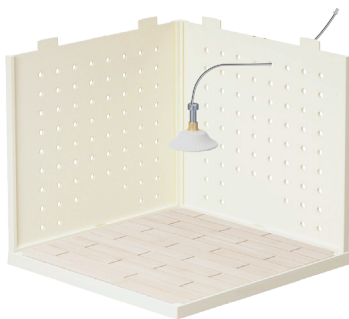


2:



INSERT TWO WALL PANELS TOGETHER INTO THE FLOOR

3:



INSERT THE WIRE PASS THROUGH THE PLASTIC PANEL

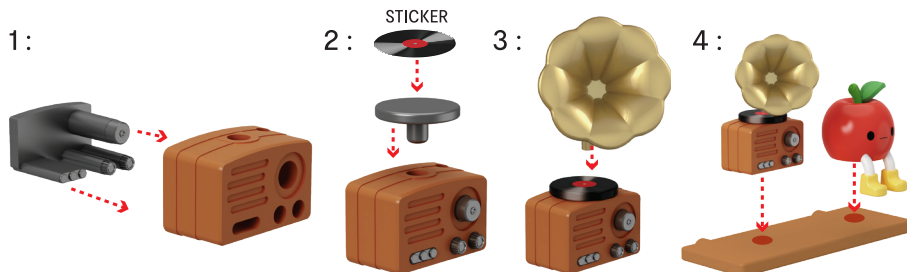
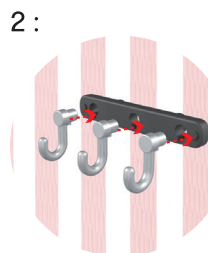
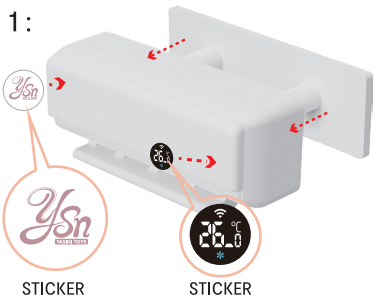
4:



INSERT THE CARDBOARD INTO THE GROOVE ON THE WALL PANELS

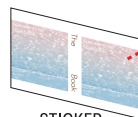
# ASSEMBLY INSTRUCTIONS

7





1:



STICKER

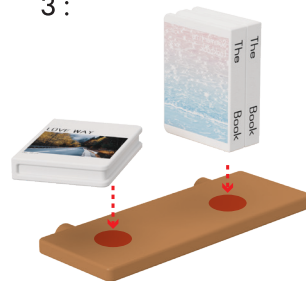


STICKER

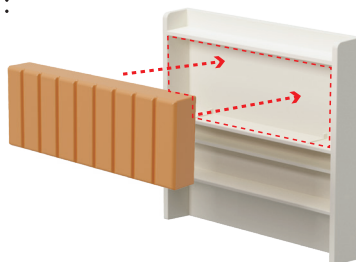
2:



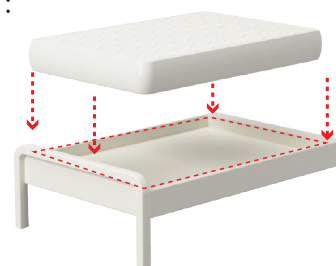
3:



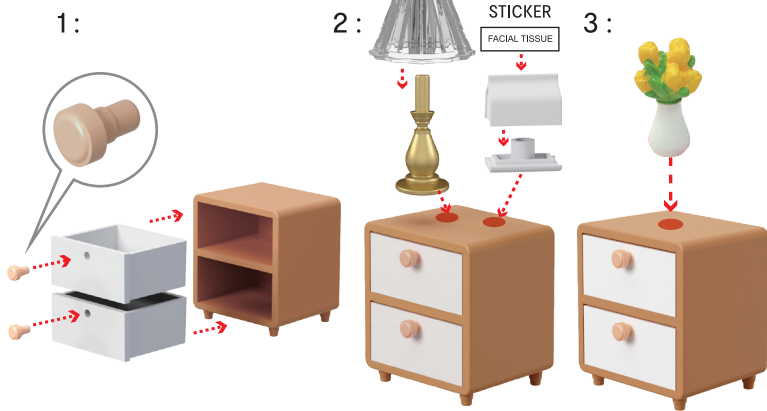
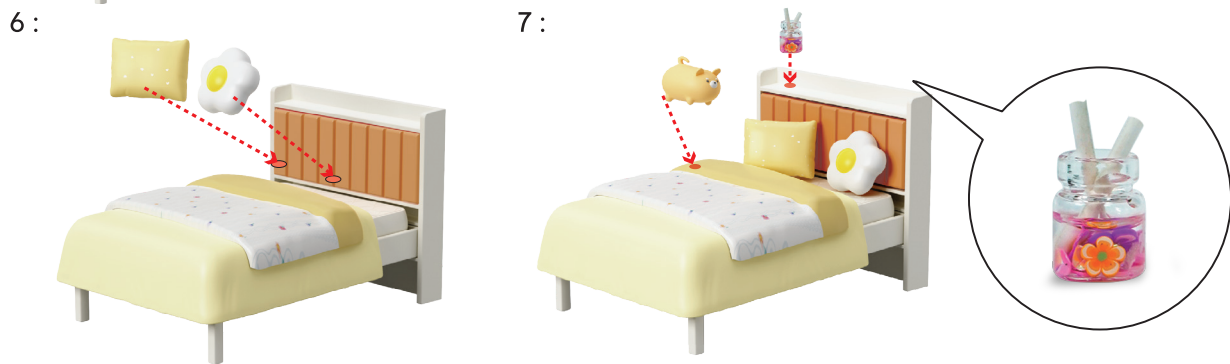
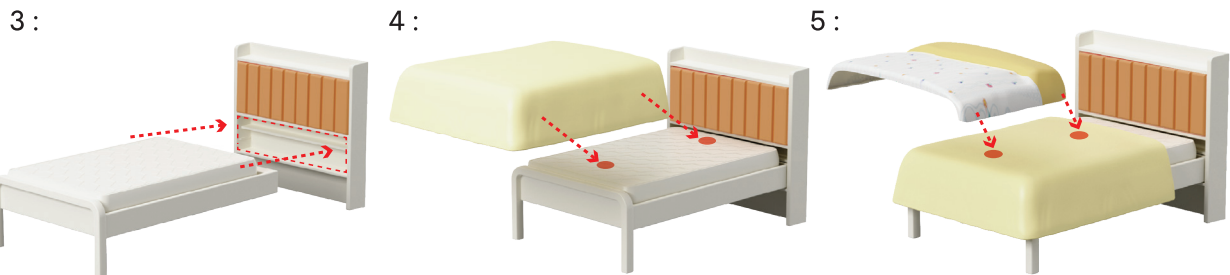
1:

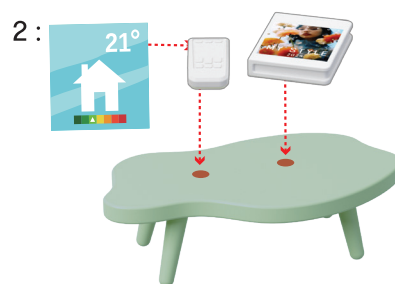
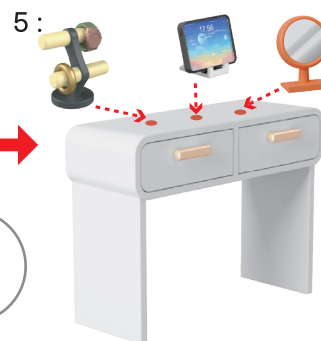
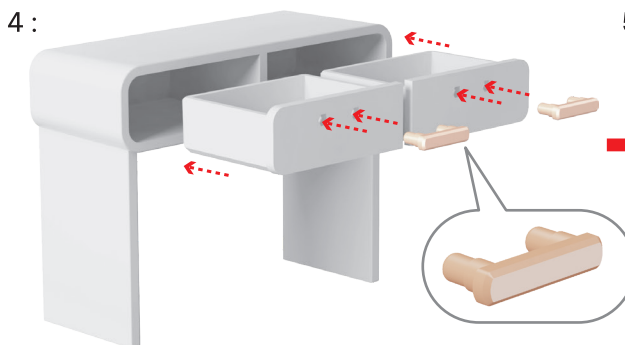
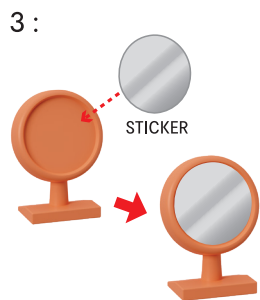
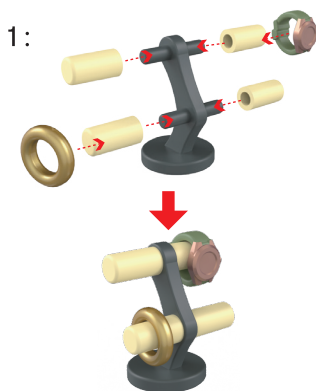


2:



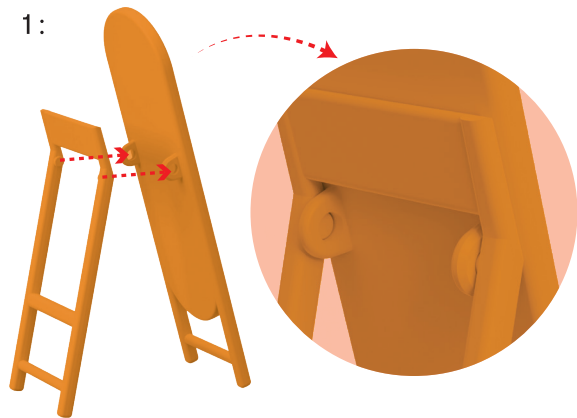
# ASSEMBLY INSTRUCTIONS



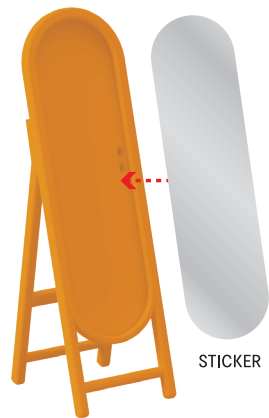




1:

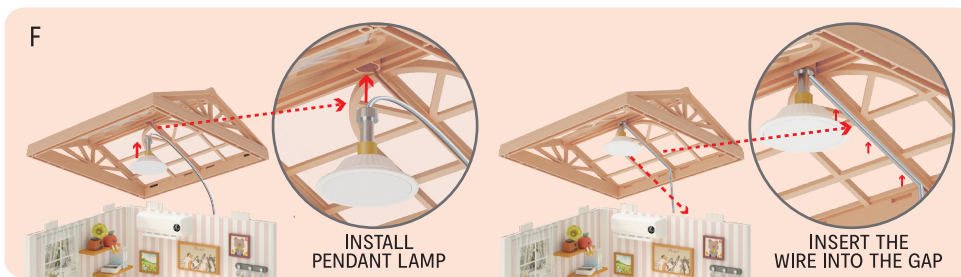
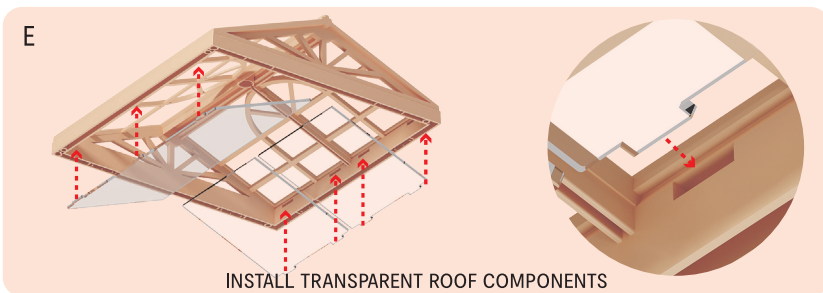
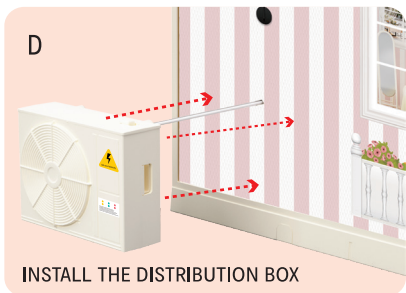
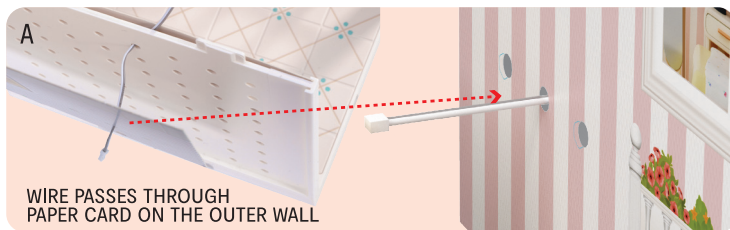


2:



STICKER





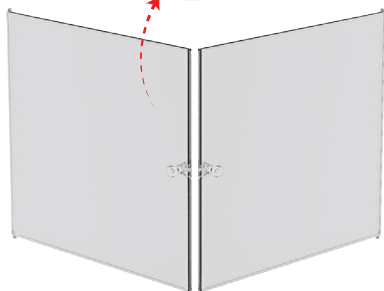
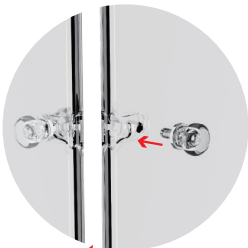


1:

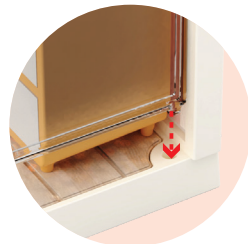


INSTALL THE DOOR HANDLE

2:

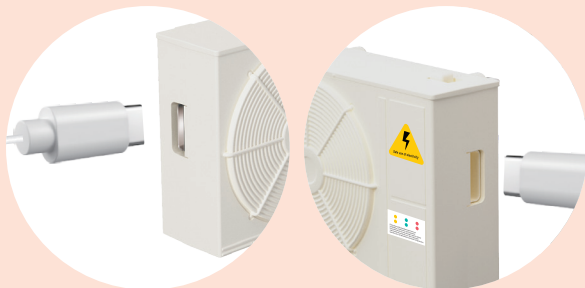


3:



## 01 DISTRIBUTION BOX ILLUSTRATION

### 1.CONNECT TO POWER SUPPLY



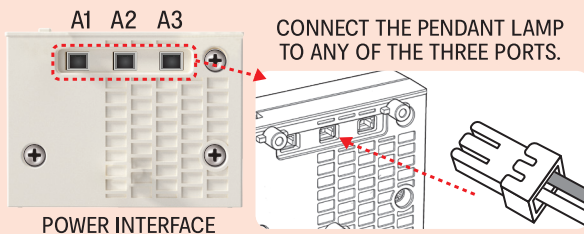
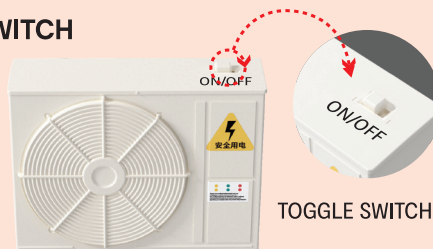
CHOOSE EITHER THE LEFT OR RIGHT INTERFACE, DO NOT CONNECT BOTH INTERFACES TO TRANSFORMER/POWER SUPPLY SIMULTANEOUSLY. FAILURE TO FOLLOW THESE INSTRUCTIONS MAY RESULT IN DAMAGE TO THE PRODUCT.



**!** Type-C INTERFACE

ATTENTION:INPUT POWER 5V  $\text{---}$  1A (MAX. 5W)

### 2.SWITCH



## 02 NOTE

### **!** WARNING:

- **WARNING:** THE PRODUCT SHOULD ONLY BE CONNECTED TO THE DISTRIBUTION BOX SUPPLIED BY THE MANUFACTURER.
- **WARNING:** TRANSFORMER/ POWER SUPPLY AND USB CABLE ARE NOT A TOY(TRANSFORMER/POWER SUPPLY NOT INCLUDED). TRANSFORMER/POWER SUPPLY, DISTRIBUTION BOX AND USB CABLE USED WITH THE ELECTRIC TOY SHALL BE REGULARLY EXAMINED FOR DAMAGE TO THE SUPPLY CORD, PLUG,ENCLOSURE OR OTHER PARTS,AND IN THE EVENT OF DAMAGE, IT SHALL NOT BE USED UNTIL THE DAMAGE HAS BEEN REPAIRED.
- THE PRODUCT LIABLE TO BE CLEANED WITH LIQUIDS ARE TO BE DISCONNECTED FROM THE POWER SUPPLIER BEFORE CLEANING. REMOVE THE DISTRIBUTION BOX AND USB CABLE BEFORE CLEANING.

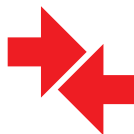
## EXPAND PLAY: LEFT AND RIGHT ASSEMBLY



1.REMOVE THE ACCESSORIES



2.INSTALL CONNECTION ACCESSORIES



3.CONNECT TOGETHER



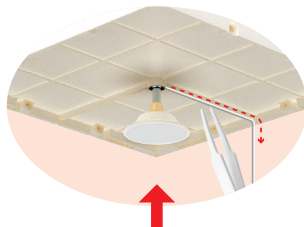
CONNECT ONE OF THE INTERFACES TO THE POWER SUPPLY(5V 1A), AND THEN CONNECT THE OTHER DISTRIBUTION BOXES IN SERIES.





REMOVE THE ROOF OF THE FIRST FLOOR

EXPAND PLAY:  
UP AND DOWN ASSEMBLY



INSTALL PENDANT LAMP TO CEILING AS SHOWN.



UP AND DOWN COMBINATION

CONNECT ONE OF THE INTERFACES TO THE POWER SUPPLY(5V 1A), AND THEN CONNECT THE OTHER DISTRIBUTION BOXES IN SERIES.






**WARNING:** ADULT SUPERVISION AND ASSISTANCE REQUIRED

**WARNING:** FOR SAFETY REASONS, REMOVE ALL TAGS, LABELS AND PLASTIC FASTENERS BEFORE GIVING THIS TOY TO YOUR CHILD.

**WARNING:**  
CHOKING HAZARD - SMALL PARTS.  
NOT FOR CHILDREN UNDER 3 YEARS.

CAUTION: TRANSFORMER/ POWER SUPPLY AND USB CABLE ARE NOT A TOY (TRANSFORMER/POWER SUPPLY NOT INCLUDED). TRANSFORMER/POWER SUPPLY AND USB CABLE USED WITH THE ELECTRIC TOY SHALL BE REGULARLY EXAMINED FOR DAMAGE TO THE SUPPLY CORD, PLUG, ENCLOSURE OR OTHER PARTS, AND IN THE EVENT OF DAMAGE, IT SHALL NOT BE USED UNTIL THE DAMAGE HAS BEEN REPAIRED.

**USB SPECIFICATION:**  
USB INPUT: 5V  1A (MAX. 5W)  
USB TYPE: TYPE-C



PRODUCT MAY VARY SLIGHTLY FROM IMAGE SHOWN. KEEP THE PACKAGING SINCE IT CONTAINS IMPORTANT INFORMATION. MISUSE OF TRANSFORMER OR POWER SUPPLY CAN CAUSE ELECTRICAL SHOCK. THE PRODUCT SHALL ONLY BE USED WITH A TRANSFORMER OR POWER SUPPLY FOR TOYS. THIS TOY IS ONLY TO BE CONNECTED TO EQUIPMENT BEARING EITHER OF THE FOLLOWING SYMBOLS.



or



**MADE IN CHINA**

**CUSTOMER SERVICE:**

**KMART AU:** 1800 124 125  
**KMART NZ:** 0800 945 995  
**TARGET AU:** 1300 753 567

**K: 43-691-951**