

106x150mm (折后尺寸)

11



After completing your artwork, allow 24 hours for it to dry completely. Then your artwork is ready to be displayed.

MADE IN CHINA

CUSTOMER SERVICE:  
KMART AU: 1800 124 125  
KMART NZ: 0800 945 995  
TARGET AU: 1300 753 567

KEYCODE  
K: 43-669-622 | T: 72-001-738

anko

## Texture Canvas Art Kit Instruction Manual

### Kit Includes

- › 1 x stretched canvas, size 30.4cm(H) x 23cm(W) x 1.5cm(D)
- › 14 x acrylic paints
- › 1 x modelling paste
- › 1 x paint palette
- › 2 x plastic knives
- › 2 x paint brushes
- › 1 x plastic scraper
- › 1 x instruction sheet



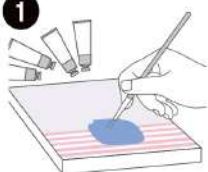
Guide Image

### Tips

- › Acrylic paints and modelling paste should be well mixed and blended.
- › The palette knife can be used in different ways for stroke effects: flat and firm for broad strokes or the tip for dabs and small strokes.
- › Do not handle completed artwork until completely dry.
- › The scraper can be used to make markings and patterns in the background.

### How To Make A Vase Of Flowers Texture Canvas

1



Paint the base with your chosen acrylic paint colours and allow to dry. Use the Guide Image for colour reference.

2



Mix modelling paste with your desired acrylic paint colour until blended. Add more paint to brighten colours, or more modelling paste to lighten colours.

3



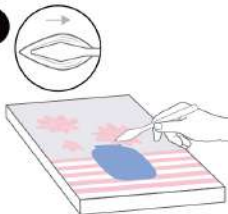
Take some of the modelling paste mixture onto a flat surface and mix thoroughly with the palette knife.

4



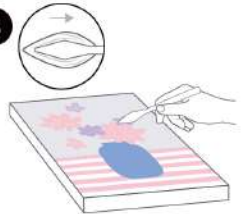
Use your palette knife to scrape the mixture into a neat pile, and then load a small amount to the back of the palette knife. The mixture is ready to be applied to the canvas.

5



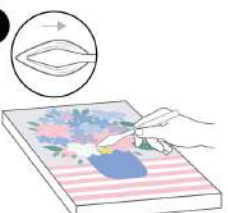
Gently press the mixture onto the canvas and slide the palette knife to create strokes in the shapes of pink petals.

6



Repeat steps 2-5 and gently press and slide to shape purple flowers.

7



Repeat steps 2-5 and gently press and slide to shape some blue, white, yellow flowers and green leaves.

8



Using the other palette knife, repeat steps 2-5, gently pressing and lifting to shape the centres of the flowers in different colours.

9



Use the paint brush to paint yellow stamens on the 2 pink flowers, 1 big blue flower and 1 white flower.

10



Using the paint brush, paint in the green stems.