

**anko**

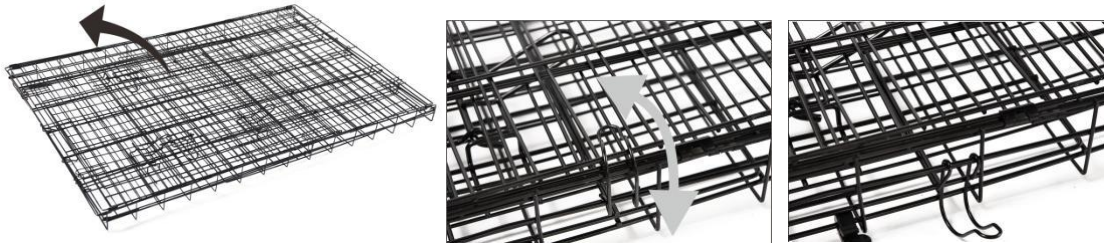
## Pet Crate X-Large White



## **Instructions**

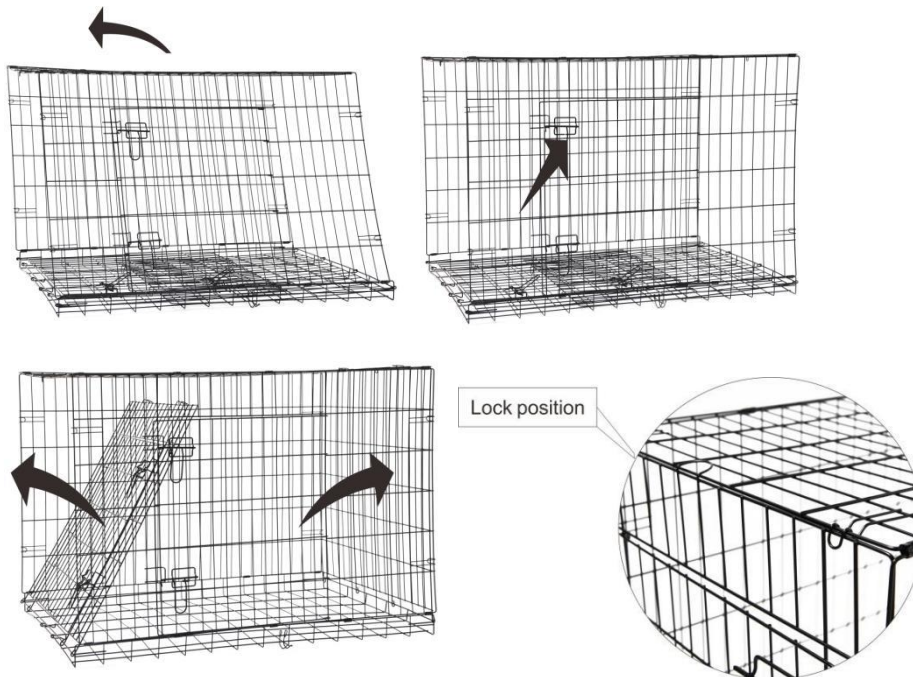
### **Step 1.**

Open the clasp lock of the pet crate.



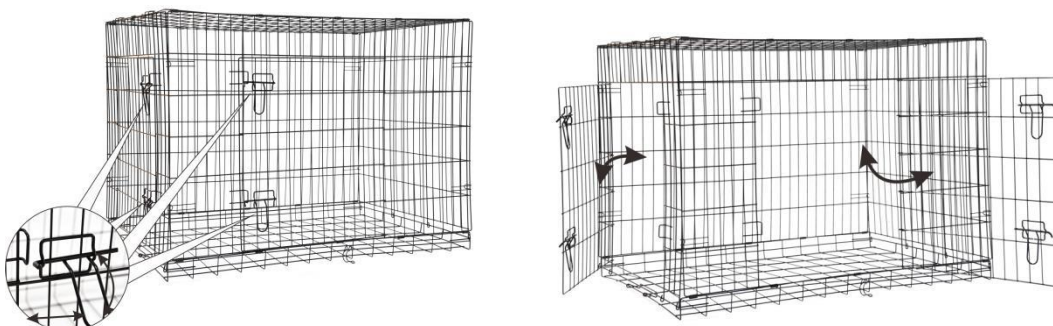
### **Step 2.**

Fold out the sides of the pet crate, lift the front part of the pet crate into an upright position and hold it there. Lift the right and left sides up of the pet crate until it locks into position. See image below.



### **Step 3.**

Slide open the left and front door lock to open the doors.



#### **Step 4.**

Open the clasp lock of the pet crate as below image.



#### **Note**

Read these instructions carefully and familiarise yourself with the procedure before assembling the unit.

Ensure you have enough space to lay out all the parts before assembly.

To avoid scratching it is recommended that you assemble the unit on a soft level surface.

#### **Guide to Crate Training your dog**

Crate training can have real benefits in providing a safe haven for your dog, it does take time and can require patience. Crates can be ideal for transport, for sleeping and even training for the stay at the Vets. Crate training is not right for all dogs and dogs should not be left alone for prolonged periods of time. Crate training should not be used for dogs who are claustrophobic, have anxiety or are anxious. Crates should not be used as a form of punishment. If your dog barks or whines while in the crate, don't shout or bang the crate, this may cause fear. The dog may want to toilet or just want to be let out. Not all dogs like to be in a crate.

Make sure that the crate size you select is the right size for your dog, it should be big enough for the dog to stand and turn around. Remember "bigger is not always better" since being too roomy, it isn't snug and may not feel safe. Look at the guide on the packaging to make sure.

The pet crate needs to be a place where your dog feels comfortable, where it can sleep and be secure. Make sure that the bedding is clean and comfortable, add favorite toys. Always use positive rewards, place treats within the crate.

Begin by feeding your dog in the crate and encouraging the dog to enter. Encourage your dog to spend longer in the crate, always stay close and supervise during this training phase. Once your dog has spent 30 minutes in the crate calmly, you can leave them for longer periods of time eg a couple

of hours. If your dog sleeps in the crate, it will let you know when it needs to toilet, take it out and reward the dog just before return to the crate.

It is not acceptable to leave dogs in crates for long periods of time eg while you are at work. Adult dogs should not be left for more than 3-4 hours in a crate, puppies not more than 1-2 hours. If you are going to leave the dog for extended periods of time, place the crate with the door open into an enclosed area such as a bathroom and remove any possible hazards. Always ensure that there is a clean supply of water.

If your dog shows any signs of distress such as biting the crate etc, let the dog out. If the dog continues to be distressed through training, the crate is not the right choice for your dog.