

anko

Kawaii Keychains Fillable Slime Set

3+
years



1 Open the plastic mould and add a portion of slime.



2 Put the kitty into the mould.



3 Add some beads.



4 Add some sprinkles.



5 Add another portion of slime on top.



6 Secure the mould lid.



7 Thread the beads onto the elastic string.



8 Tie a knot when the chain is finished.



9 Trim off the excess string ends (scissors not included).



10 Clip the finished chain into the keychain clip.



11 Attach the decorated slime container to the keychain clip.



COMPLETED

anko



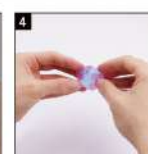
1 Open the plastic mould.



2 Place the sprinkles into one half of the mould.



3 Take a portion of the red and blue slime separately.



4 Mix the slime to achieve the desired colour.



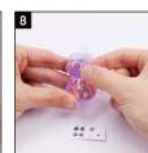
5 Place the mixed slime into one half of the mould.



6 Add the charm and repeat the steps to complete the other half.



7 Join the two completed halves of the mould together.



8 Apply the eye stickers in the appropriate positions.



9 Thread the beads and keychain clip onto the elastic string.



10 Tie a knot and trim off the excess string ends (scissors not included).



11 Attach the decorated slime container to the keychain clip.



12 Apply the stickers to the seam.



COMPLETED

WARNING:
LONG CORD AND SMALL PARTS: STRANGULATION AND CHOKING HAZARD. NOT FOR CHILDREN UNDER 3 YEARS.

WARNING: CHOKING HAZARD
SMALL BALL. NOT FOR CHILDREN UNDER 3 YEARS.

ATTENTION: TO KEEP SLIME WHITE, ALWAYS KEEP IN A TIGHTLY SEALED CONTAINER. ALWAYS PROTECT CLOTHES, CARPETS, WORK SURFACES, FURNITURE AND OTHER OBJECTS. ALWAYS USE A PROTECTIVE COAT OR SHIRT. AVOID INGESTION AND EYE CONTACT. WASH HANDS AFTER USE.

297x210mm (A4)