

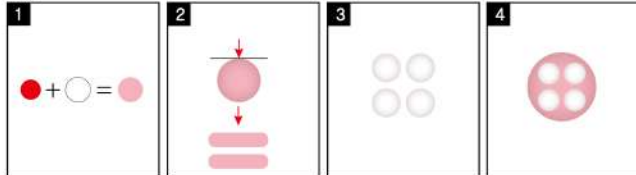
210 x 297 mm

anko

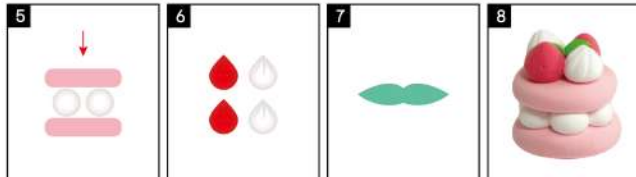
Ultimate Sweeties Whipped Cream Deco Kit

6+ years

Cake



1 You can mix new pink light clay as shown in the image. 2 Take the pink light clay, form it into two balls, and then flatten them into two pies. 3 Use the white light clay to make 4 smaller balls. 4 Place the 4 white balls on top of one of the pink pies.



5 Place the other pink pie on top of the white balls. 6 Use white and red light clay to make teardrop shapes, then poke small holes or add stripes on them. 7 Use green foam clay to create leaf-like pieces for decoration. 8 Place the finished teardrops and green decorations on the top. Finish your own cake.

Pink Dessert

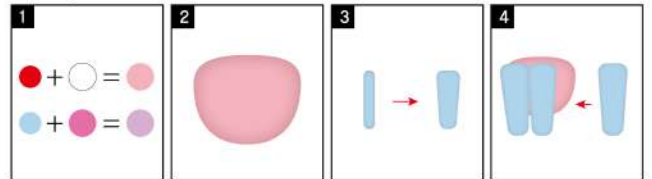


1 Open the cream glue and attach a nozzle. Pipe the cream clay into a cup. 2 Decorate the cream cup with sprinkles and resin accessories. 3 Finished!

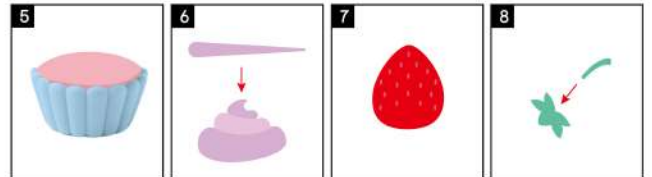
210 x 297 mm

anko

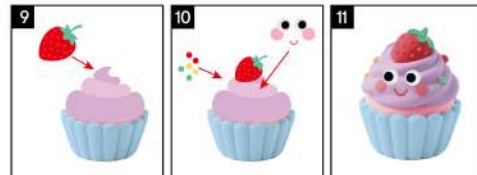
Strawberry Dessert



1 You can mix new colours of light clay as shown in the picture. 2 Roll the pink light clay into a ball. 3 Roll the blue light clay into a cylinder shape and then flatten it. 4 Attach the flattened blue cylinders onto the pink ball, one by one.



5 Use several flattened blue cylinders to surround the pink ball completely, forming a cream cup base. 6 Roll the purple light clay into a cone shape and coil it around to create the shape of whipped cream. 7 Use red light clay to form the body of a strawberry, then poke small dents on its surface. 8 Use green foam clay to create the leaves and stems of the strawberries.



9 Place the finished purple cream on top of the cream cup, and then add the strawberry on top. 10 Add blushing cheeks, a mouth, and googly eyes. Then, roll small balls from foam clay and light clay to decorate around the base. 11 Finished!

WARNING: CHOKING HAZARD - SMALL PARTS. NOT FOR CHILDREN UNDER 3 YEARS.
WARNING: IMITATION FOOD. NOT FOR HUMAN CONSUMPTION.
ATTENTION: ALL ART MATERIALS ARE NOTED TO BE USED IN A SAFE MANNER. PLEASE READ THE INSTRUCTIONS CAREFULLY. ALWAYS USE A PALETTE KNIFE TO PREVENT SKIN AND CLOTHING FROM BEING STAINED.
CAUTION: THIS PRODUCT IS NOT TO BE USED FOR COOKING OR CONTACT WITH FOOD. IT IS NOT A TOY. IT IS A CRAFT KIT.
PRODUCT MAY VARY FROM IMAGE SHOWN. PLEASE KEEP THE PACKAGING FOR FUTURE REFERENCE. ADULT SUPERVISION IS RECOMMENDED.