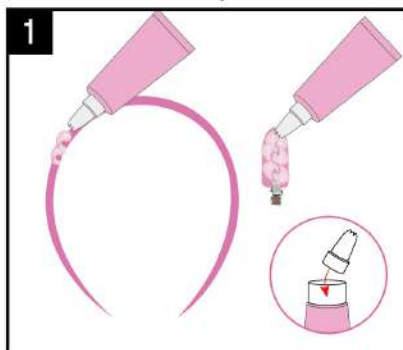


**anko**

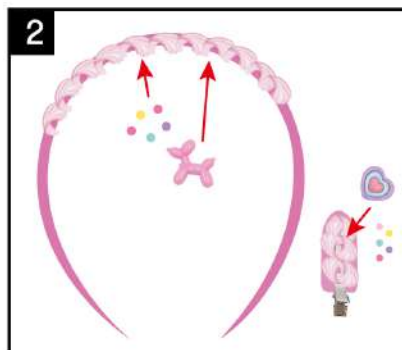
# Ultimate Fashion Accessory Design Kit

**6+**  
years

## Headband / Hair Clip



Open the cream glue tube and attach the nozzle. Squeeze the cream glue along the outer edge of the headband or the hair clip.

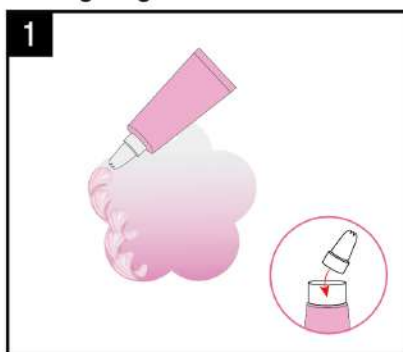


After you've put the cream where you want it, decorate it by pressing resins and beads on top.



Wait 24 hours for the cream glue to dry completely. By following these steps, you can create your own headband and hair clip.

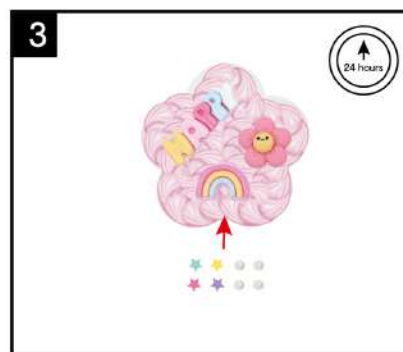
## Creamy Acrylic Necklace



Open the cream glue tube and attach the nozzle. Squeeze the cream glue along the edge of the flower-shaped acrylic piece.



Continue squeezing to fill the entire flower shape (be careful not to cover the hole at the top). Then, place your favorite resins on top.



Decorate the rest of the space with stars and pearl beads. Wait 24 hours for the cream glue to dry completely.



4. Pick a rainbow cord in the length you like for a necklace or bracelet. Thread the cord through the hole in the acrylic piece, then add the barrel beads.



After threading all the beads, tie a knot at each end of the cord.



Your necklace or bracelet is now finished!

**WARNING:**  
LONG CORD AND SMALL PARTS. STRANGULATION AND CHOKING HAZARD. NOT FOR CHILDREN UNDER 3 YEARS

**ATTENTION:** ALL ART MATERIALS LIKE WHIPPED CREAM GLUE, MAY CAUSE STAINS. ALWAYS PROTECT CLOTHES, CARPETS, WORK SURFACES, FURNITURE AND OTHER OBJECTS. ALWAYS USE A PROTECTIVE COVER TO PREVENT STAINS. AVOID INGESTION AND EYE CONTACT. WASH HANDS AFTER USE.

**CAUTION:** RINSE EYES IMMEDIATELY IF THE WHIPPED CREAM GLUE COMES INTO CONTACT WITH THEM. IF IRRITATION PERSISTS, SEEK MEDICAL ATTENTION.

**WARNING:** THE PRODUCT CONTAINS FUNCTIONAL SHARP POINT(S)/SHARP EDGE(S). PLEASE USE AS INTENDED.

PRODUCT MAY VARY FROM IMAGE SHOWN. PLEASE KEEP THE PACKAGING FOR FUTURE REFERENCE. ADULT SUPERVISION IS RECOMMENDED.