

8+
YEARS

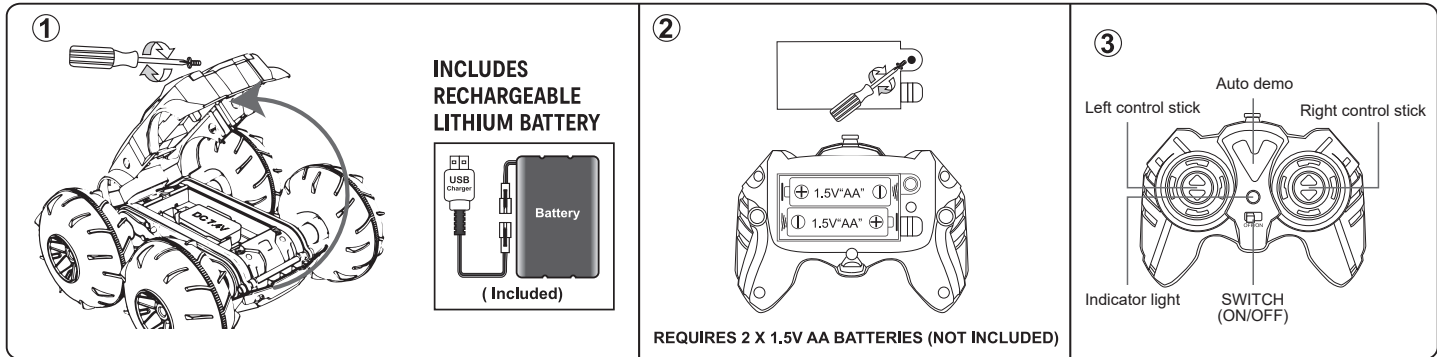
HYPER BOUNCE



Air pump included

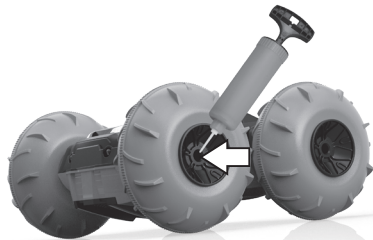
Battery installation:

- 1 - Unscrew to open the battery compartment.
- 2 - Insert batteries into the correct + and - polarities.
- 3 - Close the cover.



How to Inflate the Tyres:

Attach the manual air pump to the tyre valve, inflate until firm but slightly bouncy.
Lower pressure for sand, higher for pavement.

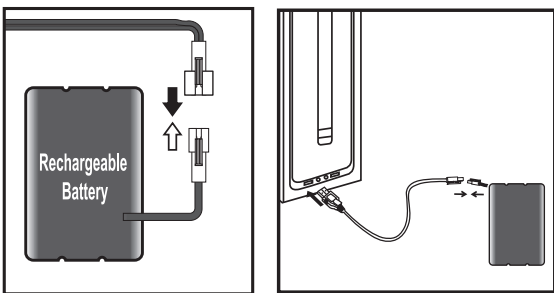


Air pump included

HOW TO CHARGE:



- A. Loosen the screw to open battery cover.
B. Separate the rechargeable battery pack from connector.
C. Connect the USB charging cable with rechargeable battery first. (The battery connector will only fit in one way, do not force the connectors together), then plug the large end of USB cable into a 5Vd.c. 2A charger (not supplied) or USB port only. The LED light on the USB charging cable will light up when charging.
D. The LED light extinguishes after it has finished charging.. Disconnect the USB charging cable from the USB port and then disconnect the rechargeable battery with USB charging cable.
Attention: Do not charge battery immediately after each play. Let the battery cool down for a while.

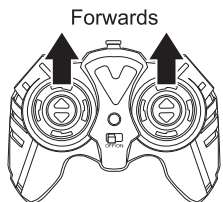


How to use simultaneously:

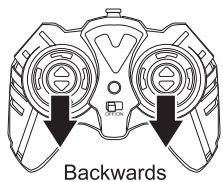
1. Turn on the vehicle, then turn on the transmitter.
2. When the vehicle is functioning, this means they have matched.
3. If you have more than two vehicles, please match one by one. When the second vehicle is matching, please always keep the first vehicle and transmitter on.
4. Please turn off both the vehicle and transmitter and re-start all matching processes if you are changing to play with another 2.4GHz transmitter.

Start:

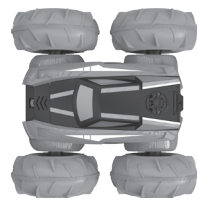
1. How to move forwards or backwards:
Push both control sticks up at the same time, the car will move forwards.
Pull both control sticks down at the same time, the car will move backwards.



Forwards



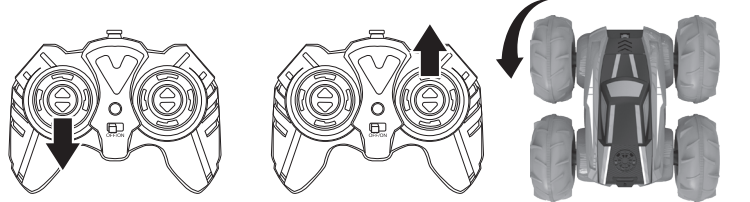
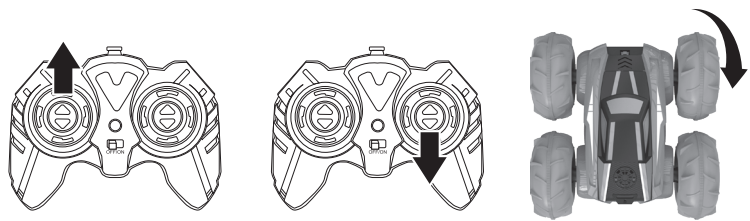
Backwards



Backwards

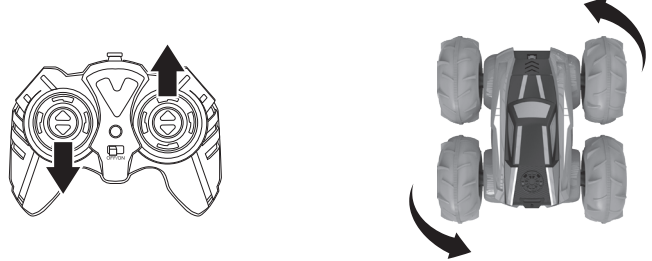
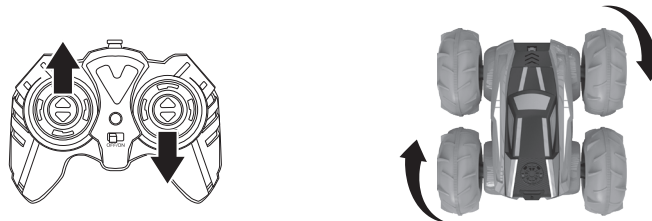
2. How to turn left / right:

Push the left control stick all the way up or pull the right control stick all the way down, the car will turn right.
Pull the left control stick all the way down or push the right control stick all the way up, the car will turn left.



3. How to spin rapidly:

Push the left control stick all the way up and pull the right control stick all the way down at the same time, the car will spin clockwise rapidly.
Pull the left control stick all the way down and push the right control stick all the way up at the same time, the car will spin anticlockwise rapidly.



4. How to flip over:

Push both control sticks up or pull both control stick down, when the car hits an obstacle at high speed, the car will flip over.
Push both control sticks up, when the car runs in high speed, then quickly pull both control sticks down for the car to flip over.

Note: It is not recommended to drive the car on carpet when you perform the flip function or spin function.

WARNING: BATTERIES ARE TO BE INSERTED WITH THE CORRECT POLARITY (+ AND -). DO NOT MIX DIFFERENT TYPES OF BATTERIES OR NEW AND USED BATTERIES. NON-RECHARGEABLE BATTERIES ARE NOT TO BE RECHARGED. RECHARGEABLE BATTERIES ARE ONLY TO BE CHARGED UNDER ADULT SUPERVISION. THE SUPPLY TERMINALS ARE NOT TO BE SHORT-CIRCUITED. REMOVE BATTERIES FROM THE TOY WHEN NOT IN USE FOR AN EXTENDED TIME OR WHEN BATTERIES BECOME EXHAUSTED. BATTERY INSTALLATION BY AN ADULT IS REQUIRED. DISPOSE OF BATTERIES RESPONSIBLY. DO NOT DISPOSE OF IN FIRE.

WARNING: THE BATTERY CHARGER USED WITH THE ELECTRIC TOY SHALL BE REGULARLY EXAMINED FOR DAMAGE TO THE SUPPLY CORD, PLUG, ENCLOSURE OR OTHER PARTS, AND IN THE EVENT OF DAMAGE, IT SHALL NOT BE USED UNTIL THE DAMAGE HAS BEEN REPAIRED.

WARNING: FOR SAFETY REASONS, REMOVE ALL TAGS, LABELS, AND PLASTIC FASTENERS BEFORE GIVING THIS TOY TO YOUR CHILD.

WARNING: THIS TOY PRODUCES FLASHES THAT MAY TRIGGER EPILEPSY IN SENSITISED INDIVIDUALS.

CAUTION: THE PRODUCT HAS A RECHARGEABLE LITHIUM-ION BATTERY. ONLY CHARGE THE PRODUCT BY PLUGGING THE USB CHARGER INTO A 5VD.C. 2A CHARGER (NOT SUPPLIED) OR USB PORT ONLY. ONLY CHARGE THE PRODUCT USING SUPPLIED CHARGING CABLE.

WARNING: CHOKING HAZARD
SMALL PARTS. NOT SUITABLE FOR CHILDREN UNDER 3 YEARS.

WARNING: THE TOY IS ONLY TO BE CONNECTED TO CLASS II EQUIPMENT BEARING THE SYMBOL.

PRODUCT MAY VARY SLIGHTLY FROM THE IMAGE SHOWN.
PLEASE KEEP PACKAGING FOR FUTURE REFERENCE. READ THE INSTRUCTIONS BEFORE OPERATING THE PRODUCT.
PERFORMANCE TIPS: DO NOT DRIVE THE VEHICLE THROUGH WATER.
DO NOT DRIVE THE VEHICLE INTO ANY HARD OBJECT.



K: 43-643-783
T: 71-877-884