

Assembly Instructions










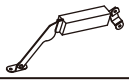
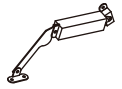
43637713 WAVE STORAGE BOX

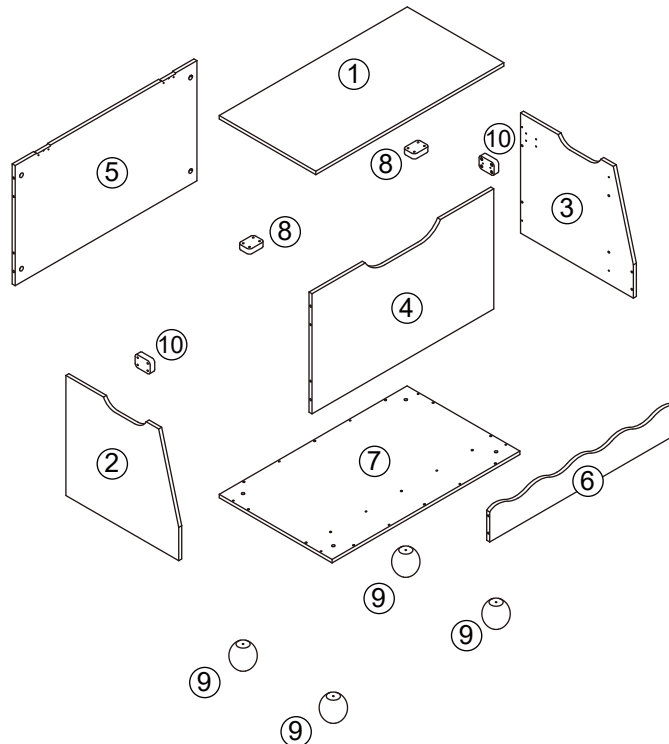
CARE INSTRUCTION: Wipe clean with a soft dry or damp cloth. Keep away from water and direct sunlight. For indoor and domestic use. Check and tighten all parts regularly.

WARNINGS: Do not stand or sit on the unit. Do not lean on the product. Do not drag the product. Use only on a flat surface. Do not use until all screws, bolts and knobs are firmly secured. This product contains small parts and sharp points, keep away from children and babies. Adult assembly required. Failure to follow these warnings could result in serious injury.

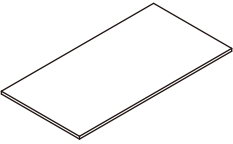
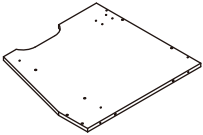
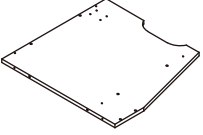
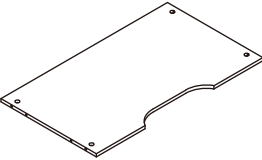
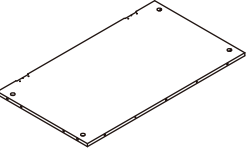
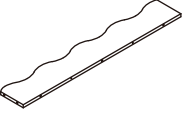
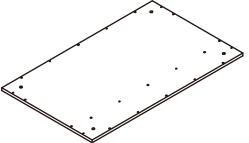
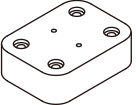
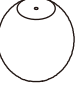
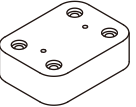
MAXIMUM TOTAL LOADING WEIGHT: 10KGS FOR TOP PANEL, 15KGS FOR STORAGE, 3KGS FOR BOTTOM BOOK SHELF, 28KGS IN TOTAL.

Hardware list

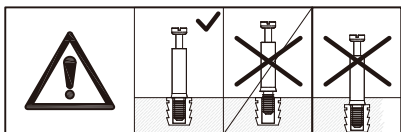
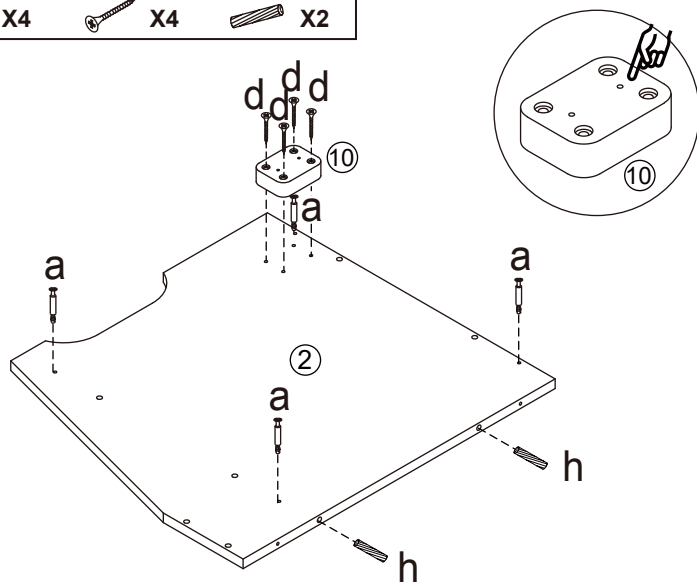
	a		8PCS
	b		8PCS
	c	4X35mm	10PCS
	d	4X25mm	16PCS
	e	5X45mm	4PCS
	f		1PC
	g	3X12mm	24PCS
	h	6X30mm	25PCS
	i		2PCS
	j		1PC
	k		1PC



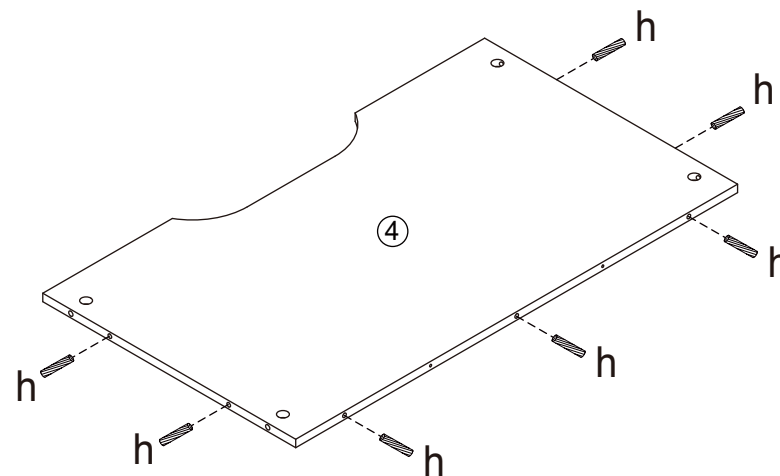
DO NOT TIGHTEN THE SCREWS UNTIL THE PRODUCT IS FULLY ASSEMBLED.

		
① 1 PC	② 1 PC	③ 1 PC
		
④ 1 PC	⑤ 1 PC	⑥ 1 PC
		
⑦ 1 PC	⑧ 2 PCS	⑨ 4 PCS
		
⑩ 2 PCS		

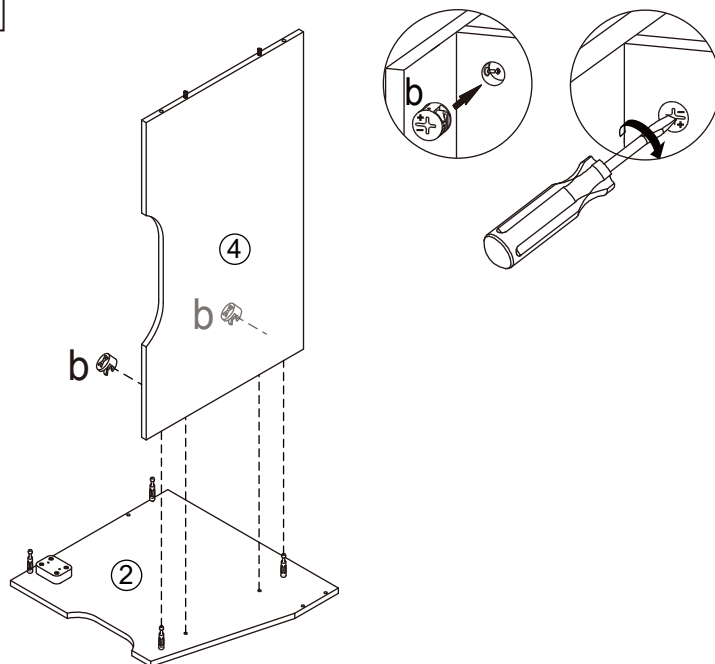
STEP 1



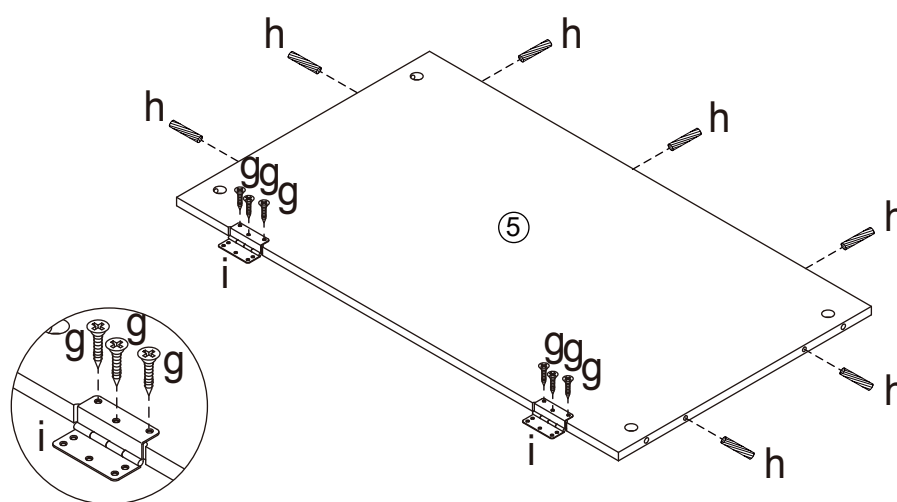
STEP 2



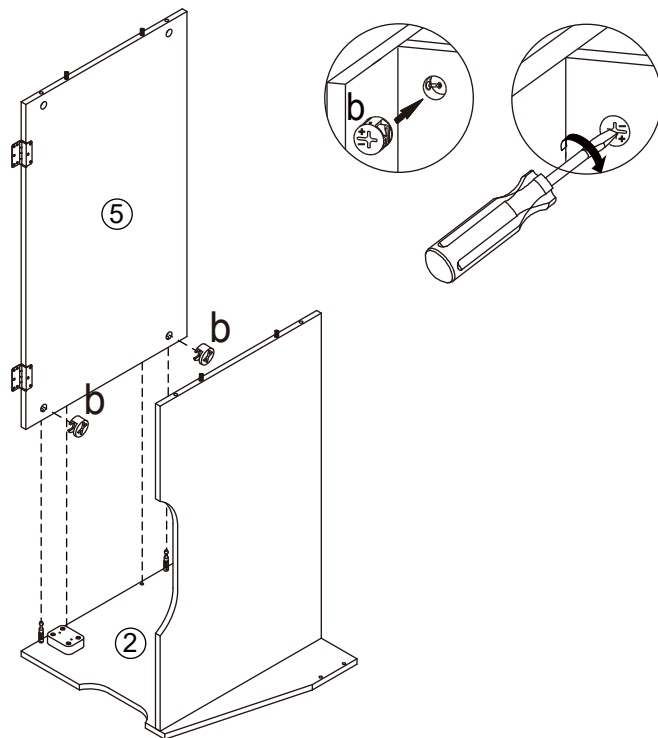
STEP 3



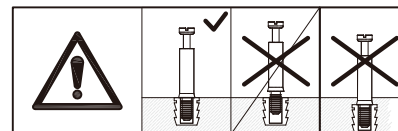
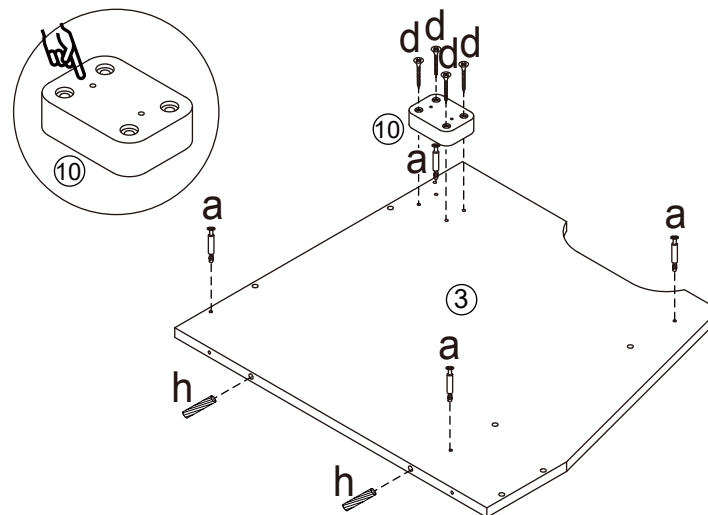
STEP 4



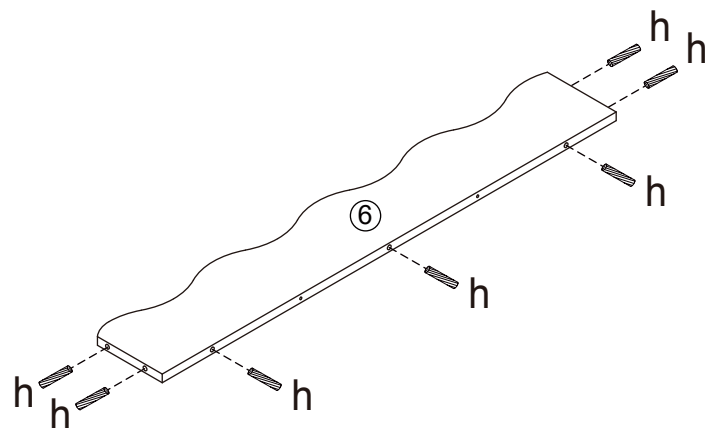
STEP 5



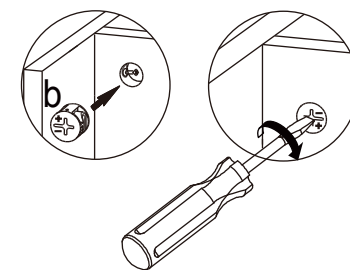
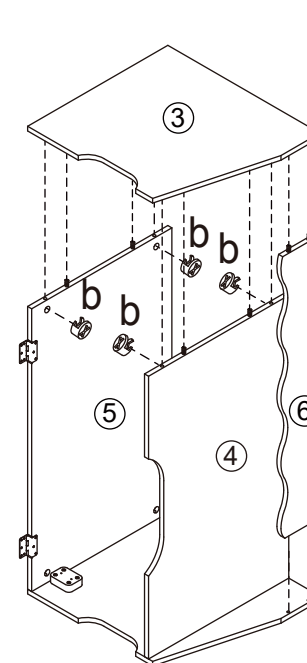
STEP 6



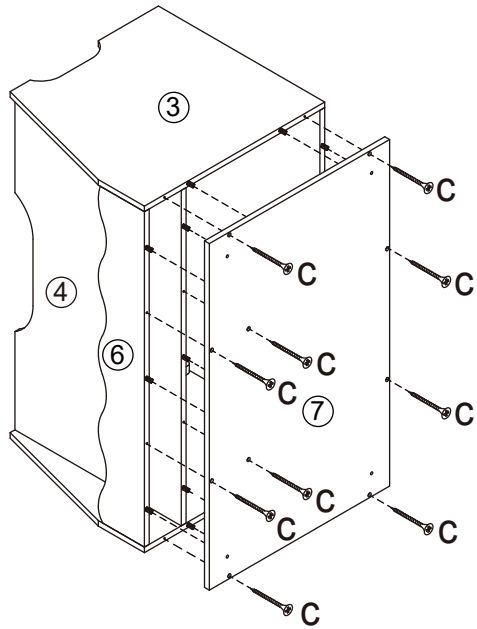
STEP 7



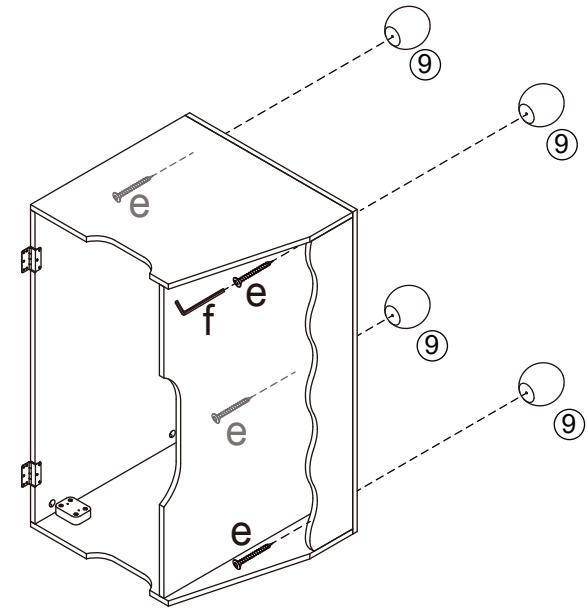
STEP 8



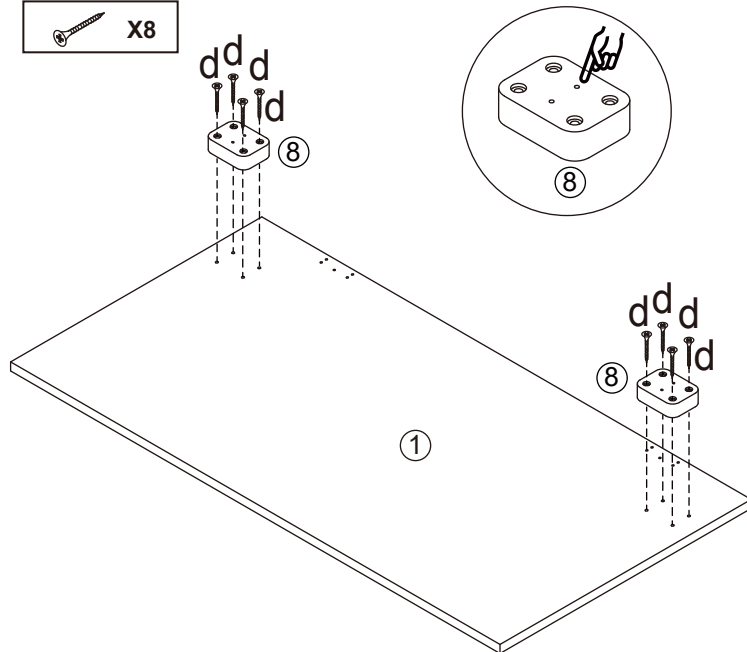
STEP 9



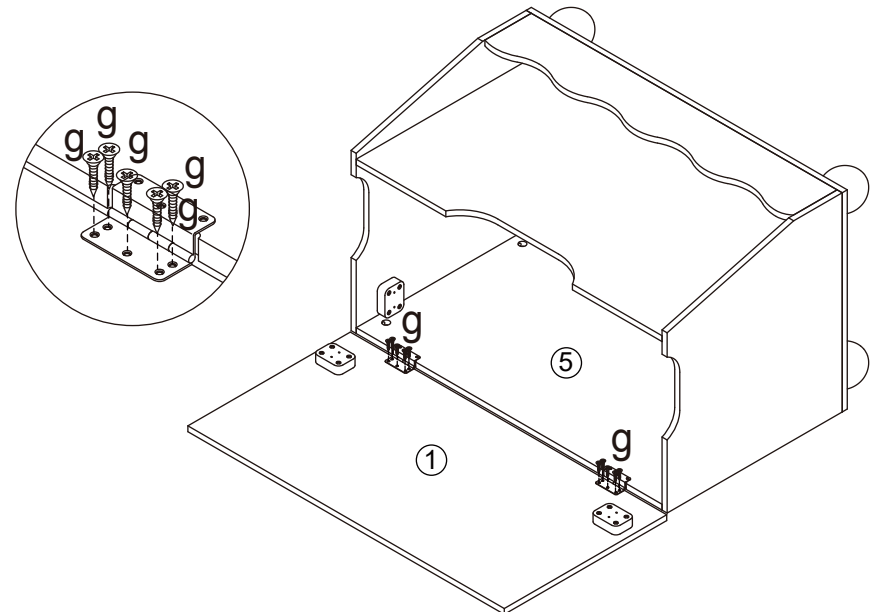
STEP 10



STEP 11

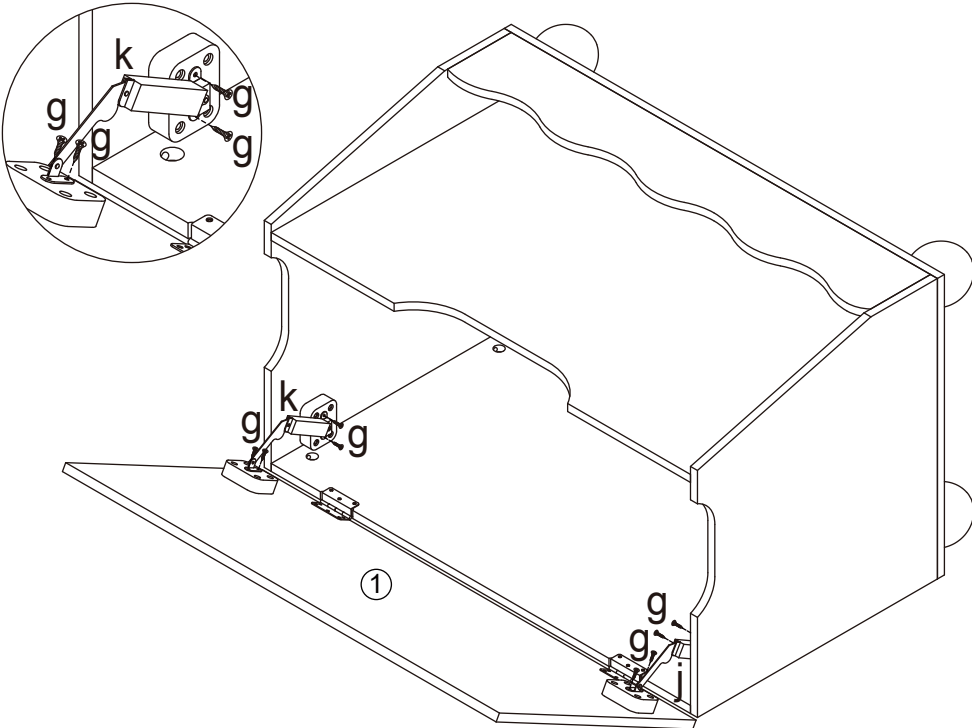


STEP 12



STEP 13

-  X8
-  X1
-  X1



STEP 14

